

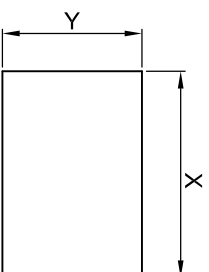
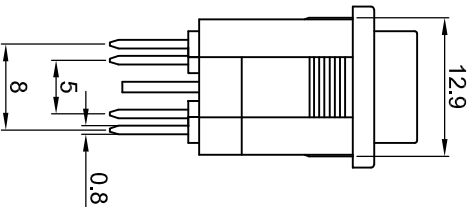
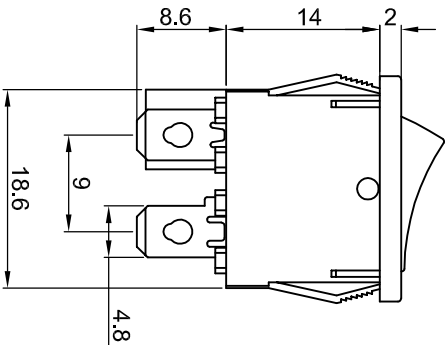
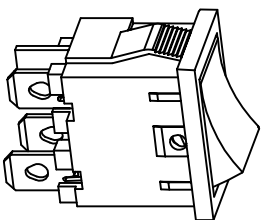
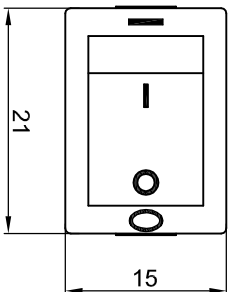


宏聚电子五金制品有限公司





HONGJU ELECTRONIC & METAL PRODUCTS CO.,LTD

MR-6

受控文件



CUT-OUT

Rating: 10A 125V AC (UL CUL)  
 6A 250V AC (VDE CQC CB)  
 Contact Resistance: 50mΩ Max
 Insulation Resistance: DC 500V 100MΩ Min
 Dielectric Strength: AC1500V 1 minute
 Operating Temperature: 0°C~85°C



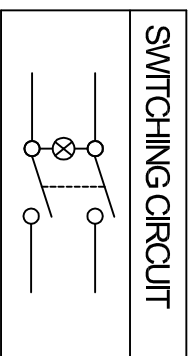
尺寸	X	Y
0.75~1.25	19.2±0.1	13.0±0.1
1.25~2.00	19.4±0.1	13.0±0.1
2.00~3.00	19.8±0.1	13.0±0.1

MATERIAL:

Body: Nylon66, UL rated: 94V-2 min

Actuator: PC

Terminal: Brass, silver or tin plated



Marking	X	0	1	2	4	5	6	7
		None						

公差 TOLERANCES .X± 0.3 .XX± 0.15

角度 ANGLE ± 1°

单位 DIMENSION UNIT mm.

版本 VER.	变更说明 CHANGE DESCRIPTION	日期 DATE	ECN NO.	批准 APPROVED BY	核对 CHECKED BY	绘图 DATE	品名 TITLE	图号 DRAWING NO
A1	重新整理发行	2009.09.21	N/A	李新超	李伟奇	2008.04.16	MR-6-210-CXL-BR-220	MR-6-210-CXL-BR-220_A1
A0	新发行	2008.04.16	N/A	李新超	李伟奇	2008.04.16	MR-6-210-CXL-BR-220	MR-6-210-CXL-BR-220_A1