



# 产品特性

## Product Characteristics

1: CW4L2-20A-S 的特點 Features of CW4L2-20A-S:

1.1 设计同时抑制共模和差模排放 Designde to suppress both Common and Differential mode emissions.

1.2 滤波器组件上封装在电镀金属外壳 Filter components are on capsulated in a plated metal enclosure.

1.3 此滤波器有绝缘 M4螺钉用于输入和输出端子 The Filter is provided with insulated M4 Screw for input and output terminations

1.4 滤波器是 UL, CUL。并通过 CE, RoHS 认可和 CQC 安全和施工要求 The filter is UL,CUL. and CE,RoHS recognized and complies with CQC safety and construction requirements.

### 1：技術條件 Ratings and Values

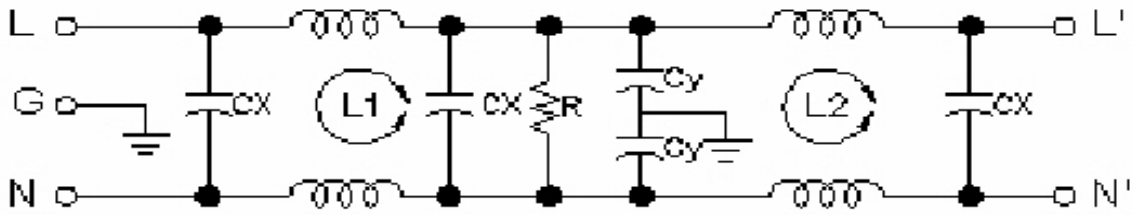
額定電壓：Rated Voltage:	250VAC
工作頻率：Operating Frequency:	50/60Hz
額定電流：Rated Current:	20A
工作溫度：Operating Temp:	-25 to+85°C
洩漏電流：Leakage Current:	0.45mAmax@220VAC/50Hz
氣候類別：Climatic Category:	25/85/21 (-25°C to+85°C)
保存溫度：Storage Temperature:	-25to 100°C
相關設計標準： Relevant Design Standards:	UL, E201603、CE、ROHS、CQC、ISO9001、CUL

### 2.技術參數 Technical Parameters:

電感：Inductance: (20A)	L1:2x0.5mH+25%@1khz,1v min
参数（一）電容：Capacitance-	CX: 3*0.1uF      CY:2*2200pF
参数（二）電容：Capacitance-	CX: 3*0.1uF      CY:2*3300pF
電阻：Resistance:	1.0MΩ
高壓 Hi-pot Voltage	L-L/N-N    1450VDC,L/N-G-G:2250VDC
絕緣 IR	L/N-G:100VDC 300MΩ Min
直流電阻：DCR	L-L,:0.5Ω Max

Fig 1

電路原理圖 Annex 1-Electrical Schematic



產品外形尺寸圖

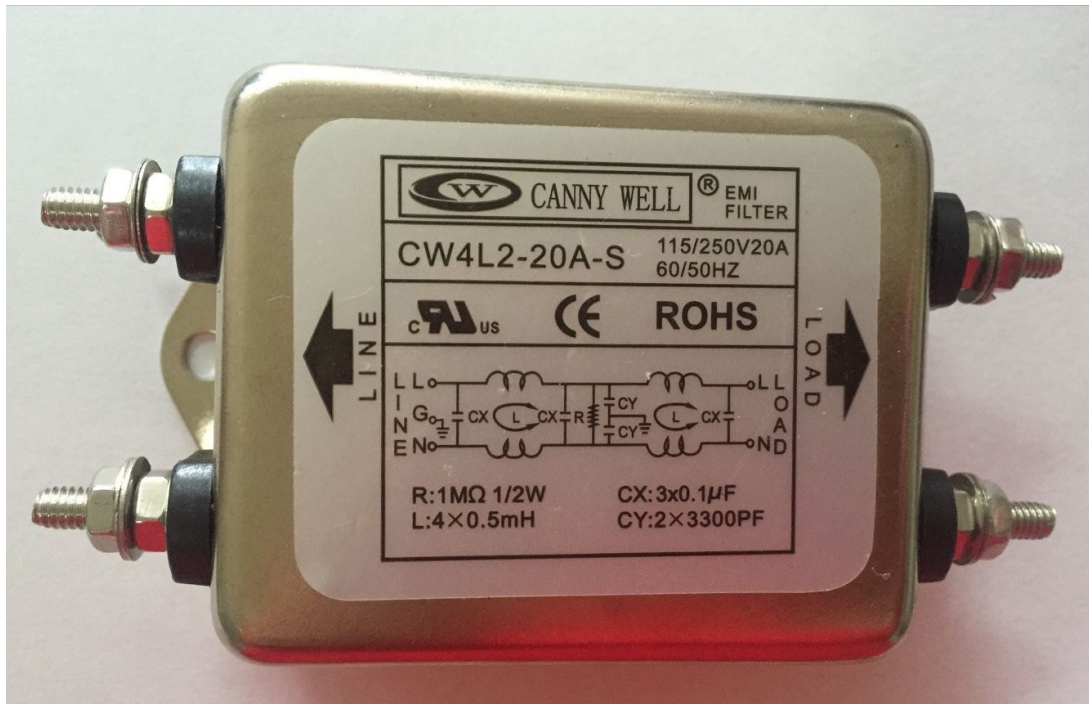
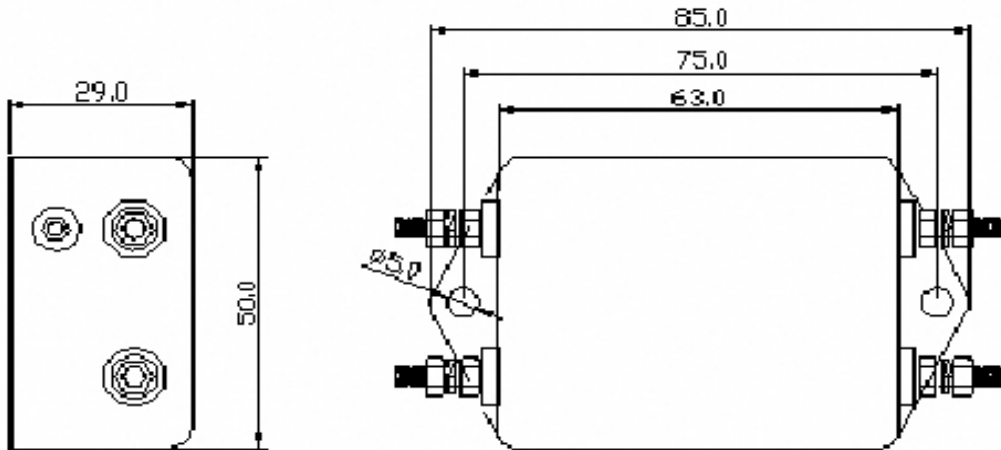


Fig 2

CANNYWELL -Suzhou ZhiLe Electronical Factory