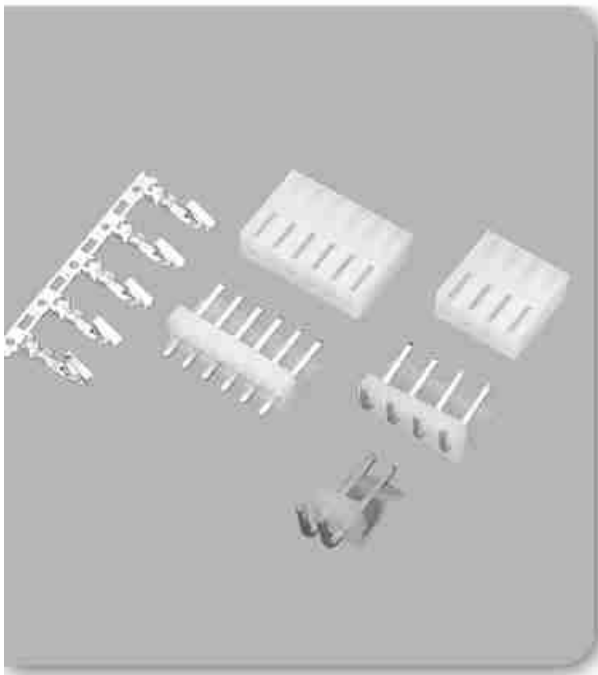


产品详细信息

introduce .....

线对板连接器 >> CH3.96

产品订购



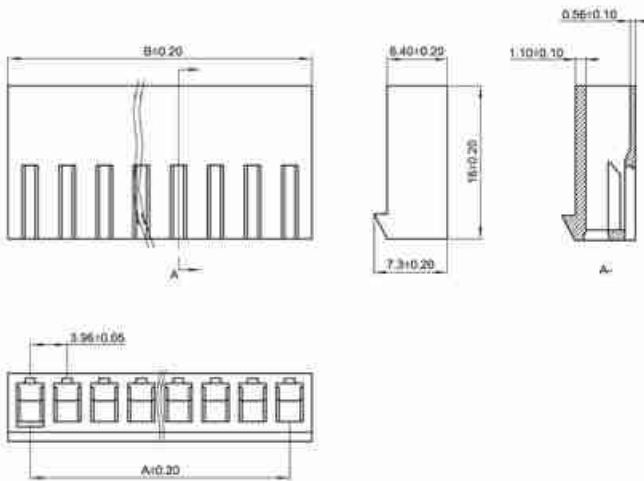
◆ SPECIFICATIONS

Unit:mm

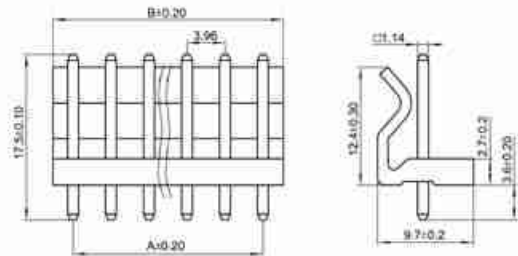
- ◇ Poles: 2~12
- ◇ Applicable wire: AWG#22-#30
- ◇ Voltage rating: 250V DC/AC
- ◇ Current rating: 6A
- ◇ Withstand voltage: 1500V AC
- ◇ Working Temperature: -25°C ~ +85°C
- ◇ Insulation resistance: ≥ 1000MΩ
- ◇ Contact resistance: ≤ 0.01Ω
- ◇ Applicable PC board thickness: 1.6mm

UL:Recognized No.E309635  
RoHS-specification and Halogen-free products

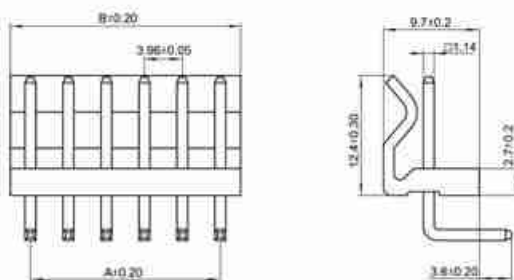
CH3.96-nY



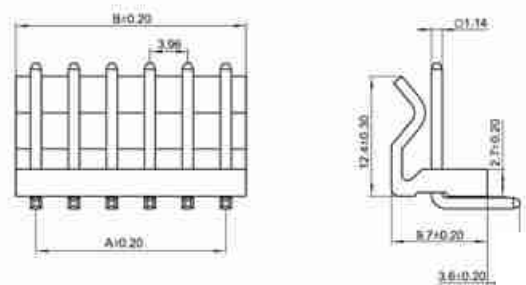
CH3.96-nA



CH3.96-nAGW



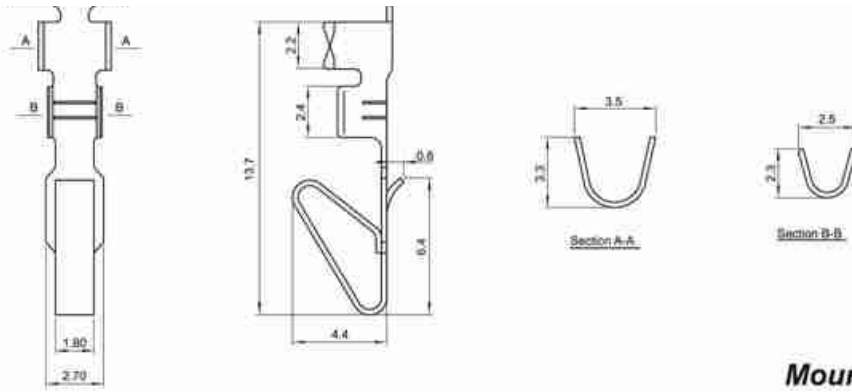
CH3.96-nAW



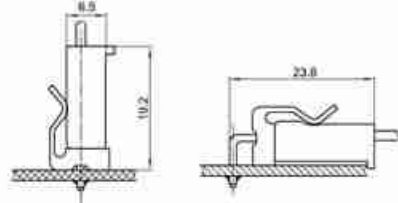
Unit:mm

CH3.96-PT





**Mounting Measurement**

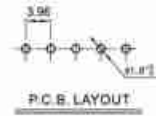


**Terminal(CH3.96)**

| Type      | Applicable wires |       | O.D of wire ins<br>mm | Material    | Finish     |
|-----------|------------------|-------|-----------------------|-------------|------------|
|           | mm <sup>2</sup>  | AWG#  |                       |             |            |
| BM-CH3.96 | 0.08-0.3         | 22-32 | 1.2-1.9               | Phos.bronze | Tin-plated |

| Poles | Type       | Size(mm) |       |
|-------|------------|----------|-------|
|       |            | A        | B     |
| 2     | CH3.96-2Y  | 3.96     | 8.65  |
| 3     | CH3.96-3Y  | 7.92     | 12.61 |
| 4     | CH3.96-4Y  | 11.88    | 16.57 |
| 5     | CH3.96-5Y  | 15.84    | 20.53 |
| 6     | CH3.96-6Y  | 19.80    | 24.49 |
| 7     | CH3.96-7Y  | 23.76    | 28.45 |
| 8     | CH3.96-8Y  | 27.72    | 32.41 |
| 9     | CH3.96-9Y  | 31.68    | 36.37 |
| 10    | CH3.96-10Y | 35.64    | 40.33 |
| 11    | CH3.96-11Y | 39.60    | 44.29 |
| 12    | CH3.96-12Y | 43.56    | 48.25 |
| 13    | CH3.96-13Y | 47.52    | 52.21 |
| 14    | CH3.96-14Y | 51.48    | 56.17 |
| 15    | CH3.96-15Y | 55.44    | 60.13 |

| Poles | Type       | Size(mm) |       |
|-------|------------|----------|-------|
|       |            | A        | B     |
| 2     | CH3.96-2A  | 3.96     | 3.96  |
| 3     | CH3.96-3A  | 7.92     | 11.90 |
| 4     | CH3.96-4A  | 11.88    | 16.00 |
| 5     | CH3.96-5A  | 15.84    | 20.00 |
| 6     | CH3.96-6A  | 19.80    | 24.00 |
| 7     | CH3.96-7A  | 23.76    | 27.85 |
| 8     | CH3.96-8A  | 27.72    | 31.80 |
| 9     | CH3.96-9A  | 31.68    | 35.70 |
| 10    | CH3.96-10A | 35.64    | 39.40 |
| 11    | CH3.96-11A | 39.60    | 43.40 |
| 12    | CH3.96-12A | 43.56    | 47.40 |
| 13    | CH3.96-13A | 47.52    | 51.40 |
| 14    | CH3.96-14A | 51.48    | 55.40 |
| 15    | CH3.96-15A | 55.44    | 59.40 |



点击次数: 1322 发布时间: 2010-6-14 【打印】 【返回】

