

SPECIFICATIONS

Customer : _____

Customer P/N: MSRH Series

Drawing No : _____

Quantity : 0 Pcs. Date : 2017/09/06

Chilisin P/N : MSRH Series/参照

SPECIFICATION ACCEPTED BY:	
COMPONENT ENGINEER	
ELECTRICAL ENGINEER	
MECHANICAL ENGINEER	
APPROVED	
REJECTED	

For Customer approval Only

Qualification Status: Full Restricted Rejected

Approved By	Verified By	Re-checked By	Checked By

Comments:

Meled Electronics Co., Ltd.

www.meledinc.com

Version change history

Rev.	Effective Date	Changed Contents	Change Reasons	Approved By
01	/	New release	/	/

1. Features

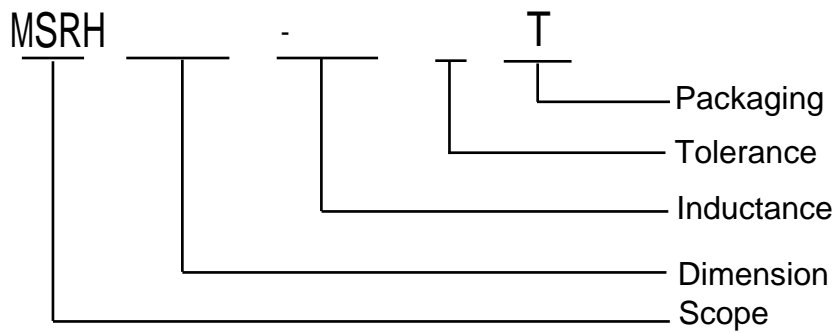
- High saturation current
- Magnetic shielded
- SMT type, suitable for reflow soldering.



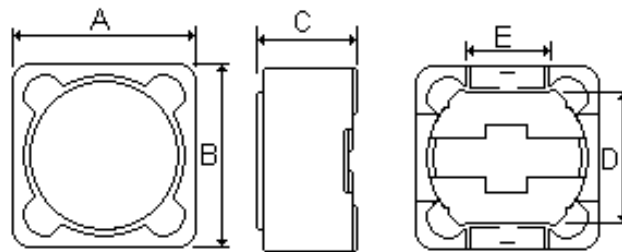
2. APPLICATIONS

- OA equipment, Notebook Computer
- LCD televisions
- DC/DC converters etc.

3. PRODUCT IDENTIFICATION



4. Shape and Dimensions



Unit: mm

Part	A	B	C	D	E
MSRH73	7.3±0.3	7.3±0.3	3.4±0.3	5.0	2.0
MSRH74	7.3±0.3	7.3±0.3	4.2±0.3	5.0	2.0
MSRH124	12.2±0.4	12.2±0.4	4.5±0.3	7.6	5.0
MSRH125	12.2±0.4	12.2±0.4	5.7±0.3	7.6	5.0
MSRH127	12.2±0.4	12.2±0.4	7.5±0.3	7.6	5.0
MSRH1210	12.2±0.4	12.2±0.4	10.0±0.3	7.6	5.0

Appendix A: Electrical Characteristics

I. MSRH0703 TYPE INDUCTORS ELECTRICAL CHARACTERISTICS&TEST CONDITIONS

Part Number	L(μH)	Tolerance	Test Freq.	DCR(Ω)Max	Isat(A)
MSRH73-1R0NT	1.0	± 30%	100kHz,0.25v	0.025	3.60
MSRH73-2R2NT	2.2	± 30%	100kHz,0.25v	0.035	2.50
MSRH73-3R3NT	3.3	± 30%	1kHz,0.25v	0.035	2.50
MSRH73-4R7NT	4.7	± 30%	1kHz,0.25v	0.031	2.00
MSRH73-6R8NT	6.8	± 30%	1kHz,0.25v	0.045	1.85
MSRH73-100MT	10	± 20%	1kHz,0.25v	0.072	1.68
MSRH73-120MT	12	± 20%	1kHz,0.25v	0.098	1.52
MSRH73-150MT	15	± 20%	1kHz,0.25v	0.130	1.33
MSRH73-180MT	18	± 20%	1kHz,0.25v	0.140	1.20
MSRH73-220MT	22	± 20%	1kHz,0.25v	0.190	1.07
MSRH73-270MT	27	± 20%	1kHz,0.25v	0.210	0.96
MSRH73-330MT	33	± 20%	1kHz,0.25v	0.240	0.91
MSRH73-390MT	39	± 20%	1kHz,0.25v	0.320	0.77
MSRH73-470MT	47	± 20%	1kHz,0.25v	0.360	0.76
MSRH73-560MT	56	± 20%	1kHz,0.25v	0.470	0.68
MSRH73-680MT	68	± 20%	1kHz,0.25v	0.520	0.61
MSRH73-820MT	82	± 20%	1kHz,0.25v	0.690	0.57
MSRH73-101MT	100	± 20%	1kHz,0.25v	0.790	0.50
MSRH73-121MT	120	± 20%	1kHz,0.25v	0.890	0.49
MSRH73-151MT	150	± 20%	1kHz,0.25v	1.270	0.43
MSRH73-181MT	180	± 20%	1kHz,0.25v	1.450	0.39
MSRH73-221MT	220	± 20%	1kHz,0.25v	1.650	0.35
MSRH73-271MT	270	± 20%	1kHz,0.25v	2.310	0.32
MSRH73-331MT	330	± 20%	1kHz,0.25v	2.620	0.28
MSRH73-391MT	390	± 20%	1kHz,0.25v	2.940	0.26
MSRH73-471MT	470	± 20%	1kHz,0.25v	4.180	0.24
MSRH73-561MT	560	± 20%	1kHz,0.25v	4.670	0.22
MSRH73-681MT	680	± 20%	1kHz,0.25v	5.730	0.19
MSRH73-821MT	820	± 20%	1kHz,0.25v	6.540	0.18
MSRH73-102MT	1000	± 20%	1kHz,0.25v	9.440	0.16

II. MSRH0704TYPEINDUCTORSELECTRICALCHARACTERISTICS&TESTCONDITIONS

Part Number	L(μH)	Tolerance	Test Freq.	DCR(Ω)Max	Isat(A)
MSRH74-1R0NT	1.0	± 30%	100kHz,0.25v	0.022	7.00
MSRH74-2R2NT	2.2	± 30%	100kHz,0.25v	0.028	4.20
MSRH74-3R3NT	3.3	± 30%	100kHz,0.25v	0.030	3.90
MSRH74-4R7NT	4.7	± 30%	100kHz,0.25v	0.035	3.50
MSRH74-6R8NT	6.8	± 30%	100kHz,0.25v	0.040	2.50
MSRH74-100MT	10	± 20%	1kHz,0.25v	0.049	1.84
MSRH74-120MT	12	± 20%	1kHz,0.25v	0.058	1.71
MSRH74-150MT	15	± 20%	1kHz,0.25v	0.081	1.47
MSRH74-180MT	18	± 20%	1kHz,0.25v	0.091	1.31
MSRH74-220MT	22	± 20%	1kHz,0.25v	0.110	1.23
MSRH74-330MT	33	± 20%	1kHz,0.25v	0.170	0.96
MSRH74-390MT	39	± 20%	1kHz,0.25v	0.230	0.91
MSRH74-470MT	47	± 20%	1kHz,0.25v	0.260	0.88
MSRH74-560MT	56	± 20%	1kHz,0.25v	0.350	0.75
MSRH74-680MT	68	± 20%	1kHz,0.25v	0.380	0.69
MSRH74-820MT	82	± 20%	1kHz,0.25v	0.430	0.61
MSRH74-101MT	100	± 20%	1kHz,0.25v	0.610	0.60
MSRH74-121MT	120	± 20%	1kHz,0.25v	0.660	0.52
MSRH74-151MT	150	± 20%	1kHz,0.25v	0.880	0.46
MSRH74-181MT	180	± 20%	1kHz,0.25v	0.980	0.42
MSRH74-221MT	220	± 20%	1kHz,0.25v	1.170	0.36
MSRH74-271MT	270	± 20%	1kHz,0.25v	1.640	0.34
MSRH74-331MT	330	± 20%	1kHz,0.25v	1.860	0.32
MSRH74-391MT	390	± 20%	1kHz,0.25v	2.850	0.29
MSRH74-471MT	470	± 20%	1kHz,0.25v	3.010	0.26
MSRH74-561MT	560	± 20%	1kHz,0.25v	3.620	0.23
MSRH74-681MT	680	± 20%	1kHz,0.25v	4.630	0.22
MSRH74-821MT	820	± 20%	1kHz,0.25v	5.200	0.20
MSRH74-102MT	1000	± 20%	1kHz,0.25v	6.000	0.18

III. MSRH1204 TYPE INDUCTORS ELECTRICAL CHARACTERISTICS & TEST CONDITIONS

Part Number	L(μH)	Tolerance	Test Freq.	DCR(Ω)Max	Isat(A)
MSRH124-1R0NT	1.0	± 30%	100kHz,0.25v	0.008	7.00
MSRH124-2R2NT	2.2	± 30%	100kHz,0.25v	0.009	5.70
MSRH124-3R3NT	3.3	± 30%	100kHz,0.25v	0.015	5.20
MSRH124-4R7NT	4.7	± 30%	100kHz,0.25v	0.018	4.90
MSRH124-6R8NT	6.8	± 30%	100kHz,0.25v	0.023	4.50
MSRH124-8R2NT	8.2	± 30%	100kHz,0.25v	0.026	4.20
MSRH124-100MT	10	± 20%	1kHz,0.25v	0.028	4.00
MSRH124-120MT	12	± 20%	1kHz,0.25v	0.038	3.50
MSRH124-150MT	15	± 20%	1kHz,0.25v	0.050	3.20
MSRH124-180MT	18	± 20%	1kHz,0.25v	0.057	3.10
MSRH124-220MT	22	± 20%	1kHz,0.25v	0.066	2.90
MSRH124-270MT	27	± 20%	1kHz,0.25v	0.080	2.80
MSRH124-330MT	33	± 20%	1kHz,0.25v	0.097	2.70
MSRH124-390MT	39	± 20%	1kHz,0.25v	0.132	2.10
MSRH124-470MT	47	± 20%	1kHz,0.25v	0.150	1.90
MSRH124-560MT	56	± 20%	1kHz,0.25v	0.190	1.80
MSRH124-680MT	68	± 20%	1kHz,0.25v	0.220	1.50
MSRH124-820MT	82	± 20%	1kHz,0.25v	0.260	1.30
MSRH124-101MT	100	± 20%	1kHz,0.25v	0.308	1.20
MSRH124-121MT	120	± 20%	1kHz,0.25v	0.380	1.10
MSRH124-151MT	150	± 20%	1kHz,0.25v	0.530	0.95
MSRH124-181MT	180	± 20%	1kHz,0.25v	0.620	0.85
MSRH124-221MT	220	± 20%	1kHz,0.25v	0.700	0.80
MSRH124-271MT	270	± 20%	1kHz,0.25v	0.876	0.60
MSRH124-331MT	330	± 20%	1kHz,0.25v	0.990	0.50
MSRH124-471MT	470	± 20%	1kHz,0.25v	1.300	0.40
MSRH124-152MT	1500	± 20%	1kHz,0.25v	4.000	0.29
MSRH124-333MT	33000	± 20%	1kHz,0.25v	95.000	0.07

III. MSRH1205 TYPE INDUCTORS ELECTRICAL CHARACTERISTICS & TEST CONDITIONS

Part Number	L(μH)	Tolerance	Test Freq.	DCR(Ω)Max	Isat(A)
MSRH125-1R0NT	1.0	± 30%	100kHz,0.25v	0.010	8.00
MSRH125-2R2NT	2.2	± 30%	100kHz,0.25v	0.014	7.80
MSRH125-3R3NT	3.3	± 30%	100kHz,0.25v	0.014	7.60
MSRH125-4R7NT	4.7	± 30%	100kHz,0.25v	0.020	5.60
MSRH125-6R8NT	6.8	± 30%	100kHz,0.25v	0.020	5.20
MSRH125-8R2NT	8.2	± 30%	100kHz,0.25v	0.021	4.50
MSRH125-100MT	10	± 20%	1kHz,0.25v	0.025	4.20
MSRH125-120MT	12	± 20%	1kHz,0.25v	0.027	3.50
MSRH125-150MT	15	± 20%	1kHz,0.25v	0.030	3.30
MSRH125-180MT	18	± 20%	1kHz,0.25v	0.034	3.00
MSRH125-220MT	22	± 20%	1kHz,0.25v	0.042	2.80
MSRH125-270MT	27	± 20%	1kHz,0.25v	0.051	2.30
MSRH125-330MT	33	± 20%	1kHz,0.25v	0.065	2.10
MSRH125-390MT	39	± 20%	1kHz,0.25v	0.068	2.00
MSRH125-470MT	47	± 20%	1kHz,0.25v	0.075	1.80
MSRH125-560MT	56	± 20%	1kHz,0.25v	0.110	1.70
MSRH125-680MT	68	± 20%	1kHz,0.25v	0.120	1.50
MSRH125-820MT	82	± 20%	1kHz,0.25v	0.140	1.40
MSRH125-101MT	100	± 20%	1kHz,0.25v	0.198	1.30

III. MSRH1205 TYPE INDUCTORS ELECTRICAL CHARACTERISTICS & TEST CONDITIONS

Part Number	L(μH)	Tolerance	Test Freq.	DCR(Ω)Max	Isat(A)
MSRH125-121MT	120	±20%	1kHz,0.25v	0.220	1.10
MSRH125-151MT	150	±20%	1kHz,0.25v	0.230	1.00
MSRH125-181MT	180	±20%	1kHz,0.25v	0.290	0.90
MSRH125-221MT	220	±20%	1kHz,0.25v	0.400	0.80
MSRH125-271MT	270	±20%	1kHz,0.25v	0.460	0.75
MSRH125-331MT	330	±20%	1kHz,0.25v	0.510	0.68
MSRH125-391MT	390	±20%	1kHz,0.25v	0.690	0.65
MSRH125-471MT	470	±20%	1kHz,0.25v	0.770	0.58
MSRH125-561MT	560	±20%	1kHz,0.25v	0.860	0.54
MSRH125-681MT	680	±20%	1kHz,0.25v	1.200	0.48
MSRH125-821MT	820	±20%	1kHz,0.25v	1.340	0.43
MSRH125-102MT	1000	±20%	1kHz,0.25v	1.900	0.40
MSRH125-472MT	4700	±20%	1kHz,0.25v	8.280	0.30
MSRH125-802MT	8000	±20%	1kHz,0.25v	15.000	0.22
MSRH125-103MT	10000	±20%	1kHz,0.25v	20.000	0.12

IV. MSRH1207 TYPE INDUCTORS ELECTRICAL CHARACTERISTICS & TEST CONDITIONS

Part Number	L(μH)	Tolerance	Test Freq.	DCR(Ω)Max	Isat(A)
MSRH127-1R0NT	1.0	±30%	100kHz,0.25v	0.0070	10.00
MSRH127-2R2NT	2.2	±30%	100kHz,0.25v	0.0115	8.00
MSRH127-3R3NT	3.3	±30%	100kHz,0.25v	0.0135	8.00
MSRH127-4R7NT	4.7	±30%	100kHz,0.25v	0.0158	7.00
MSRH127-6R8NT	6.8	±30%	100kHz,0.25v	0.0190	6.80
MSRH127-8R2NT	8.2	±30%	100kHz,0.25v	0.0200	5.90
MSRH127-100MT	10	±20%	1kHz,0.25v	0.0210	5.60
MSRH127-120MT	12	±20%	1kHz,0.25v	0.0240	4.90
MSRH127-150MT	15	±20%	1kHz,0.25v	0.0270	4.50
MSRH127-180MT	18	±20%	1kHz,0.25v	0.0392	3.90
MSRH127-220MT	22	±20%	1kHz,0.25v	0.0432	3.60
MSRH127-270MT	27	±20%	1kHz,0.25v	0.0459	3.40
MSRH127-330MT	33	±20%	1kHz,0.25v	0.0648	3.00
MSRH127-390MT	39	±20%	1kHz,0.25v	0.0729	2.75
MSRH127-470MT	47	±20%	1kHz,0.25v	0.1000	2.50
MSRH127-560MT	56	±20%	1kHz,0.25v	0.110	2.35
MSRH127-680MT	68	±20%	1kHz,0.25v	0.140	2.10
MSRH127-820MT	82	±20%	1kHz,0.25v	0.160	1.95
MSRH127-101MT	100	±20%	1kHz,0.25v	0.220	1.70
MSRH127-121MT	120	±20%	1kHz,0.25v	0.250	1.60
MSRH127-151MT	150	±20%	1kHz,0.25v	0.280	1.42
MSRH127-181MT	180	±20%	1kHz,0.25v	0.350	1.30
MSRH127-221MT	220	±20%	1kHz,0.25v	0.390	1.16
MSRH127-271MT	270	±20%	1kHz,0.25v	0.560	1.06
MSRH127-331MT	330	±20%	1kHz,0.25v	0.640	0.95
MSRH127-391MT	390	±20%	1kHz,0.25v	0.700	0.88
MSRH127-471MT	470	±20%	1kHz,0.25v	0.980	0.79
MSRH127-561MT	560	±20%	1kHz,0.25v	1.070	0.73
MSRH127-681MT	680	±20%	1kHz,0.25v	1.460	0.67
MSRH127-821MT	820	±20%	1kHz,0.25v	1.640	0.60
MSRH127-102MT	1000	±20%	1kHz,0.25v	1.820	0.55

V. MSRH1210 TYPE INDUCTORS ELECTRICAL CHARACTERISTICS & TEST CONDITIONS

Part Number	L(μ H)	Tolerance	Test Freq.	DCR(Ω)Max	Isat(A)
MSRH1210-1R0NT	1.00	$\pm 30\%$	100kHz,0.25v	0.0070	10.1
MSRH1210-2R2NT	2.20	$\pm 30\%$	100kHz,0.25v	0.0100	8.59
MSRH1210-3R3NT	3.30	$\pm 30\%$	100kHz,0.25v	0.0117	8.00
MSRH1210-4R7NT	4.70	$\pm 30\%$	100kHz,0.25v	0.0134	7.55
MSRH1210-6R8NT	6.80	$\pm 30\%$	100kHz,0.25v	0.0168	6.86
MSRH1210-8R2NT	8.20	$\pm 30\%$	100kHz,0.25v	0.0185	6.68
MSRH1210-100MT	10.0	$\pm 20\%$	1kHz,0.25v	0.0200	6.51
MSRH1210-120MT	12.0	$\pm 20\%$	1kHz,0.25v	0.0220	6.20
MSRH1210-150MT	15.0	$\pm 20\%$	1kHz,0.25v	0.0255	5.76
MSRH1210-180MT	18.0	$\pm 20\%$	1kHz,0.25v	0.0273	5.57
MSRH1210-220MT	22.0	$\pm 20\%$	1kHz,0.25v	0.0305	5.27
MSRH1210-270MT	27.0	$\pm 20\%$	1kHz,0.25v	0.0329	5.07
MSRH1210-330MT	33.0	$\pm 20\%$	1kHz,0.25v	0.0390	4.66
MSRH1210-390MT	39.0	$\pm 20\%$	1kHz,0.25v	0.0514	4.06
MSRH1210-470MT	47.0	$\pm 20\%$	1kHz,0.25v	0.0590	3.79
MSRH1210-560MT	56.0	$\pm 20\%$	1kHz,0.25v	0.0638	3.64
MSRH1210-680MT	68.0	$\pm 20\%$	1kHz,0.25v	0.0830	3.19
MSRH1210-820MT	82.0	$\pm 20\%$	1kHz,0.25v	0.0940	3.00
MSRH1210-101MT	100	$\pm 20\%$	1kHz,0.25v	0.125	2.60
MSRH1210-121MT	120	$\pm 20\%$	1kHz,0.25v	0.140	2.46
MSRH1210-151MT	150	$\pm 20\%$	1kHz,0.25v	0.180	2.17
MSRH1210-181MT	180	$\pm 20\%$	1kHz,0.25v	0.200	2.06
MSRH1210-221MT	220	$\pm 20\%$	1kHz,0.25v	0.246	1.86
MSRH1210-271MT	270	$\pm 20\%$	1kHz,0.25v	0.324	1.62
MSRH1210-331MT	330	$\pm 20\%$	1kHz,0.25v	0.362	1.53
MSRH1210-391MT	390	$\pm 20\%$	1kHz,0.25v	0.396	1.46
MSRH1210-471MT	470	$\pm 20\%$	1kHz,0.25v	0.501	1.30
MSRH1210-561MT	560	$\pm 20\%$	1kHz,0.25v	0.546	1.25
MSRH1210-681MT	680	$\pm 20\%$	1kHz,0.25v	0.685	1.11
MSRH1210-821MT	820	$\pm 20\%$	1kHz,0.25v	0.836	0.98
MSRH1210-102MT	1000	$\pm 20\%$	1kHz,0.25v	0.955	0.94

Products with other electrical characteristic can be provided upon customer's

request. Please contact your local sales.

www.meledinc.com