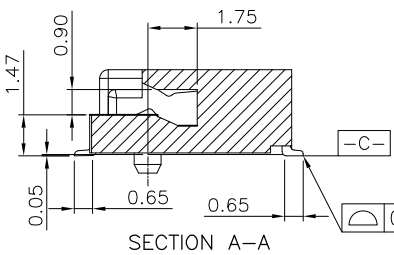
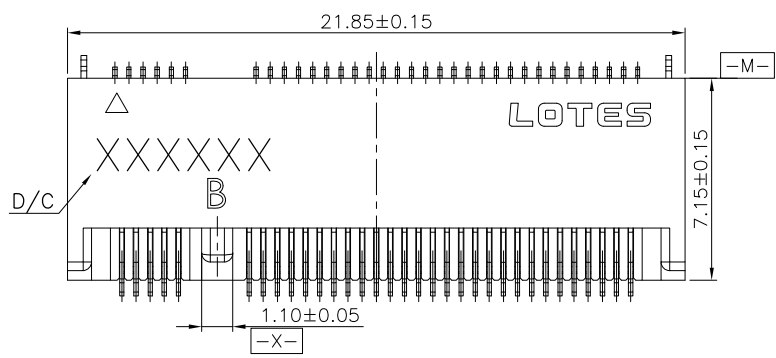
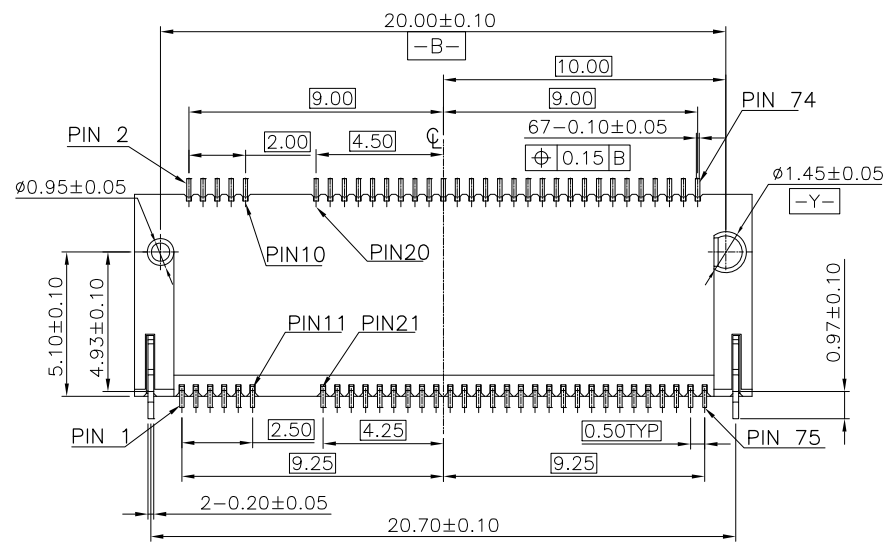
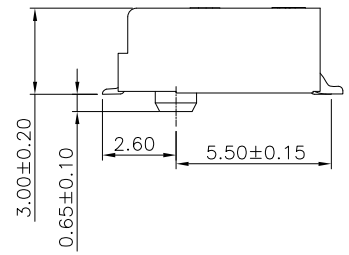
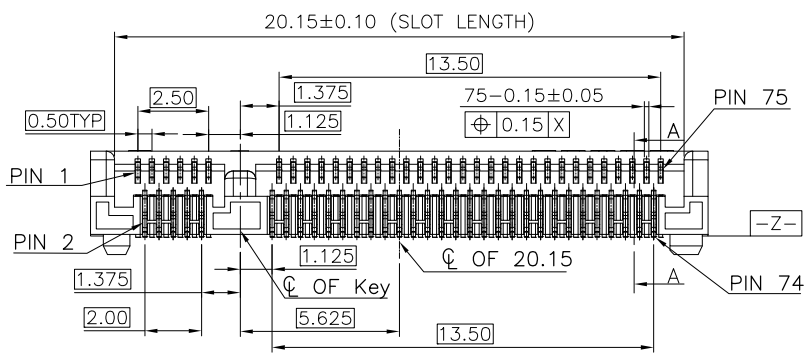


REV.	ECR/N NO./DESCRIPTION	DATE	DRAWN	CHECKED	APPROVE
1	SN14040	05/06'14	Jinjin.Tu	Vito	Barney



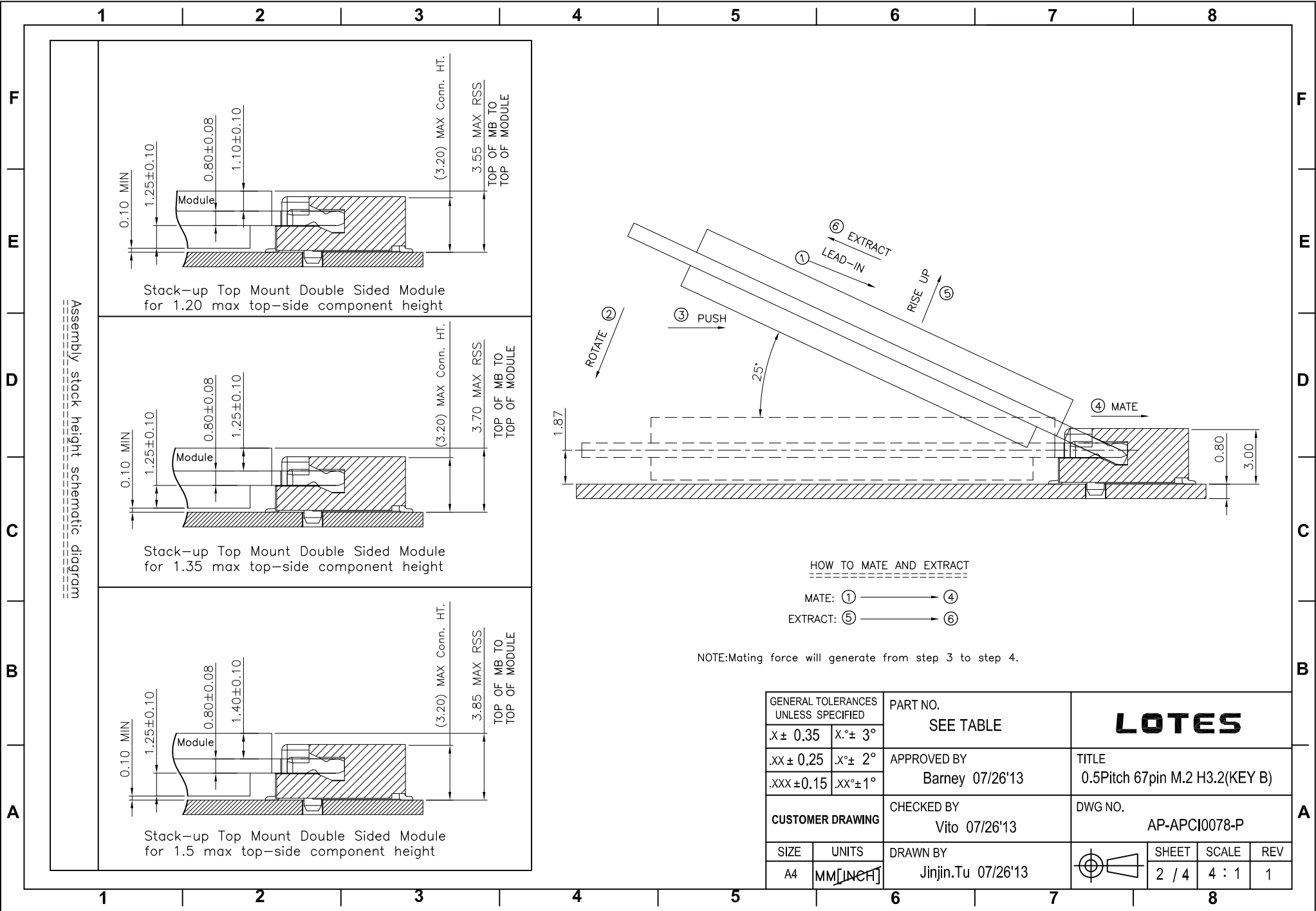
- NOTES:
- MATERIAL SPECIFICATION:
    - 1-1. HOUSING: LCP+40%GF, UL94V-0, COLOR: BLACK.
    - 1-2. CONTACT: COPPER ALLOY.
    - 1-3. SMT TAB: S50C.
  - PLATING SPECIFICATION:
    - 2-1. CONTACT:
      - 50u" MIN. NICKEL UNDER PLATING OVER ALL.
      - G/F PLATING ON SOLDER AREA.
      - GOLD PLATING ON CONTACT AREA: SEE TABLE
    - 2-2. SMT TAB:
      - 50u" MIN. NICKEL UNDER PLATING OVER ALL.
      - 80u" MIN. MATTE TIN PLATING ON SOLDER AREA.
  - HF COMPLIANT, ROHS COMPLIANT.
  - DATE CODE: XXXXXX
    - DAY
    - WEEK
    - YEAR
  - MECHANICAL PERFORMANCE:
    - 5-1. DURABILITY: SEE TABLE
  - ELECTRICAL PERFORMANCE:
    - 6-1. CURRENT: 0.5A PER PIN.
    - 6-2. LLCR: INITIAL 55mΩ MAX. ; FINAL ΔLLCR=20mΩ MAX..
  - IR REFLOW:
    - THE TEMPERATURE SHALL BE 260±5°C MAINTAINING 10±1 SECONDS.
  - PRODUCT NUMBER NOTE
 

A	P	C	I	X	X	X	X	X	X	X	X	X	X	X

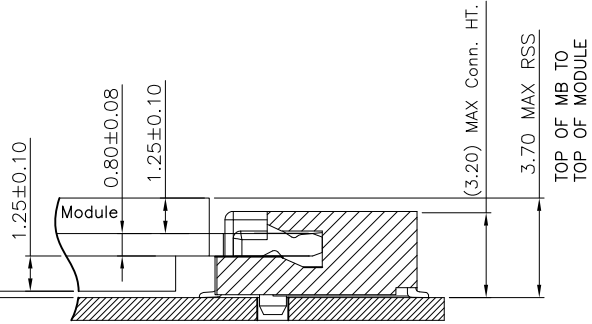


PART NO.	CONTACT PLATING	DURABILITY
APCI0078-P001A	30u" MIN. GOLD	60 CYCLES.
APCI0078-P002A	1~3u" MIN. GOLD	25 CYCLES.
APCI0078-P003A	10u" MIN. GOLD	25 CYCLES.

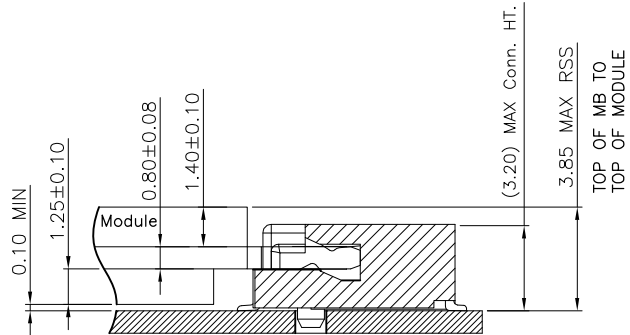
GENERAL TOLERANCES UNLESS SPECIFIED		PART NO. SEE TABLE	<b>LOTES</b>		
X ± 0.35	X° ± 3°				
.XX ± 0.25	X° ± 2°				
.XXX ± 0.15	.XX° ± 1°	APPROVED BY Barney 07/26'13	TITLE 0.5Pitch 67pin M.2 H3.2(KEY B)		
CUSTOMER DRAWING		CHECKED BY Vito 07/26'13	DWG NO. AP-APCI0078-P		
SIZE A4	UNITS MM [INCH]	DRAWN BY Jinjin.Tu 07/26'13	SHEET 1 / 4	SCALE 4 : 1	REV 1



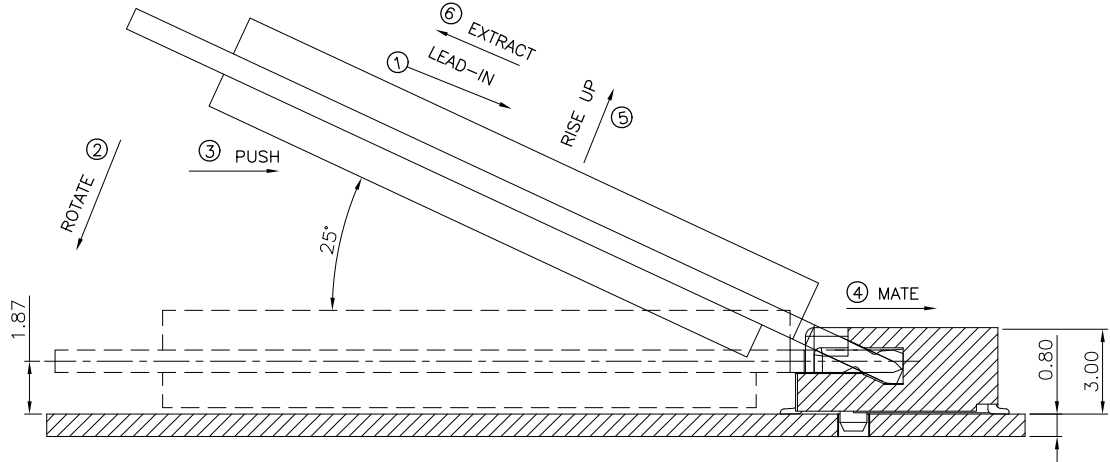
Stack-up Top Mount Double Sided Module for 1.20 max top-side component height



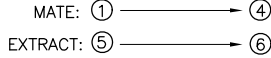
Stack-up Top Mount Double Sided Module for 1.35 max top-side component height



Stack-up Top Mount Double Sided Module for 1.5 max top-side component height



HOW TO MATE AND EXTRACT



NOTE: Mating force will generate from step 3 to step 4.

GENERAL TOLERANCES UNLESS SPECIFIED		PART NO. SEE TABLE	<b>LOTES</b>		
X ± 0.35	X° ± 3°				
.XX ± 0.25	X° ± 2°	APPROVED BY Barney 07/26'13	TITLE 0.5Pitch 67pin M.2 H3.2(KEY B)		
.XXX ± 0.15	.XX° ± 1°	CHECKED BY Vito 07/26'13	DWG NO. AP-APCI0078-P		
CUSTOMER DRAWING		DRAWN BY Jinjin.Tu 07/26'13	SHEET 2 / 4	SCALE 4 : 1	REV 1
SIZE A4	UNITS MM [INCH]				



