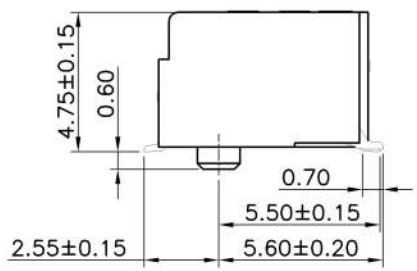
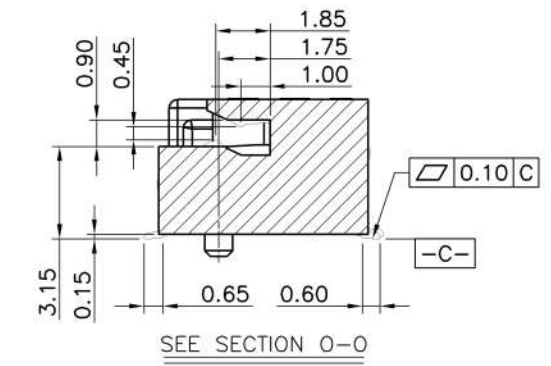
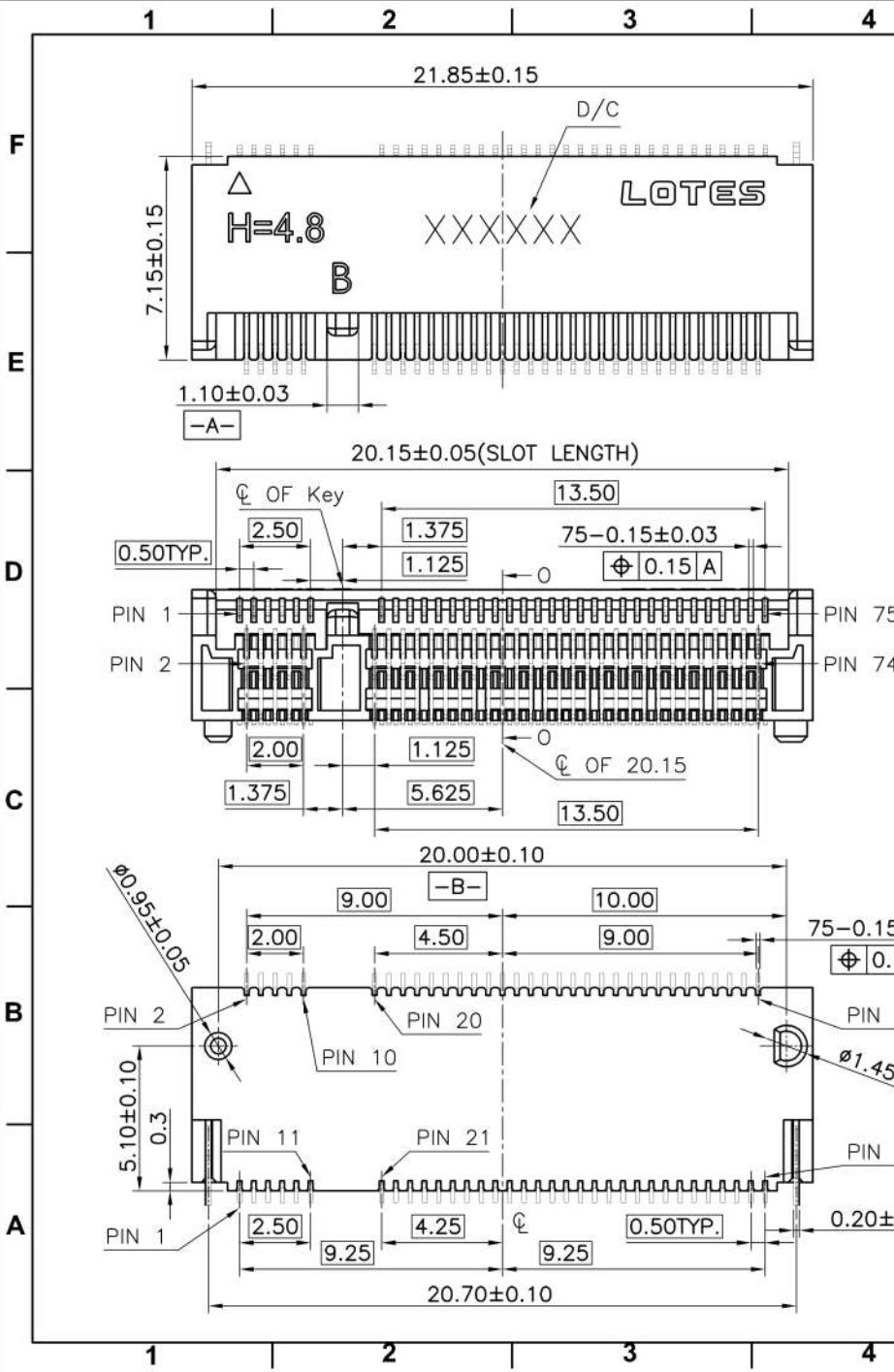


REV.	ECR/N NO./DESCRIPTION	DATE	DRAWN	CHECKED	APPROVE
1	SN15037	04/29'15	Lxh	Vito	Barney



GENERAL TOLERANCES UNLESS SPECIFIED		PART NO. SEE TABLE	LOTES		
.X± 0.35	X.°± 3°				
.XX± 0.25	X.°± 2°		CHECKED BY Vito	DWG NO. AP-APCI0103	
.XXX± 0.15	.XX°± 1°	DRAWN BY Lxh	SHEET 1 / 5	SCALE 4:1	REV 1

TABLE:

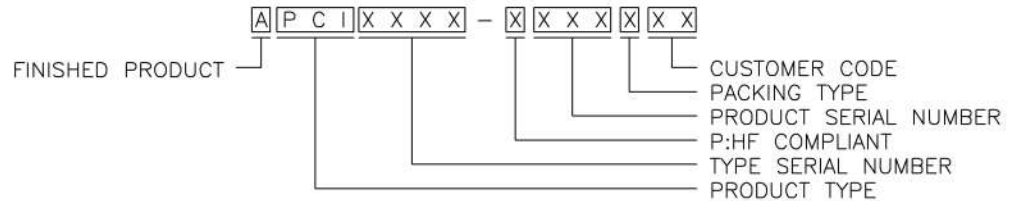
NO.	PART NO.	DESCRIPTION	DURABILITY
1	APCI0103-P001A	GOLD G/F ON CONTACT AREA	25 CYCLES
		GOLD G/F ON SOLDER AREA	
2	APCI0103-P002A	GOLD 10u" ON CONTACT AREA	25 CYCLES
		GOLD G/F ON SOLDER AREA	
3	APCI0103-P003A	GOLD 15u" ON CONTACT AREA	25 CYCLES
		GOLD G/F ON SOLDER AREA	
4	APCI0103-P004A	GOLD 30u" ON CONTACT AREA	60 CYCLES
		GOLD G/F ON SOLDER AREA	

Notes:

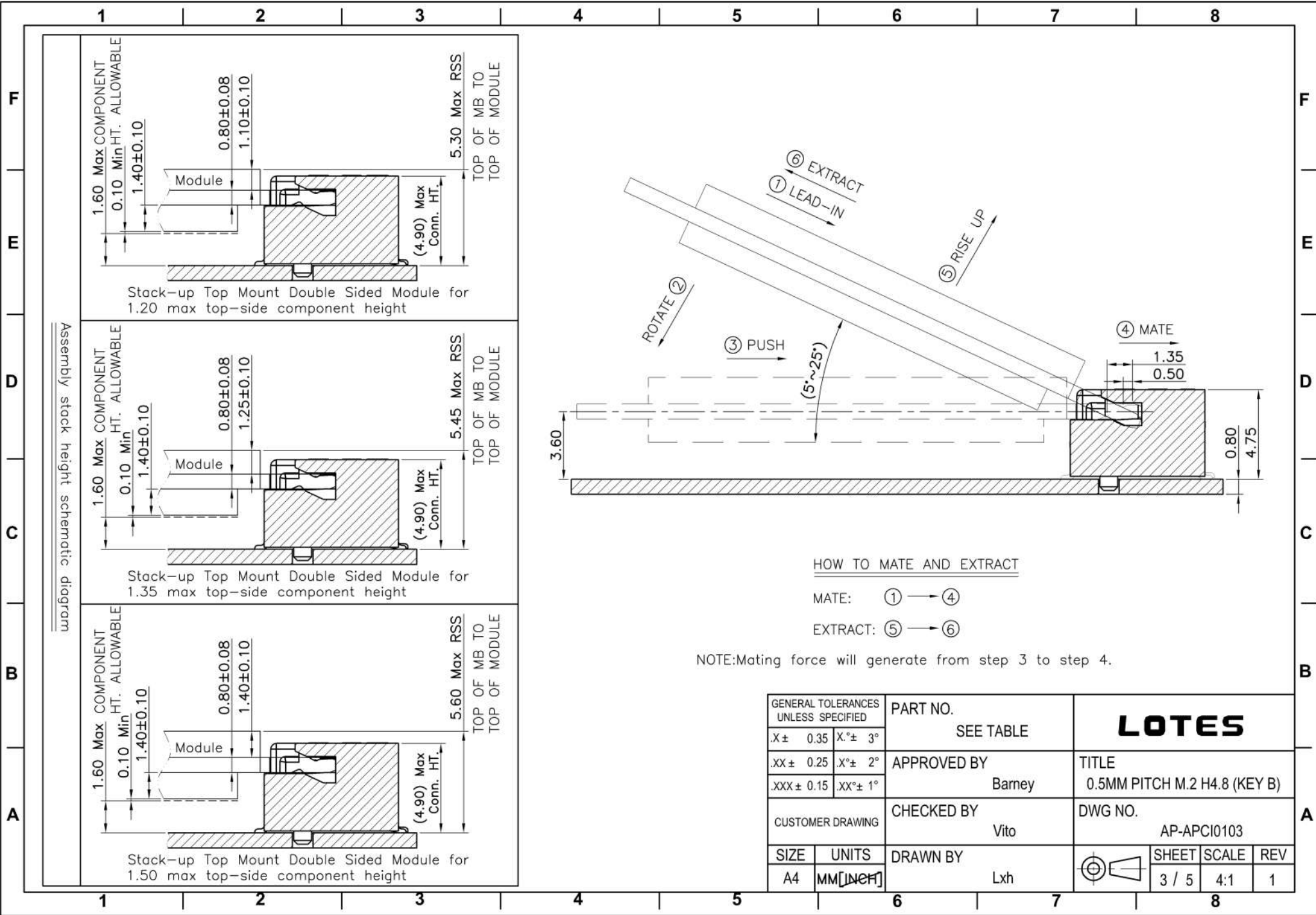
1. MATERIAL SPECIFICATION:
 - 1.1. HOUSING:LCP+40%GF,UL94V-0,COLOR:BLACK.
 - 1.2. CONTACT:COPPER ALLOY.
 - 1.3. PEG:STEEL.
2. PLATING SPECIFICATION:
 - 2.1. CONTACT:50u" MIN.NICKEL UNDER PLATING OVER ALL.PLATING ON SOLDER AREA:SEE TABLE GOLD PLATING ON CONTACT AREA:SEE TABLE
 - 2.2. PEG:50u" MIN. NICKEL UNDER PLATING OVER ALL. 80u" MIN. MATTE TIN PLATING ON SOLDER AREA.
3. HF COMPLIANT, RoHS COMPLIANT.
4. DATE CODE: XX XX XX

XX — DAY
 XX — WEEK
 XX — YEAR
5. MECHANICAL PERFORMANCE:
 - 5.1. DURABILITY: SEE TABLE
6. ELECTRICAL PERFORMANCE:
 - 6.1. CURRENT: 0.5A PER PIN.
 - 6.2. LLCR: INITIAL 55mΩ MAX.;FINAL ΔLLCR=20mΩ MAX.
7. IR REFLOW:

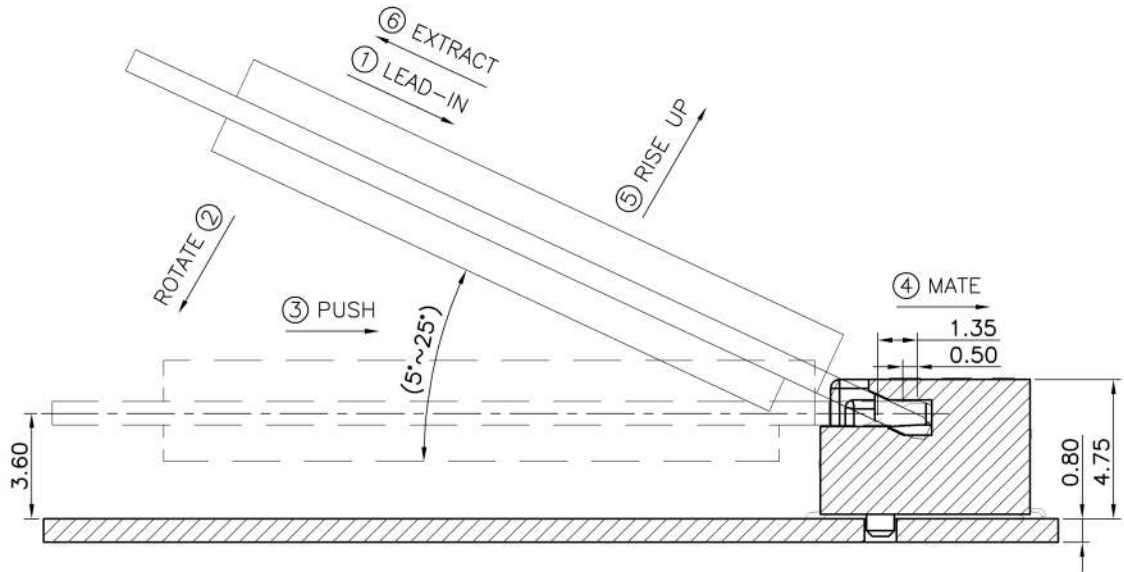
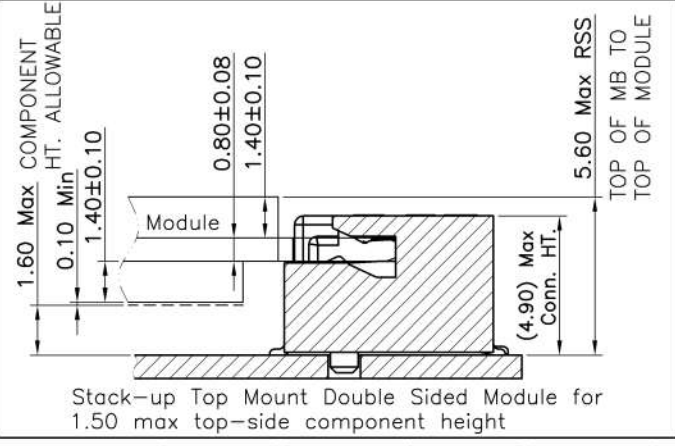
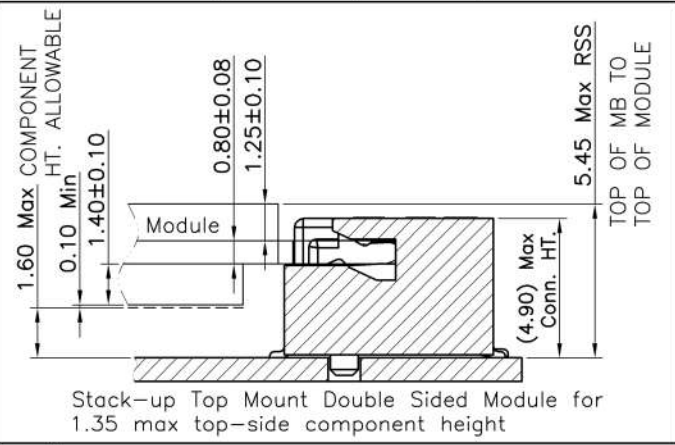
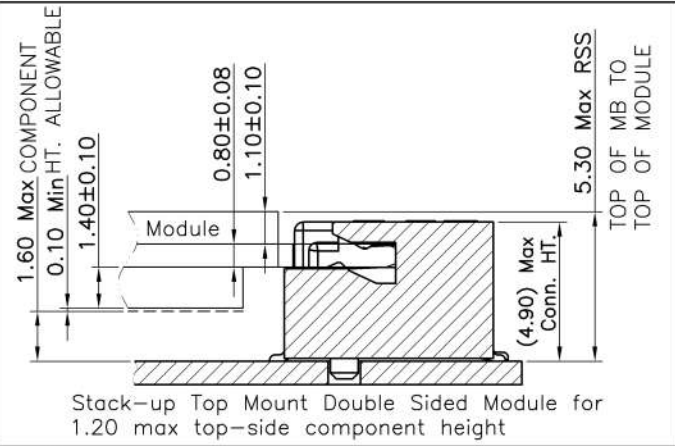
THE TEMPERATURE SHALL BE 260±5°C MAINTAINING 10±1 SECONDS.
8. PRODUCT NUMBER NOTE:



GENERAL TOLERANCES UNLESS SPECIFIED		PART NO.	LOTES			
X ± 0.35	X° ± 3°	SEE TABLE				
.XX ± 0.25	X° ± 2°	APPROVED BY	TITLE			
.XXX ± 0.15	.XX° ± 1°	Barney	0.5MM PITCH M.2 H4.8 (KEY B)			
CUSTOMER DRAWING		CHECKED BY	DWG NO.			
		Vito	AP-APCI0103			
SIZE	UNITS	DRAWN BY		SHEET	SCALE	REV
A4	MM [INCH]	Lxh		2 / 5	4:1	1



Assembly stack height schematic diagram

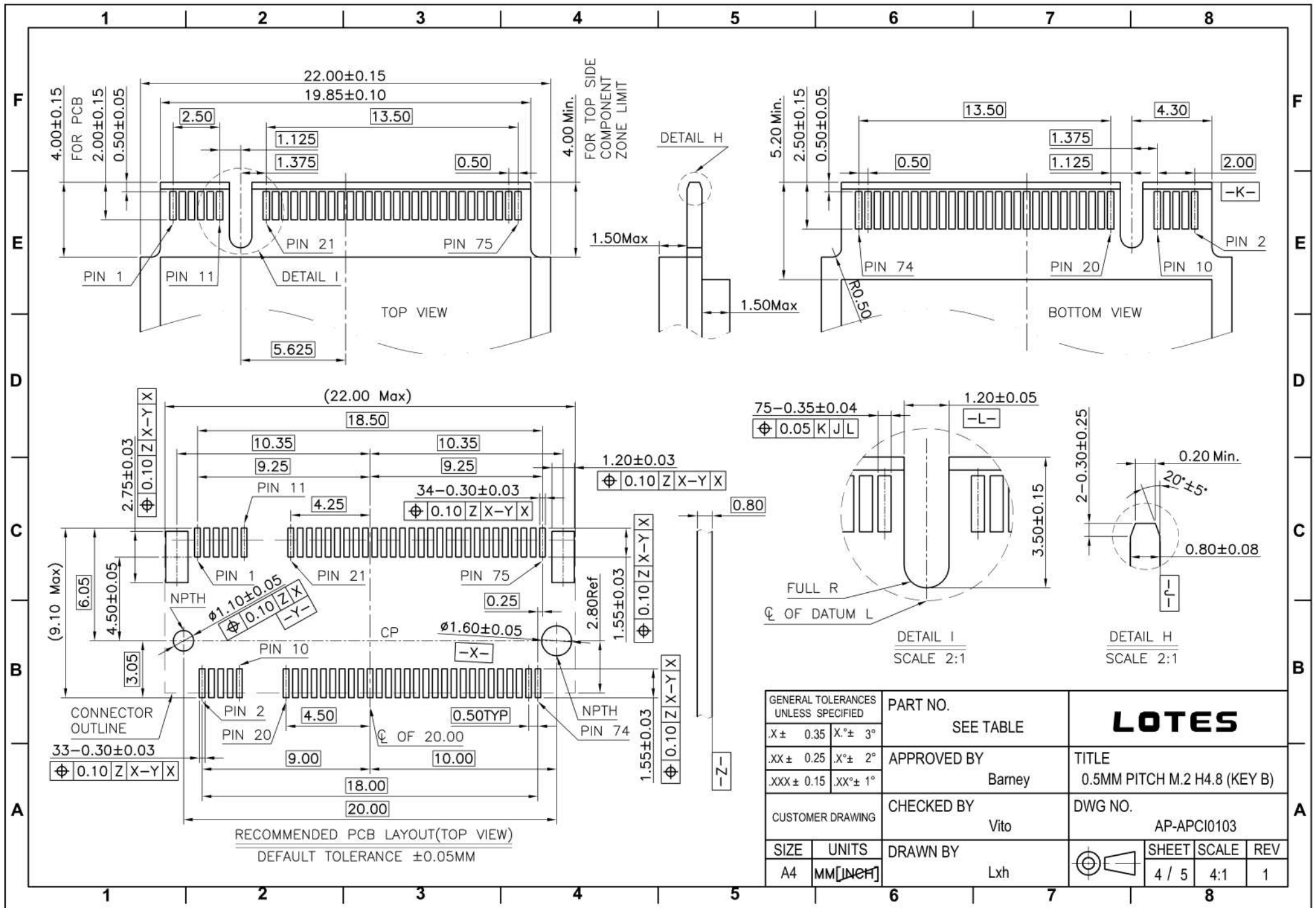


HOW TO MATE AND EXTRACT

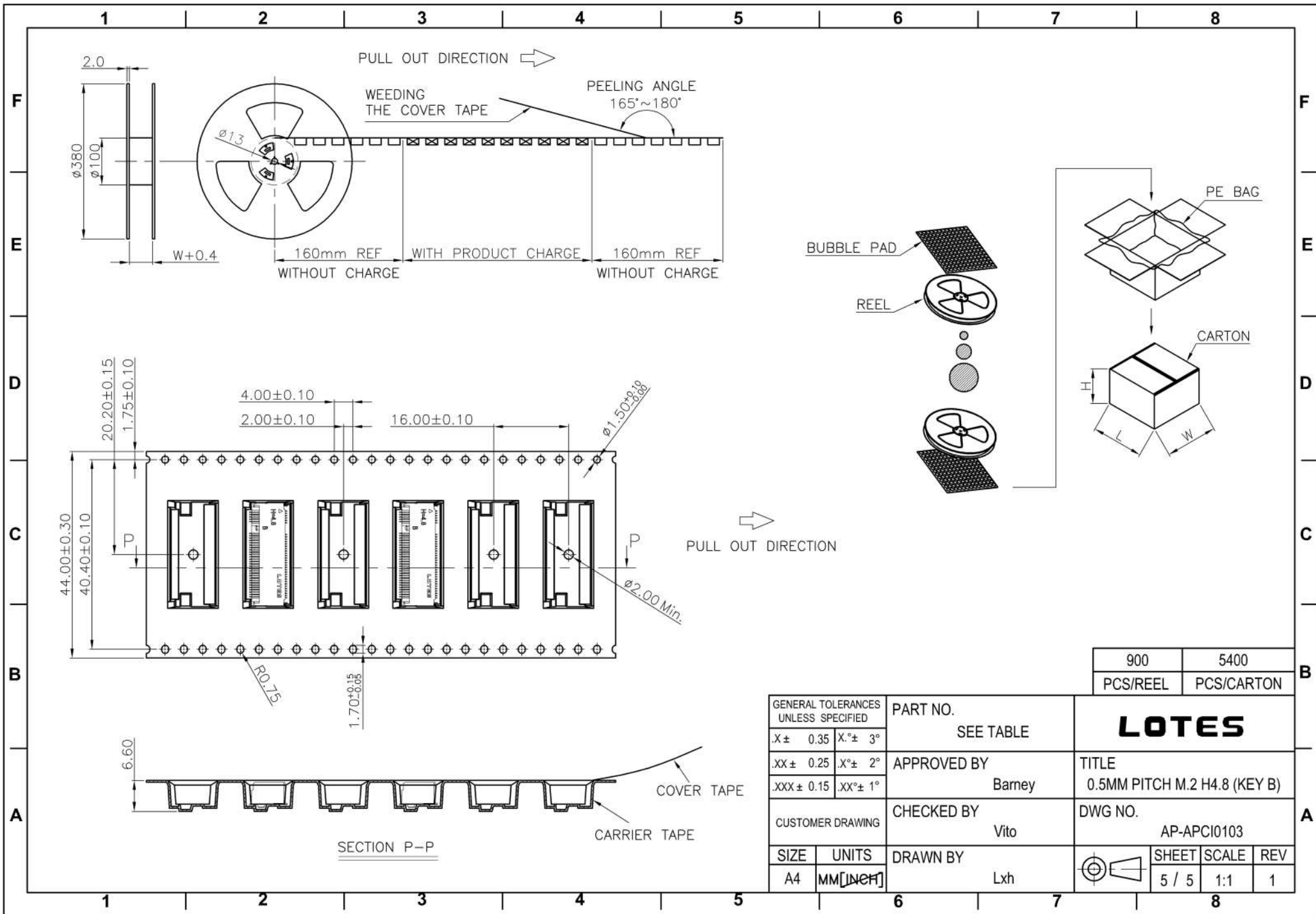
- MATE: ① → ④
EXTRACT: ⑤ → ⑥

NOTE: Mating force will generate from step 3 to step 4.

GENERAL TOLERANCES UNLESS SPECIFIED		PART NO. SEE TABLE	LOTES		
X± 0.35	X.°± 3°				
.XX± 0.25	.X.°± 2°	APPROVED BY Barney	TITLE 0.5MM PITCH M.2 H4.8 (KEY B)		
.XXX± 0.15	.XX.°± 1°	CHECKED BY Vito	DWG NO. AP-APCI0103		
SIZE A4	UNITS MM [INCH]	DRAWN BY Lxh	SHEET 3 / 5	SCALE 4:1	REV 1
CUSTOMER DRAWING					



GENERAL TOLERANCES UNLESS SPECIFIED		PART NO. SEE TABLE	LOTES		
X± 0.35	X.°± 3°				
.XX± 0.25	.X°± 2°		CHECKED BY Vito	DWG NO. AP-APCI0103	
.XXX± 0.15	.XX°± 1°	DRAWN BY Lxh	SHEET 4 / 5	SCALE 4:1	REV 1



900	5400
PCS/REEL	PCS/CARTON

GENERAL TOLERANCES UNLESS SPECIFIED		PART NO. SEE TABLE	LOTES		
.X± 0.35	X.°± 3°				
.XX± 0.25	X.°± 2°		APPROVED BY Barney	TITLE 0.5MM PITCH M.2 H4.8 (KEY B)	
.XXX± 0.15	.XX°± 1°	CHECKED BY Vito	DWG NO. AP-APCI0103		
SIZE A4	UNITS MM [INCH]	DRAWN BY Lxh	SHEET 5 / 5		
			SCALE 1:1		
			REV 1		