

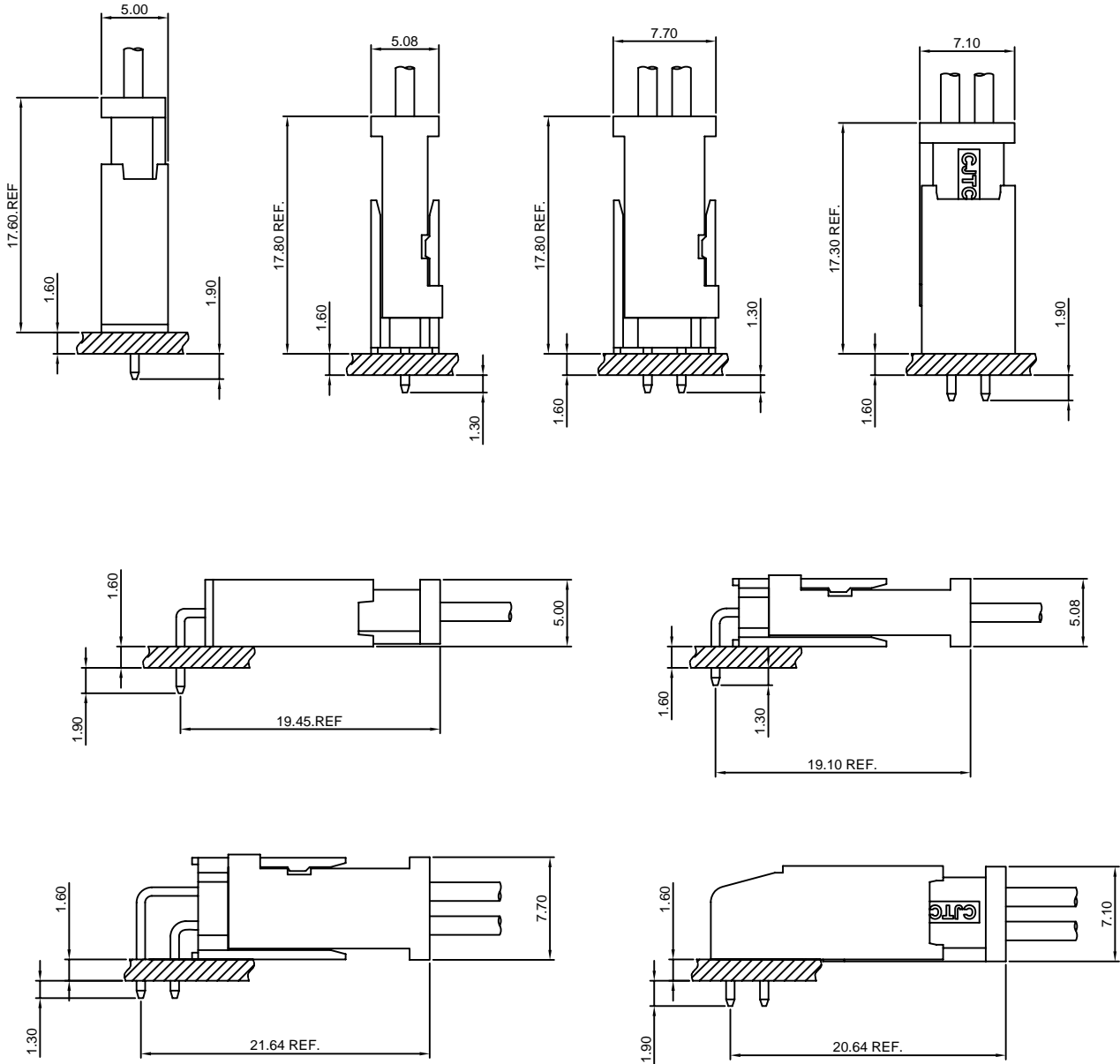
## Specifications

- Current rating:3A AC,DC
- Voltage rating:250V AC,DC
- Temperature range:-40°C~+105°C
- Contact resistance:20mΩMax.
- Insulation resistance:1000MΩMin.
- Withstanding voltage:1000V AC/minute
- \*Compliant with RoHS and REACH\*
- \*Meet the HF/Halogen Free,need to customize\*
- \*Contact CJT for details\*

## Standards



# Assembly layout

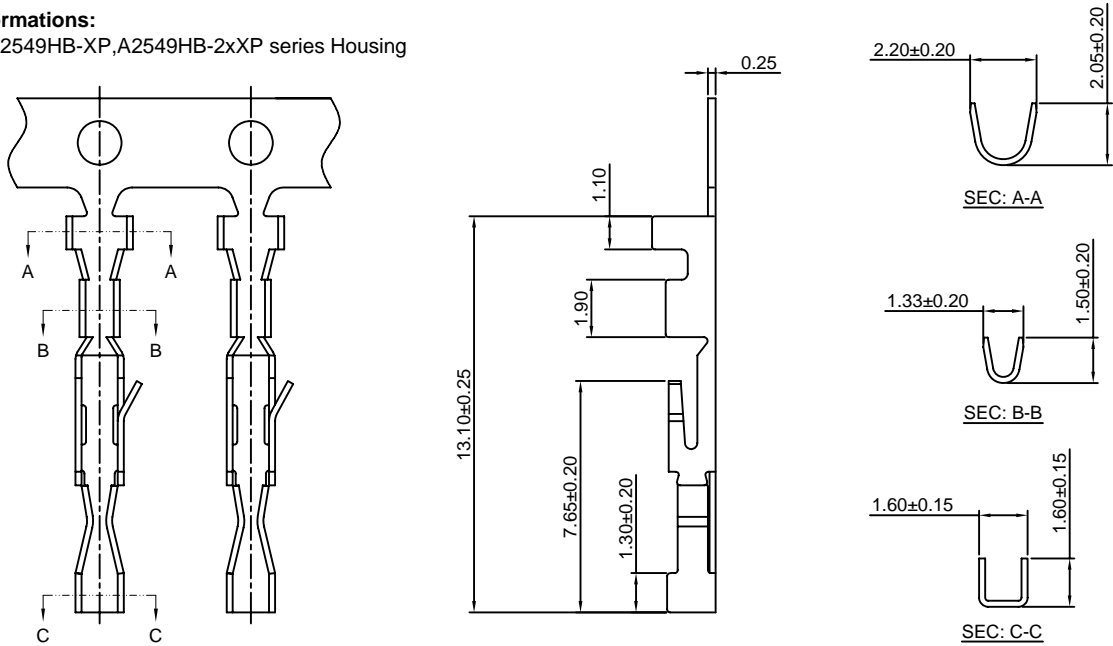


### A2549-T-A

2.54mm Pitch Crimp Terminal

**Reference Informations:**

\*Used in CJT A2549HB-XP,A2549HB-2xXP series Housing



**Ordering information & Specifications:**

Unit:mm

Part NO.	Wire Range	Insulation O.D.	Material	Finish	Qty/reel
A2549-TP-A	AWG#22-#28	1.55mm(max)	Phosphor Bronze	Tin over Nickel	15,000 PCS
A2549-GP-A	AWG#22-#28	1.55mm(max)	Phosphor Bronze	Gold over Nickel	15,000 PCS

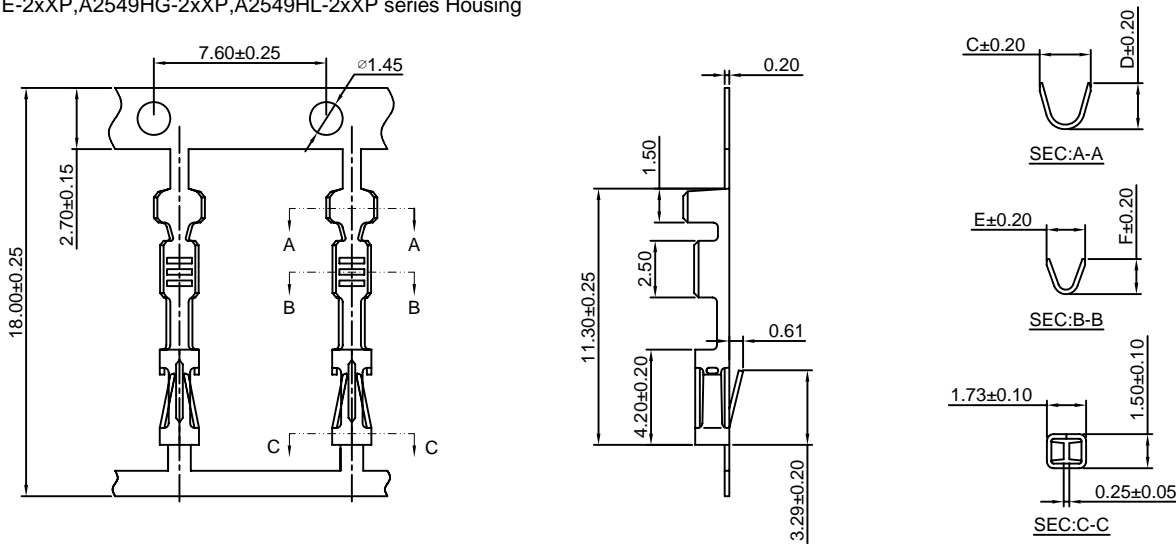
Optional Gold plating available but MOQ requested

### A2549-T-C

2.54mm Pitch Crimp Terminal

**Reference Informations:**

\*Used in CJT A2549HC-XP,A2549HC-2xXP,A2549HD-XP,A2549HD-2xXP, A2549HE-2xXP,A2549HG-2xXP,A2549HL-2xXP series Housing



**Ordering information & Specifications:**

Unit:mm

Part NO.	Wire Range	Insulation O.D.	Material	Finish	C	D	E	F	Qty/reel
A2549-TP-C	AWG#22-#26	1.55mm(max)	Phosphor Bronze	Tin over Nickel	2.25	2.03	1.70	1.55	8,000 PCS
A2549-GP-C	AWG#22-#26	1.55mm(max)	Phosphor Bronze	Gold over Nickel	2.25	2.03	1.70	1.55	8,000 PCS
A2549-TP-C-H	AWG#20-#24	1.90mm(max)	Phosphor Bronze	Tin over Nickel	2.61	2.03	2.03	1.80	8,000 PCS
A2549-GP-C-H	AWG#20-#24	1.90mm(max)	Phosphor Bronze	Gold over Nickel	2.61	2.03	2.03	1.80	8,000 PCS
A2549-TP-C-L	AWG#28-#32	0.90mm(max)	Phosphor Bronze	Tin over Nickel	2.01	1.54	1.35	1.23	8,000 PCS
A2549-GP-C-L	AWG#28-#32	0.90mm(max)	Phosphor Bronze	Gold over Nickel	2.01	1.54	1.35	1.23	8,000 PCS

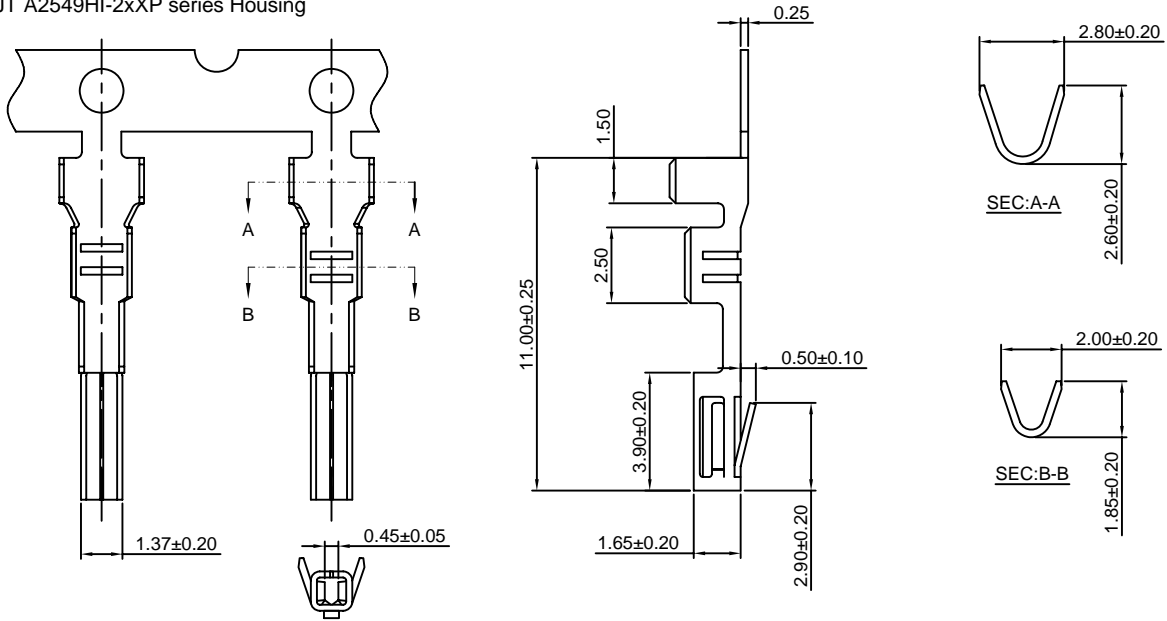
Optional Gold plating available but MOQ requested

**A2549-T-I**

2.54mm Pitch Crimp Terminal

**Reference Informations:**

\*Used in CJT A2549HI-2xXP series Housing



**Ordering information & Specifications:**

Unit:mm

Part NO.	Wire Range	Insulation O.D.	Material	Finish	Qty/reel
A2549-TP-I	AWG#20-#24	1.55mm(max)	Phosphor Bronze	Tin over Nickel	10,000 PCS
A2549-GP-I	AWG#20-#24	1.55mm(max)	Phosphor Bronze	Gold over Nickel	10,000 PCS

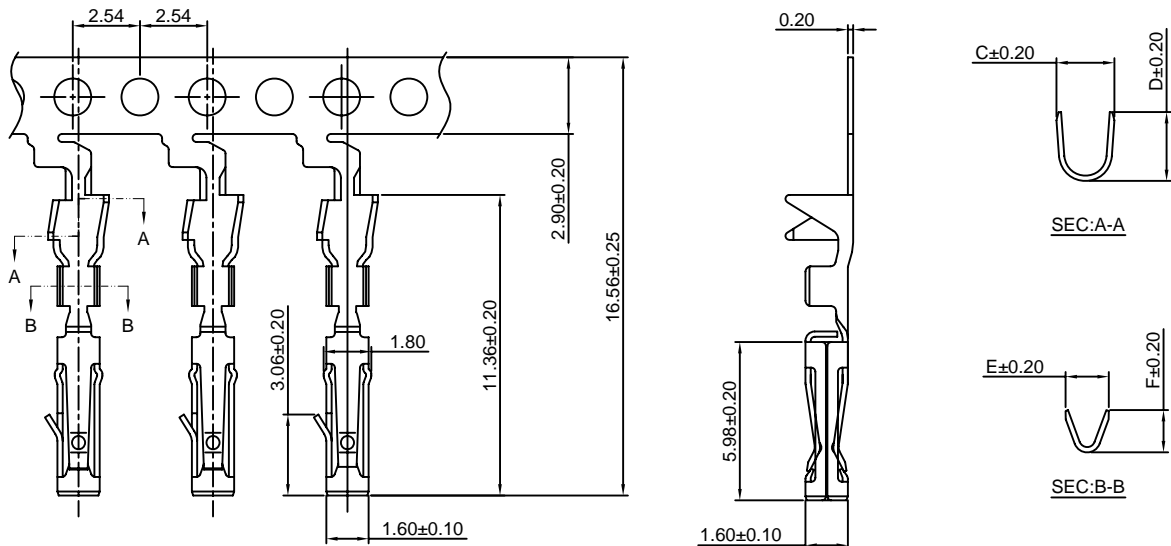
Optional Gold plating available but MOQ requested

**A2549-T-K**

2.54mm Pitch Crimp Terminal

**Reference Informations:**

\*Used in CJT A2549HK-XP,A2549HK-2xXP series Housing



**Ordering information & Specifications:**

Unit:mm

Part NO	Wire Range	Insulation O.D.	Material	Finish	C	D	E	F	Qty/reel
A2549-TP-K	AWG#22-#30	1.50mm(max)	Phosphor Bronze	Tin over Nickel	2.19	2.60	1.64	1.60	15,000 PCS
A2549-GP-K	AWG#22-#30	1.50mm(max)	Phosphor Bronze	Gold over Nickel	2.19	2.60	1.64	1.60	15,000 PCS
A2549-TP-K-H	AWG#20-#22	1.60mm(max)	Phosphor Bronze	Tin over Nickel	2.40	2.20	2.10	2.00	15,000 PCS
A2549-GP-K-H	AWG#20-#22	1.60mm(max)	Phosphor Bronze	Gold over Nickel	2.40	2.20	2.10	2.00	15,000 PCS

Optional Gold plating available but MOQ requested



# A2549 SERIES

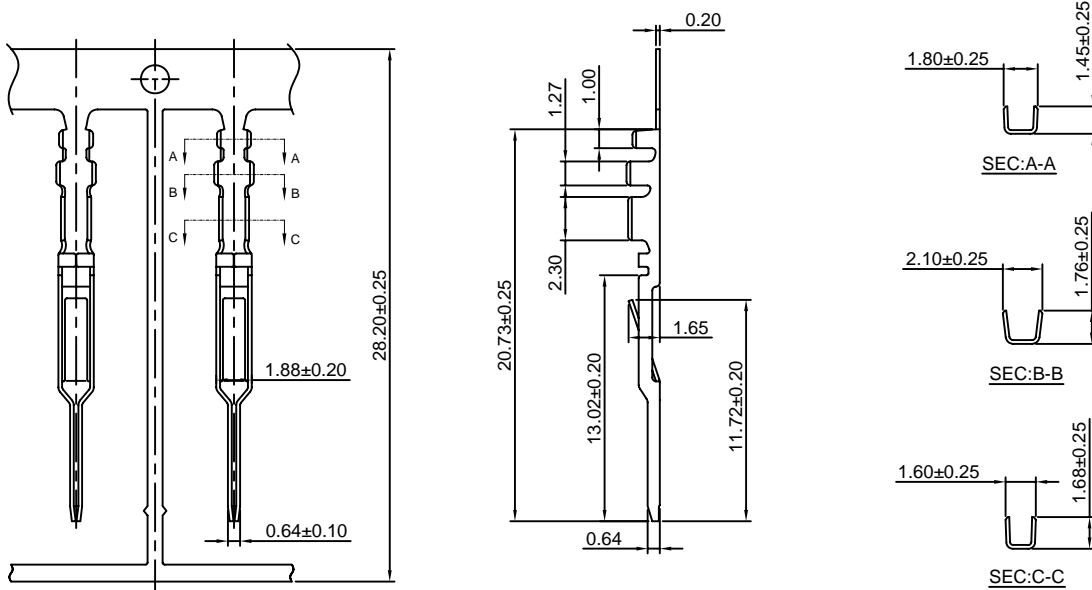
2.54mm pitch wire to board connector

## A2549M-T

2.54mm Pitch Crimp Terminal

**Reference Informations:**

\*Used in CJT A2549HM-XP,A2549HM-2xXP series Housing



Ordering information & Specifications:

Unit:mm

Part NO.	Wire Range	Insulation O.D.	Material	Finish	Qty/reel
A2549M-TP	AWG#22-#26	1.55mm(max)	Phosphor Bronze	Tin over Nickel	10,000 PCS
A2549M-GP	AWG#22-#26	1.55mm(max)	Phosphor Bronze	Gold over Nickel	10,000 PCS

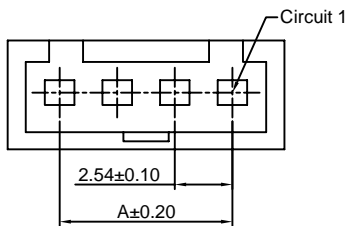
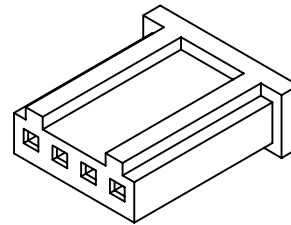
Optional Gold plating available but MOQ requested

## A2549H-XP

2.54mm pitch Housing

**Reference Informations:**

- \*Material:PBT,UL94V-0
- \*Suitable CJT A2547-T-B series Terminal
- \*Mates with CJT A2549HM-XP series Housing or A2549WV,WR-XP,A2547WVE,WRE-XP series Wafer
- \*Color:Black



**Ordering Information:**

A2549H-XP - \*\*\*  
1 2

- 1.Part No.
- 2.Material:  
(Blank):PBT,UL94V-0  
GWT:PBT,UL94V-0,GWT 750°C

**Ordering Information & Dimensions:**

PART NO.	Dimensions		
	A	B	C
2P	2.54	7.10	5.60
3P	5.08	9.64	8.14
4P	7.62	12.18	10.68
5P	10.16	14.72	13.22
6P	12.70	17.26	15.76
7P	15.24	19.80	18.30
8P	17.78	22.34	20.84
9P	20.32	24.88	23.38
10P	22.86	27.42	25.92
11P	25.40	29.96	28.46
12P	27.94	32.50	31.00
13P	30.48	35.04	33.54
14P	33.02	37.58	36.08
15P	35.56	40.12	38.62
16P	38.10	42.66	41.16
17P	40.64	45.20	43.70
18P	43.18	47.74	46.24
19P	45.72	50.28	48.78
20P	48.26	52.82	51.32
21P	50.80	55.36	53.86
22P	53.34	57.90	56.40



Unit: mm



# A2549 SERIES

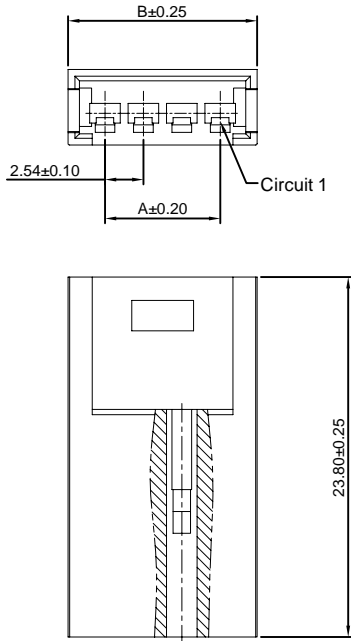
2.54mm pitch wire to board connector

## A2549HM-XP

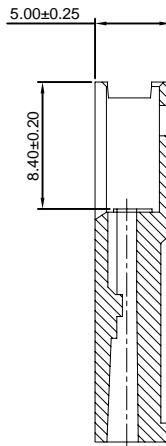
2.54mm pitch Housing

**Reference Informations:**

- \*Material:PBT, UL94V-0
- \*Suitable CJT A2549M-T series Terminal
- \*Mates with CJT A2549H-XP series Housing
- \*Color:Black



Ordering Information:  
 A2549HM-XP - \*\*\*  
 1 2  
 1.Part No.  
 2.Material:  
 (Blank): PBT,UL94V-0  
 GWT: PBT,UL94V-0 GWT 750°C



**Ordering Information & Dimensions:**

PART NO.	Dimensions	
	A	B
2P	2.54	7.42
3P	5.08	9.96
4P	7.62	12.50
5P	10.16	15.04
6P	12.70	17.58
7P	15.24	20.12
8P	17.78	22.66
9P	20.32	25.20
10P	22.86	27.74
11P	25.40	30.28
12P	27.94	32.82
13P	30.48	35.36
14P	33.02	37.90
15P	35.56	40.44
16P	38.10	42.98
17P	40.64	45.52
18P	43.18	48.06
19P	45.72	50.60
20P	48.26	53.14

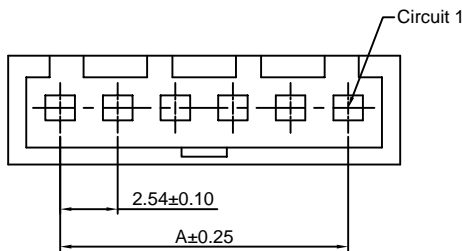
Unit: mm

## A2549HA-XP

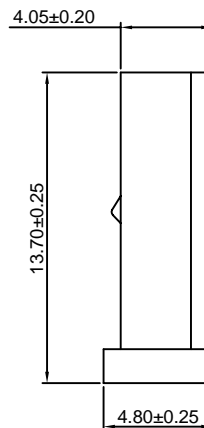
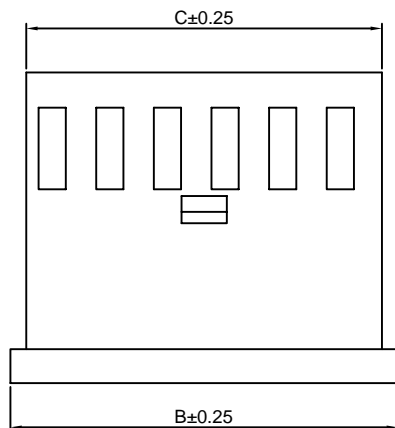
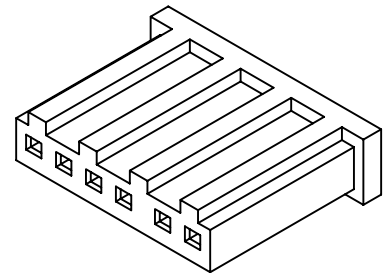
2.54mm pitch Housing

**Reference Informations:**

- \*Material:PBT, UL94V-0
- \*Suitable CJT A2547-T-B series Terminal
- \*Mates with CJT A2549WV,WR-XP,A2547WVE,WRE-XP series Wafer
- \*Color:Black



Ordering Information:  
 A2549HA-XP - \*\*\*  
 1 2  
 1.Part No.  
 2.Material:  
 (Blank): PBT,UL94V-0  
 GWT: PBT,UL94V-0 GWT 750°C



**Ordering Information & Dimensions:**

PART NO.	Dimensions		
	A	B	C
2P	2.54	7.10	5.60
4P	7.62	12.20	10.68
6P	12.70	17.30	15.76
8P	17.78	22.30	20.84
9P	20.32	24.84	23.38
10P	22.86	27.38	25.92
12P	27.94	32.46	31.00
15P	35.56	41.08	38.64
22P	53.34	58.86	56.40

Unit: mm



# A2549 SERIES

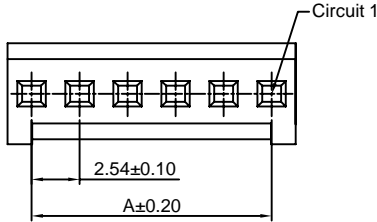
2.54mm pitch wire to board connector

## A2549HB-XP

2.54mm pitch Single Row Housing

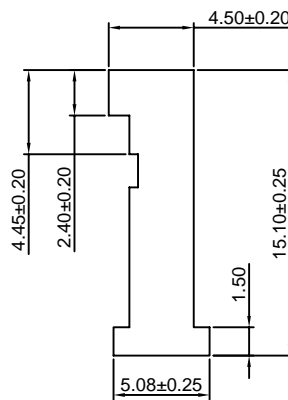
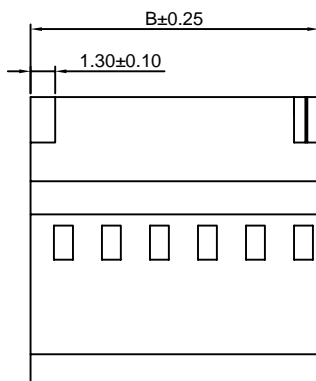
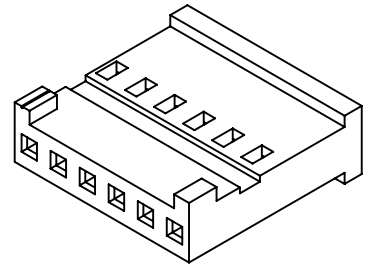
**Reference Informations:**

- \*Material:Nylon 66+15%GF,UL94V-0
- \*Suitable CJT A2549-T-A series Terminal
- \*Mates with CJT A2549WVB,WRB-XP series Wafer
- \*Color:Blue



Ordering Information:  
A2549HB-XP - \*\*\* - \*\*

- 1 2 3
- 1.Part No.
  - 2.Material:  
(blank): Nylon 66,UL94V-0  
GWT: Nylon 66,UL94V-0 GWT 750 °C
  - 3.Color:  
(blank):Blue  
BK:Black



**Ordering Information & Dimensions:**

PART NO.	Dimensions	
	A	B
2P	2.54	5.08
3P	5.08	7.62
4P	7.62	10.16
5P	10.16	12.70
6P	12.70	15.24
7P	15.24	17.78
8P	17.78	20.32
9P	20.32	22.86
10P	22.86	25.40
12P	27.94	30.48
15P	35.56	38.10
18P	43.18	45.72

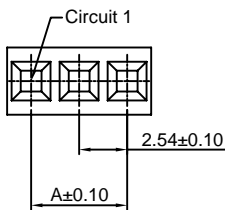
Unit: mm

## A2549HC-XP

2.54mm pitch Single Row Housing

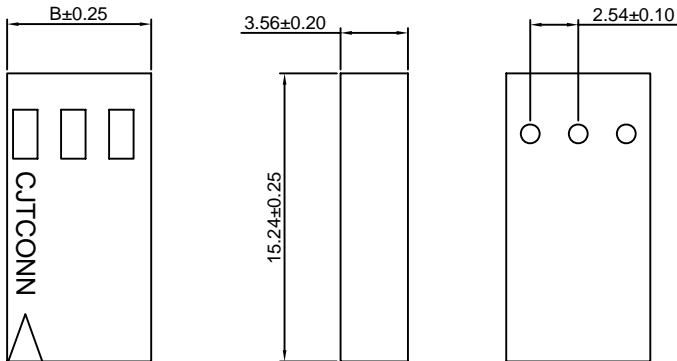
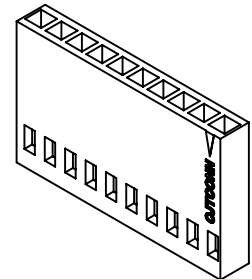
**Reference Informations:**

- \*Material:PBT,UL94V-0
- \*Suitable CJT A2549-T-C series Terminal
- \*Mates with CJT A2541 series Wafer
- \*Color:Black



Ordering Information:  
A2549HC-XP - \*\*\*

- 1 2
- 1.Part No.
  - 2.Material:  
(Blank): PBT,UL94V-0  
GWT: PBT,UL94V-0 GWT 750 °C



**Ordering Information & Dimensions:**

PART NO.	Dimensions		PART NO.	Dimensions	
	A	B		A	B
3P	5.08	7.62	20P	48.26	50.80
4P	7.62	10.16	21P	50.80	53.34
5P	10.16	12.70	22P	53.34	55.88
6P	12.70	15.24	23P	55.88	58.42
7P	15.24	17.78	24P	58.42	60.96
8P	17.78	20.32	25P	60.96	63.50
9P	20.32	22.86	26P	63.50	66.04
10P	22.86	25.40	27P	66.04	68.58
11P	25.40	27.94	28P	68.58	71.12
12P	27.94	30.48	29P	71.12	73.66
13P	30.48	33.02	30P	73.66	76.20
14P	33.02	35.56	31P	76.20	78.74
15P	35.56	38.10	32P	78.74	81.28
16P	38.10	40.64	33P	81.28	83.82
17P	40.64	43.18	34P	83.82	86.36
18P	43.18	45.72	35P	86.36	88.90
19P	45.72	48.26	36P	88.90	91.44

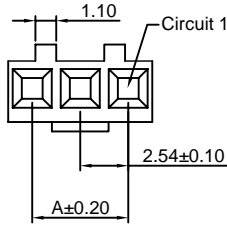
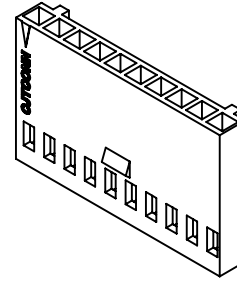
Unit: mm

### A2549HD-XP

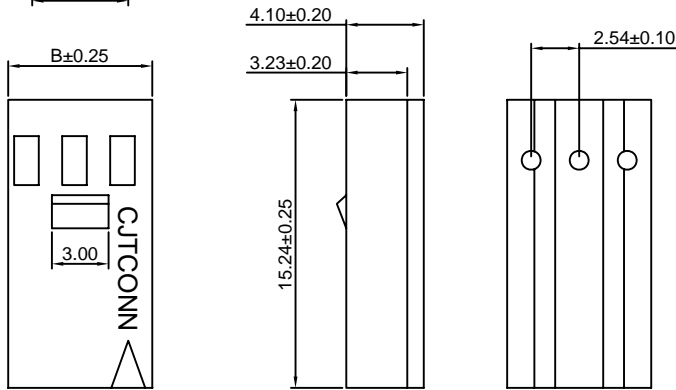
2.54mm pitch Single Row Housing

**Reference Informations:**

- \*Material:PBT,UL94V-0
- \*Suitable CJT A2549-T-C series Terminal
- \*Mates with CJT A2547WVF,WRF-XP series Wafer
- \*Color:Black



Ordering Information:  
**A2549HD-XP - \*\*\***  
 1 2  
 1.Part No.  
 2.Material:  
 (Blank): PBT,UL94V-0  
 GWT: PBT,UL94V-0 GWT 750 °C



**Ordering Information & Dimensions:**

PART NO.	Dimensions		PART NO.	Dimensions	
	A	B		A	B
3P	5.08	7.62	20P	48.26	50.80
4P	7.62	10.16	21P	50.80	53.34
5P	10.16	12.70	22P	53.34	55.88
6P	12.70	15.24	23P	55.88	58.42
7P	15.24	17.78	24P	58.42	60.96
8P	17.78	20.32	25P	60.96	63.50
9P	20.32	22.86	26P	63.50	66.04
10P	22.86	25.40	27P	66.04	68.58
11P	25.40	27.94	28P	68.58	71.12
12P	27.94	30.48	29P	71.12	73.66
13P	30.48	33.02	30P	73.66	76.20
14P	33.02	35.56	31P	76.20	78.74
15P	35.56	38.10	32P	78.74	81.28
16P	38.10	40.64	33P	81.28	83.82
17P	40.64	43.18	34P	83.82	86.36
18P	43.18	45.72	35P	86.36	88.90
19P	45.72	48.26	36P	88.90	91.44

Unit: mm

### A2549HK-XP

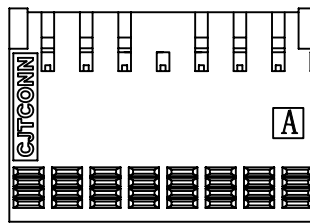
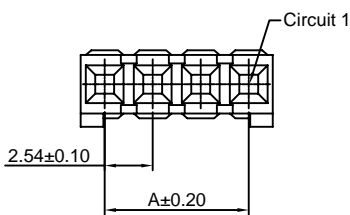
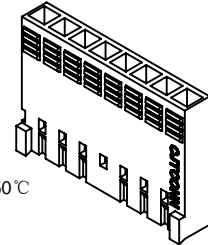
2.54mm pitch Single Row Housing

**Reference Informations:**

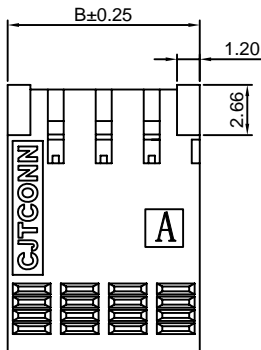
- \*Material:PBT,UL94V-0
- \*Suitable CJT A2549-T-K series Terminal
- \*Mates with CJT A2549WVK,WRK-XP series Wafer
- \*Color:Blue

Ordering Information:  
**A2549HK-XP - \*\*\***  
 1 2

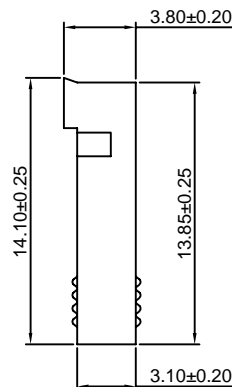
1.Part No.  
 2.Material:  
 (Blank): PBT,UL94V-0  
 GWT: PBT,UL94V-0 GWT 750 °C



8P~36P



2P~7P



**Ordering Information & Dimensions:**

PART NO.	Dimensions		PART NO.	Dimensions	
	A	B		A	B
2P	2.54	5.08	20P	48.26	50.80
3P	5.08	7.62	21P	50.80	53.34
4P	7.62	10.16	22P	53.34	55.88
5P	10.16	12.70	23P	55.88	58.42
6P	12.70	15.24	24P	58.42	60.96
7P	15.24	17.78	25P	60.96	63.50
8P	17.78	20.32	26P	63.50	66.04
9P	20.32	22.86	27P	66.04	68.58
10P	22.86	25.40	28P	68.58	71.12
11P	25.40	27.94	29P	71.12	73.66
12P	27.94	30.48	30P	73.66	76.20
13P	30.48	33.02	31P	76.20	78.74
14P	33.02	35.56	32P	78.74	81.28
15P	35.56	38.10	33P	81.28	83.82
16P	38.10	40.64	34P	83.82	86.36
17P	40.64	43.18	35P	86.36	88.90
18P	43.18	45.72	36P	88.90	91.44
19P	45.72	48.26			

Unit: mm

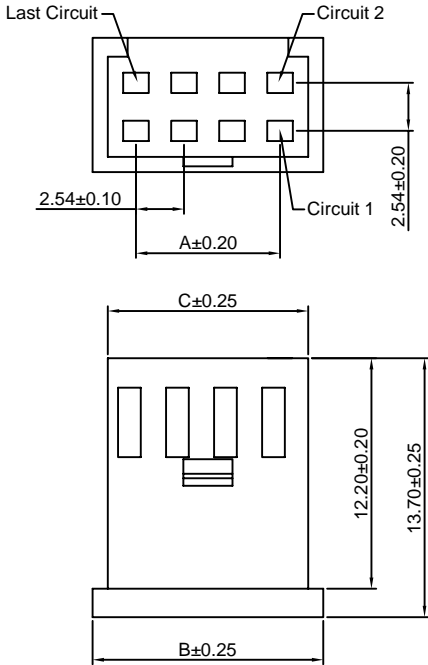
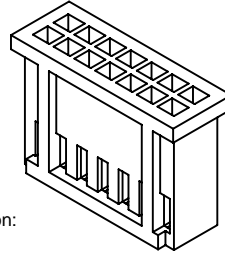


### A2549H-2xXP

2.54mm pitch Dual Row Housing

**Reference Informations:**

- \*Material:PBT,UL94V-0
- \*Suitable CJT A2547-T-B series Terminal
- \*Mates with CJT A2549HM-2xXP series Housing or A2549WV,WR-2xXP series Wafer
- \*Color:Black



Ordering Information:  
A2549H-2xXP - \*\*\*

- 1.Part No.
- 2.Material:  
(Blank): PBT,UL94V-0  
GWT: PBT,UL94V-0 GWT 750°C

**Ordering Information & Dimensions:**

PART NO.	Dimensions		
	A	B	C
2x2P	2.54	7.10	5.60
2x3P	5.08	9.64	8.14
2x4P	7.62	12.18	10.68
2x5P	10.16	14.72	13.22
2x6P	12.70	17.26	15.76
2x7P	15.24	19.80	18.30
2x8P	17.78	22.34	20.84
2x9P	20.32	24.88	23.38
2x10P	22.86	27.42	25.92
2x11P	25.40	29.96	28.46
2x12P	27.94	32.50	31.00
2x13P	30.48	35.04	33.54
2x14P	33.02	37.58	36.08
2x15P	35.56	40.12	38.62
2x16P	38.10	42.66	41.16
2x17P	40.64	45.20	43.70
2x18P	43.18	47.74	46.24
2x19P	45.72	50.28	48.78
2x20P	48.26	52.82	51.32
2x21P	50.80	55.36	53.86
2x22P	53.34	57.90	56.40

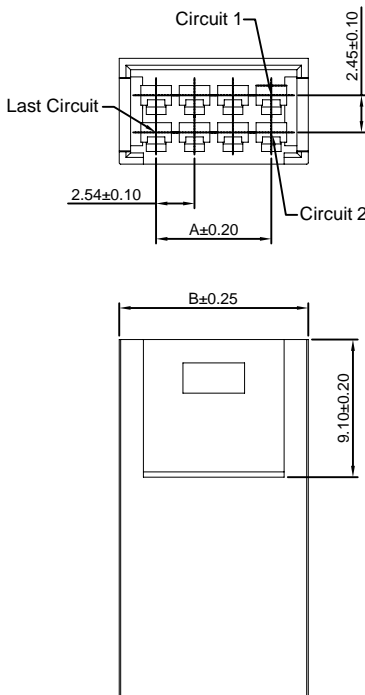
Unit: mm

### A2549HM-2xXP

2.54mm pitch Dual Row Housing

**Reference Informations:**

- \*Material:PBT,UL94V-0
- \*Suitable CJT A2549M-T series Terminal
- \*Mates with CJT A2549H-2xXP series Dual Row Housing
- \*Color:Black



Ordering Information:  
A2549HM-2xXP - \*\*\*

- 1.Part No.
- 2.Material:  
(Blank): PBT,UL94V-0  
GWT: PBT,UL94V-0 GWT 750°C

**Ordering Information & Dimensions:**

PART NO.	Dimensions	
	A	B
2x2P	2.54	7.42
2x3P	5.08	9.96
2x4P	7.62	12.50
2x5P	10.16	15.04
2x6P	12.70	17.58
2x7P	15.24	20.12
2x8P	17.78	22.66
2x9P	20.32	25.20
2x10P	22.86	27.74
2x11P	25.40	30.28
2x12P	27.94	32.82
2x13P	30.48	35.36
2x14P	33.02	37.90
2x15P	35.56	40.44
2x16P	38.10	42.98
2x17P	40.64	45.52
2x18P	43.18	48.06
2x19P	45.72	50.60
2x20P	48.26	53.14

Unit: mm



# A2549 SERIES

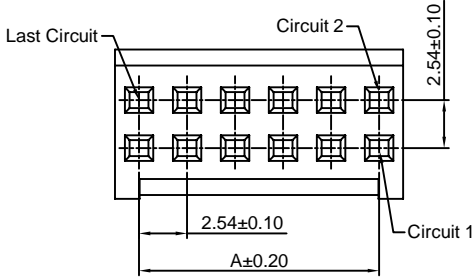
2.54mm pitch wire to board connector

## A2549HB-2xXP

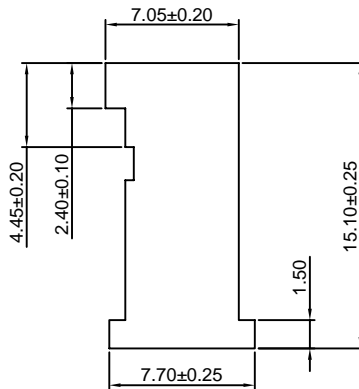
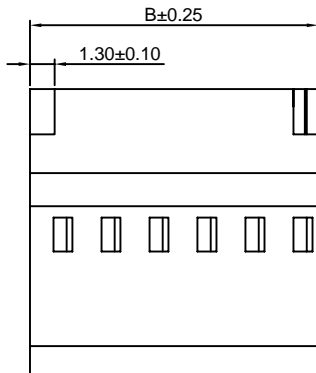
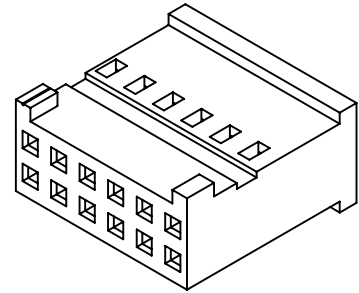
2.54mm pitch Dual Row Housing

**Reference Informations:**

- \*Material:Nylon 66 ,UL94V-0
- \*Suitable CJT A2549-T-A series Terminal
- \*Mates with CJT A2549WVB,WRB-2xXP series Dual Row Wafer
- \*Color:Blue



Ordering Information:  
**A2549HB-2xXP - \*\*\* - \*\***  
 1 2 3  
 1.Part No.  
 2.Material:  
 (blank): Nylon 66,UL94V-0  
 GWT: Nylon 66,UL94V-0,GWT 750 °C  
 3.Color:  
 (blank):Blue  
 BK:Black



**Ordering Information & Dimensions:**

PART NO.	Dimensions	
	A	B
2x3P	5.08	7.62
2x4P	7.62	10.16
2x5P	10.16	12.70
2x6P	12.70	15.24
2x7P	15.24	17.78
2x8P	17.78	20.32
2x9P	20.32	22.86
2x10P	22.86	25.40
2x12P	27.94	30.48
2x15P	35.56	38.10
2x18P	43.18	45.72

Unit: mm

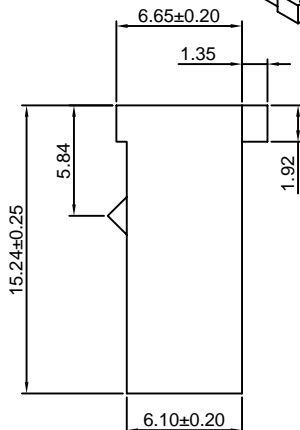
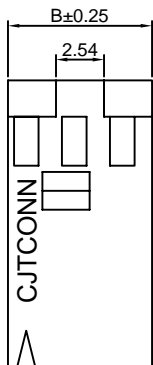
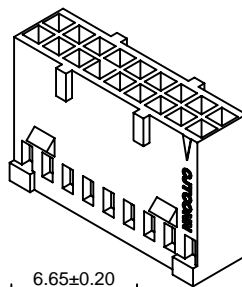
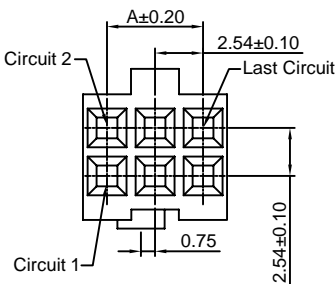
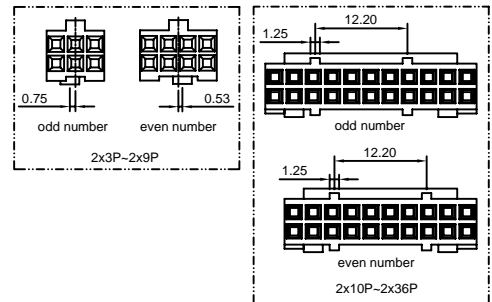
## A2549HC-2xXP

2.54mm pitch Dual Row Housing

**Reference Informations:**

- \*Material:PBT,UL94V-0
- \*Suitable CJT A2549-T-C series Terminal
- \*Color:Black

Ordering Information:  
**A2549HC-2xXP - \*\*\***  
 1 2  
 1.Part No.  
 2.Material:  
 (Blank): PBT,UL94V-0  
 GWT: PBT,UL94V-0 GWT 750 °C



**Ordering Information & Dimensions:**

PART NO.	Dimensions		PART NO.	Dimensions	
	A	B		A	B
2x3P	5.08	7.62	2x20P	48.26	50.80
2x4P	7.62	10.16	2x21P	50.80	53.34
2x5P	10.16	12.70	2x22P	53.34	55.88
2x6P	12.70	15.24	2x23P	55.88	58.42
2x7P	15.24	17.78	2x24P	58.42	60.96
2x8P	17.78	20.32	2x25P	60.96	63.50
2x9P	20.32	22.86	2x26P	63.50	66.04
2x10P	22.86	25.40	2x27P	66.04	68.58
2x11P	25.40	27.94	2x28P	68.58	71.12
2x12P	27.94	30.48	2x29P	71.12	73.66
2x13P	30.48	33.02	2x30P	73.66	76.20
2x14P	33.02	35.56	2x31P	76.20	78.74
2x15P	35.56	38.10	2x32P	78.74	81.28
2x16P	38.10	40.64	2x33P	81.28	83.82
2x17P	40.64	43.18	2x34P	83.82	86.36
2x18P	43.18	45.72	2x35P	86.36	88.90
2x19P	45.72	48.26	2x36P	88.90	91.44

Unit: mm



# A2549 SERIES

2.54mm pitch wire to board connector

## A2549HD-2xXP

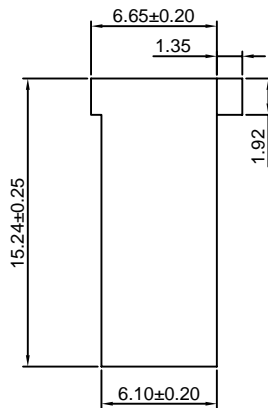
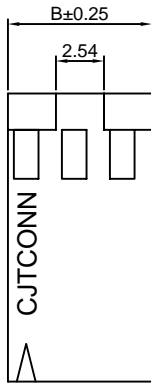
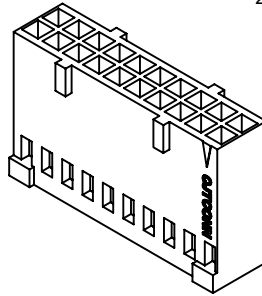
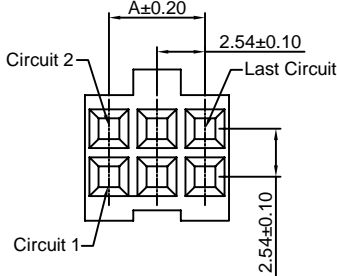
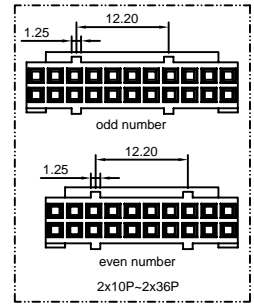
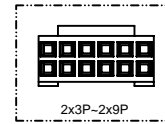
2.54mm pitch Dual Row Housing

**Reference Informations:**

- \*Material:PBT,UL94V-0
- \*Suitable CJT A2549-T-C series Terminal
- \*Color:Black

**Ordering Information:**

- A2549HD-2xXP - \*\*\*  
 1 2  
 1.Part No.  
 2.Material:  
 (Blank): PBT,UL94V-0  
 GWT: PBT,UL94V-0 GWT 750 °C



**Ordering Information & Dimensions:**

PART NO.	Dimensions		PART NO.	Dimensions	
	A	B		A	B
2x3P	5.08	7.62	2x20P	48.26	50.80
2x4P	7.62	10.16	2x21P	50.80	53.34
2x5P	10.16	12.70	2x22P	53.34	55.88
2x6P	12.70	15.24	2x23P	55.88	58.42
2x7P	15.24	17.78	2x24P	58.42	60.96
2x8P	17.78	20.32	2x25P	60.96	63.50
2x9P	20.32	22.86	2x26P	63.50	66.04
2x10P	22.86	25.40	2x27P	66.04	68.58
2x11P	25.40	27.94	2x28P	68.58	71.12
2x12P	27.94	30.48	2x29P	71.12	73.66
2x13P	30.48	33.02	2x30P	73.66	76.20
2x14P	33.02	35.56	2x31P	76.20	78.74
2x15P	35.56	38.10	2x32P	78.74	81.28
2x16P	38.10	40.64	2x33P	81.28	83.82
2x17P	40.64	43.18	2x34P	83.82	86.36
2x18P	43.18	45.72	2x35P	86.36	88.90
2x19P	45.72	48.26	2x36P	88.90	91.44

Unit: mm

## A2549HE-2xXP

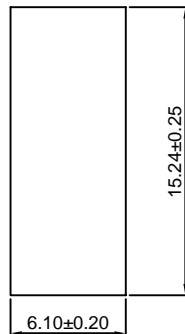
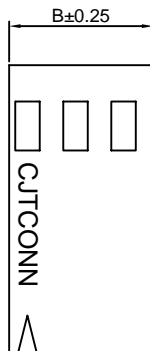
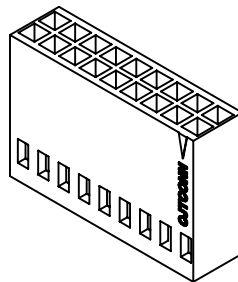
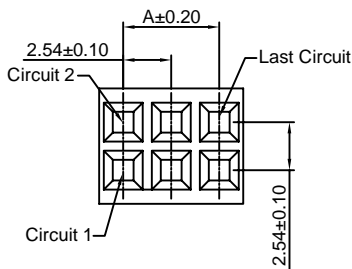
2.54mm pitch Dual Row Housing

**Reference Informations:**

- \*Material:PBT,UL94V-0
- \*Suitable CJT A2549-T-C series Terminal
- \*Mates with CJT A2541 series Wafer
- \*Color:Black

**Ordering Information:**

- A2549HE-2xXP - \*\*\*  
 1 2  
 1.Part No.  
 2.Material:  
 (Blank): PBT,UL94V-0  
 GWT: PBT,UL94V-0 GWT 750 °C



**Ordering Information & Dimensions:**

PART NO.	Dimensions		PART NO.	Dimensions	
	A	B		A	B
2x3P	5.08	7.62	2x20P	48.26	50.80
2x4P	7.62	10.16	2x21P	50.80	53.34
2x5P	10.16	12.70	2x22P	53.34	55.88
2x6P	12.70	15.24	2x23P	55.88	58.42
2x7P	15.24	17.78	2x24P	58.42	60.96
2x8P	17.78	20.32	2x25P	60.96	63.50
2x9P	20.32	22.86	2x26P	63.50	66.04
2x10P	22.86	25.40	2x27P	66.04	68.58
2x11P	25.40	27.94	2x28P	68.58	71.12
2x12P	27.94	30.48	2x29P	71.12	73.66
2x13P	30.48	33.02	2x30P	73.66	76.20
2x14P	33.02	35.56	2x31P	76.20	78.74
2x15P	35.56	38.10	2x32P	78.74	81.28
2x16P	38.10	40.64	2x33P	81.28	83.82
2x17P	40.64	43.18	2x34P	83.82	86.36
2x18P	43.18	45.72	2x35P	86.36	88.90
2x19P	45.72	48.26	2x36P	88.90	91.44

Unit: mm



# A2549 SERIES

2.54mm pitch wire to board connector

## A2549HG-2xXP

2.54mm pitch Dual Row Housing

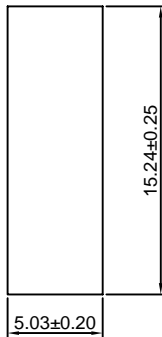
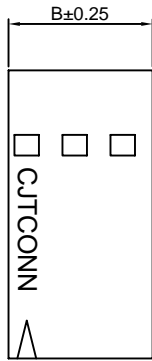
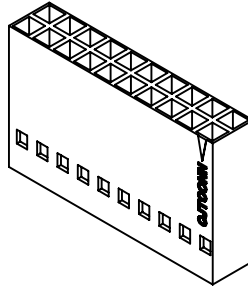
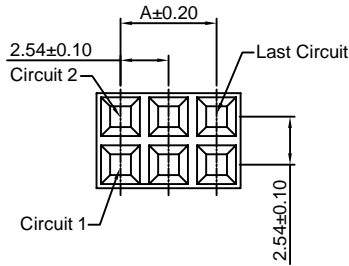
**Reference Informations:**

- \*Material:PBT,UL94V-0
- \*Suitable CJT A2549-T-C series Terminal
- \*Mates with CJT A2541 series Wafer
- \*Color:Black

**Ordering Information:**

A2549HG-2xXP - \*\*\*  
1 2

- 1.Part No.
- 2.Material:  
(Blank): PBT,UL94V-0  
GWT: PBT,UL94V-0 GWT 750 °C



**Ordering Information & Dimensions:**

PART NO.	Dimensions		PART NO.	Dimensions	
	A	B		A	B
2x3P	5.08	7.62	2x20P	48.26	50.80
2x4P	7.62	10.16	2x21P	50.80	53.34
2x5P	10.16	12.70	2x22P	53.34	55.88
2x6P	12.70	15.24	2x23P	55.88	58.42
2x7P	15.24	17.78	2x24P	58.42	60.96
2x8P	17.78	20.32	2x25P	60.96	63.50
2x9P	20.32	22.86	2x26P	63.50	66.04
2x10P	22.86	25.40	2x27P	66.04	68.58
2x11P	25.40	27.94	2x28P	68.58	71.12
2x12P	27.94	30.48	2x29P	71.12	73.66
2x13P	30.48	33.02	2x30P	73.66	76.20
2x14P	33.02	35.56	2x31P	76.20	78.74
2x15P	35.56	38.10	2x32P	78.74	81.28
2x16P	38.10	40.64	2x33P	81.28	83.82
2x17P	40.64	43.18	2x34P	83.82	86.36
2x18P	43.18	45.72	2x35P	86.36	88.90
2x19P	45.72	48.26	2x36P	88.90	91.44

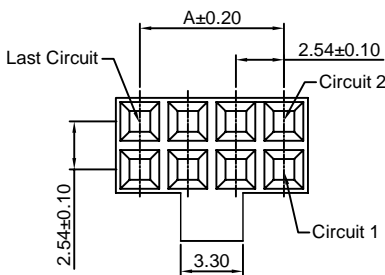
Unit: mm

## A2549HG-N-2xXP

2.54mm pitch Dual Row Housing

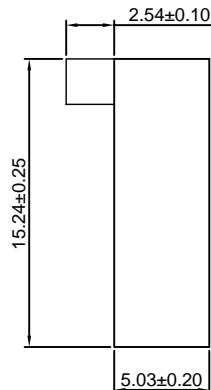
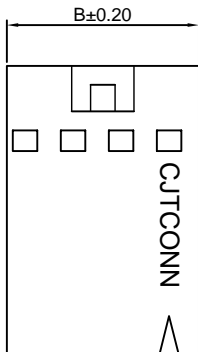
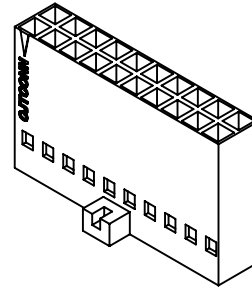
**Reference Informations:**

- \*Material:PBT,UL94V-0
- \*Suitable CJT A2549-T-C series Terminal
- \*Mates with CJT A2547WV-N,WR-N-2xXP series Dual Row Wafer
- \*Color:Black



**Ordering Information:**  
A2549HG-N-2xXP - \*\*\*  
1 2

- 1.Part No.
- 2.Material:  
(Blank): PBT,UL94V-0  
GWT: PBT,UL94V-0 GWT 750 °C



**Ordering Information & Dimensions:**

PART NO.	Dimensions		PART NO.	Dimensions	
	A	B		A	B
2x3P	5.08	7.62	2x20P	48.26	50.80
2x4P	7.62	10.16	2x21P	50.80	53.34
2x5P	10.16	12.70	2x22P	53.34	55.88
2x6P	12.70	15.24	2x23P	55.88	58.42
2x7P	15.24	17.78	2x24P	58.42	60.96
2x8P	17.78	20.32	2x25P	60.96	63.50
2x9P	20.32	22.86	2x26P	63.50	66.04
2x10P	22.86	25.40	2x27P	66.04	68.58
2x11P	25.40	27.94	2x28P	68.58	71.12
2x12P	27.94	30.48	2x29P	71.12	73.66
2x13P	30.48	33.02	2x30P	73.66	76.20
2x14P	33.02	35.56	2x31P	76.20	78.74
2x15P	35.56	38.10	2x32P	78.74	81.28
2x16P	38.10	40.64	2x33P	81.28	83.82
2x17P	40.64	43.18	2x34P	83.82	86.36
2x18P	43.18	45.72	2x35P	86.36	88.90
2x19P	45.72	48.26	2x36P	88.90	91.44

Unit: mm



# A2549 SERIES

2.54mm pitch wire to board connector

## A2549HK-2xXP

2.54mm pitch Dual Row Housing

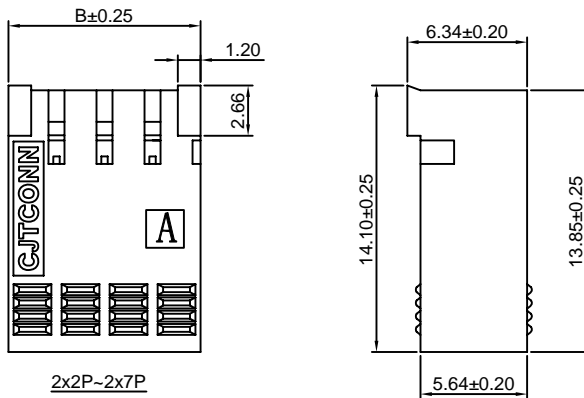
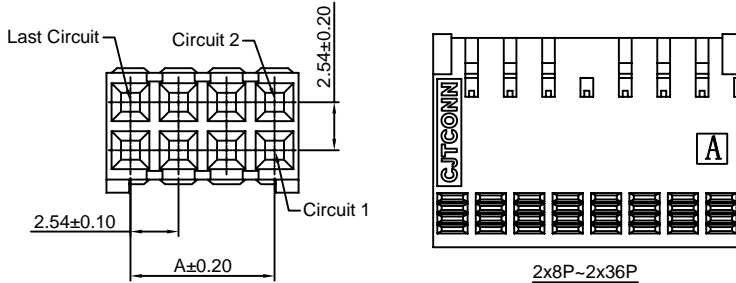
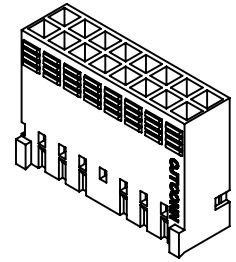
**Reference Informations:**

- \*Material:PBT,UL94V-0
- \*Suitable CJT A2549-T-K series Terminal
- \*Mates with CJT A2549WVK,WRK-2xXP series Wafer
- \*Color:Blue

**Ordering Information:**

A2549HK-2xXP - \*\*\*  
1 2

- 1.Part No.
- 2.Material:  
(Blank): PBT,UL94V-0  
GWT: PBT,UL94V-0 GWT 750°C



**Ordering Information & Dimensions:**

PART NO.	Dimensions		PART NO.	Dimensions	
	A	B		A	B
2x3P	5.08	7.62	2x20P	48.26	50.80
2x4P	7.62	10.16	2x21P	50.80	53.34
2x5P	10.16	12.70	2x22P	53.34	55.88
2x6P	12.70	15.24	2x23P	55.88	58.42
2x7P	15.24	17.78	2x24P	58.42	60.96
2x8P	17.78	20.32	2x25P	60.96	63.50
2x9P	20.32	22.86	2x26P	63.50	66.04
2x10P	22.86	25.40	2x27P	66.04	68.58
2x11P	25.40	27.94	2x28P	68.58	71.12
2x12P	27.94	30.48	2x29P	71.12	73.66
2x13P	30.48	33.02	2x30P	73.66	76.20
2x14P	33.02	35.56	2x31P	76.20	78.74
2x15P	35.56	38.10	2x32P	78.74	81.28
2x16P	38.10	40.64	2x33P	81.28	83.82
2x17P	40.64	43.18	2x34P	83.82	86.36
2x18P	43.18	45.72	2x35P	86.36	88.90
2x19P	45.72	48.26	2x36P	88.90	91.44

Unit: mm

## A2549HI-2xXP

2.54mm pitch Dual Row Housing

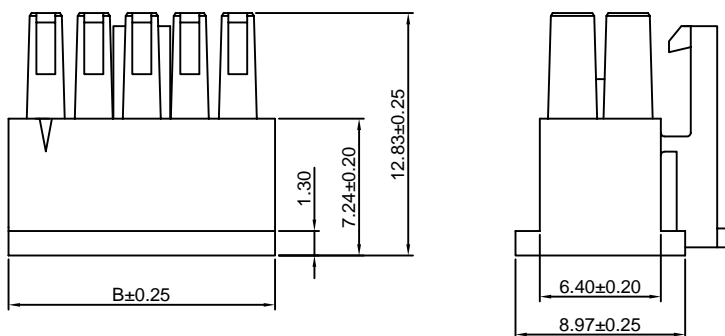
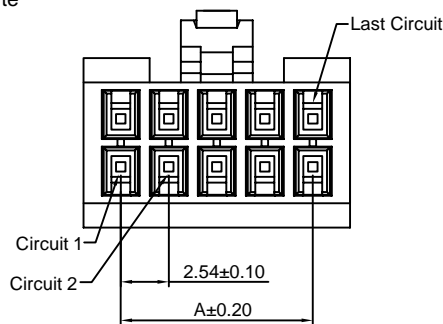
**Reference Informations:**

- \*Material:Nylon 66 , UL94V-0
- \*Suitable CJT A2549-T-I series Terminal
- \*Mates with CJT A2549WVI,WRI-2xXP, A2549WVI-S-2xXP series Dual Row Wafer
- \*Color:White

**Ordering Information:**

A2549HI-2xXP - \*\*\*  
1 2

- 1.Part No.
- 2.Material:  
(Blank):Nylon 66,UL94V-0  
GWT:Nylon 66,UL94V-0,GWT 750°C



**Ordering Information & Dimensions:**

PART NO.	Dimensions	
	A	B
2x2P	2.54	6.48
2x3P	5.08	9.02
2x4P	7.62	11.56
2x5P	10.16	14.10
2x6P	12.70	16.64
2x7P	15.24	19.18
2x8P	17.78	21.72
2x9P	20.32	24.26
2x10P	22.86	26.80
2x11P	25.40	29.34
2x12P	27.94	31.88
2x13P	30.48	34.42
2x14P	33.02	36.96
2x15P	35.56	39.50
2x16P	38.10	42.04
2x17P	40.64	44.58
2x18P	43.18	47.12
2x19P	45.72	49.66
2x20P	48.26	52.20
2x21P	50.80	54.74
2x22P	53.34	57.28
2x23P	55.88	59.82
2x24P	58.42	62.36
2x25P	60.96	64.90

Unit: mm



# A2549 SERIES

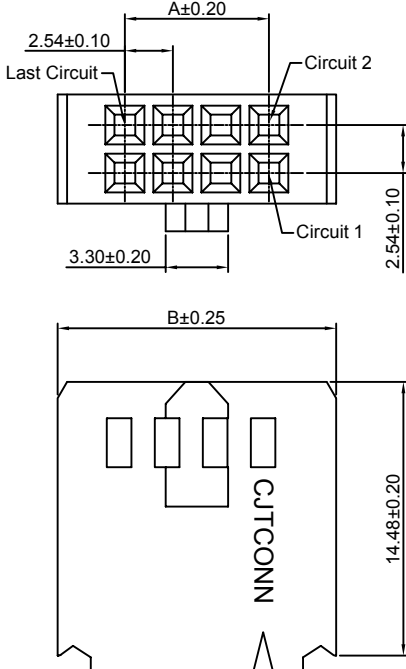
2.54mm pitch wire to board connector

## A2549HL-2xXP

2.54mm pitch Dual Row Housing

**Reference Informations:**

- \*Material:PBT,UL94V-0
- \*Suitable CJT A2549-T-C series Terminal
- \*Mates with CJT A2547WV,WR,WVC,WRC-2xXP series Wafer
- \*Color:Black



Ordering Information:  
A2549HL-2xXP - \*\*\*  
1 2

- 1.Part No.
- 2.Material:  
(Blank):PBT,UL94V-0  
GWT:PBT,UL94V-0,GWT 750°C

**Ordering Information & Dimensions:**

PART NO.	Dimensions		PART NO.	Dimensions	
	A	B		A	B
2x4P	7.62	14.73	2x19P	45.72	52.83
2x5P	10.16	17.27	2x20P	48.26	55.37
2x6P	12.70	19.81	2x21P	50.80	57.91
2x7P	15.24	22.35	2x22P	53.34	60.45
2x8P	17.78	24.89	2x23P	55.88	62.99
2x9P	20.32	27.43	2x24P	58.42	65.53
2x10P	22.86	29.97	2x25P	60.96	68.07
2x11P	25.40	32.51	2x26P	63.50	70.61
2x12P	27.94	35.05	2x27P	66.04	73.15
2x13P	30.48	37.59	2x28P	68.58	75.69
2x14P	33.02	40.13	2x29P	71.12	78.23
2x15P	35.56	42.67	2x30P	73.66	80.77
2x16P	38.10	45.21	2x32P	76.20	83.31
2x17P	40.64	47.75	2x32P	78.74	85.85
2x18P	43.18	50.29			

Unit: mm

## A2549WV-XP

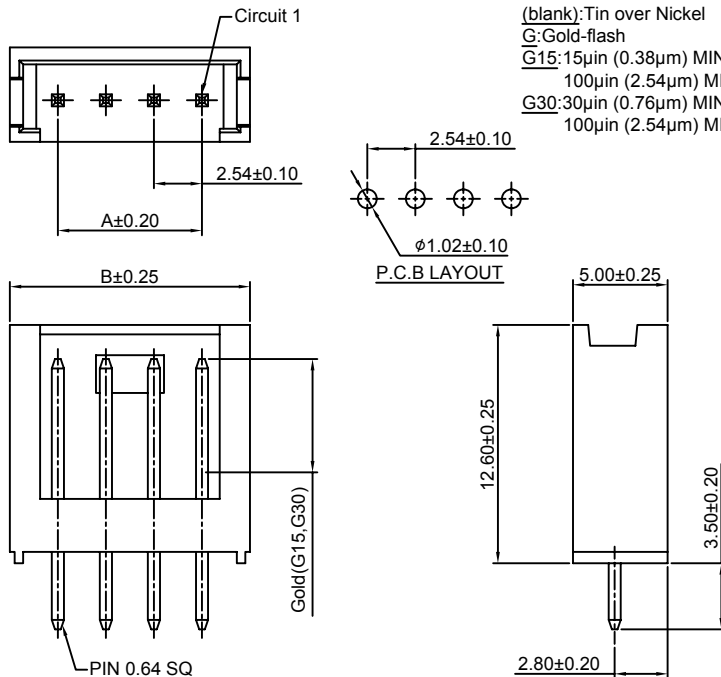
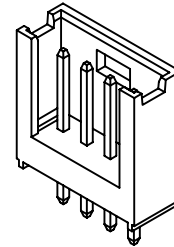
2.54mm pitch 180° Single Row Wafer

**Reference Informations:**

- \*Material:Pin:Brass/Tin over Nickel  
Insulator:PBT,UL94V-0
- \*Mates with CJT A2549H-XP,A2550H-XP-C series Housing
- \*Nylon 6T is available
- \*Color:Black

Ordering Information:  
A2549WV-XP - \*\*\* - \*\*\*  
1 2 3

- 1.Part No.
- 2.Material:  
(Blank):PBT,UL94V-0  
GWT:PBT,UL94V-0,GWT 750°C
- 3.Finish:  
(blank):Tin over Nickel  
G:Gold-flash  
G15:15µm (0.38µm) MIN.Select Gold  
100µm (2.54µm) MIN.Select Tin  
G30:30µm (0.76µm) MIN.Select Gold  
100µm (2.54µm) MIN.Select Tin



**Ordering Information & Dimensions:**

PART NO.	Dimensions	
	A	B
2P	2.54	7.62
3P	5.08	10.16
4P	7.62	12.70
5P	10.16	15.24
6P	12.70	17.78
7P	15.24	20.32
8P	17.78	22.86
9P	20.32	25.40
10P	22.86	27.94
11P	25.40	30.48
12P	27.94	33.02
13P	30.48	35.56
14P	33.02	38.10
15P	35.56	40.64
16P	38.10	43.18
17P	40.64	45.72
18P	43.18	48.26
19P	45.72	50.80
20P	48.26	53.34
21P	50.80	55.88
22P	53.34	58.42

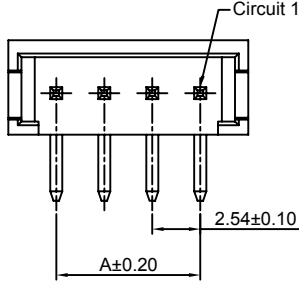
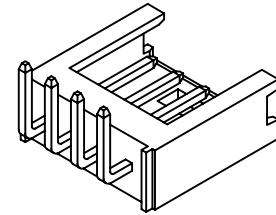
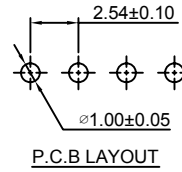
Unit: mm

### A2549WR-XP

2.54mm pitch 90° Single Row Wafer

**Reference Informations:**

- \*Material:Pin:Brass/Tin over Nickel  
Insulator:PBT,UL94V-0
- \*Mates with CJT A2549H-XP,A2550H-XP-C series Housing
- \*Nylon 6T is available
- \*Color:Black



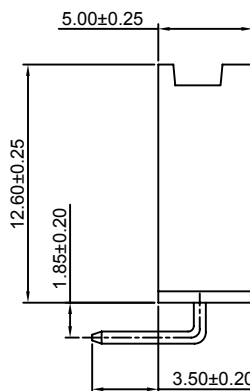
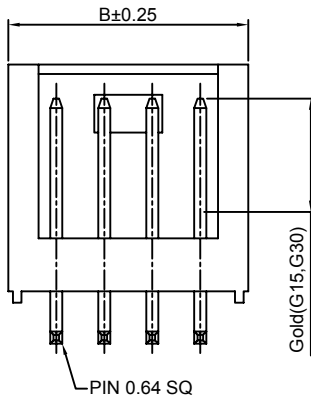
Ordering Information:  
A2549WR-XP - \*\*\* - \*\*\*  
1 2 3

- 1.Part No.
- 2.Material:  
(Blank):PBT,UL94V-0  
GWT:PBT,UL94V-0,GWT 750 °C
- 3.Finish:  
(blank):Tin over Nickel  
G:Gold-flash  
G15:15µin (0.38µm) MIN.Select Gold  
100µin (2.54µm) MIN.Select Tin  
G30:30µin (0.76µm) MIN.Select Gold  
100µin (2.54µm) MIN.Select Tin

Ordering Information & Dimensions:

PART NO.	Dimensions	
	A	B
2P	2.54	7.62
3P	5.08	10.16
4P	7.62	12.70
5P	10.16	15.24
6P	12.70	17.78
7P	15.24	20.32
8P	17.78	22.86
9P	20.32	25.40
10P	22.86	27.94
11P	25.40	30.48
12P	27.94	33.02
13P	30.48	35.56
14P	33.02	38.10
15P	35.56	40.64
16P	38.10	43.18
17P	40.64	45.72
18P	43.18	48.26
19P	45.72	50.80
20P	48.26	53.34
21P	50.80	55.88
22P	53.34	58.42

Unit: mm

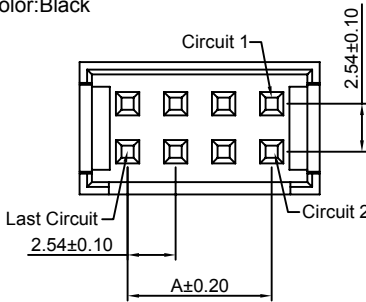
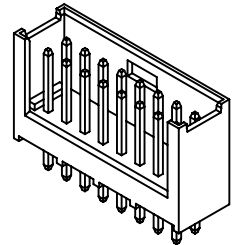
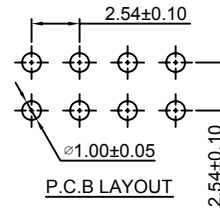


### A2549WV-2xXP

2.54mm pitch 180° Dual Row Wafer

**Reference Informations:**

- \*Material:Pin:Brass/Tin over Nickel  
Insulator:PBT,UL94V-0
- \*Mates with CJT A2549H-2xXP series Housing
- \*Color:Black



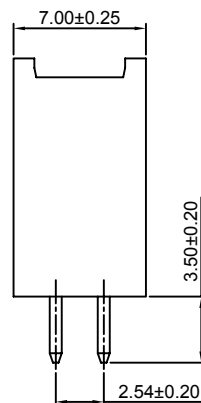
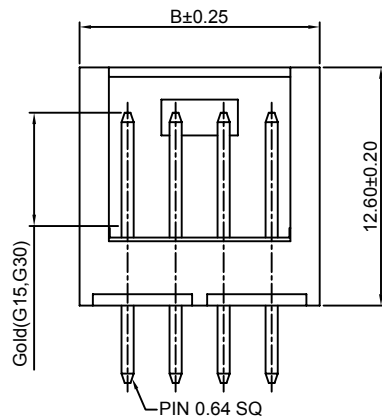
Ordering Information:  
A2549WV-2xXP - \*\*\* - \*\*\*  
1 2 3

- 1.Part No.
- 2.Material:  
(Blank):PBT,UL94V-0  
GWT:PBT,UL94V-0,GWT 750 °C
- 3.Finish:  
(blank):Tin over Nickel  
G:Gold-flash  
G15:15µin (0.38µm) MIN.Select Gold  
100µin (2.54µm) MIN.Select Tin  
G30:30µin (0.76µm) MIN.Select Gold  
100µin (2.54µm) MIN.Select Tin

Ordering Information & Dimensions:

PART NO.	Dimensions	
	A	B
2x2P	2.54	7.62
2x3P	5.08	10.16
2x4P	7.62	12.70
2x5P	10.16	15.24
2x6P	12.70	17.78
2x7P	15.24	20.32
2x8P	17.78	22.86
2x9P	20.32	25.40
2x10P	22.86	27.94
2x11P	25.40	30.48
2x12P	27.94	33.02
2x13P	30.48	35.56
2x14P	33.02	38.10
2x15P	35.56	40.64
2x16P	38.10	43.18
2x17P	40.64	45.72
2x18P	43.18	48.26
2x19P	45.72	50.80
2x20P	48.26	53.34
2x21P	50.80	55.88
2x22P	53.34	58.42

Unit: mm

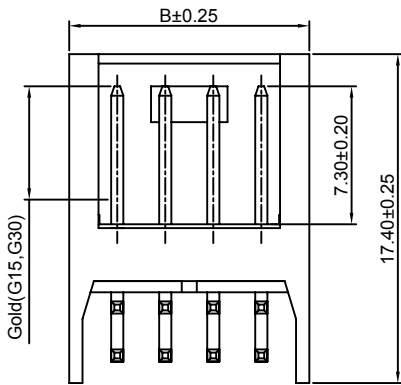
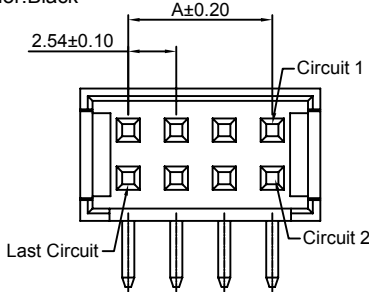


### A2549WR-2xXP

2.54mm pitch 90° Dual Row Wafer

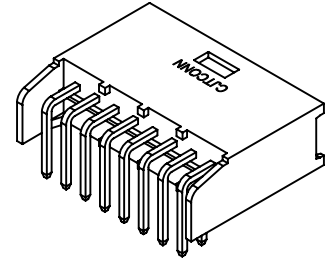
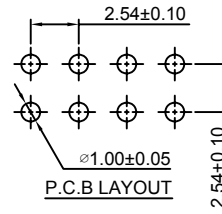
**Reference Informations:**

- \*Material: Pin: Brass/Tin over Nickel  
Insulator: PBT, UL94V-0
- \*Mates with CJT A2549H-2xXP series Housing
- \*Color: Black



Ordering Information:  
A2549WR-2xXP - \*\*\* - \*\*\*

1. Part No.
2. Material:  
(Blank): PBT, UL94V-0  
GWT: PBT, UL94V-0, GWT 750°C
3. Finish:  
(blank): Tin over Nickel  
G: Gold-flash  
G15: 15µin (0.38µm) MIN. Select Gold  
100µin (2.54µm) MIN. Select Tin  
G30: 30µin (0.76µm) MIN. Select Gold  
100µin (2.54µm) MIN. Select Tin



Ordering Information & Dimensions:

PART NO.	Dimensions	
	A	B
2x2P	2.54	7.62
2x3P	5.08	10.16
2x4P	7.62	12.70
2x5P	10.16	15.24
2x6P	12.70	17.78
2x7P	15.24	20.32
2x8P	17.78	22.86
2x9P	20.32	25.40
2x10P	22.86	27.94
2x11P	25.40	30.48
2x12P	27.94	33.02
2x13P	30.48	35.56
2x14P	33.02	38.10
2x15P	35.56	40.64
2x16P	38.10	43.18
2x17P	40.64	45.72
2x18P	43.18	48.26
2x19P	45.72	50.80
2x20P	48.26	53.34
2x21P	50.80	55.88
2x22P	53.34	58.42

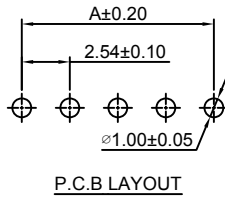
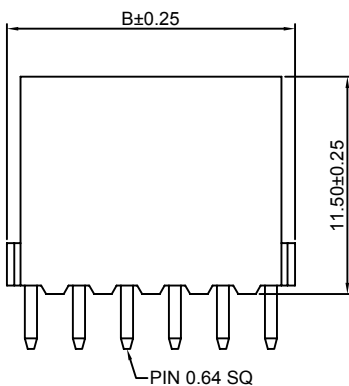
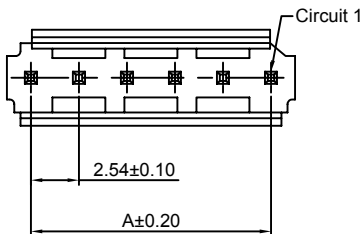
Unit: mm

### A2549WVB-XP

2.54mm pitch 180° Single Row Wafer

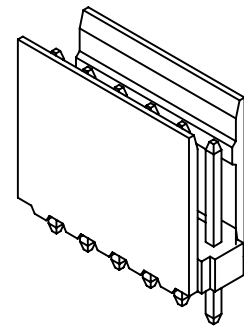
**Reference Informations:**

- \*Material: Pin: Brass/Tin over Nickel  
Insulator: Nylon 66, UL94V-0
- \*Mates with CJT A2549HB-XP, A2550HA-XP series Housing
- \*Color: Blue



Ordering Information:  
A2549WVB-XP - \*\*\* - \*\* - \*\*\*

1. Part No.
2. Material:  
(Blank): Nylon 66, UL94V-0  
GWT: Nylon 66, UL94V-0, GWT 750°C
3. Color:  
(Blank): Blue  
BK: Black
4. Finish:  
(blank): Tin over Nickel  
G: Gold-flash  
G15: 15µin (0.38µm) MIN. Select Gold  
100µin (2.54µm) MIN. Select Tin  
G30: 30µin (0.76µm) MIN. Select Gold  
100µin (2.54µm) MIN. Select Tin



Ordering Information & Dimensions:

PART NO.	Dimensions	
	A	B
2P	2.54	5.08
3P	5.08	7.62
4P	7.62	10.16
5P	10.16	12.70
6P	12.70	15.24
7P	15.24	17.78
8P	17.78	20.32
10P	22.86	25.40
12P	27.94	30.48
15P	35.56	38.10
17P	40.64	43.18
18P	43.18	45.72

Unit: mm



### A2549WRB-XP

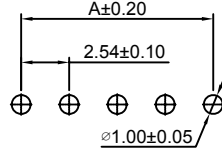
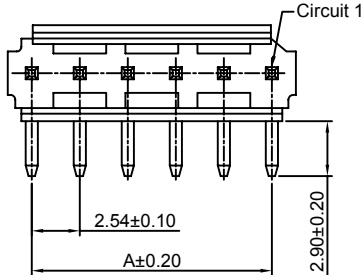
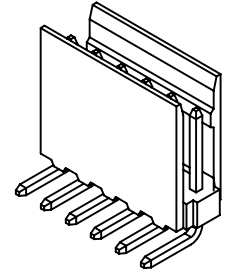
2.54mm pitch 90° Single Row Wafer

**Reference Informations:**

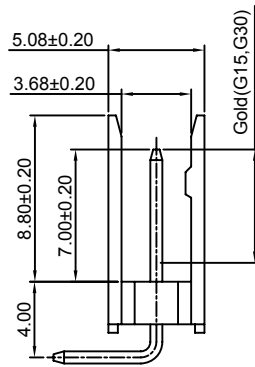
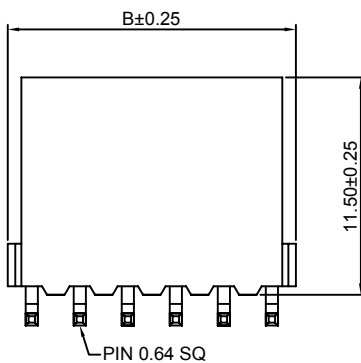
- \*Material:Pin:Brass/Tin over Nickel  
Insulator:Nylon 66,UL94V-0
- \*Mates with CJT A2549HB-XP,A2550HA-XP series Housing
- \*Color:Blue

Ordering Information:  
A2549WRB-XP - \*\*\* - \*\* - \*\*\*  
1 2 3 4

- 1.Part No.
- 2.Material:  
(Blank):Nylon 66,UL94V-0  
GWT:Nylon 66,UL94V-0,GWT 750 °C
- 3.Color:  
(Blank):Blue  
BK:Black
- 4.Finish:  
(blank):Tin over Nickel  
G:Gold-flash  
G15:15µin (0.38µm) MIN.Select Gold  
100µin (2.54µm) MIN.Select Tin  
G30:30µin (0.76µm) MIN.Select Gold  
100µin (2.54µm) MIN.Select Tin



P.C.B LAYOUT



Ordering Information & Dimensions:

PART NO.	Dimensions	
	A	B
2P	2.54	5.08
3P	5.08	7.62
4P	7.62	10.16
5P	10.16	12.70
6P	12.70	15.24
7P	15.24	17.78
8P	17.78	20.32
10P	22.86	25.40
12P	27.94	30.48
15P	35.56	38.10
17P	40.64	43.18
18P	43.18	45.72

Unit: mm

### A2549WRB-S-XP

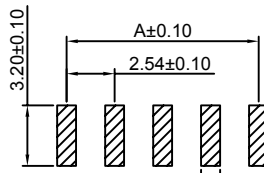
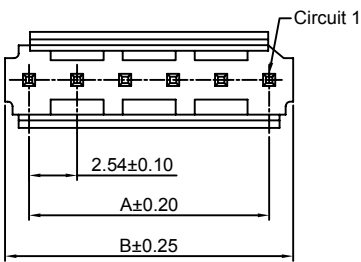
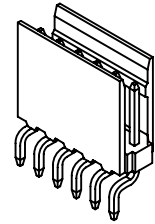
2.54mm pitch 90° Single Row Wafer-SMT TYPE

**Reference Informations:**

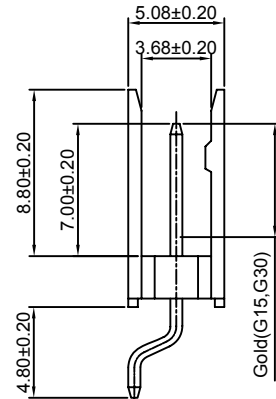
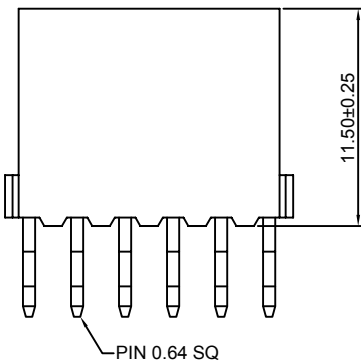
- \*Material:Pin:Brass/Tin over Nickel  
Insulator:Nylon 6T,UL94V-0
- \*Mates with CJT A2549HB-XP,A2550HA-XP series Housing
- \*Color:Blue

Ordering Information:  
A2549WRB-S-XP - \*\*\* - \*\* - \*\*\*  
1 2 3 4

- 1.Part No.
- 2.Material:  
(Blank):Nylon 6T,UL94V-0  
GWT:Nylon 6T,UL94V-0,GWT 750 °C
- 3.Color:  
(Blank):Blue  
BK:Black
- 4.Finish:  
(blank):Tin over Nickel  
G:Gold-flash  
G15:15µin (0.38µm) MIN.Select Gold  
100µin (2.54µm) MIN.Select Tin  
G30:30µin (0.76µm) MIN.Select Gold  
100µin (2.54µm) MIN.Select Tin



P.C.B LAYOUT



Ordering Information & Dimensions:

PART NO.	Dimensions	
	A	B
2P	2.54	5.08
3P	5.08	7.62
4P	7.62	10.16
5P	10.16	12.70
6P	12.70	15.24
7P	15.24	17.78
8P	17.78	20.32
10P	22.86	25.40
12P	27.94	30.48
15P	35.56	38.10
17P	40.64	43.18
18P	43.18	45.72

Unit: mm

### A2549WVB-2xXP

2.54mm pitch 180° Dual Row Wafer

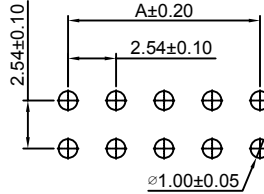
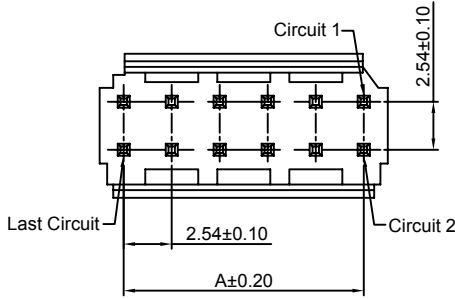
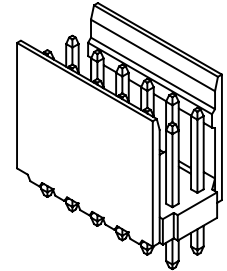
**Reference Informations:**

- \*Material:Pin:Brass/Tin over Nickel  
Insulator:Nylon 66,UL94V-0
- \*Mates with CJT A2549HB-2xXP,A2550HA-2xXP series Housing
- \*Color:Blue

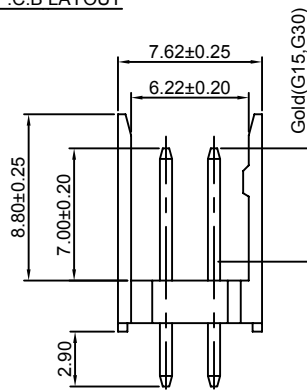
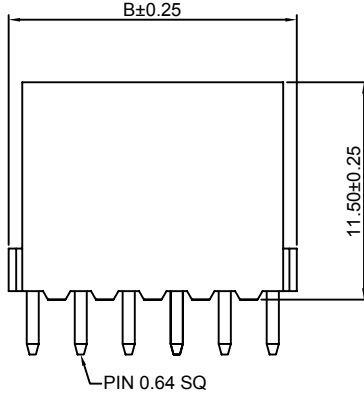
**Ordering Information:**

A2549WVB-2xXP -\*\*\* - \*\* - \*\*\*  
1 2 3 4

- 1.Part No.
- 2.Material:  
(Blank):Nylon 66,UL94V-0  
GWT:Nylon 66,UL94V-0,GWT 750 °C
- 3.Color:  
(Blank):Blue  
BK:Black
- 4.Finish:  
(blank):Tin over Nickel  
G:Gold-flash  
G15:15µin (0.38µm) MIN.Select Gold  
100µin (2.54µm) MIN.Select Tin  
G30:30µin (0.76µm) MIN.Select Gold  
100µin (2.54µm) MIN.Select Tin



P.C.B LAYOUT



**Ordering Information & Dimensions:**

PART NO.	Dimensions	
	A	B
2x2P	2.54	5.08
2x3P	5.08	7.62
2x4P	7.62	10.16
2x5P	10.16	12.70
2x6P	12.70	15.24
2x7P	15.24	17.78
2x8P	17.78	20.32
2x10P	22.86	25.40
2x12P	27.94	30.48
2x15P	35.56	38.10
2x17P	40.64	43.18
2x18P	43.18	45.72

Unit: mm

### A2549WRB-2xXP

2.54mm pitch 90° Dual Row Wafer

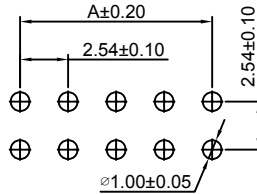
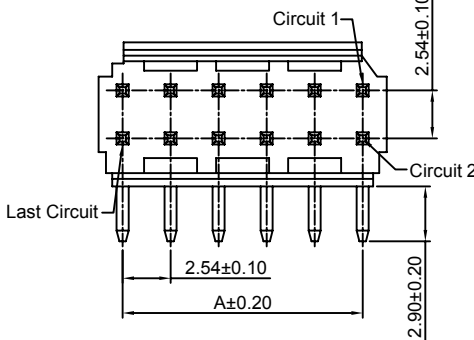
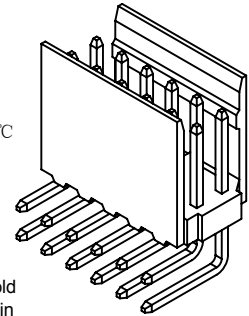
**Reference Informations:**

- \*Material:Pin:Brass/Tin over Nickel  
Insulator:Nylon 66,UL94V-0
- \*Mates with CJT A2549HB-2xXP,A2550HA-2xXP series Housing
- \*Color:Blue

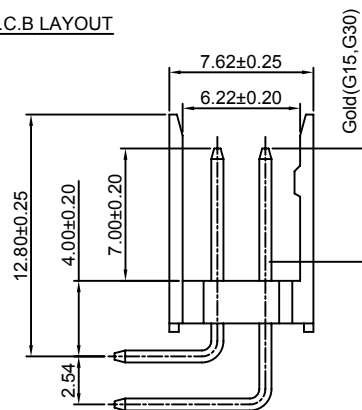
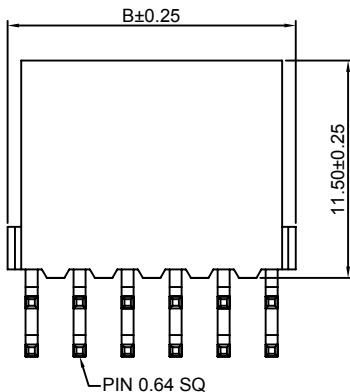
**Ordering Information:**

A2549WRB-2xXP -\*\*\* - \*\* - \*\*\*  
1 2 3 4

- 1.Part No.
- 2.Material:  
(Blank):Nylon 66,UL94V-0  
GWT:Nylon 66,UL94V-0,GWT 750 °C
- 3.Color:  
(Blank):Blue  
BK:Black
- 4.Finish:  
(blank):Tin over Nickel  
G:Gold-flash  
G15:15µin (0.38µm) MIN.Select Gold  
100µin (2.54µm) MIN.Select Tin  
G30:30µin (0.76µm) MIN.Select Gold  
100µin (2.54µm) MIN.Select Tin



P.C.B LAYOUT



**Ordering Information & Dimensions:**

PART NO.	Dimensions	
	A	B
2x2P	2.54	5.08
2x3P	5.08	7.62
2x4P	7.62	10.16
2x5P	10.16	12.70
2x6P	12.70	15.24
2x7P	15.24	17.78
2x8P	17.78	20.32
2x10P	22.86	25.40
2x12P	27.94	30.48
2x15P	35.56	38.10
2x17P	40.64	43.18
2x18P	43.18	45.72

Unit: mm

### A2549WVI-2xXP

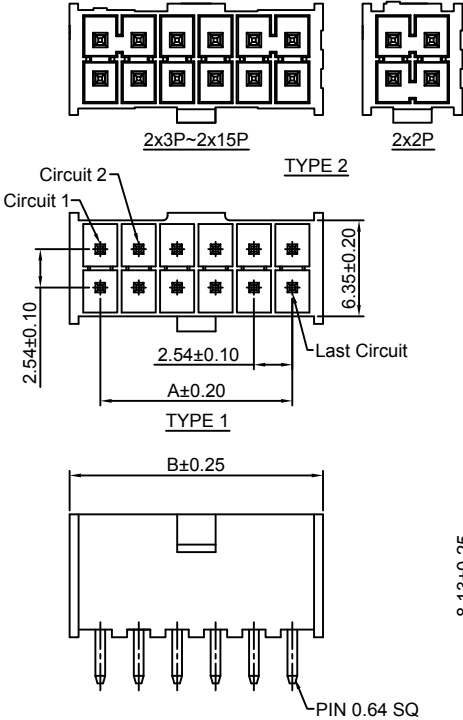
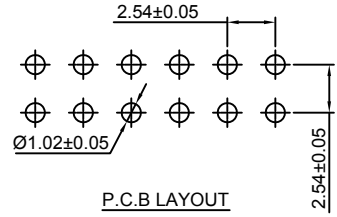
2.54mm pitch 180° Dual Row Wafer

**Reference Informations:**

- \*Material: Pin: Brass/Tin over Nickel  
Insulator: LCP, UL94V-0
- \*Mates with CJT A2549HI-2xXP series Housing
- \*Color: Ivory

Ordering Information:  
A2549WVI-2xXP - \* - \*\*\* - \*\* - \*\*\*  
1 2 3 4 5

1. Part No.
2. Style:  
(Blank): TYPE 1  
K: TYPE 2
3. Material:  
(Blank): LCP, UL94V-0  
GWT: LCP, UL94V-0, GWT 750 °C
4. Color:  
(Blank): Ivory  
BK: Black
5. Finish:  
(blank): Tin over Nickel  
G: Gold-flash  
G10: 10µin (0.25µm) MIN. Select Gold  
100µin (2.54µm) MIN. Select Tin  
G15: 15µin (0.38µm) MIN. Select Gold  
100µin (2.54µm) MIN. Select Tin  
G30: 30µin (0.76µm) MIN. Select Gold  
100µin (2.54µm) MIN. Select Tin



**Ordering Information & Dimensions:**

PART NO.	Dimensions	
	A	B
2x2P	2.54	6.60
2x3P	5.08	9.14
2x4P	7.62	11.68
2x5P	10.16	14.22
2x6P	12.70	16.76
2x7P	15.24	19.30
2x8P	17.78	21.84
2x9P	20.32	24.38
2x10P	22.86	26.92
2x11P	25.40	29.46
2x12P	27.94	32.00
2x13P	30.48	34.54
2x14P	33.02	37.08
2x15P	35.56	39.62

Unit: mm

### A2549WRI-2xXP

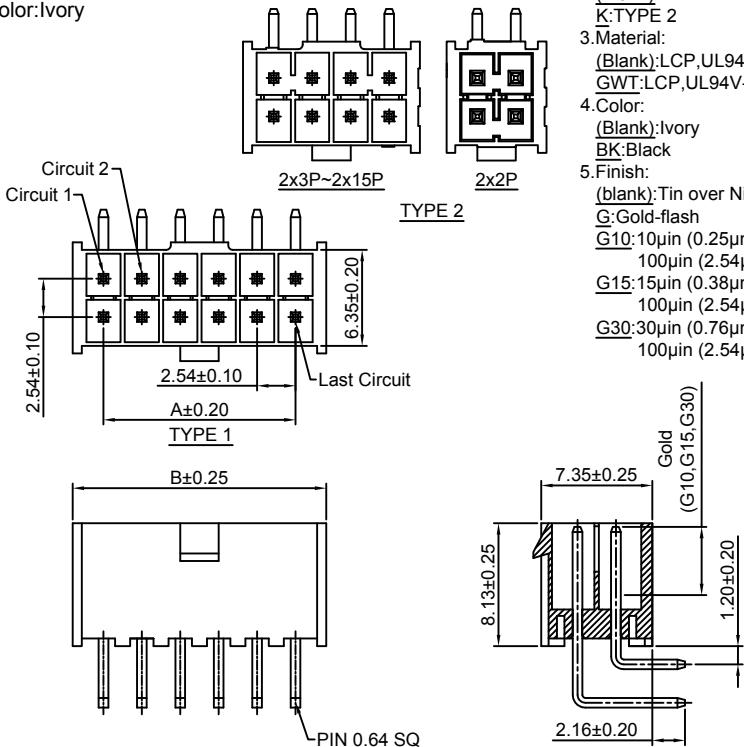
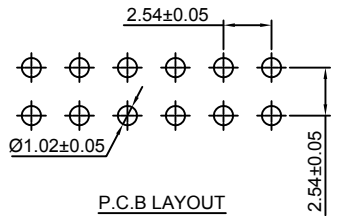
2.54mm pitch 90° Dual Row Wafer

**Reference Informations:**

- \*Material: Pin: Brass/Tin over Nickel  
Insulator: LCP, UL94V-0
- \*Mates with CJT A2549HI-2xXP series Housing
- \*Color: Ivory

Ordering Information:  
A2549WRI-2xXP - \* - \*\*\* - \*\* - \*\*\*  
1 2 3 4 5

1. Part No.
2. Style:  
(Blank): TYPE 1  
K: TYPE 2
3. Material:  
(Blank): LCP, UL94V-0  
GWT: LCP, UL94V-0, GWT 750 °C
4. Color:  
(Blank): Ivory  
BK: Black
5. Finish:  
(blank): Tin over Nickel  
G: Gold-flash  
G10: 10µin (0.25µm) MIN. Select Gold  
100µin (2.54µm) MIN. Select Tin  
G15: 15µin (0.38µm) MIN. Select Gold  
100µin (2.54µm) MIN. Select Tin  
G30: 30µin (0.76µm) MIN. Select Gold  
100µin (2.54µm) MIN. Select Tin



**Ordering Information & Dimensions:**

PART NO.	Dimensions	
	A	B
2x2P	2.54	6.60
2x3P	5.08	9.14
2x4P	7.62	11.68
2x5P	10.16	14.22
2x6P	12.70	16.76
2x7P	15.24	19.30
2x8P	17.78	21.84
2x9P	20.32	24.38
2x10P	22.86	26.92
2x11P	25.40	29.46
2x12P	27.94	32.00
2x13P	30.48	34.54
2x14P	33.02	37.08
2x15P	35.56	39.62

Unit: mm



# A2549 SERIES

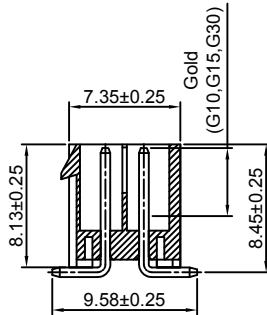
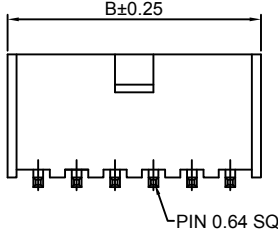
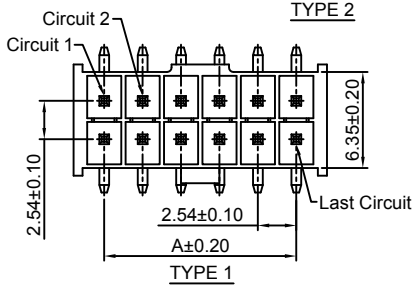
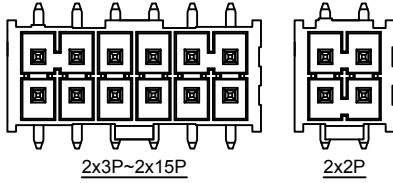
2.54mm pitch wire to board connector

## A2549WVI-S-2xXP

2.54mm pitch 180° Dual Row Wafer - SMT TYPE

### Reference Informations:

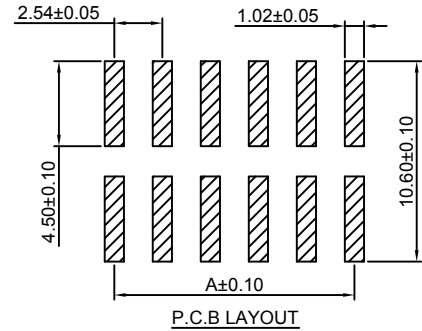
- \*Material: Pin: Brass/Tin over Nickel  
Insulator: LCP, UL94V-0
- \*Mates with CJT A2549HI-2xXP series Housing
- \*Color: Ivory



### Ordering Information:

A2549WVI-S-2xXP - \* - \*\*\* - \*\* - \*\*\*  
1 2 3 4 5

1. Part No.
2. Style:  
(Blank): TYPE 1  
K: TYPE 2
3. Material:  
(Blank): LCP, UL94V-0  
GWT: LCP, UL94V-0, GWT 750 °C
4. Color:  
(Blank): Ivory  
BK: Black
5. Finish:  
(blank): Tin over Nickel  
G: Gold-flash  
G10: 10µm (0.25µm) MIN. Select Gold  
100µm (2.54µm) MIN. Select Tin  
G15: 15µm (0.38µm) MIN. Select Gold  
100µm (2.54µm) MIN. Select Tin  
G30: 30µm (0.76µm) MIN. Select Gold  
100µm (2.54µm) MIN. Select Tin



### Ordering Information & Dimensions:

PART NO.	Dimensions	
	A	B
2x2P	2.54	6.60
2x3P	5.08	9.14
2x4P	7.62	11.68
2x5P	10.16	14.22
2x6P	12.70	16.76
2x7P	15.24	19.30
2x8P	17.78	21.84
2x9P	20.32	24.38
2x10P	22.86	26.92
2x11P	25.40	29.46
2x12P	27.94	32.00
2x13P	30.48	34.54
2x14P	33.02	37.08
2x15P	35.56	39.62

Unit: mm