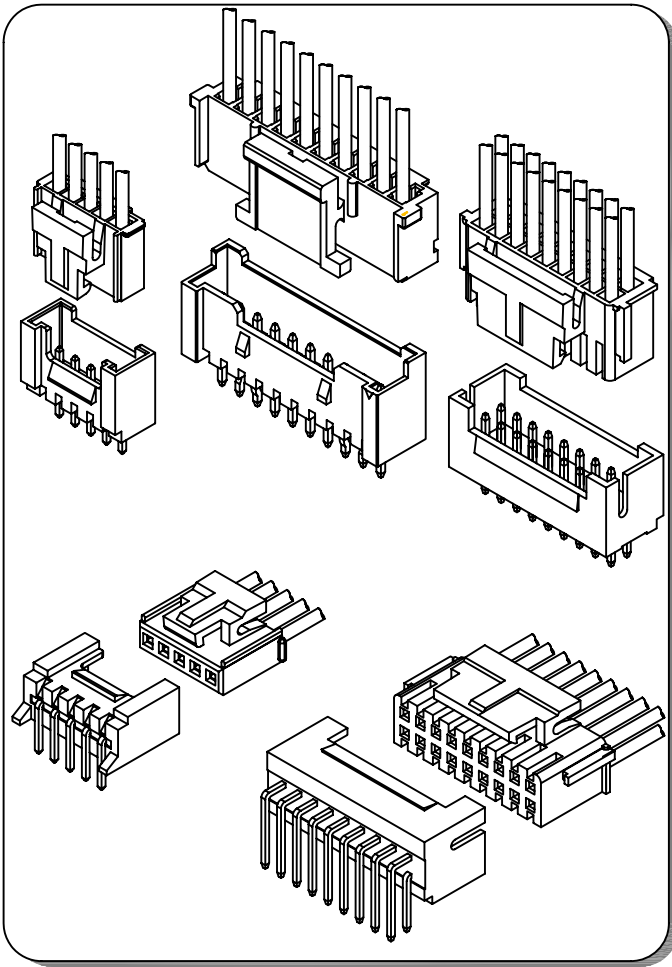


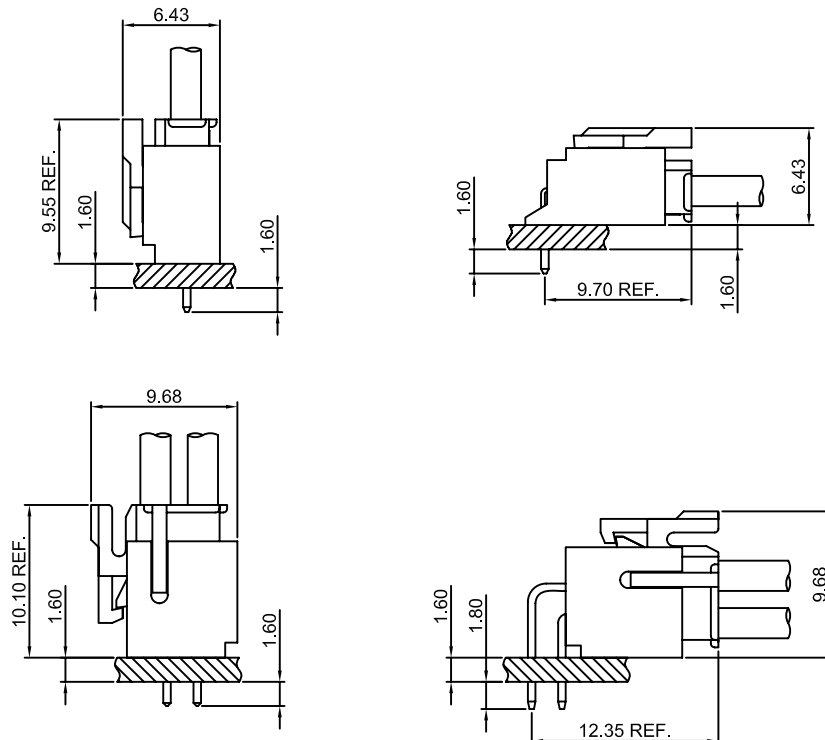
Specifications

- Current rating:3A AC,DC
- Voltage rating:250V AC,DC
- Temperature range:-40°C~+105°C
- Contact resistance:30mΩMax.
- Insulation resistance:1000MΩMin.
- Withstanding voltage:1000V AC/minute
- *Compliant with RoHS and REACH*
- *Meet the HF/Halogen Free,need to customize*
- *Contact CJT for details*

Standards



Assembly layout



CJTconn A2008 SERIES

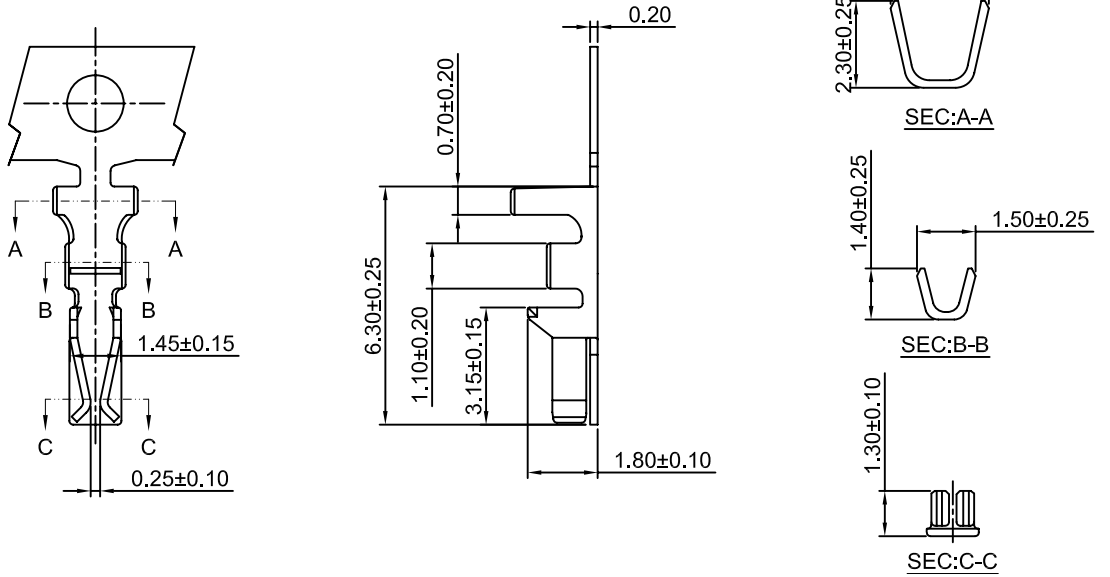
2.00mm pitch wire to board connector

A2008-T

2.00mm pitch Single Row Crimp Terminal

Reference Informations:

*Used in CJT A2008 series Single Row Housing



Ordering information & Specifications:

Unit:mm

| Part NO. | Wire Range | Insulation O.D. | Material | Finish | Qty/reel |
|----------|------------|-----------------|-----------------|------------------|------------|
| A2008-TP | AWG#22-#30 | 1.45mm(max) | Phosphor Bronze | Tin over Nickel | 10,000 PCS |
| A2008-GP | AWG#22-#30 | 1.45mm(max) | Phosphor Bronze | Gold over Nickel | 10,000 PCS |

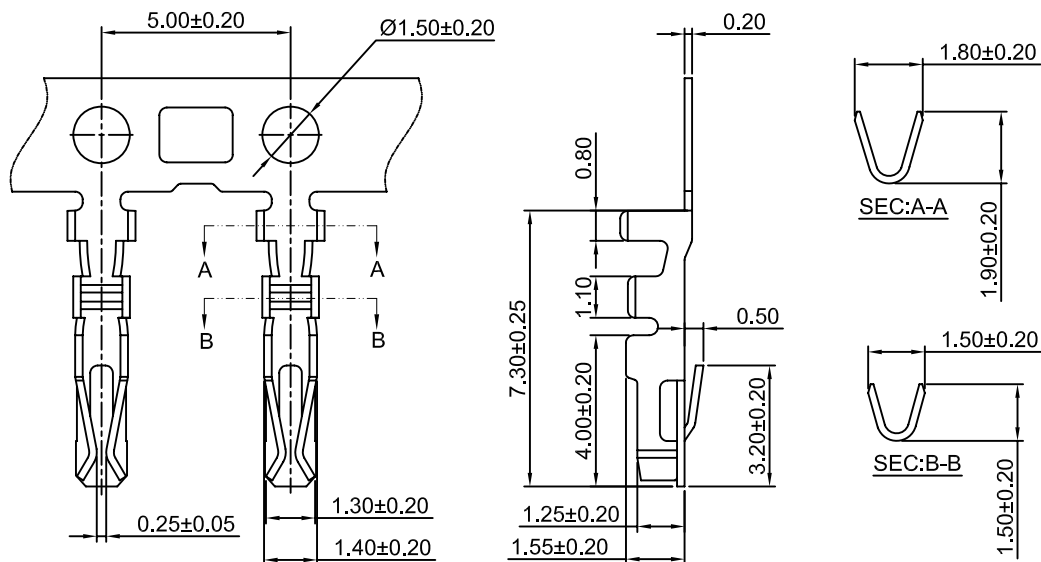
Optional Gold plating available but MOQ requested

A2008-T-A

2.00mm pitch Dual Row Crimp Terminal

Reference Informations:

*Used in CJT A2008 series Dual Row Housing



Ordering information & Specifications:

Unit:mm

| Part NO. | Wire Range | Insulation O.D. | Material | Finish | Qty/reel |
|------------|------------|-----------------|-----------------|------------------|------------|
| A2008-TP-A | AWG#22-#30 | 1.45mm(max) | Phosphor Bronze | Tin over Nickel | 10,000 PCS |
| A2008-GP-A | AWG#22-#30 | 1.45mm(max) | Phosphor Bronze | Gold over Nickel | 10,000 PCS |

Optional Gold plating available but MOQ requested

CJTconn A2008 SERIES

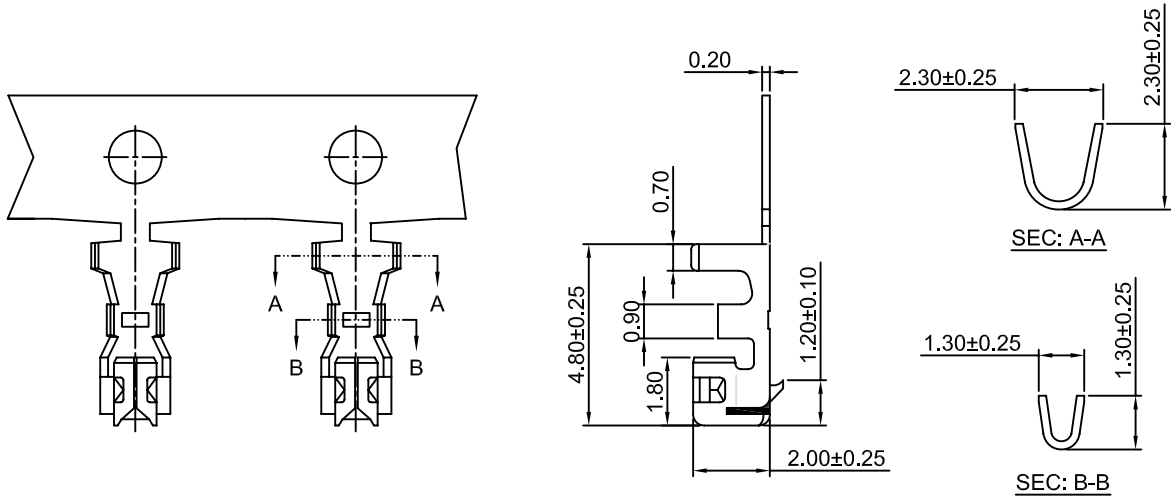
2.00mm pitch wire to board connector

A2008-T-B

2.00mm pitch Single Row Crimp Terminal

Reference Informations:

*Used in CJT A2008HA series Single Row Housing



Ordering information & Specifications:

Unit:mm

| Part NO. | Wire Range | Insulation O.D. | Material | Finish | Qty/reel |
|------------|------------|-----------------|-----------------|------------------|------------|
| A2008-TP-B | AWG#24-#30 | 1.40mm(max) | Phosphor Bronze | Tin over Nickel | 10,000 PCS |
| A2008-GP-B | AWG#24-#30 | 1.40mm(max) | Phosphor Bronze | Gold over Nickel | 10,000 PCS |

Optional Gold plating available but MOQ requested

A2008H-XP

2.00mm pitch Housing

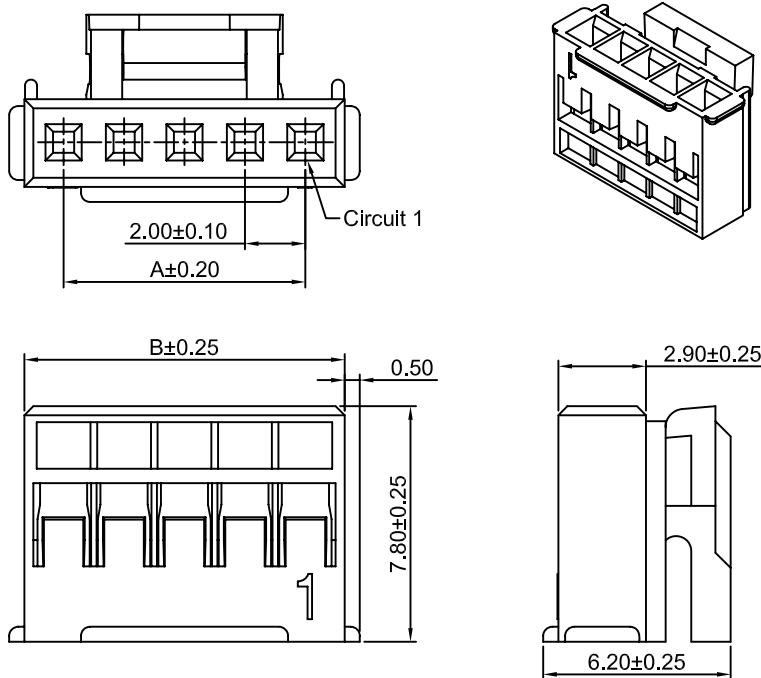
Reference Informations:

*Material:Nylon 66,UL94V-0

*Suitable CJT A2008 series Terminal

*Mates with CJT A2008 series Single Row Wafer

*Color:White



Ordering Information & Dimensions:

| PART NO. | Dimensions | |
|----------|------------|-------|
| | A | B |
| 3P | 4.00 | 6.70 |
| 4P | 6.00 | 8.70 |
| 5P | 8.00 | 10.70 |
| 6P | 10.00 | 12.70 |
| 7P | 12.00 | 14.70 |
| 8P | 14.00 | 16.70 |
| 9P | 16.00 | 18.70 |
| 10P | 18.00 | 20.70 |
| 11P | 20.00 | 22.70 |
| 12P | 22.00 | 24.70 |
| 13P | 24.00 | 26.70 |
| 14P | 26.00 | 28.70 |
| 15P | 28.00 | 30.70 |
| 16P | 30.00 | 32.70 |

Unit: mm

CJT_{conn} A2008 SERIES

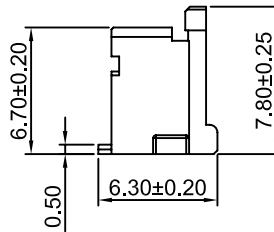
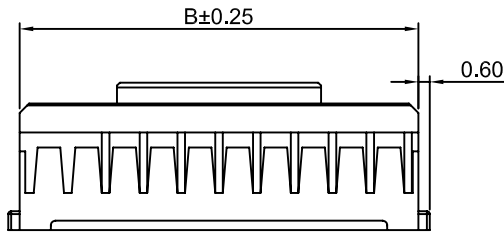
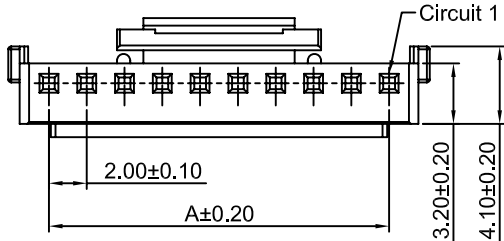
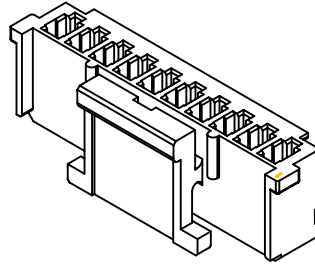
2.00mm pitch wire to board connector

A2008HA-XP

2.00mm pitch Housing

Reference Informations:

- *Material:Nylon 66,UL94V-0
- *Suitable CJT A2008-T-B series Terminal
- *Mates with CJT A2008WVA series Wafer
- *Color:Ivory



Ordering Information & Dimensions:

| PART NO. | Dimensions | |
|----------|------------|-------|
| | A | B |
| 4P | 6.00 | 9.10 |
| 5P | 8.00 | 11.10 |
| 6P | 10.00 | 13.10 |
| 7P | 12.00 | 15.10 |
| 8P | 14.00 | 17.10 |
| 9P | 16.00 | 19.10 |
| 10P | 18.00 | 21.10 |
| 11P | 20.00 | 23.10 |
| 12P | 22.00 | 25.10 |
| 13P | 24.00 | 27.10 |
| 14P | 26.00 | 29.10 |
| 15P | 28.00 | 31.10 |
| 16P | 30.00 | 33.10 |
| 17P | 32.00 | 35.10 |
| 18P | 34.00 | 37.10 |
| 19P | 36.00 | 39.10 |
| 20P | 38.00 | 41.10 |

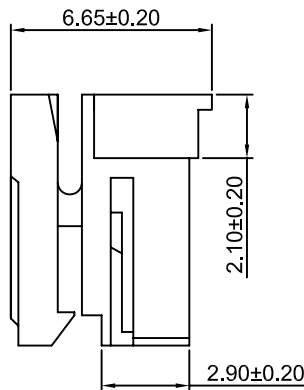
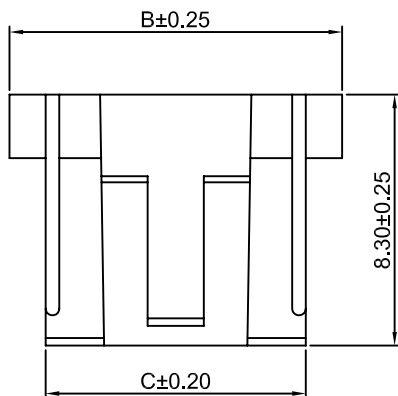
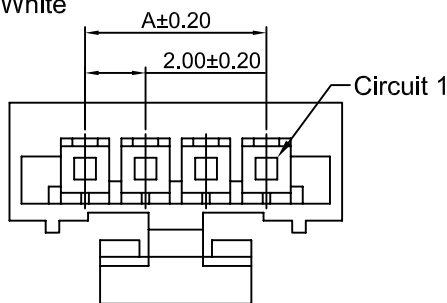
Unit: mm

A2008HB-XP

2.00mm pitch Housing

Reference Informations:

- *Material:Nylon 66,UL94V-0
- *Suitable CJT A2008-T-A series Terminal
- *Mates with CJT A2008 series Single Row Wafer
- *Color:White



Ordering Information & Dimensions:

| PART NO. | Dimensions | | |
|----------|------------|-------|-------|
| | A | B | C |
| 2P | 2.00 | 7.00 | 4.60 |
| 3P | 4.00 | 9.00 | 6.60 |
| 4P | 6.00 | 11.00 | 8.60 |
| 5P | 8.00 | 13.00 | 10.60 |
| 6P | 10.00 | 15.00 | 12.60 |
| 7P | 12.00 | 17.00 | 14.60 |
| 8P | 14.00 | 19.00 | 16.60 |
| 9P | 16.00 | 21.00 | 18.60 |
| 10P | 18.00 | 23.00 | 20.60 |
| 11P | 20.00 | 25.00 | 22.60 |
| 12P | 22.00 | 27.00 | 24.60 |
| 13P | 24.00 | 29.00 | 26.60 |
| 14P | 26.00 | 31.00 | 28.60 |
| 15P | 28.00 | 33.00 | 30.60 |

Unit: mm

CJTconn A2008 SERIES

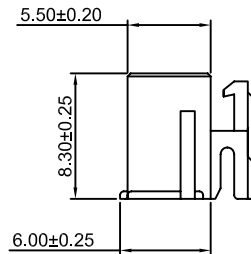
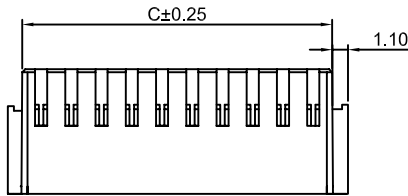
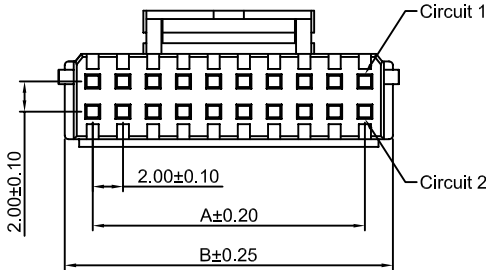
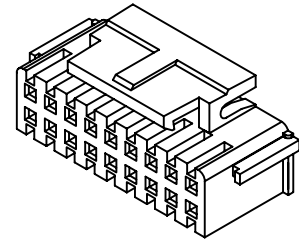
2.00mm pitch wire to board connector

A2008H-2xXP

2.00mm pitch Dual Row Housing

Reference Informations:

- *Material:Nylon 66,UL94V-0
- *Suitable CJT A2008-T-A series Terminal
- *Mates with CJT A2008 series Dual Row Wafer
- *Color:White



Ordering Information & Dimensions:

| PART NO. | Dimensions | | |
|----------|------------|-------|-------|
| | A | B | C |
| 2x3P | 4.00 | 7.70 | 6.70 |
| 2x4P | 6.00 | 9.70 | 8.70 |
| 2x5P | 8.00 | 11.70 | 10.70 |
| 2x6P | 10.00 | 13.70 | 12.70 |
| 2x7P | 12.00 | 15.70 | 14.70 |
| 2x8P | 14.00 | 17.70 | 16.70 |
| 2x9P | 16.00 | 19.70 | 18.70 |
| 2x10P | 18.00 | 21.70 | 20.70 |
| 2x11P | 20.00 | 23.70 | 22.70 |
| 2x12P | 22.00 | 25.70 | 24.70 |
| 2x13P | 24.00 | 27.70 | 26.70 |
| 2x14P | 26.00 | 29.70 | 28.70 |
| 2x15P | 28.00 | 31.70 | 30.70 |
| 2x16P | 30.00 | 33.70 | 32.70 |
| 2x20P | 38.00 | 41.70 | 40.70 |

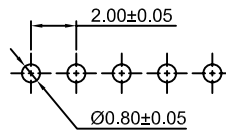
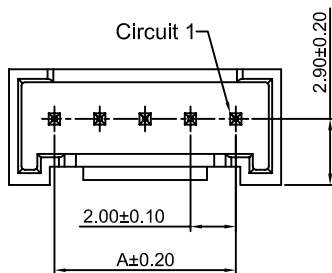
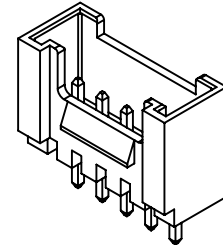
Unit: mm

A2008WV-XP

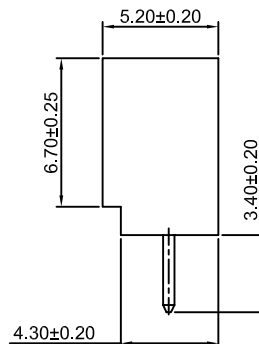
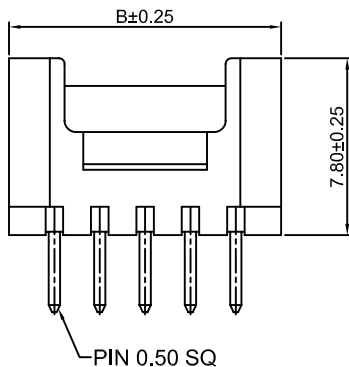
2.00mm pitch 180° Wafer

Reference Informations:

- *Material:Pin:Brass/Tin over Nickel
Insulator:Nylon 66,UL94V-0
- *Mates with CJT A2008 series Single Row Housing
- *Color:White



P.C.B LAYOUT



Ordering Information & Dimensions:

| PART NO. | Dimensions | |
|----------|------------|-------|
| | A | B |
| 2P | 2.00 | 6.00 |
| 3P | 4.00 | 8.00 |
| 4P | 6.00 | 10.00 |
| 5P | 8.00 | 12.00 |
| 6P | 10.00 | 14.00 |
| 7P | 12.00 | 16.00 |
| 8P | 14.00 | 18.00 |
| 9P | 16.00 | 20.00 |
| 10P | 18.00 | 22.00 |
| 11P | 20.00 | 24.00 |
| 12P | 22.00 | 26.00 |
| 13P | 24.00 | 28.00 |
| 14P | 26.00 | 30.00 |
| 15P | 28.00 | 32.00 |
| 16P | 30.00 | 34.00 |

Unit: mm

CJT_{conn} A2008 SERIES

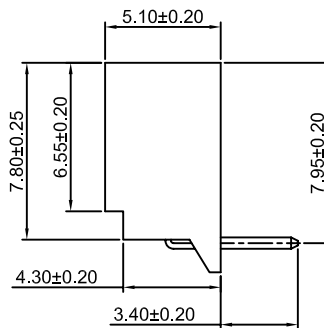
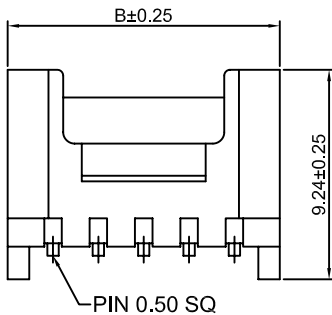
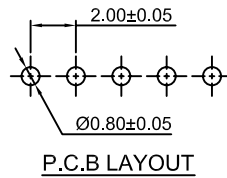
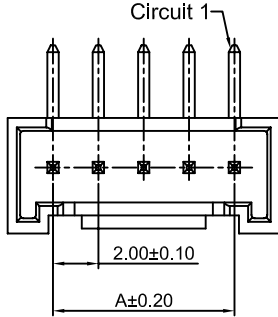
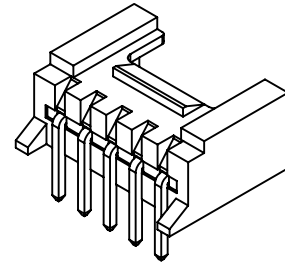
2.00mm pitch wire to board connector

A2008WR-XP

2.00mm pitch 90° Wafer

Reference Informations:

- *Material:Pin:Brass/Tin over Nickel
Insulator:Nylon 66,UL94V-0
- *Mates with CJT A2008 series Single Row Housing
- *Color:White



Ordering Information & Dimensions:

| PART NO. | Dimensions | |
|----------|------------|-------|
| | A | B |
| 2P | 2.00 | 6.00 |
| 3P | 4.00 | 8.00 |
| 4P | 6.00 | 10.00 |
| 5P | 8.00 | 12.00 |
| 6P | 10.00 | 14.00 |
| 7P | 12.00 | 16.00 |
| 8P | 14.00 | 18.00 |
| 9P | 16.00 | 20.00 |
| 10P | 18.00 | 22.00 |
| 11P | 20.00 | 24.00 |
| 12P | 22.00 | 26.00 |
| 13P | 24.00 | 28.00 |
| 14P | 26.00 | 30.00 |
| 15P | 28.00 | 32.00 |
| 16P | 30.00 | 34.00 |

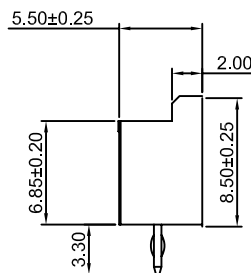
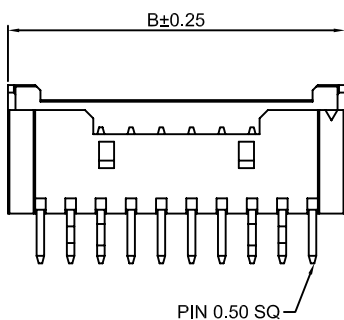
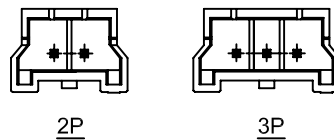
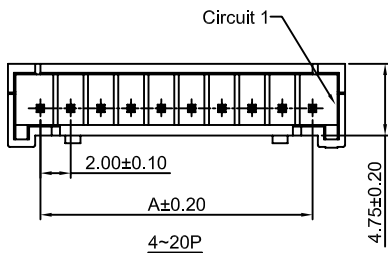
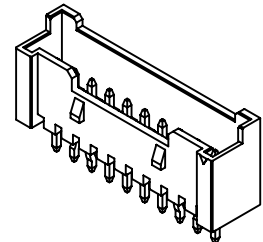
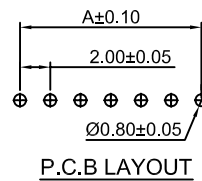
Unit: mm

A2008WVA-XP

2.00mm pitch 180° Wafer

Reference Informations:

- *Material:Pin:Brass/Tin over Nickel
Insulator:Nylon 66,UL94V-0
- *Mates with CJT A2008HA series Single Row Housing
- *Color:Ivory



Ordering Information & Dimensions:

| PART NO. | Dimensions | |
|----------|------------|-------|
| | A | B |
| 2P | 2.00 | 7.70 |
| 3P | 4.00 | 9.70 |
| 4P | 6.00 | 10.30 |
| 5P | 8.00 | 12.30 |
| 6P | 10.00 | 14.30 |
| 7P | 12.00 | 16.30 |
| 8P | 14.00 | 18.30 |
| 9P | 16.00 | 20.30 |
| 10P | 18.00 | 22.30 |
| 11P | 20.00 | 24.30 |
| 12P | 22.00 | 26.30 |
| 13P | 24.00 | 28.30 |
| 14P | 26.00 | 30.30 |
| 15P | 28.00 | 32.30 |
| 16P | 30.00 | 34.30 |
| 17P | 32.00 | 36.30 |
| 18P | 34.00 | 38.30 |
| 19P | 36.00 | 40.30 |
| 20P | 38.00 | 42.30 |

Unit: mm

CJT_{conn} A2008 SERIES

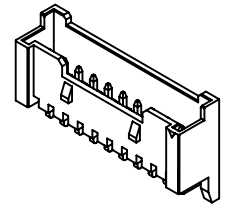
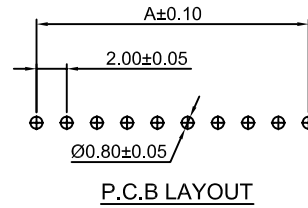
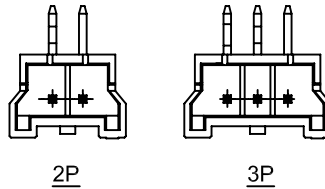
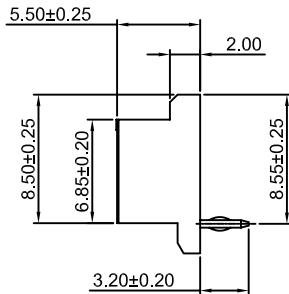
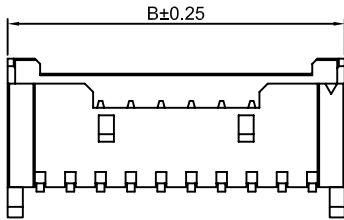
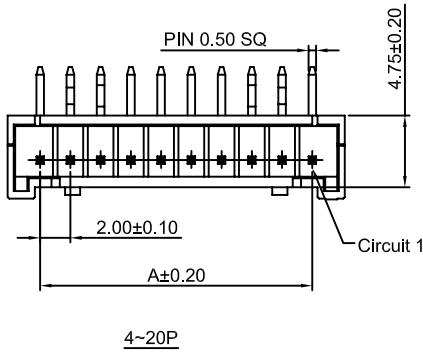
2.00mm pitch wire to board connector

A2008WRA-XP

2.00mm pitch 90° Wafer

Reference Informations:

- *Material:Pin:Brass/Tin over Nickel
Insulator:Nylon 66,UL94V-0
- *Mates with CJT A2008HA series Single Row Housing
- *Color:Ivory



Ordering Information & Dimensions:

| PART NO. | Dimensions | |
|----------|------------|-------|
| | A | B |
| 2P | 2.00 | 7.70 |
| 3P | 4.00 | 9.70 |
| 4P | 6.00 | 10.30 |
| 5P | 8.00 | 12.30 |
| 6P | 10.00 | 14.30 |
| 7P | 12.00 | 16.30 |
| 8P | 14.00 | 18.30 |
| 9P | 16.00 | 20.30 |
| 10P | 18.00 | 22.30 |
| 11P | 20.00 | 24.30 |
| 12P | 22.00 | 26.30 |
| 13P | 24.00 | 28.30 |
| 14P | 26.00 | 30.30 |
| 15P | 28.00 | 32.30 |
| 16P | 30.00 | 34.30 |
| 17P | 32.00 | 36.30 |
| 18P | 34.00 | 38.30 |
| 19P | 36.00 | 40.30 |
| 20P | 38.00 | 42.30 |

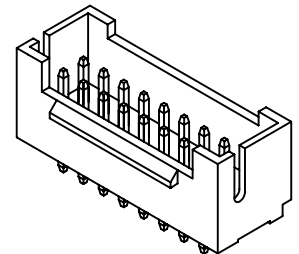
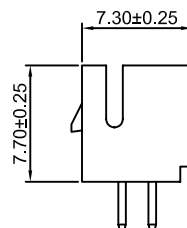
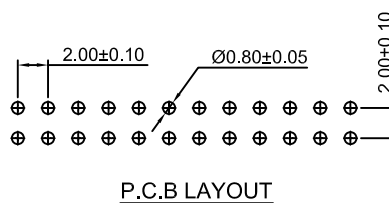
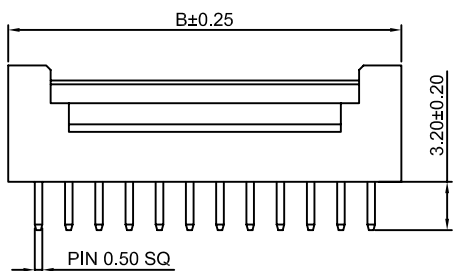
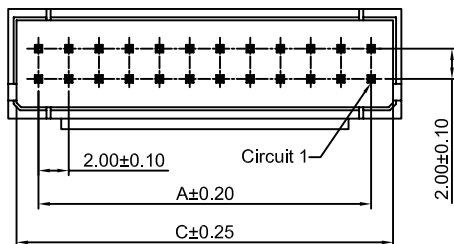
Unit: mm

A2008WV-2xXP

2.00mm pitch 180° Dual Row Wafer

Reference Informations:

- *Material:Pin:Brass/Tin over Nickel
Insulator:Nylon 66,UL94V-0
- *Mates with CJT A2008 series Dual Row Housing
- *Color:Ivory



Ordering Information & Dimensions:

| PART NO. | Dimensions | | |
|----------|------------|-------|-------|
| | A | B | C |
| 2x3P | 4.00 | 8.00 | 6.80 |
| 2x4P | 6.00 | 10.00 | 8.80 |
| 2x5P | 8.00 | 12.00 | 10.80 |
| 2x6P | 10.00 | 14.00 | 12.80 |
| 2x7P | 12.00 | 16.00 | 14.80 |
| 2x8P | 14.00 | 18.00 | 16.80 |
| 2x9P | 16.00 | 20.00 | 18.80 |
| 2x10P | 18.00 | 22.00 | 20.80 |
| 2x11P | 20.00 | 24.00 | 22.80 |
| 2x12P | 22.00 | 26.00 | 24.80 |
| 2x13P | 24.00 | 28.00 | 26.80 |
| 2x14P | 26.00 | 30.00 | 28.80 |
| 2x15P | 28.00 | 32.00 | 30.80 |
| 2x16P | 30.00 | 34.00 | 32.80 |
| 2x20P | 38.00 | 42.00 | 40.80 |

Unit: mm

CJT_{CONN} A2008 SERIES

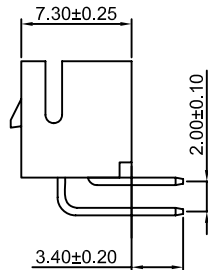
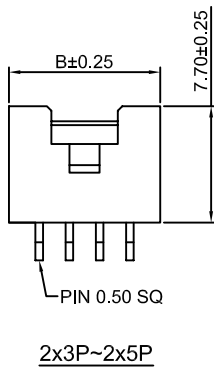
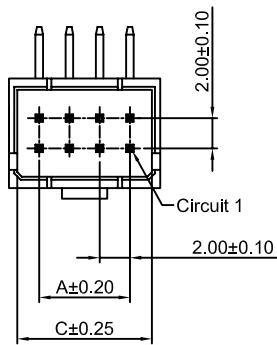
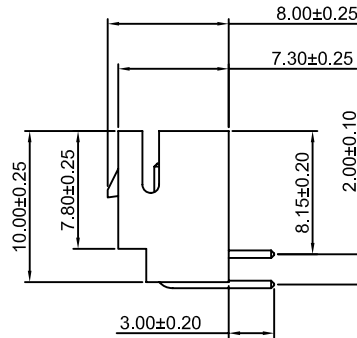
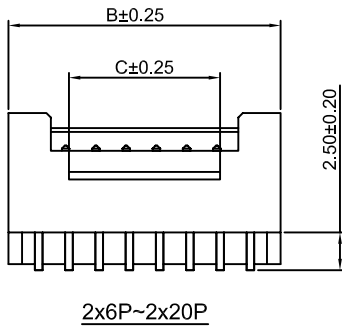
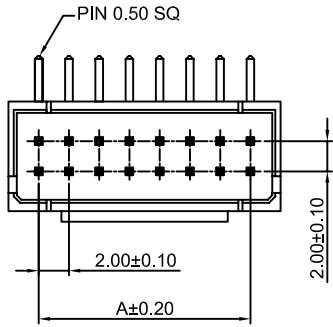
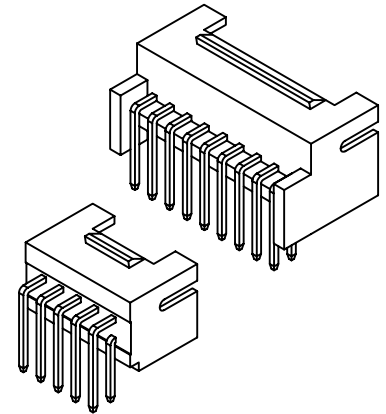
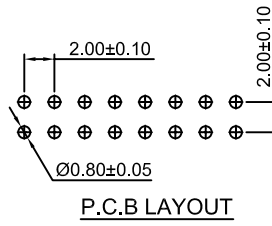
2.00mm pitch wire to board connector

A2008WR-2xXP

2.00mm pitch 90° Dual Row Wafer

Reference Informations:

- *Material: Pin: Brass/Tin over Nickel
Insulator: Nylon 66, UL94V-0
- *Mates with CJT A2008 series Dual Row Housing
- *Color: Ivory



Ordering Information & Dimensions:

| PART NO. | Dimensions | | |
|----------|------------|-------|-------|
| | A | B | C |
| 2x3P | 4.00 | 8.00 | 6.80 |
| 2x4P | 6.00 | 10.00 | 8.80 |
| 2x5P | 8.00 | 12.00 | 10.80 |
| 2x6P | 10.00 | 14.00 | 12.80 |
| 2x7P | 12.00 | 16.00 | 14.80 |
| 2x8P | 14.00 | 18.00 | 16.80 |
| 2x9P | 16.00 | 20.00 | 18.80 |
| 2x10P | 18.00 | 22.00 | 20.80 |
| 2x11P | 20.00 | 24.00 | 22.80 |
| 2x12P | 22.00 | 26.00 | 24.80 |
| 2x13P | 24.00 | 28.00 | 26.80 |
| 2x14P | 26.00 | 30.00 | 28.80 |
| 2x15P | 28.00 | 32.00 | 30.80 |
| 2x16P | 30.00 | 34.00 | 32.80 |
| 2x20P | 38.00 | 42.00 | 40.80 |

Unit: mm

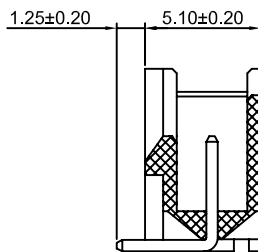
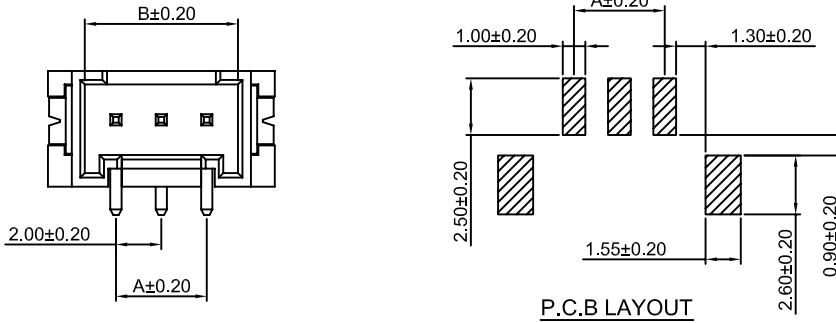
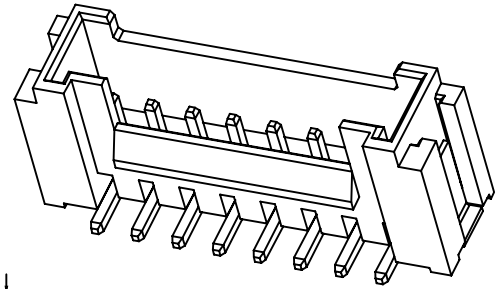
CJT_{CONN} A2008 SERIES

2.00mm pitch wire to board connector

A2008WV-S-XP — 2.00mm pitch 180° Wafer-SMT TYPE

Reference Informations:

- *Material: Pin: Brass/Tin over Nickel
Insulator: Nylon6T, UL94V-0
- *Mates with CJT A2008 series Single Row Housing
- *Color: Ivory



Ordering Information & Dimensions:

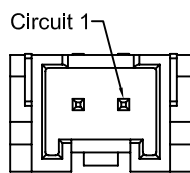
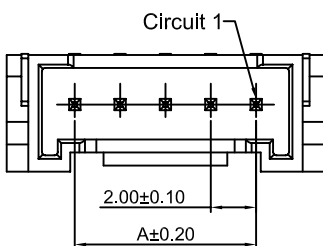
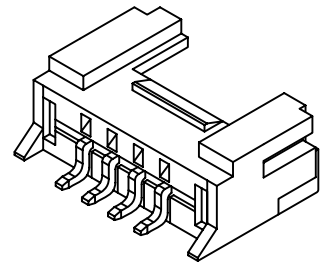
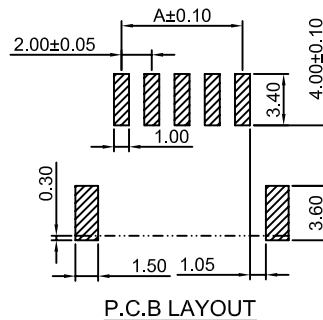
| PART NO. | Dimensions | | |
|----------|------------|-------|-------|
| | A | B | C |
| 2P | 2.00 | 4.75 | 8.00 |
| 3P | 4.00 | 6.75 | 10.00 |
| 4P | 6.00 | 8.75 | 12.00 |
| 5P | 8.00 | 10.75 | 14.00 |
| 6P | 10.00 | 12.75 | 16.00 |
| 7P | 12.00 | 14.75 | 18.00 |
| 8P | 14.00 | 16.75 | 20.00 |
| 9P | 16.00 | 18.75 | 22.00 |
| 10P | 18.00 | 20.75 | 24.00 |
| 11P | 20.00 | 22.75 | 26.00 |
| 12P | 22.00 | 24.75 | 28.00 |
| 13P | 24.00 | 26.75 | 30.00 |
| 14P | 26.00 | 28.75 | 32.00 |
| 15P | 28.00 | 30.75 | 34.00 |
| 16P | 30.00 | 32.75 | 36.00 |

Unit: mm

A2008WR-S-XP — 2.00mm pitch 90° Wafer-SMT TYPE

Reference Informations:

- *Material: Pin: Brass/Tin over Nickel
Insulator: Nylon6T, UL94V-0
- *Mates with CJT A2008 series Single Row Housing
- *Color: Beige



Ordering Information & Dimensions:

| PART NO. | Dimensions | |
|----------|------------|-------|
| | A | B |
| 2P | 2.00 | 8.00 |
| 3P | 4.00 | 10.00 |
| 4P | 6.00 | 12.00 |
| 5P | 8.00 | 14.00 |
| 6P | 10.00 | 16.00 |
| 7P | 12.00 | 18.00 |
| 8P | 14.00 | 20.00 |
| 9P | 16.00 | 22.00 |
| 10P | 18.00 | 24.00 |
| 11P | 20.00 | 26.00 |
| 12P | 22.00 | 28.00 |
| 13P | 24.00 | 30.00 |
| 14P | 26.00 | 32.00 |
| 15P | 28.00 | 34.00 |
| 16P | 30.00 | 36.00 |

Unit: mm

CJT Conn A2008 SERIES

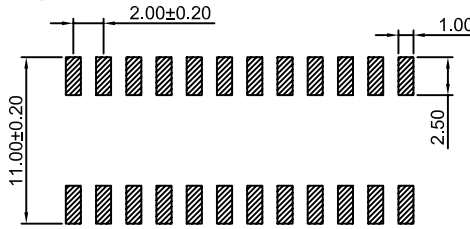
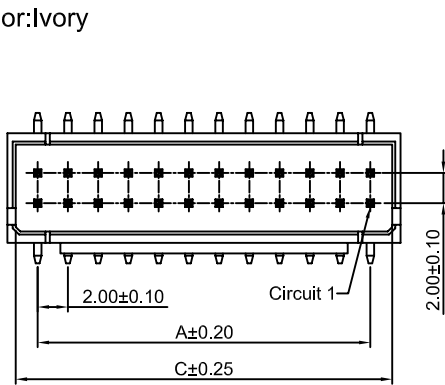
2.00mm pitch wire to board connector

A2008WV-S-2xXP

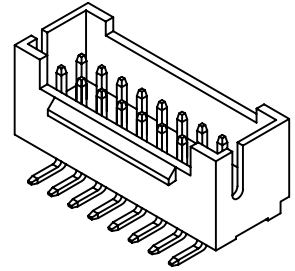
2.00mm pitch 180° Dual Row Wafer-SMT TYPE

Reference Informations:

- *Material:Pin:Brass/Tin over Nickel
Insulator:Nylon6T,UL94V-0
- *Mates with CJT A2008 series Dual Row Housing
- *Color:Ivory



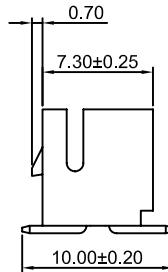
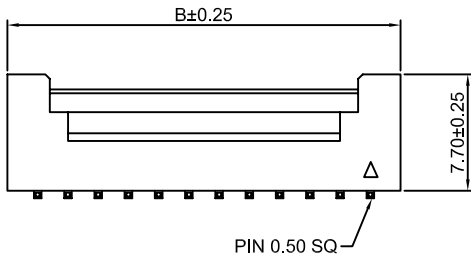
P.C.B LAYOUT



Ordering Information & Dimensions:

| PART NO. | Dimensions | | |
|----------|------------|-------|-------|
| | A | B | C |
| 2x3P | 4.00 | 8.00 | 6.80 |
| 2x4P | 6.00 | 10.00 | 8.80 |
| 2x5P | 8.00 | 12.00 | 10.80 |
| 2x6P | 10.00 | 14.00 | 12.80 |
| 2x7P | 12.00 | 16.00 | 14.80 |
| 2x8P | 14.00 | 18.00 | 16.80 |
| 2x9P | 16.00 | 20.00 | 18.80 |
| 2x10P | 18.00 | 22.00 | 20.80 |
| 2x11P | 20.00 | 24.00 | 22.80 |
| 2x12P | 22.00 | 26.00 | 24.80 |
| 2x13P | 24.00 | 28.00 | 26.80 |
| 2x14P | 26.00 | 30.00 | 28.80 |
| 2x15P | 28.00 | 32.00 | 30.80 |
| 2x16P | 30.00 | 34.00 | 32.80 |
| 2x20P | 38.00 | 42.00 | 40.80 |

Unit: mm

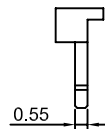
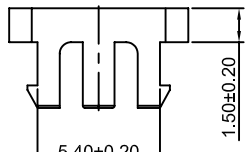
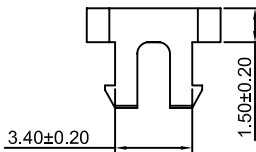
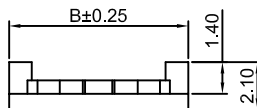
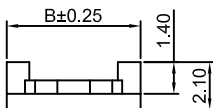


A2008S-XP

2.00mm pitch Seal

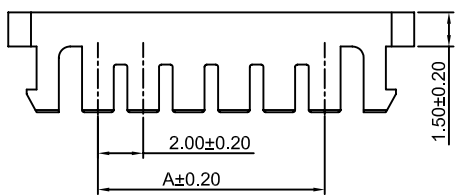
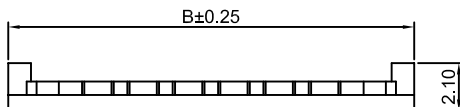
Reference Informations:

- *Material:Nylon 66,UL94V-2
- *Use in CJT A2008 series Housing
- *Color:Brick red

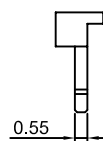


2P

3P



4P~15P



Ordering Information & Dimensions:

| PART NO. | Dimensions | |
|----------|------------|-------|
| | A | B |
| 2P | 3.40 | 5.90 |
| 3P | 5.40 | 7.90 |
| 4P | 7.40 | 9.90 |
| 5P | 9.40 | 11.90 |
| 6P | 11.40 | 13.90 |
| 7P | 13.40 | 15.90 |
| 8P | 15.40 | 17.90 |
| 9P | 17.40 | 19.90 |
| 10P | 19.40 | 21.90 |
| 11P | 21.40 | 23.90 |
| 12P | 23.40 | 25.90 |
| 13P | 25.40 | 27.90 |
| 14P | 27.40 | 29.90 |
| 15P | 29.40 | 31.90 |

Unit: mm