



B2541 SERIES

2.54mm pitch board to board connector

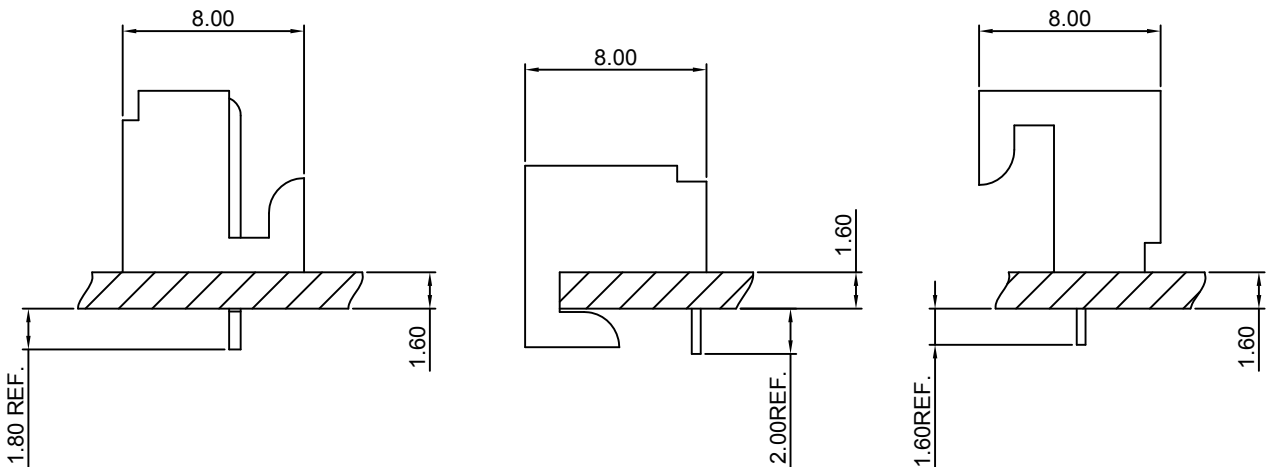
Specifications

- Current rating:2.5A AC,DC
- Voltage rating:250V AC,DC
- Temperature range:-40°C~+105°C
- Contact resistance:20mΩMax.
- Insulation resistance:100MΩMin.
- Withstanding voltage:500V AC/minute
- *Compliant with RoHS and REACH*
- *Meet the HF/Halogen Free need to customize*
- *Contact CJT for details*

Standards



Assembly layout





B2541 SERIES

2.54mm pitch board to board connector

B2541AW-XP

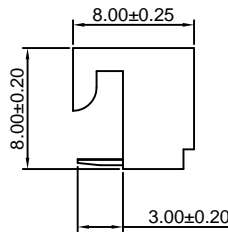
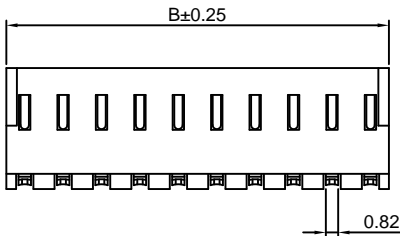
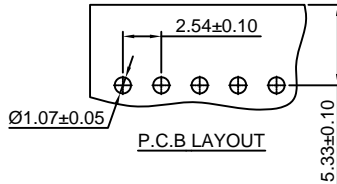
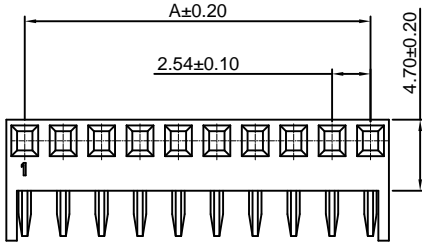
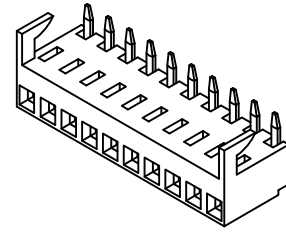
2.54mm Pitch PC Board Connector-Ringnt Angle

Reference Informations:

- *Material:Pin:Phosphor Bronze/Tin over Nickel
Insulator:Nylon 66,UL94V-0
- *Mates with CJT A2541WV,WR,WVA,WRA-XP, A2543WV,WR,WVA,WRA-XP series Wafer
- *Color:White

Ordering Information:

- B2541AW-XP - ***
1 2
- 1.Part No.
- 2.Material:
(blank):Nylon 66,UL94V-0
GWT:Nylon 66,UL94V-0,GWT 750°C



Ordering Information & Dimensions:

PART NO.	Dimensions	
	A	B
2P	2.54	4.98
3P	5.08	7.52
4P	7.62	10.06
5P	10.16	12.60
6P	12.70	15.14
7P	15.24	17.68
8P	17.78	20.22
9P	20.32	22.76
10P	22.86	25.30
11P	25.40	27.84
12P	27.94	30.38
13P	30.48	32.92
14P	33.02	35.46
15P	35.56	38.00
16P	38.10	40.54

Unit: mm

B2541BW-XP

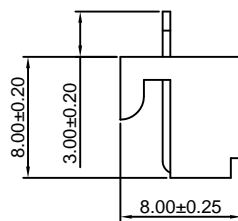
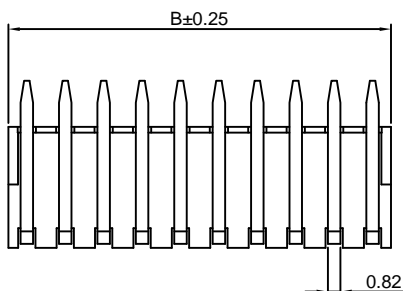
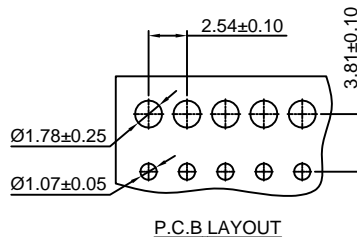
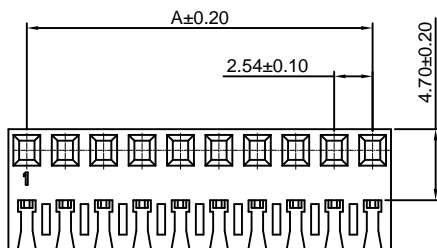
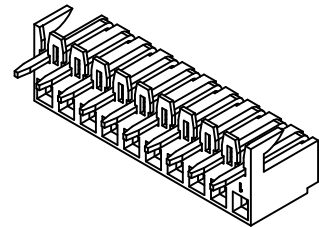
2.54mm Pitch PC Board Connertor-Bottom Entry

Reference Informations:

- *Material:Pin:Phosphor Bronze/Tin over Nickel
Insulator:Nylon 66,UL94V-0
- *Mates with CJT A2541WV,WR,WVA,WRA-XP, A2543WV,WR,WVA,WRA-XP series Wafer
- *Color:White

Ordering Information:

- B2541BW-XP - ***
1 2
- 1.Part No.
- 2.Material:
(blank):Nylon 66,UL94V-0
GWT:Nylon 66,UL94V-0,GWT 750°C



Ordering Information & Dimensions:

PART NO.	Dimensions	
	A	B
2P	2.54	4.98
3P	5.08	7.52
4P	7.62	10.06
5P	10.16	12.60
6P	12.70	15.14
7P	15.24	17.68
8P	17.78	20.22
9P	20.32	22.76
10P	22.86	25.30
11P	25.40	27.84
12P	27.94	30.38
13P	30.48	32.92
14P	33.02	35.46
15P	35.56	38.00
16P	38.10	40.54

Unit: mm



B2541 SERIES

2.54mm pitch board to board connector

B2541CW-XP

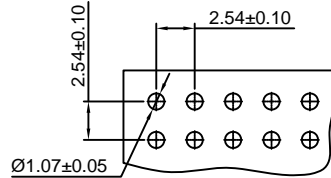
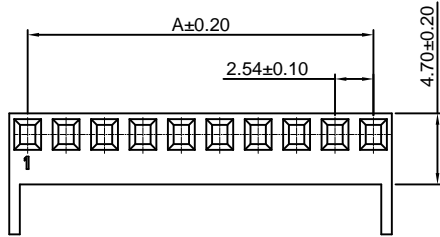
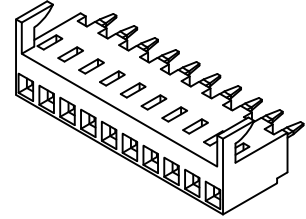
2.54mm Pitch PC Board Connector-Top Entry

Reference Informations:

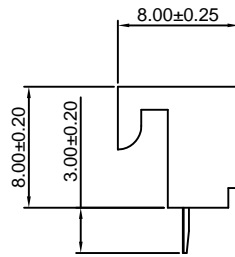
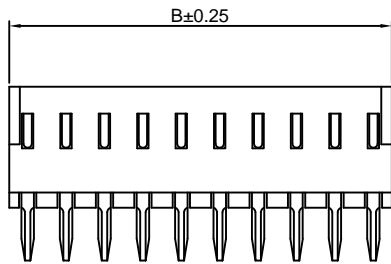
- *Material:Pin:Phosphor Bronze/Tin over Nickel
Insulator:Nylon 66,UL94V-0
- *Mates with CJT A2541WV,WR,WVA,WRA-XP,
A2543WV,WR,WVA,WRA-XP series Wafer
- *Color:White

Ordering Information:

- B2541CW-XP - *****
1 / 2
- 1.Part No.
- 2.Material:
(blank):Nylon 66,UL94V-0
GWT:Nylon 66,UL94V-0,GWT 750°C



P.C.B LAYOUT



Ordering Information & Dimensions:

PART NO.	Dimensions	
	A	B
2P	2.54	4.98
3P	5.08	7.52
4P	7.62	10.06
5P	10.16	12.60
6P	12.70	15.14
7P	15.24	17.68
8P	17.78	20.22
9P	20.32	22.76
10P	22.86	25.30
11P	25.40	27.84
12P	27.94	30.38
13P	30.48	32.92
14P	33.02	35.46
15P	35.56	38.00
16P	38.10	40.54

Unit: mm