

REV.	ECR/N NO./DESCRIPTION	DATE	DRAWN	CHECKED	APPROVE
1A	SN17***	07/05'17	Jingyan.Zhao	Vito.Li	Ford
1B	SR18033	05/15'18	Huawei.Zhao	Vito.Li	Ford
1C	SR18033	11/07'18	Huawei.Zhao	Vito.Li	Ford

NOTES:

- MATERIAL SPECIFICATION:  
1-1. HOUSING:LCP+40%GF, UL94V-0, COLOR: BLACK.  
1-2. CONTACT:COPPER ALLOY .
- PLATING SPECIFICATION:  
2-1. CONTACT:  
50u" MIN.NICKEL UNDER PLATING OVER ALL.  
GOLD PLATING ON CONTACT SEE TABLE1, AND SOLDER AREA IS TIN.
- HF COMPLIANT,ROHS COMPLIANT.
- DATE CODE: XXXXXX  
DAY  
WEEK  
YEAR
- MECHANICAL PERFORMANCE:  
5-1. DURABILITY: SEE TABLE
- ELECTRICAL PERFORMANCE:  
6-1. CURRENT: 0.5A PER PIN.  
6-2. LLCR: INITIAL 55mΩ MAX. ; FINAL ΔLLCR=20mΩ MAX..
- IR REFLOW:  
THE TEMPERATURE SHALL BE 260±5°C MAINTAINING 10±1 SECONDS.
- PRODUCT NUMBER NOTE  
A P C I X X X X X X X X X X X X X X X X  
PACKING TYPE  
PRODUCT SERIAL NUMBER  
K:ROHS COMPLIANT/P:HF COMPLIANT  
TYPE SERIAL NUMBER  
PRODUCT TYPE  
FINISHED PRODUCT

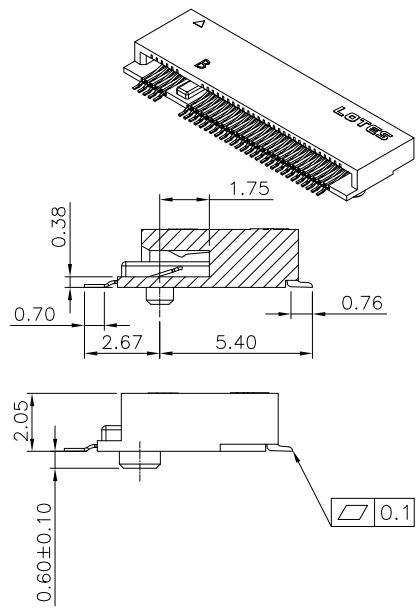
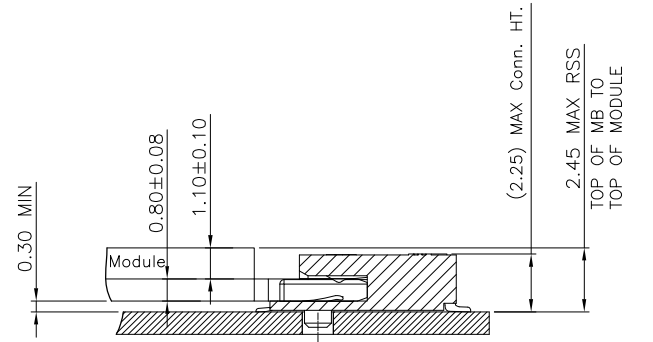
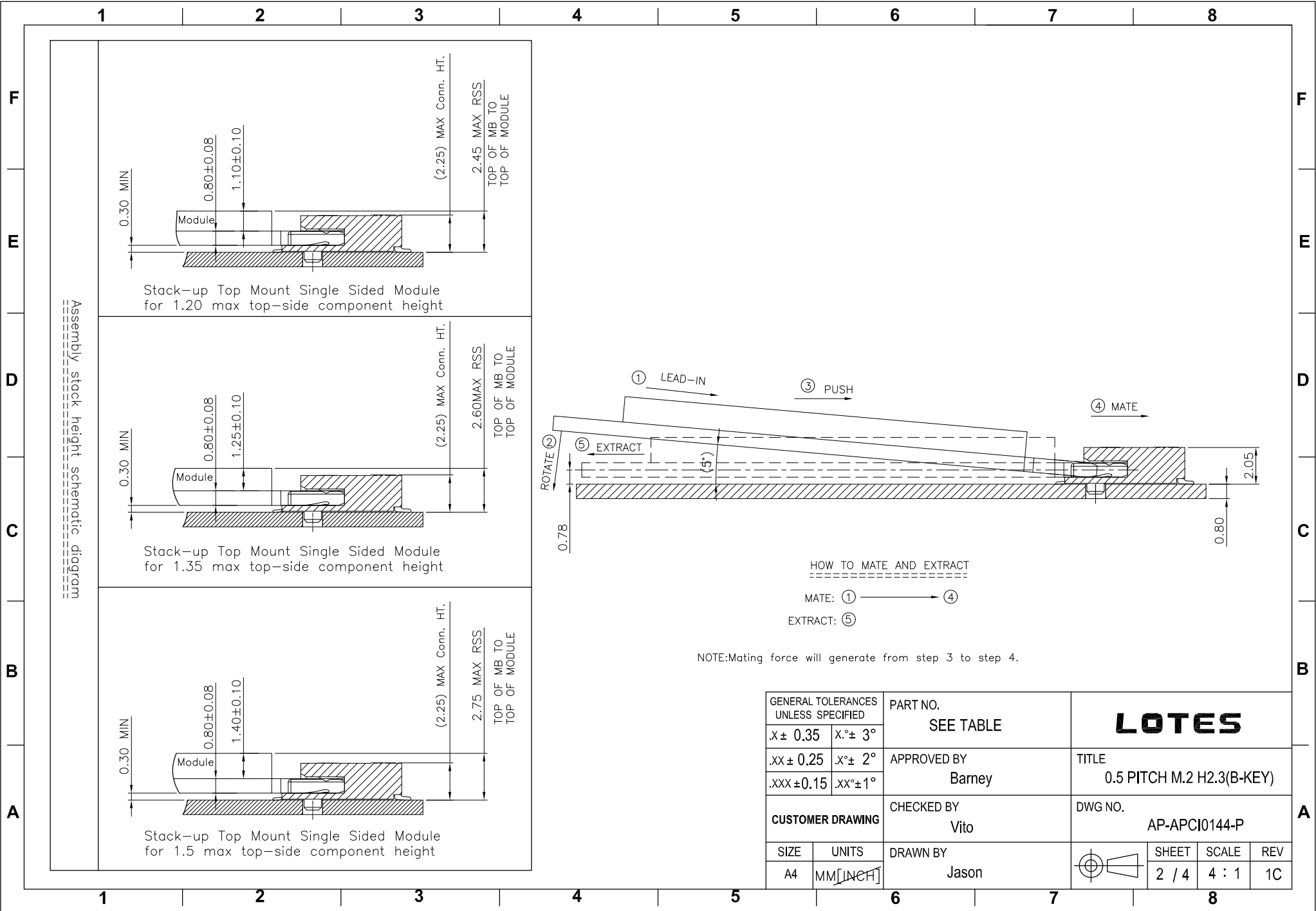


TABLE 1

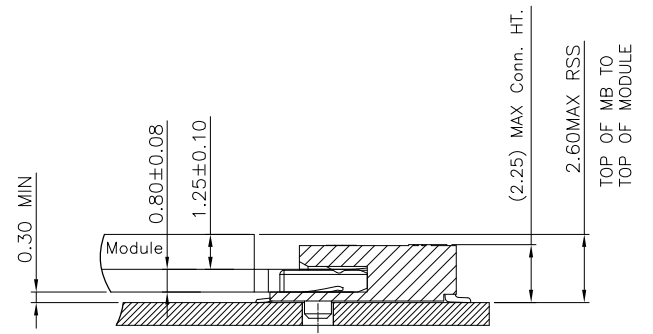
KEY NO.	PART NO.	CONTACT PLATING	DURABILITY	TAB
B	APCI0144-P012A	15u" GOLD	25 CYCLES.	WITHOUT
B	APCI0144-P002A	10u" GOLD	25 CYCLES.	WITHOUT
B	APCI0144-P001A	1-3u" GOLD	25 CYCLES.	WITHOUT

GENERAL TOLERANCES UNLESS SPECIFIED		PART NO.	LOTES			
X ± 0.35	X° ± 3°	SEE TABLE				
.XX ± 0.25	X° ± 2°	APPROVED BY	TITLE			
.XXX ± 0.15	.XX° ± 1°	Barney	0.5 PITCH M.2 H2.3(B-KEY)			
CUSTOMER DRAWING		CHECKED BY	DWG NO.			
		Vito	AP-APCI0144-P			
SIZE	UNITS	DRAWN BY	SHEET			
A4	MM [INCH]	Jason	1 / 4	SCALE	REV	
			4 : 1	1C		

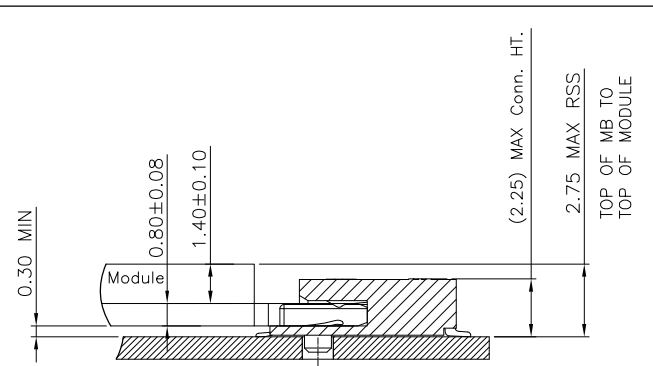
9.PLEASE DON'T INSERT CARD INTO FREE PRODUCT BEFORE SMT PROCESS .



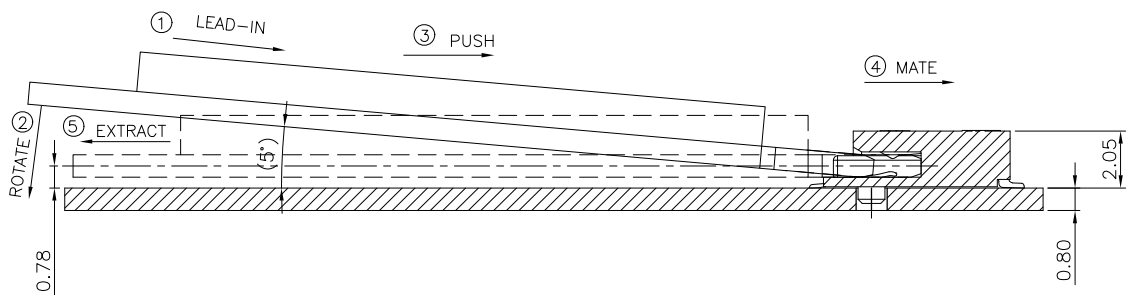
Stack-up Top Mount Single Sided Module for 1.20 max top-side component height



Stack-up Top Mount Single Sided Module for 1.35 max top-side component height



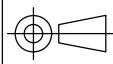
Stack-up Top Mount Single Sided Module for 1.5 max top-side component height

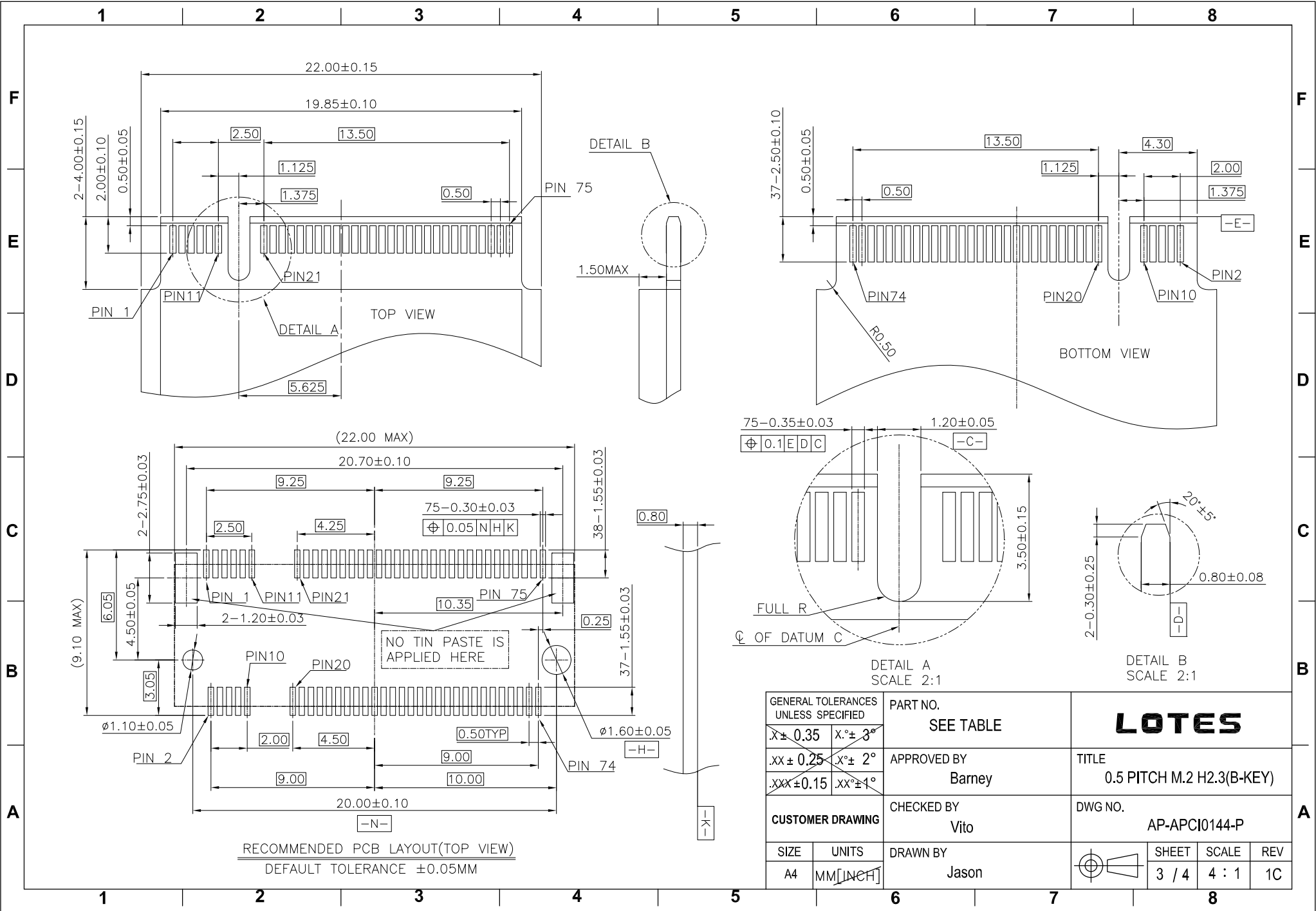


HOW TO MATE AND EXTRACT

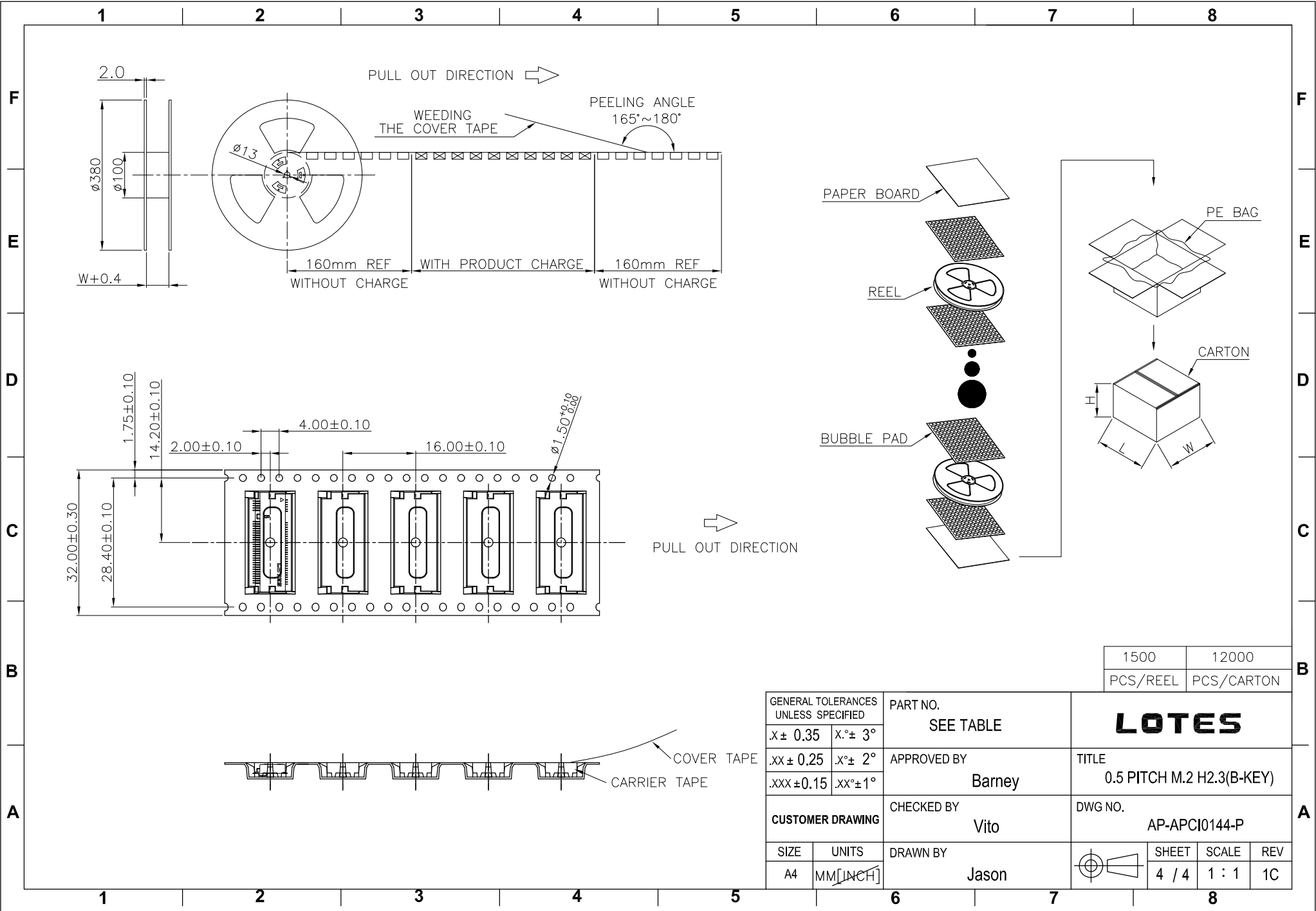
- MATE: ① → ④  
 EXTRACT: ⑤

NOTE: Mating force will generate from step 3 to step 4.

GENERAL TOLERANCES UNLESS SPECIFIED		PART NO. SEE TABLE	<b>LOTES</b>			
X ± 0.35	X° ± 3°					
.XX ± 0.25	X° ± 2°	APPROVED BY Barney	TITLE 0.5 PITCH M.2 H2.3(B-KEY)			
.XXX ± 0.15	.XX° ± 1°	CHECKED BY Vito	DWG NO. AP-APCI0144-P			
CUSTOMER DRAWING		DRAWN BY Jason		SHEET	SCALE	REV
SIZE A4	UNITS MM [INCH]			2 / 4	4 : 1	1C



GENERAL TOLERANCES UNLESS SPECIFIED		PART NO. SEE TABLE	<b>LOTES</b>		
$X \pm 0.35$	$X^\circ \pm 3^\circ$				
$.XX \pm 0.25$	$X^\circ \pm 2^\circ$	APPROVED BY Barney	TITLE 0.5 PITCH M.2 H2.3(B-KEY)		
$.XX \pm 0.15$	$.XX^\circ \pm 1^\circ$	CHECKED BY Vito	DWG NO. AP-APCI0144-P		
CUSTOMER DRAWING		DRAWN BY Jason	SHEET 3 / 4	SCALE 4 : 1	REV 1C
SIZE A4	UNITS MM [INCH]				



1500	12000
PCS/REEL	PCS/CARTON

GENERAL TOLERANCES UNLESS SPECIFIED		PART NO. SEE TABLE	<b>LOTES</b>		
X ± 0.35	X° ± 3°				
.XX ± 0.25	X° ± 2°	APPROVED BY Barney	TITLE 0.5 PITCH M.2 H2.3(B-KEY)		
.XXX ± 0.15	.XX° ± 1°	CHECKED BY Vito	DWG NO. AP-APCI0144-P		
CUSTOMER DRAWING		DRAWN BY Jason	SHEET 4 / 4	SCALE 1 : 1	REV 1C
SIZE A4	UNITS MM [INCH]				

