



TABLE:

NO.	PART NO.	DESCRIPTION	DURABILITY
1	APCI0136-P001A	GOLD G/F ON CONTACT AREA	25 CYCLES
		GOLD G/F ON SOLDER AREA	
2	APCI0136-P002A	GOLD 10u" ON CONTACT AREA	25 CYCLES
		GOLD G/F ON SOLDER AREA	
3	APCI0136-P003A	GOLD 15u" ON CONTACT AREA	25 CYCLES
		GOLD G/F ON SOLDER AREA	
4	APCI0136-P004A	GOLD 30u" ON CONTACT AREA	60 CYCLES
		GOLD G/F ON SOLDER AREA	

Notes:

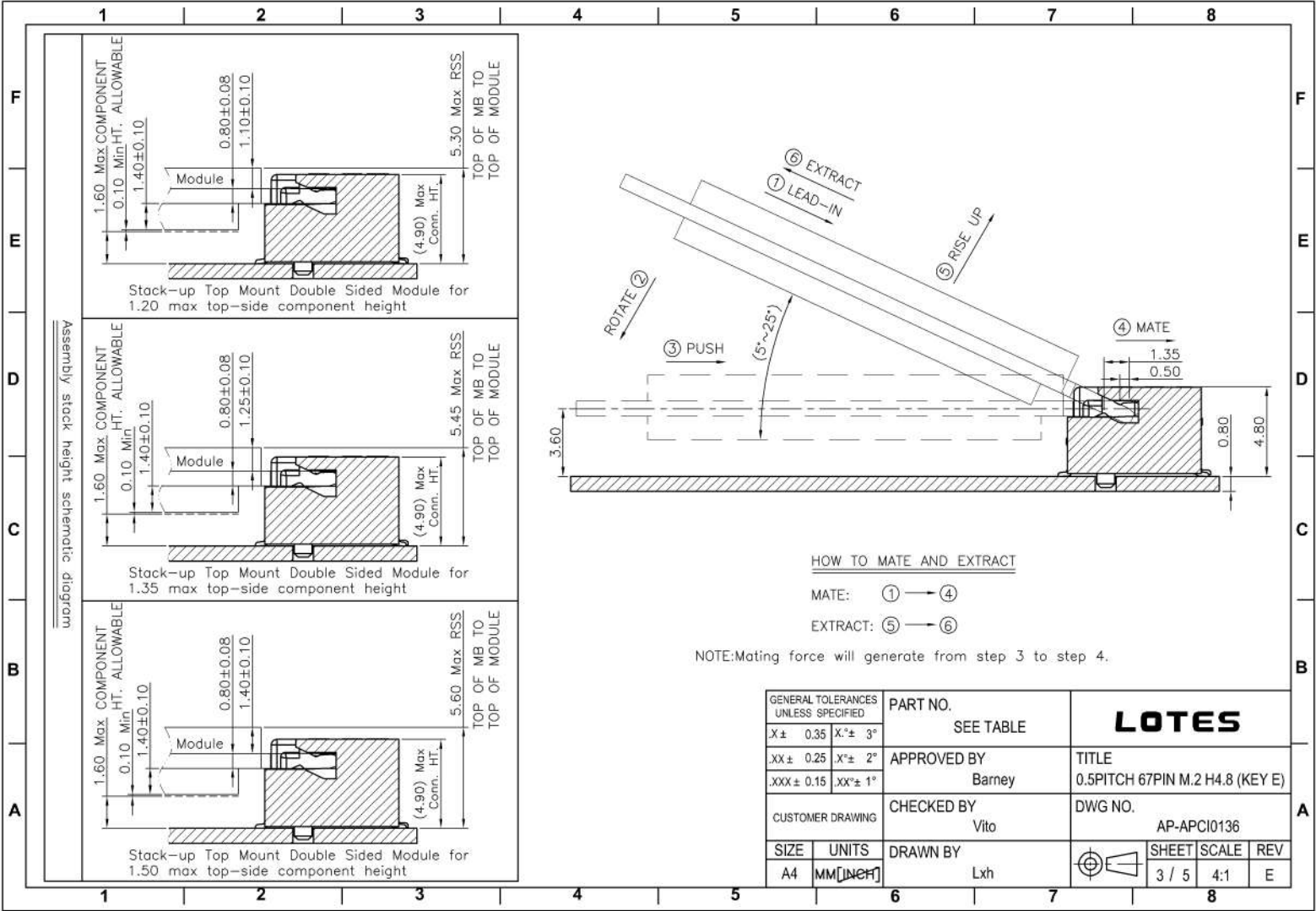
- MATERIAL SPECIFICATION:
  - HOUSING:LCP+40%GF,UL94V-0,COLOR:BLACK.
  - CONTACT:COPPER ALLOY.
  - PEG:STEEL.
- PLATING SPECIFICATION:
  - CONTACT:50u" MIN.NICKEL UNDER PLATING OVER ALL.PLATING ON SOLDER AREA:SEE TABLE GOLD PLATING ON CONTACT AREA:SEE TABLE
  - PEG:50u" MIN. NICKEL UNDER PLATING OVER ALL. 80u" MIN. MATTE TIN PLATING ON SOLDER AREA.
- HF COMPLIANT, RoHS COMPLIANT.
- DATE CODE: XX XX XX  
 DAY  
 WEEK  
 YEAR
- MECHANICAL PERFORMANCE:
  - DURABILITY: SEE TABLE
- ELECTRICAL PERFORMANCE:
  - CURRENT: 0.5A PER PIN.
  - LLCR: INITIAL 55mΩ MAX.;FINAL ΔLLCR=20mΩ MAX.
- IR REFLOW:  
 THE TEMPERATURE SHALL BE 260±5°C MAINTAINING 10±1 SECONDS.
- PRODUCT NUMBER NOTE:

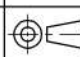
A P C I X X X X - X X X X

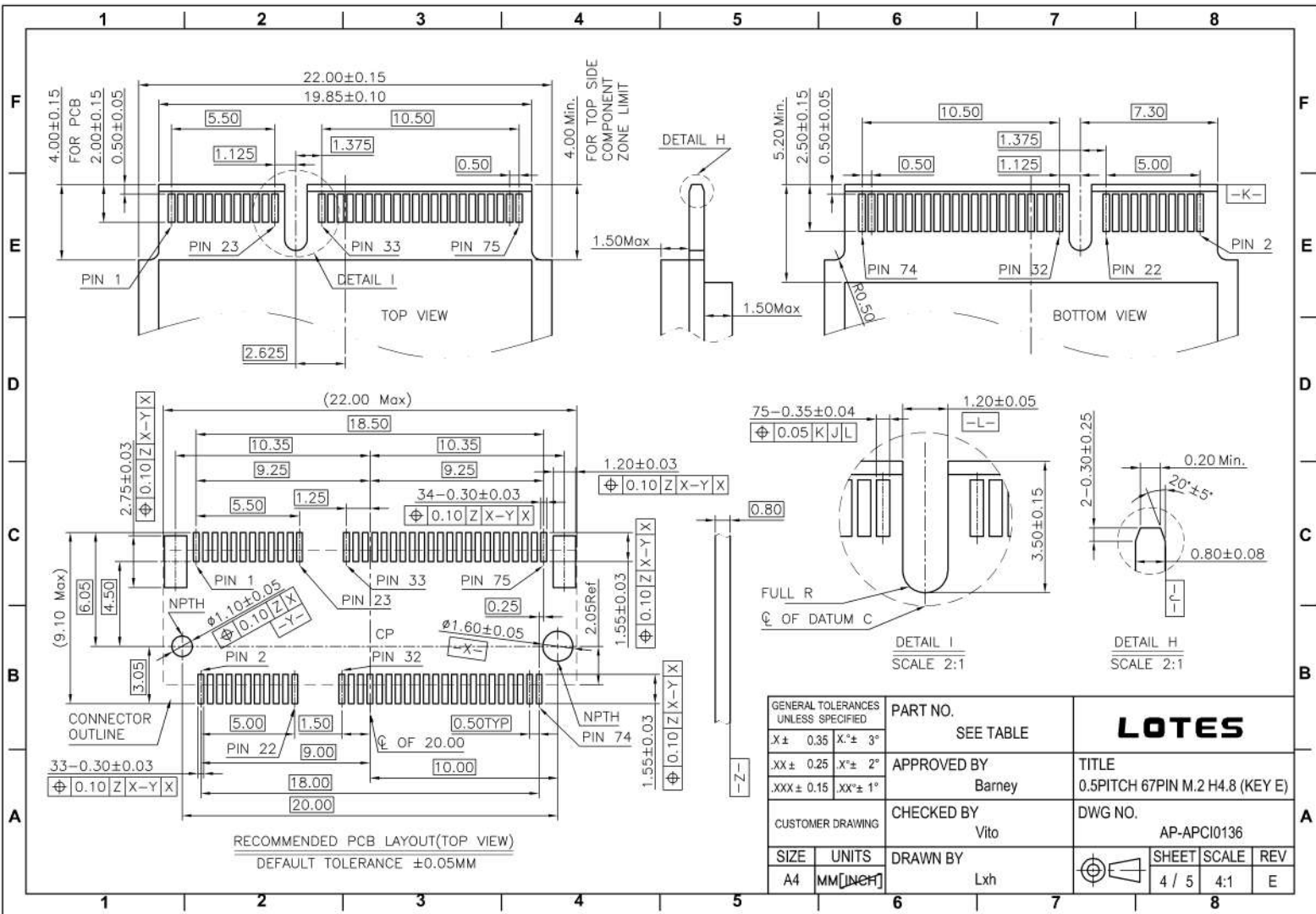
FINISHED PRODUCT

- PACKING TYPE
- PRODUCT SERIAL NUMBER
- P:HF COMPLIANT
- TYPE SERIAL NUMBER
- PRODUCT TYPE

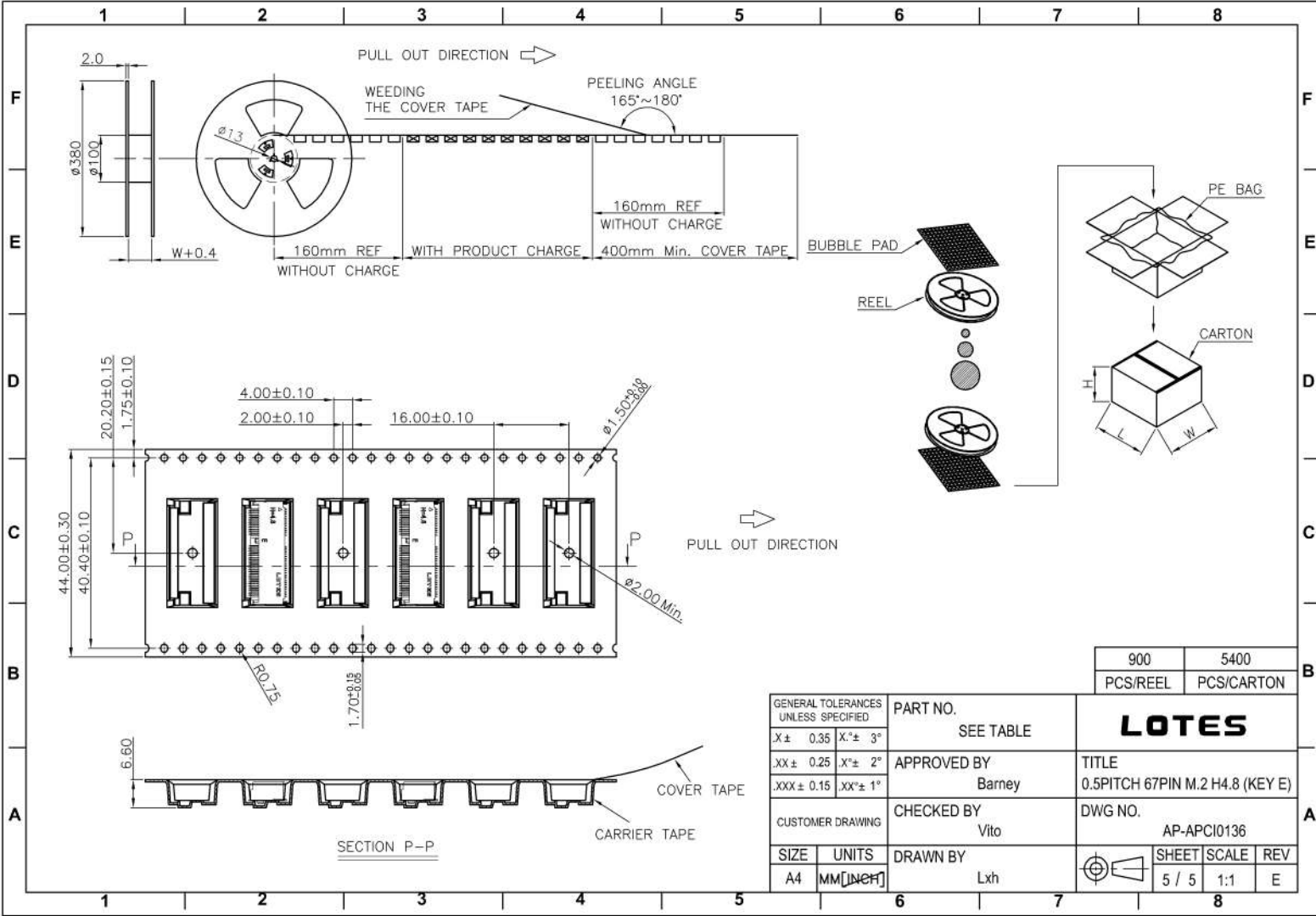
GENERAL TOLERANCES UNLESS SPECIFIED		PART NO. SEE TABLE	<b>LOTES</b>		
X ± 0.35	X° ± 0°	APPROVED BY Barney	TITLE 0.5PITCH 67PIN M.2 H4.8 (KEY E)		
XX ± 0.25	XX° ± 2°	CHECKED BY Vito	DWG NO. AP-APCI0136		
XXX ± 0.15	XXX° ± 1°	CUSTOMER DRAWING	DRAWN BY Lxh		
SIZE A4	UNITS MM[INCH]	SHEET 2 / 5		SCALE 4:1	REV E



GENERAL TOLERANCES UNLESS SPECIFIED		PART NO.	<b>LOTES</b>						
X ± 0.35	X° ± 3°	SEE TABLE							
XX ± 0.25	.X° ± 2°	APPROVED BY	TITLE						
XXX ± 0.15	.XX° ± 1°	Barney	0.5PITCH 67PIN M.2 H4.8 (KEY E)						
CUSTOMER DRAWING		CHECKED BY	DWG NO.						
		Vito	AP-APCI0136						
SIZE	UNITS	DRAWN BY	 <table border="1"> <tr> <th>SHEET</th> <th>SCALE</th> <th>REV</th> </tr> <tr> <td>3 / 5</td> <td>4:1</td> <td>E</td> </tr> </table>	SHEET	SCALE	REV	3 / 5	4:1	E
SHEET	SCALE	REV							
3 / 5	4:1	E							
A4	MM [INCH]	Lxh							



GENERAL TOLERANCES UNLESS SPECIFIED		PART NO.	<b>LOTES</b>
SEE TABLE		SEE TABLE	
$X \pm 0.35$	$X^\circ \pm 3^\circ$	APPROVED BY	TITLE
$XX \pm 0.25$	$XX^\circ \pm 2^\circ$	Barney	0.5PITCH 67PIN M.2 H4.8 (KEY E)
$XXX \pm 0.15$	$XXX^\circ \pm 1^\circ$	CHECKED BY	DWG NO.
CUSTOMER DRAWING		Vito	AP-APCI0136
SIZE	UNITS	DRAWN BY	SHEET SCALE REV
A4	MM [INCH]	Lxh	4 / 5 4:1 E



900	5400
PCS/REEL	PCS/CARTON

GENERAL TOLERANCES UNLESS SPECIFIED		PART NO.	SEE TABLE	<b>LOTES</b>		
X ± 0.35	X° ± 3°	APPROVED BY				
XX ± 0.25	X° ± 2°	Barney	TITLE	0.5PITCH 67PIN M.2 H4.8 (KEY E)		
XXX ± 0.15	XX° ± 1°	CHECKED BY	DWG NO.	AP-APCI0136		
CUSTOMER DRAWING	Vito	DRAWN BY		SHEET	SCALE	REV
SIZE	UNITS	Lxh		5 / 5	1:1	E
A4	MM [INCH]					