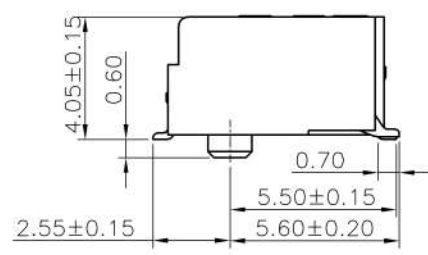
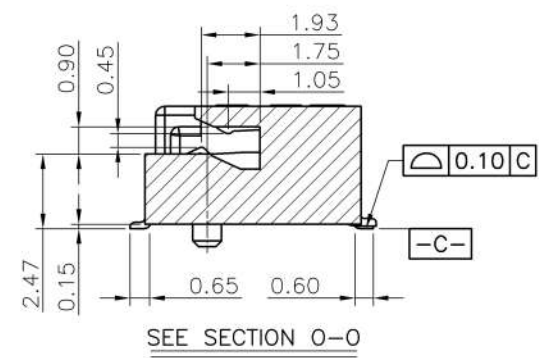
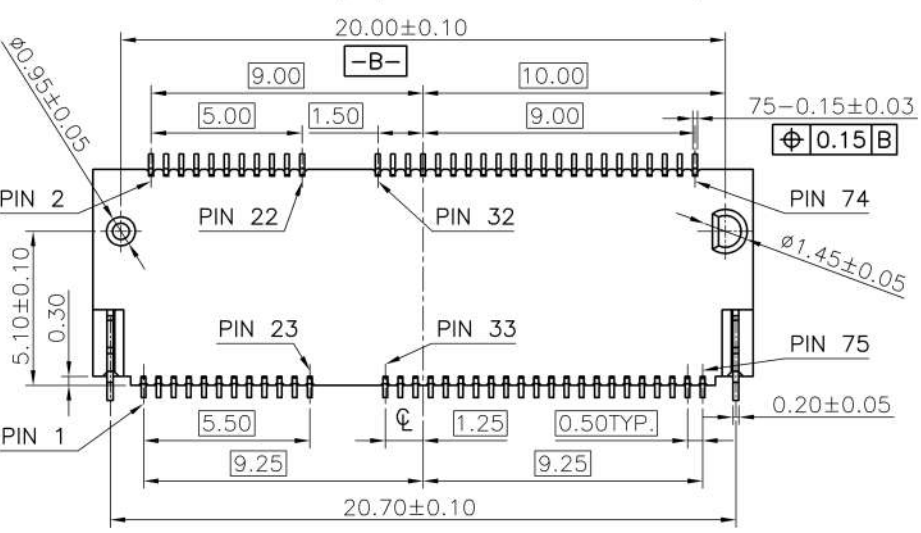
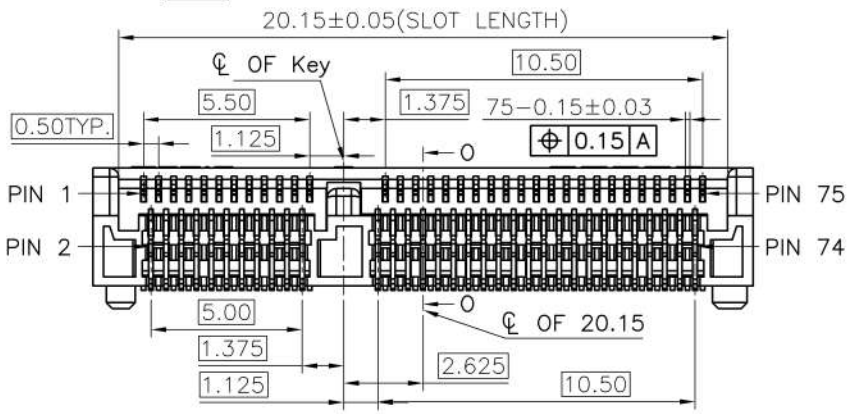
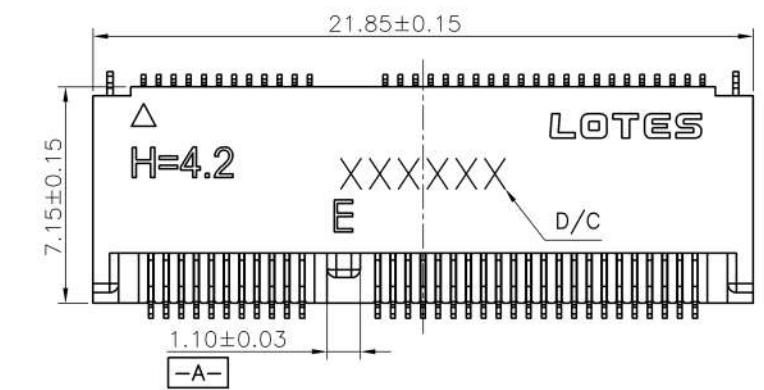
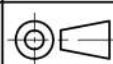


REV.	ECR/N NO./DESCRIPTION	DATE	DRAWN	CHECKED	APPROVE
1	SN14155	11/17'14	Lxh	Vito	Barney
1A	SN18***	01/19'18	Jingyan.Zhao	Vito	Ford

F
E
D
C
B
A

F
E
D
C
B
A



GENERAL TOLERANCES UNLESS SPECIFIED		PART NO.	LOTES						
$X \pm 0.35$	$X^\circ \pm 3^\circ$	SEE TABLE							
$XX \pm 0.25$	$X^\circ \pm 2^\circ$	APPROVED BY Barney 11/17'14	TITLE 0.5 PITCH M.2 H4.2 (KEY E)						
$XXX \pm 0.15$	$XX^\circ \pm 1^\circ$	CHECKED BY Vito 11/17'14	DWG NO. AP-APCI0108						
SIZE	UNITS	DRAWN BY Lxh 11/17'14	 <table border="1"> <tr> <th>SHEET</th> <th>SCALE</th> <th>REV</th> </tr> <tr> <td>1 / 5</td> <td>4:1</td> <td>1A</td> </tr> </table>	SHEET	SCALE	REV	1 / 5	4:1	1A
SHEET	SCALE	REV							
1 / 5	4:1	1A							
A4	MM [INCH]								

1 2 3 4 5 6 7 8

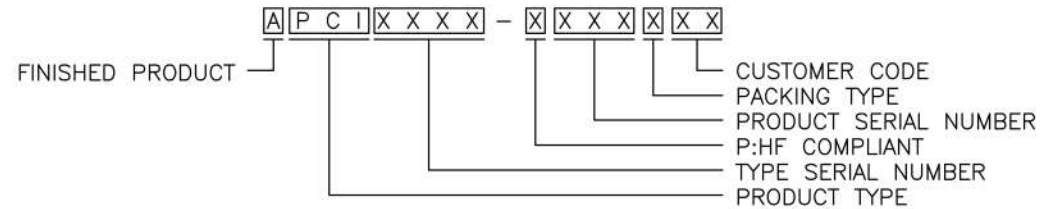
TABLE:

NO.	PART NO.	DESCRIPTION	DURABILITY
1	APCI0108-P001A	GOLD G/F ON CONTACT AREA	25 CYCLES
		GOLD G/F ON SOLDER AREA	
2	APCI0108-P002A	GOLD 10u" ON CONTACT AREA	25 CYCLES
		GOLD G/F ON SOLDER AREA	
3	APCI0108-P003A	GOLD 15u" ON CONTACT AREA	25 CYCLES
		GOLD G/F ON SOLDER AREA	
4	APCI0108-P004A	GOLD 30u" ON CONTACT AREA	60 CYCLES
		GOLD G/F ON SOLDER AREA	

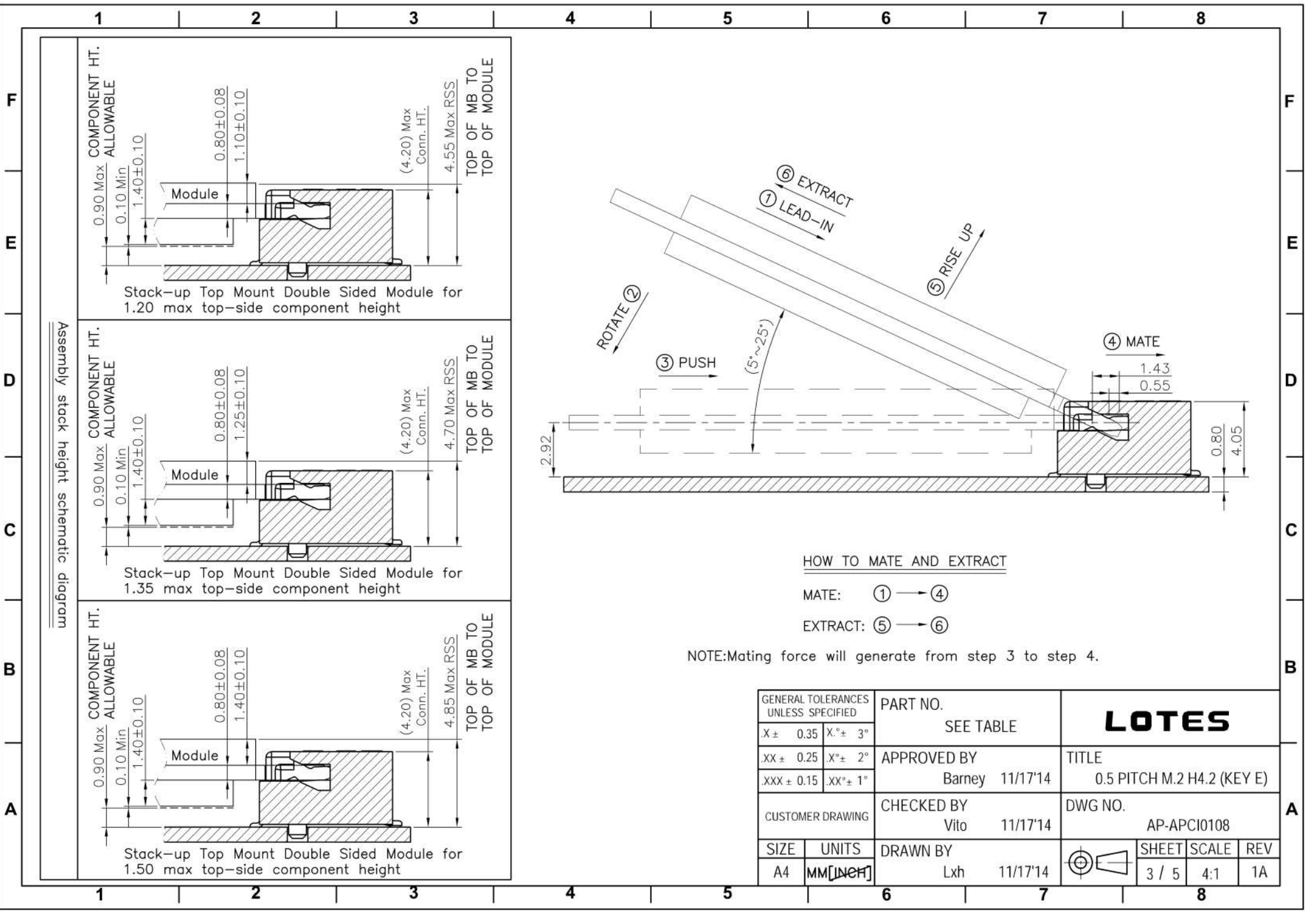
Notes:

1. MATERIAL SPECIFICATION:
 - 1.1. HOUSING:LCP+40%GF,UL94V-0,COLOR:BLACK.
 - 1.2. CONTACT:COPPER ALLOY.
 - 1.3. PEG:STEEL.
2. PLATING SPECIFICATION:
 - 2.1. CONTACT:50u" MIN.NICKEL UNDER PLATING
OVER ALL.PLATING ON SOLDER AREA:SEE TABLE
GOLD PLATING ON CONTACT AREA:SEE TABLE
 - 2.2. PEG:50u" MIN. NICKEL UNDER PLATING OVER ALL.
80u" MIN. MATTE TIN PLATING ON SOLDER AREA.
3. HF COMPLIANT, RoHS COMPLIANT.
4. DATE CODE: XX XX XX

└─ DAY
└─ WEEK
└─ YEAR
5. MECHANICAL PERFORMANCE:
 - 5.1. DURABILITY: SEE TABLE
6. ELECTRICAL PERFORMANCE:
 - 6.1. CURRENT: 0.5A PER PIN.
 - 6.2. LLCR: INITIAL 55mΩ MAX.;FINAL ΔLLCR=20mΩ MAX.
7. IR REFLOW:
THE TEMPERATURE SHALL BE 260±5°C MAINTAINING 10±1 SECONDS.
8. PRODUCT NUMBER NOTE:



GENERAL TOLERANCES UNLESS SPECIFIED		PART NO.	LOTES			
X ± 0.35	X° ± 3°	SEE TABLE				
XX ± 0.25	X° ± 2°	APPROVED BY	TITLE 0.5 PITCH M.2 H4.2 (KEY E)			
XXX ± 0.15	.XX° ± 1°	Barney 11/17'14				
CUSTOMER DRAWING		CHECKED BY	DWG NO. AP-APCI0108			
		Vito 11/17'14				
SIZE	UNITS	DRAWN BY		SHEET	SCALE	REV
A4	MM [INCH]	Lxh 11/17'14		2 / 5	4:1	1A



COMPONENT HT. ALLOWABLE

0.90 Max
0.10 Min

1.40 ± 0.10

0.80 ± 0.08
1.10 ± 0.10

(4.20) Max Conn. HT.

4.55 Max RSS

TOP OF MB TO TOP OF MODULE

COMPONENT HT. ALLOWABLE

0.90 Max
0.10 Min

1.40 ± 0.10

0.80 ± 0.08
1.25 ± 0.10

(4.20) Max Conn. HT.

4.70 Max RSS

TOP OF MB TO TOP OF MODULE

COMPONENT HT. ALLOWABLE

0.90 Max
0.10 Min

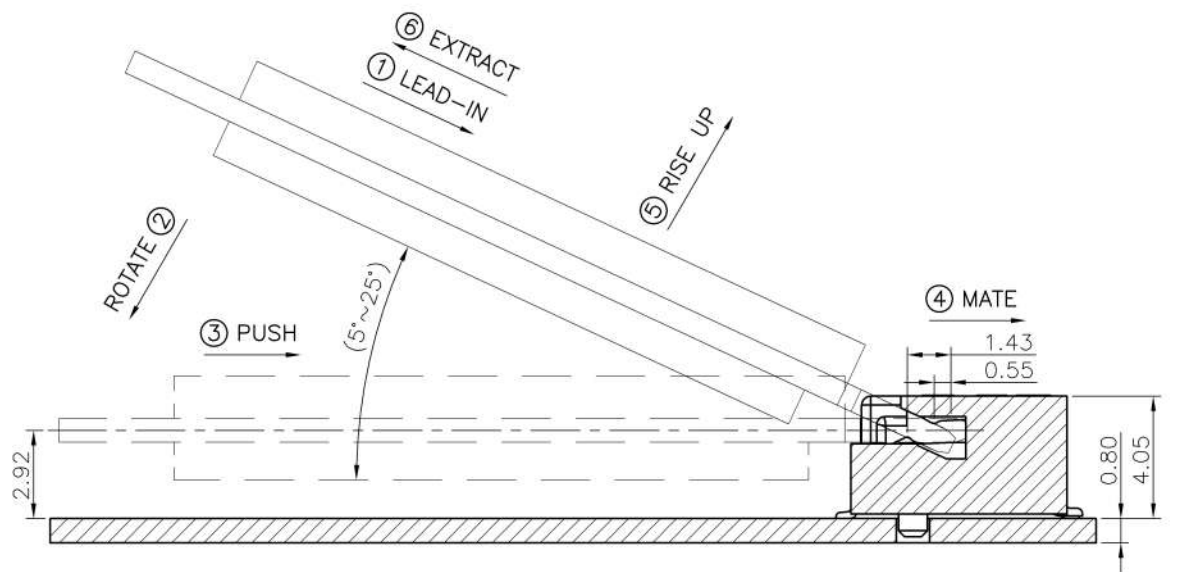
1.40 ± 0.10

0.80 ± 0.08
1.40 ± 0.10

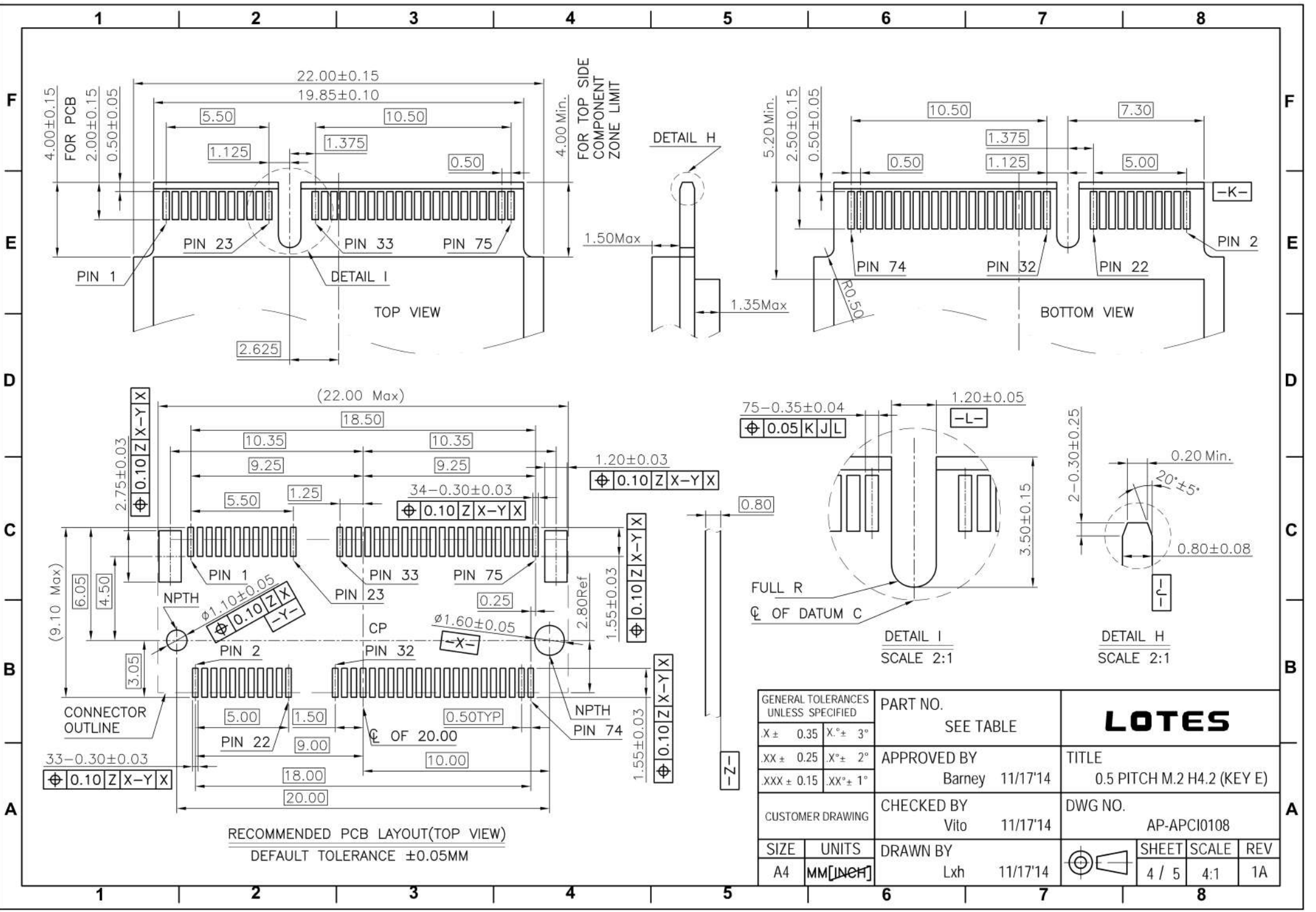
(4.20) Max Conn. HT.

4.85 Max RSS

TOP OF MB TO TOP OF MODULE

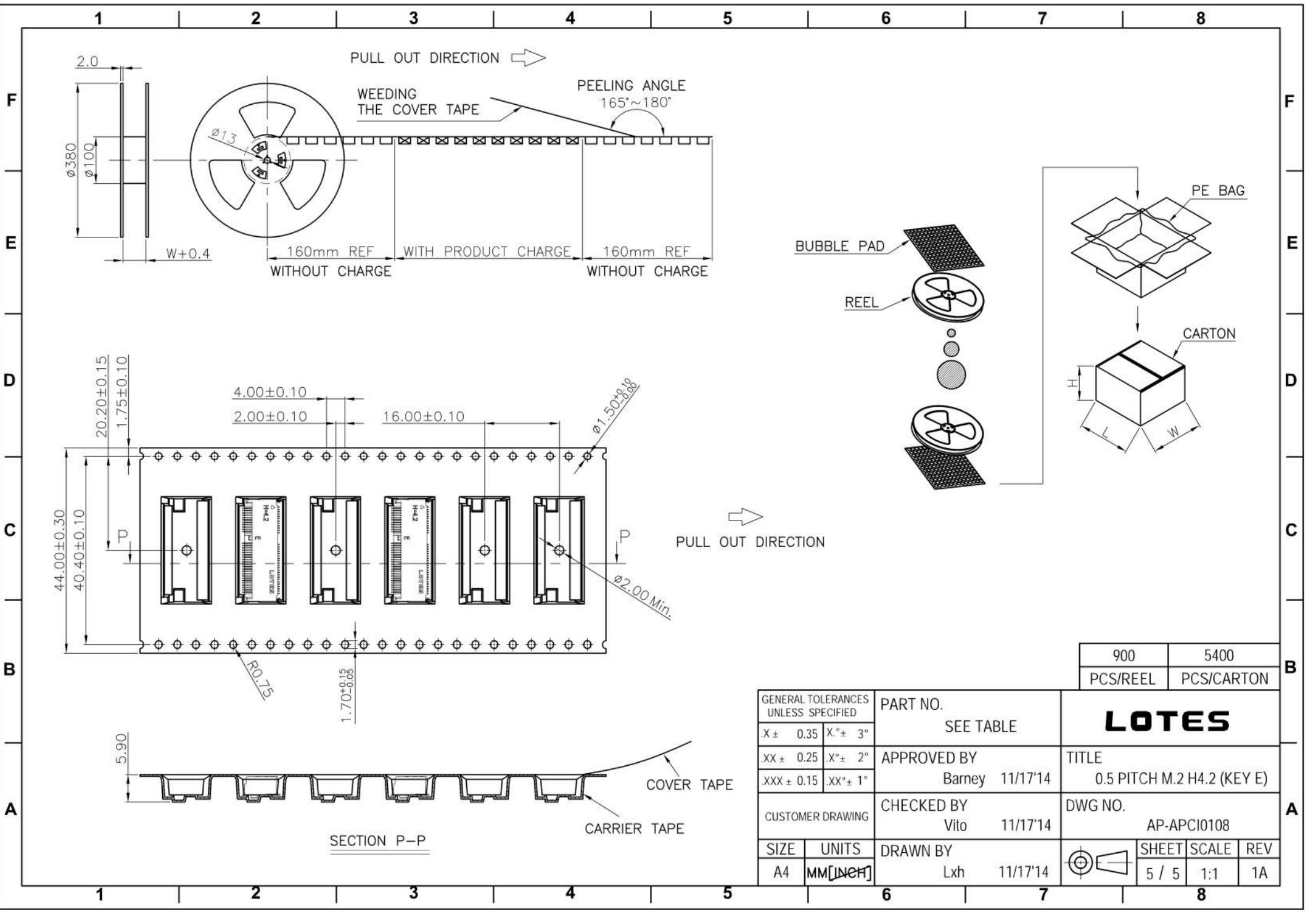


GENERAL TOLERANCES UNLESS SPECIFIED		PART NO.	LOTES			
X ± 0.35	X° ± 3°	SEE TABLE				
XX ± 0.25	.X° ± 2°	APPROVED BY	TITLE			
.XXX ± 0.15	.XX° ± 1°	Barney 11/17'14	0.5 PITCH M.2 H4.2 (KEY E)			
CUSTOMER DRAWING		CHECKED BY	DWG NO.			
		Vito 11/17'14	AP-APCI0108			
SIZE	UNITS	DRAWN BY		SHEET	SCALE	REV
A4	MM [INCH]	Lxh 11/17'14		3 / 5	4:1	1A



GENERAL TOLERANCES UNLESS SPECIFIED		PART NO.	LOTES			
X ± 0.35	X° ± 3°	SEE TABLE	TITLE			
XX ± 0.25	X° ± 2°	APPROVED BY	0.5 PITCH M.2 H4.2 (KEY E)			
XXX ± 0.15	XX° ± 1°	Barney 11/17'14	DWG NO.			
CUSTOMER DRAWING	CHECKED BY	Vito 11/17'14	AP-APCI0108			
SIZE	UNITS	DRAWN BY		SHEET	SCALE	REV
A4	MM [INCH]	Lxh 11/17'14		4 / 5	4:1	1A

RECOMMENDED PCB LAYOUT(TOP VIEW)
 DEFAULT TOLERANCE ±0.05MM



900	5400
PCS/REEL	PCS/CARTON

GENERAL TOLERANCES UNLESS SPECIFIED		PART NO.	LOTES			
SEE TABLE		SEE TABLE				
X ± 0.35	X.° ± 3°	APPROVED BY	TITLE			
XX ± 0.25	.X° ± 2°	Barney 11/17'14	0.5 PITCH M.2 H4.2 (KEY E)			
XXX ± 0.15	.XX° ± 1°	CHECKED BY	DWG NO.			
CUSTOMER DRAWING	Vito 11/17'14	AP-APCI0108				
SIZE	UNITS	DRAWN BY		SHEET	SCALE	REV
A4	MM [INCH]	Lxh 11/17'14		5 / 5	1:1	1A