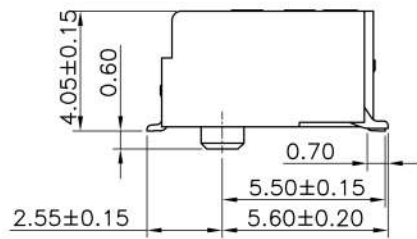
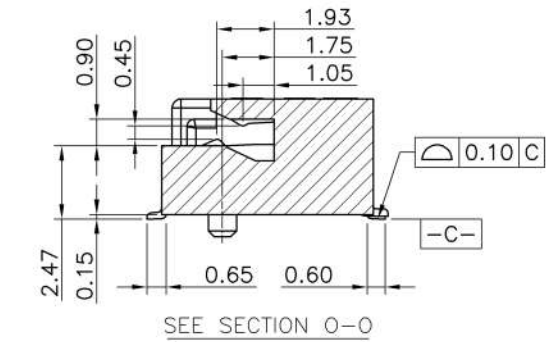
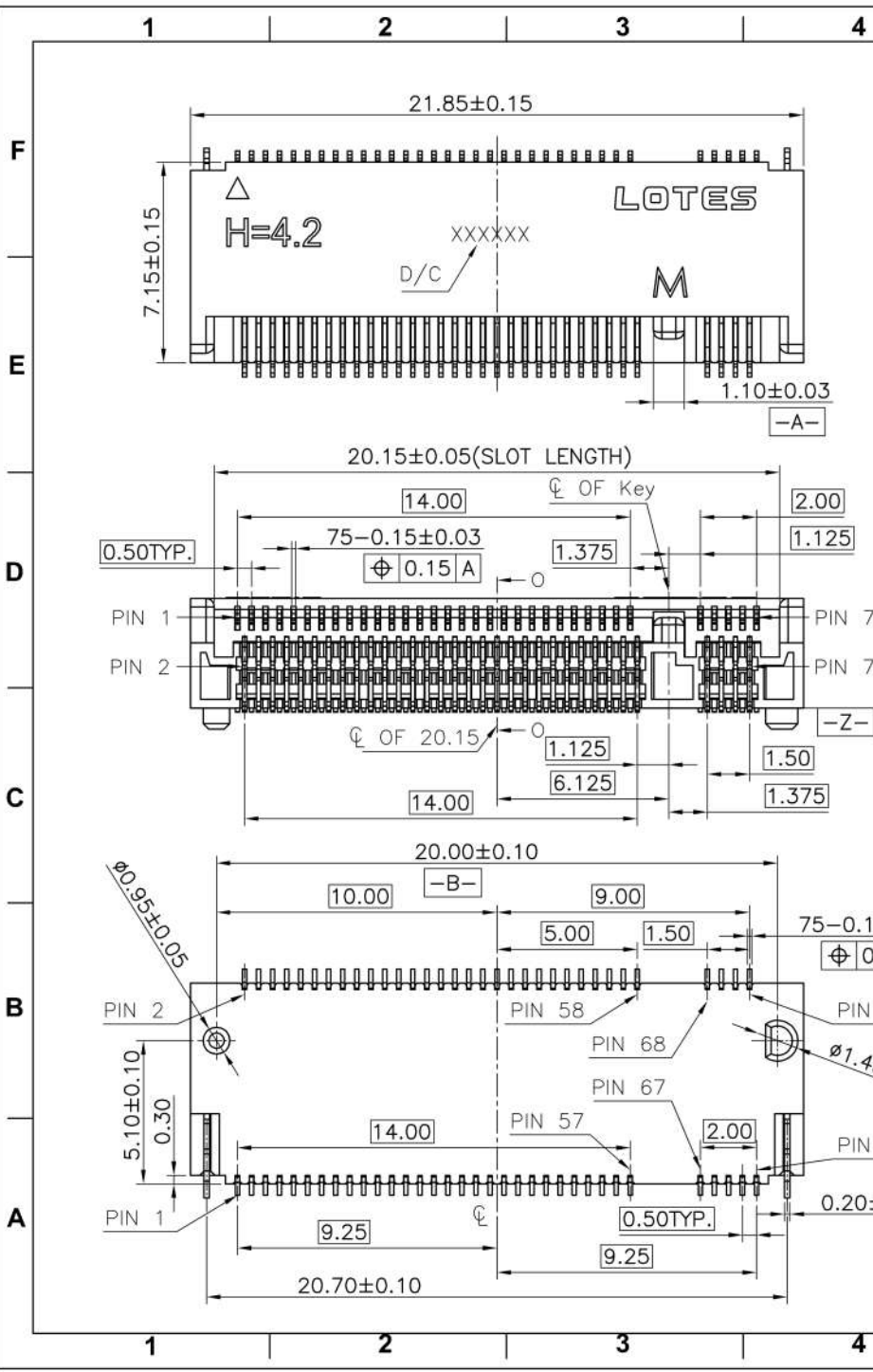


REV.	ECR/N NO./DESCRIPTION	DATE	DRAWN	CHECKED	APPROVE
1	SN14155	11/17'14	Lxh	Vito	Barney



GENERAL TOLERANCES UNLESS SPECIFIED		PART NO.	LOTES		
X ± 0.35	X° ± 3°	SEE TABLE	TITLE 0.5 PITCH M.2 H4.2 (KEY M)		
XX ± 0.25	.X° ± 2°	APPROVED BY Barney 11/17'14			
XXX ± 0.15	.XX° ± 1°	CHECKED BY Vito 11/17'14	DWG NO. AP-APCI0107		
CUSTOMER DRAWING		DRAWN BY Lxh 11/17'14	SHEET SCALE REV 1 / 5 4:1 1		

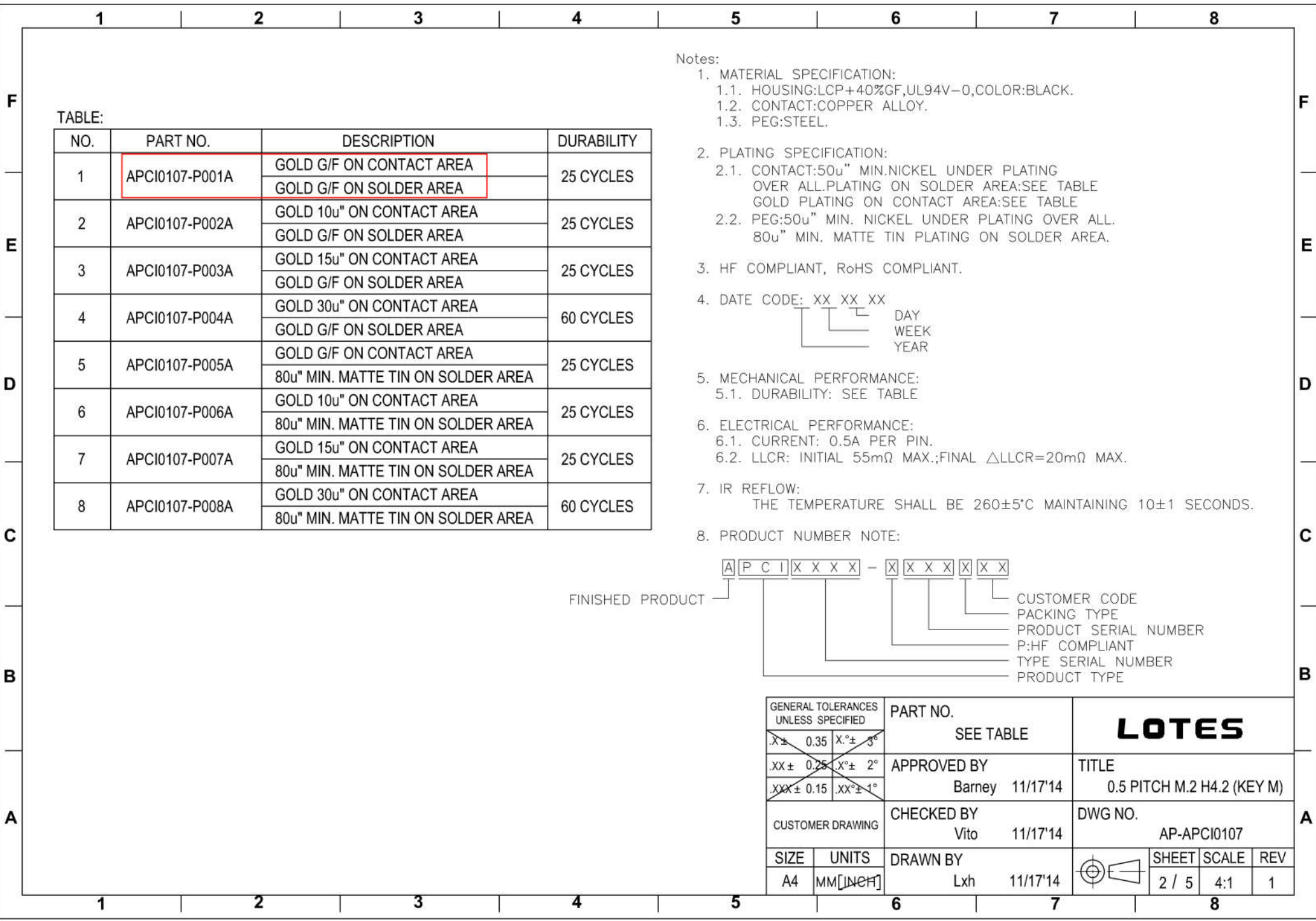


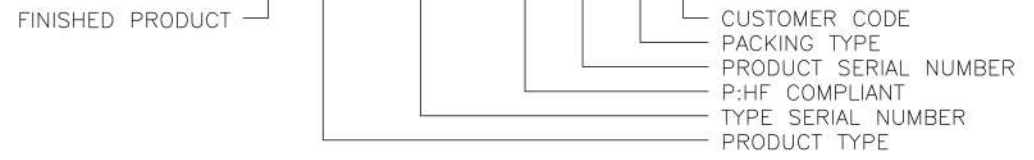
TABLE:

NO.	PART NO.	DESCRIPTION	DURABILITY
1	APCI0107-P001A	GOLD G/F ON CONTACT AREA	25 CYCLES
		GOLD G/F ON SOLDER AREA	
2	APCI0107-P002A	GOLD 10u" ON CONTACT AREA	25 CYCLES
		GOLD G/F ON SOLDER AREA	
3	APCI0107-P003A	GOLD 15u" ON CONTACT AREA	25 CYCLES
		GOLD G/F ON SOLDER AREA	
4	APCI0107-P004A	GOLD 30u" ON CONTACT AREA	60 CYCLES
		GOLD G/F ON SOLDER AREA	
5	APCI0107-P005A	GOLD G/F ON CONTACT AREA	25 CYCLES
		80u" MIN. MATTE TIN ON SOLDER AREA	
6	APCI0107-P006A	GOLD 10u" ON CONTACT AREA	25 CYCLES
		80u" MIN. MATTE TIN ON SOLDER AREA	
7	APCI0107-P007A	GOLD 15u" ON CONTACT AREA	25 CYCLES
		80u" MIN. MATTE TIN ON SOLDER AREA	
8	APCI0107-P008A	GOLD 30u" ON CONTACT AREA	60 CYCLES
		80u" MIN. MATTE TIN ON SOLDER AREA	

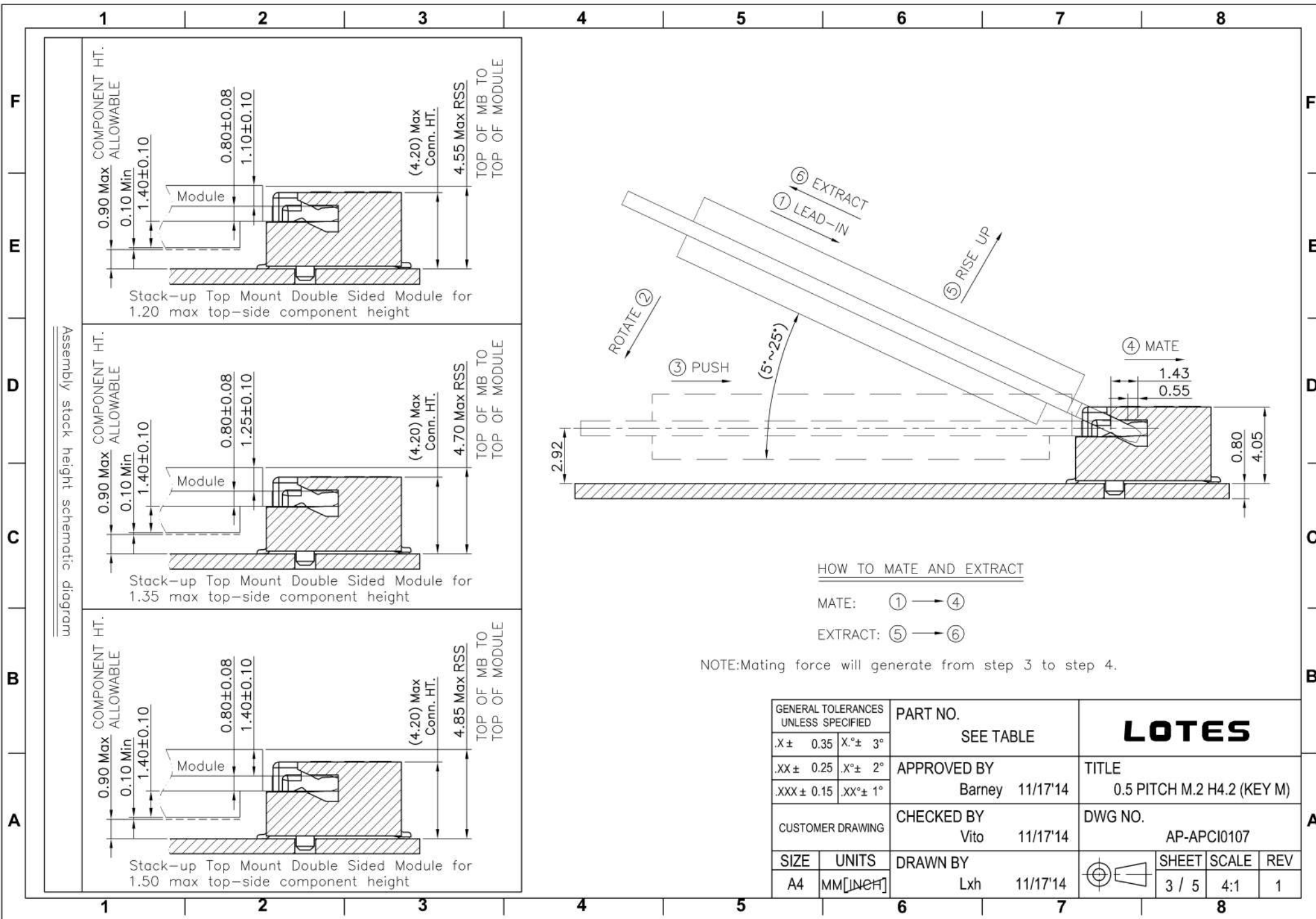
- Notes:
- MATERIAL SPECIFICATION:
 - HOUSING:LCP+40%GF,UL94V-0,COLOR:BLACK.
 - CONTACT:COPPER ALLOY.
 - PEG:STEEL.
 - PLATING SPECIFICATION:
 - CONTACT:50u" MIN.NICKEL UNDER PLATING OVER ALL.PLATING ON SOLDER AREA:SEE TABLE GOLD PLATING ON CONTACT AREA:SEE TABLE
 - PEG:50u" MIN. NICKEL UNDER PLATING OVER ALL. 80u" MIN. MATTE TIN PLATING ON SOLDER AREA.
 - HF COMPLIANT, RoHS COMPLIANT.
 - DATE CODE: XX XX XX
 - MECHANICAL PERFORMANCE:
 - DURABILITY: SEE TABLE
 - ELECTRICAL PERFORMANCE:
 - CURRENT: 0.5A PER PIN.
 - LLCR: INITIAL 55mΩ MAX.;FINAL ΔLLCR=20mΩ MAX.
 - IR REFLOW:

THE TEMPERATURE SHALL BE 260±5°C MAINTAINING 10±1 SECONDS.
 - PRODUCT NUMBER NOTE:

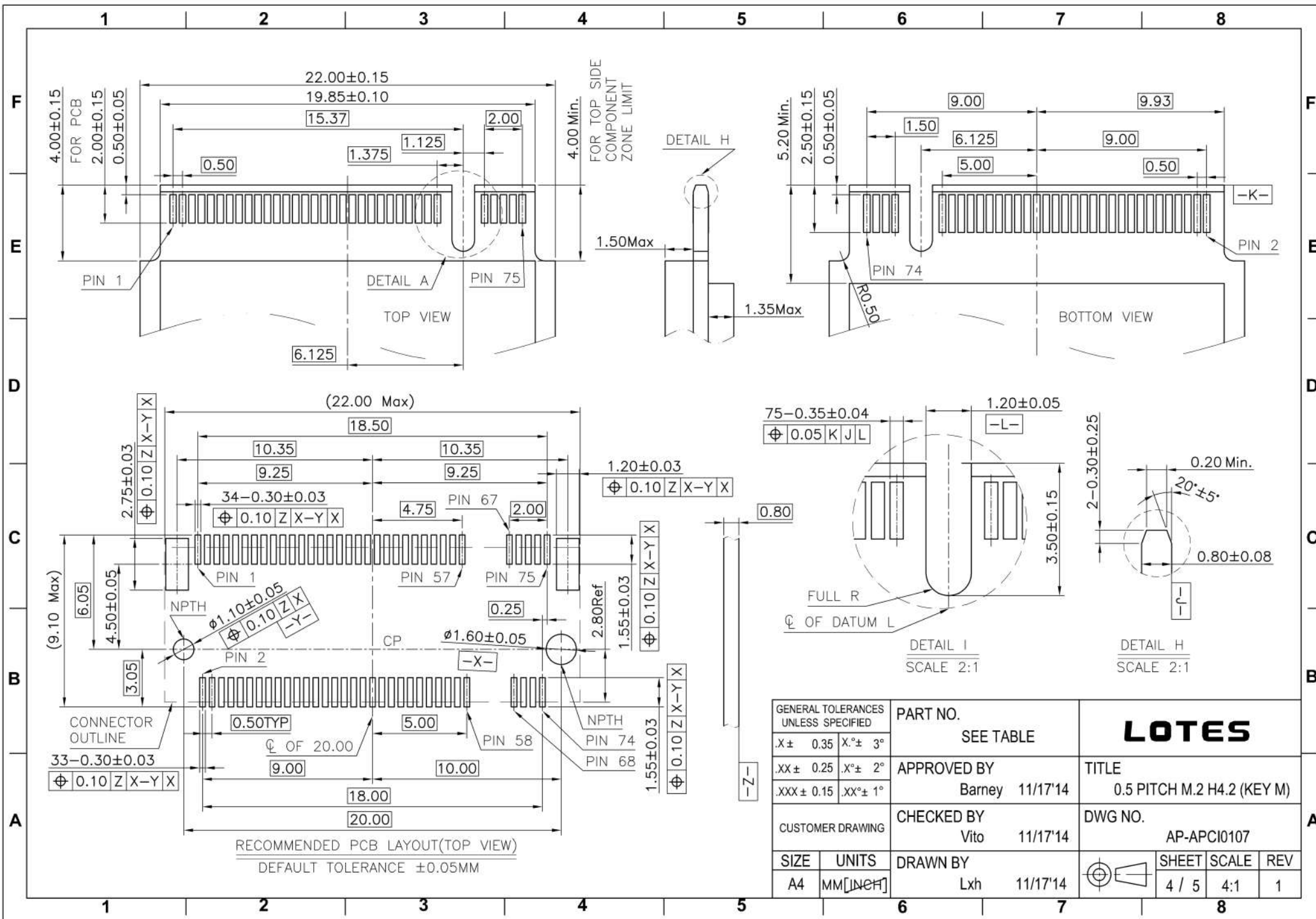
APCI XXXX - XXXX XX



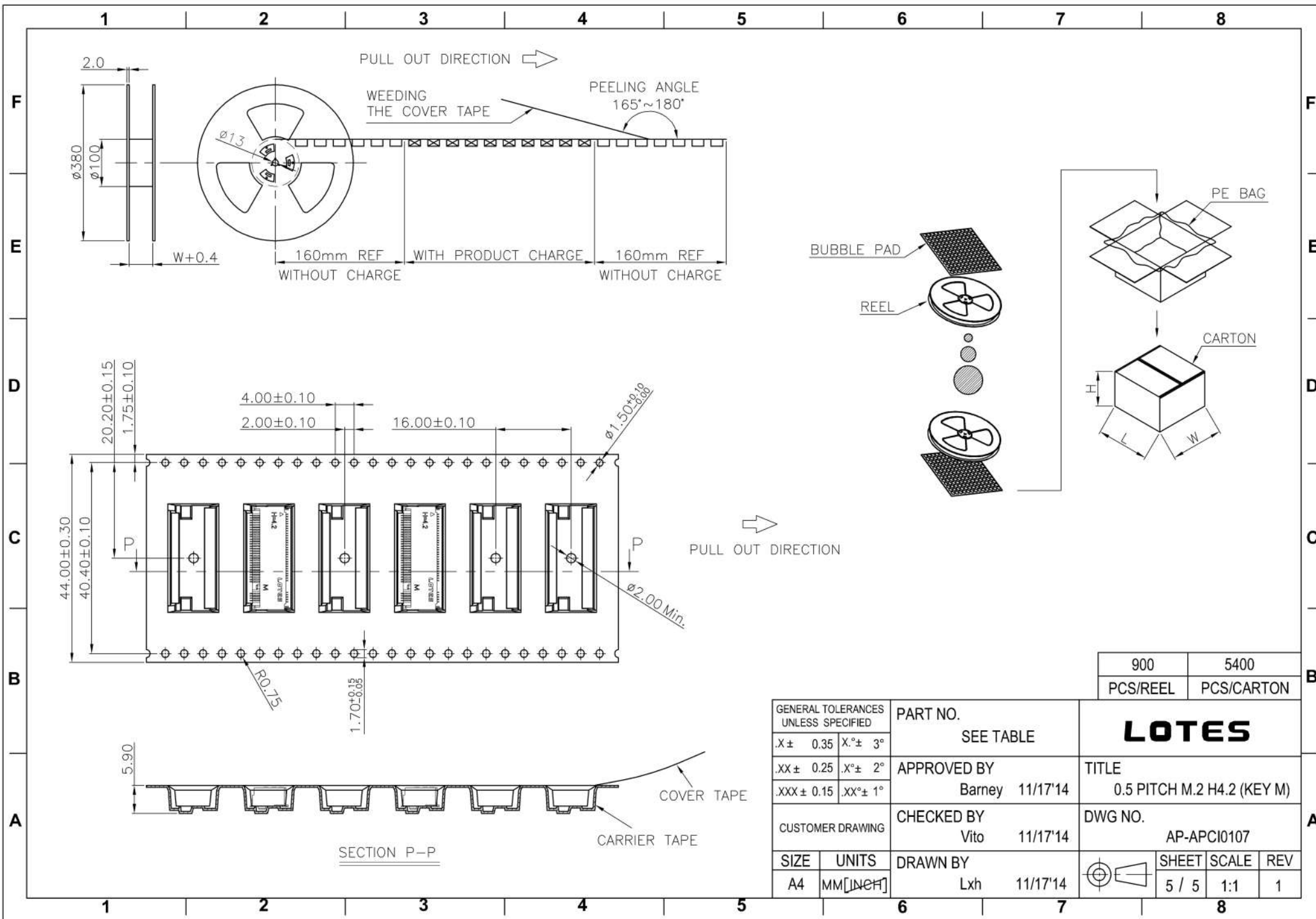
GENERAL TOLERANCES UNLESS SPECIFIED		PART NO.	LOTES			
X ± 0.35	X ° ± 3°	SEE TABLE				
.XX ± 0.25	X ° ± 2°	APPROVED BY	TITLE 0.5 PITCH M.2 H4.2 (KEY M)			
.XXX ± 0.15	.XX ° ± 1°	Barney 11/17'14				
CUSTOMER DRAWING		CHECKED BY	DWG NO. AP-APCI0107			
		Vito 11/17'14				
SIZE	UNITS	DRAWN BY		SHEET	SCALE	REV
A4	MM[INCH]	Lxh 11/17'14		2 / 5	4:1	1



GENERAL TOLERANCES UNLESS SPECIFIED		PART NO. SEE TABLE	LOTES			
X ± 0.35	X° ± 3°					APPROVED BY Barney 11/17'14
.XX ± 0.25	.X° ± 2°		CHECKED BY Vito 11/17'14	DWG NO. AP-APCI0107		
XXX ± 0.15	.XX° ± 1°	CUSTOMER DRAWING	DRAWN BY Lxh 11/17'14	REV		
SIZE A4	UNITS MM [INCH]			SHEET 3 / 5	SCALE 4:1	REV 1



GENERAL TOLERANCES UNLESS SPECIFIED		PART NO.	LOTES			
X± 0.35	X°± 3°	SEE TABLE				
.XX± 0.25	.X°± 2°	APPROVED BY	TITLE			
.XXX± 0.15	.XX°± 1°	Barney 11/17'14	0.5 PITCH M.2 H4.2 (KEY M)			
CUSTOMER DRAWING		CHECKED BY	DWG NO.			
		Vito 11/17'14	AP-APCI0107			
SIZE	UNITS	DRAWN BY		SHEET	SCALE	REV
A4	MM [INCH]	Lxh 11/17'14		4 / 5	4:1	1



900	5400
PCS/REEL	PCS/CARTON

GENERAL TOLERANCES UNLESS SPECIFIED		PART NO. SEE TABLE	LOTES			
X ± 0.35	X.° ± 3°					
.XX ± 0.25	.X.° ± 2°	APPROVED BY Barney 11/17'14	TITLE 0.5 PITCH M.2 H4.2 (KEY M)			
.XXX ± 0.15	.XX.° ± 1°	CHECKED BY Vito 11/17'14	DWG NO. AP-APCI0107			
CUSTOMER DRAWING		DRAWN BY Lxh 11/17'14		SHEET	SCALE	REV
SIZE A4	UNITS MM [INCH]			5 / 5	1:1	1