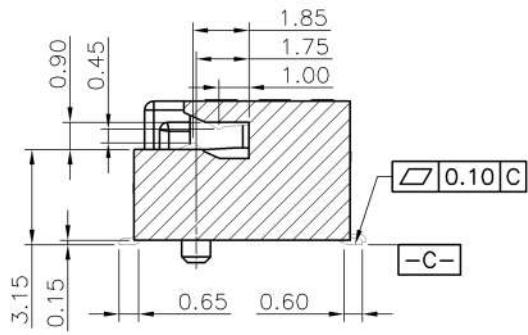
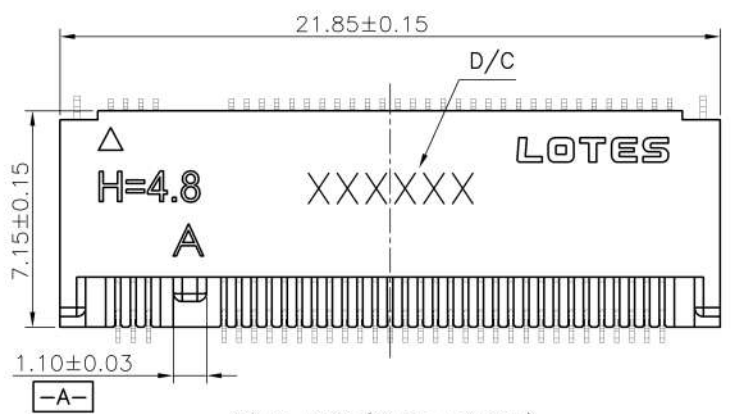


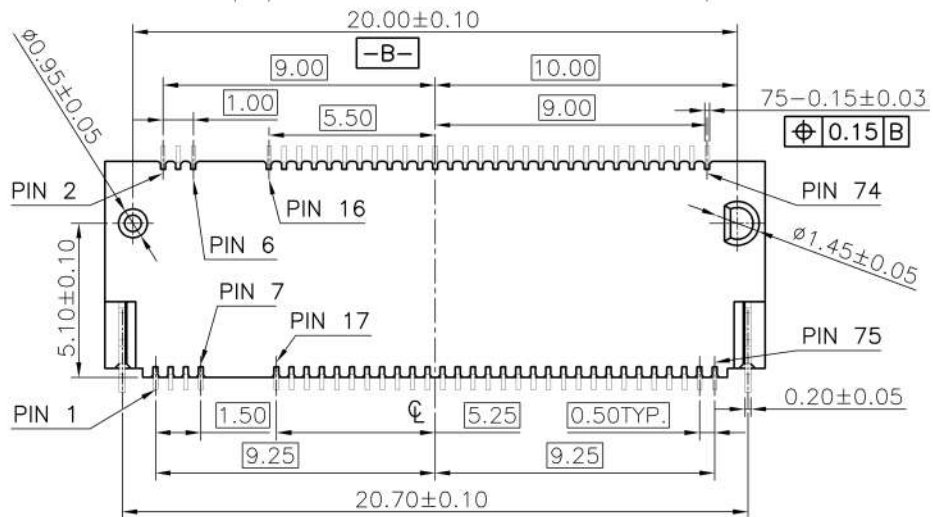
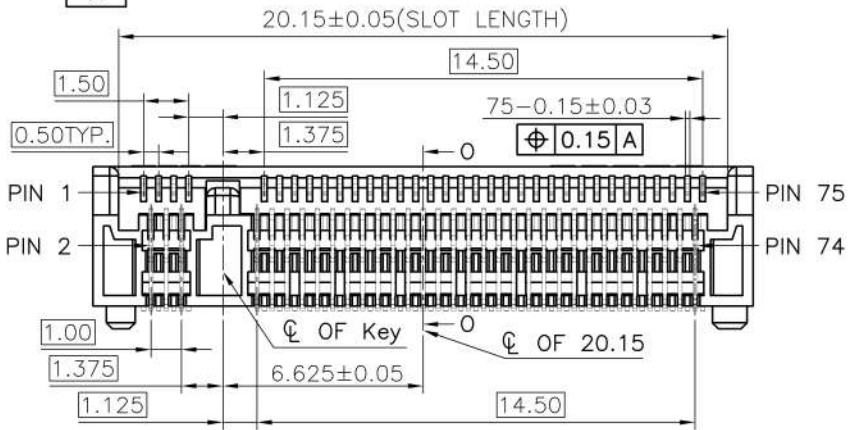
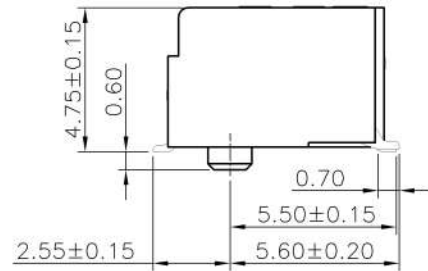
REV.	ECR/N NO./DESCRIPTION	DATE	DRAWN	CHECKED	APPROVE
1	SN15037	04/29'15	Lxh	Vito	Barney

F
E
D
C
B
A

F
E
D
C
B
A



SEE SECTION O-O



GENERAL TOLERANCES UNLESS SPECIFIED		PART NO.	LOTES						
X ± 0.35	X° ± 3°	SEE TABLE							
XX ± 0.25	.X° ± 2°	APPROVED BY Barney	TITLE 0.5MM PITCH M.2 H4.8 (KEY A)						
XXX ± 0.15	.XX° ± 1°	CHECKED BY Vito	DWG NO. AP-APCI0102						
CUSTOMER DRAWING		DRAWN BY Lxh	<table border="1"> <tr> <th>SHEET</th> <th>SCALE</th> <th>REV</th> </tr> <tr> <td>1 / 5</td> <td>4:1</td> <td>1</td> </tr> </table>	SHEET	SCALE	REV	1 / 5	4:1	1
SHEET	SCALE	REV							
1 / 5	4:1	1							
SIZE A4	UNITS MM [INCH]								

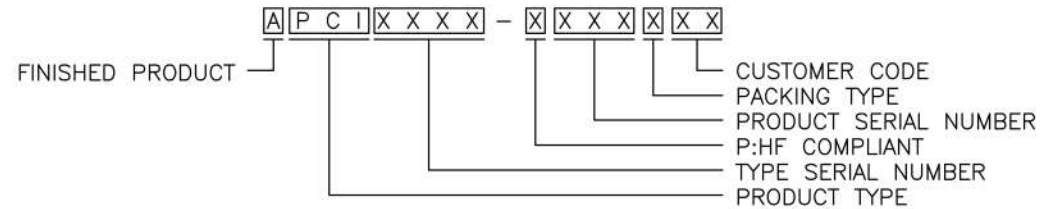
1 2 3 4 5 6 7 8

TABLE:

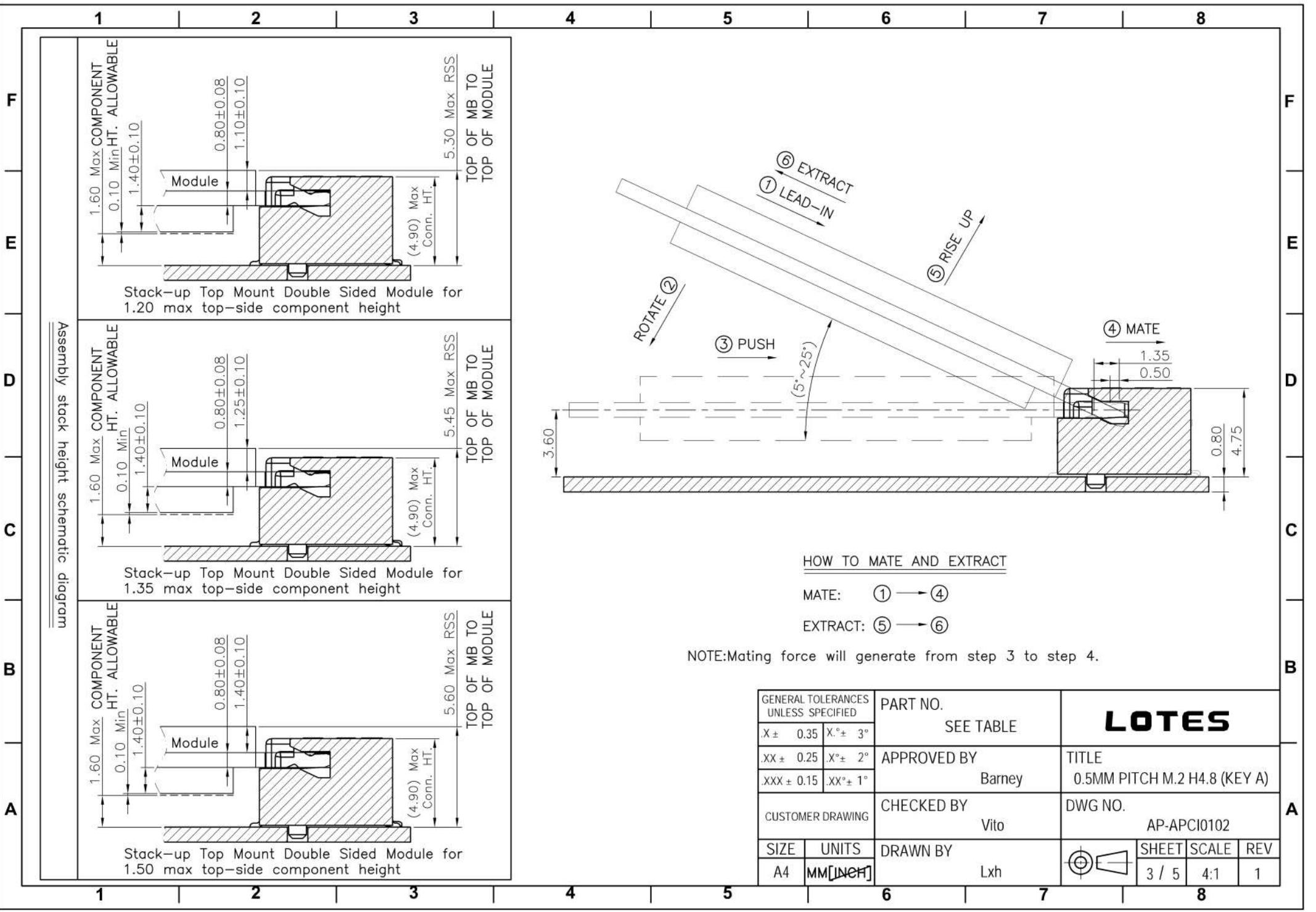
NO.	PART NO.	DESCRIPTION	DURABILITY
1	APCI0102-P001A	GOLD G/F ON CONTACT AREA	25 CYCLES
		GOLD G/F ON SOLDER AREA	
2	APCI0102-P002A	GOLD 10u" ON CONTACT AREA	25 CYCLES
		GOLD G/F ON SOLDER AREA	
3	APCI0102-P003A	GOLD 15u" ON CONTACT AREA	25 CYCLES
		GOLD G/F ON SOLDER AREA	
4	APCI0102-P004A	GOLD 30u" ON CONTACT AREA	60 CYCLES
		GOLD G/F ON SOLDER AREA	

Notes:

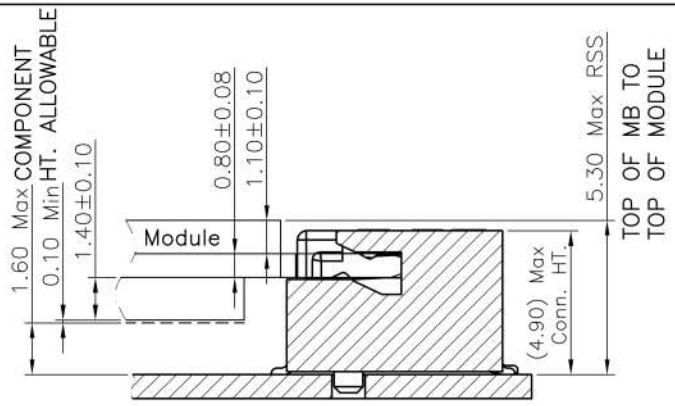
- MATERIAL SPECIFICATION:
 - HOUSING:LCP+40%GF,UL94V-0,COLOR:BLACK.
 - CONTACT:COPPER ALLOY.
 - PEG:STEEL.
- PLATING SPECIFICATION:
 - CONTACT:50u" MIN.NICKEL UNDER PLATING
OVER ALL.PLATING ON SOLDER AREA:SEE TABLE
GOLD PLATING ON CONTACT AREA:SEE TABLE
 - PEG:50u" MIN. NICKEL UNDER PLATING OVER ALL.
80u" MIN. MATTE TIN PLATING ON SOLDER AREA.
- HF COMPLIANT, RoHS COMPLIANT.
- DATE CODE: XX XX XX
 DAY
 WEEK
 YEAR
- MECHANICAL PERFORMANCE:
 - DURABILITY: SEE TABLE
- ELECTRICAL PERFORMANCE:
 - CURRENT: 0.5A PER PIN.
 - LLCR: INITIAL 55mΩ MAX.;FINAL ΔLLCR=20mΩ MAX.
- IR REFLOW:
THE TEMPERATURE SHALL BE 260±5°C MAINTAINING 10±1 SECONDS.
- PRODUCT NUMBER NOTE:



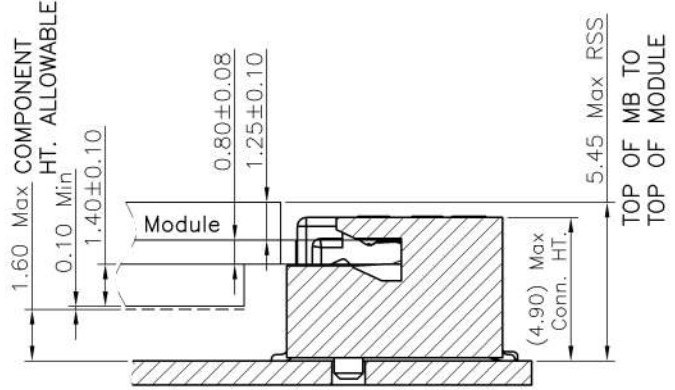
GENERAL TOLERANCES UNLESS SPECIFIED		PART NO.	LOTES			
X ± 0.35	X° ± 3°	SEE TABLE	TITLE			
XX ± 0.25	XX° ± 2°	APPROVED BY	0.5MM PITCH M.2 H4.8 (KEY A)			
XXX ± 0.15	XXX° ± 1°	Barney	DWG NO.			
CUSTOMER DRAWING	CHECKED BY	Vito	AP-APCI0102			
SIZE	UNITS	DRAWN BY		SHEET	SCALE	REV
A4	MM [INCH]	Lxh		2 / 5	4:1	1



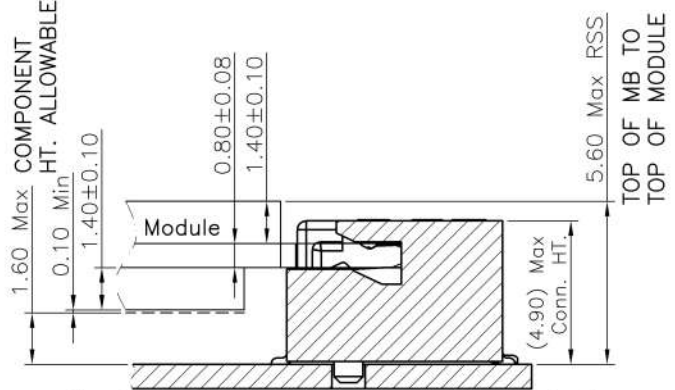
Assembly stack height schematic diagram



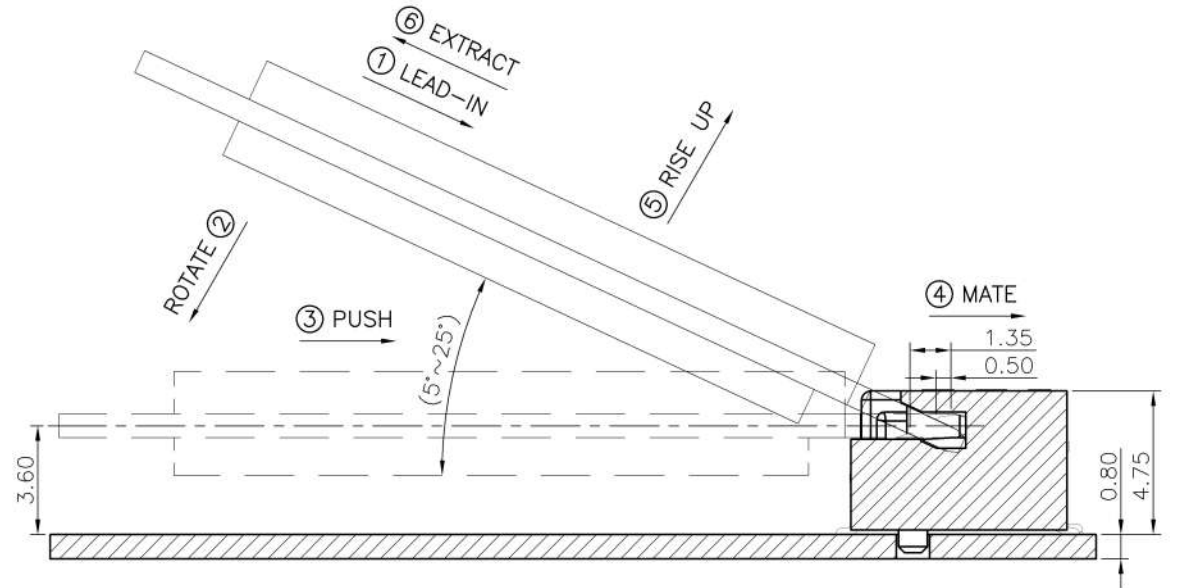
Stack-up Top Mount Double Sided Module for 1.20 max top-side component height



Stack-up Top Mount Double Sided Module for 1.35 max top-side component height



Stack-up Top Mount Double Sided Module for 1.50 max top-side component height



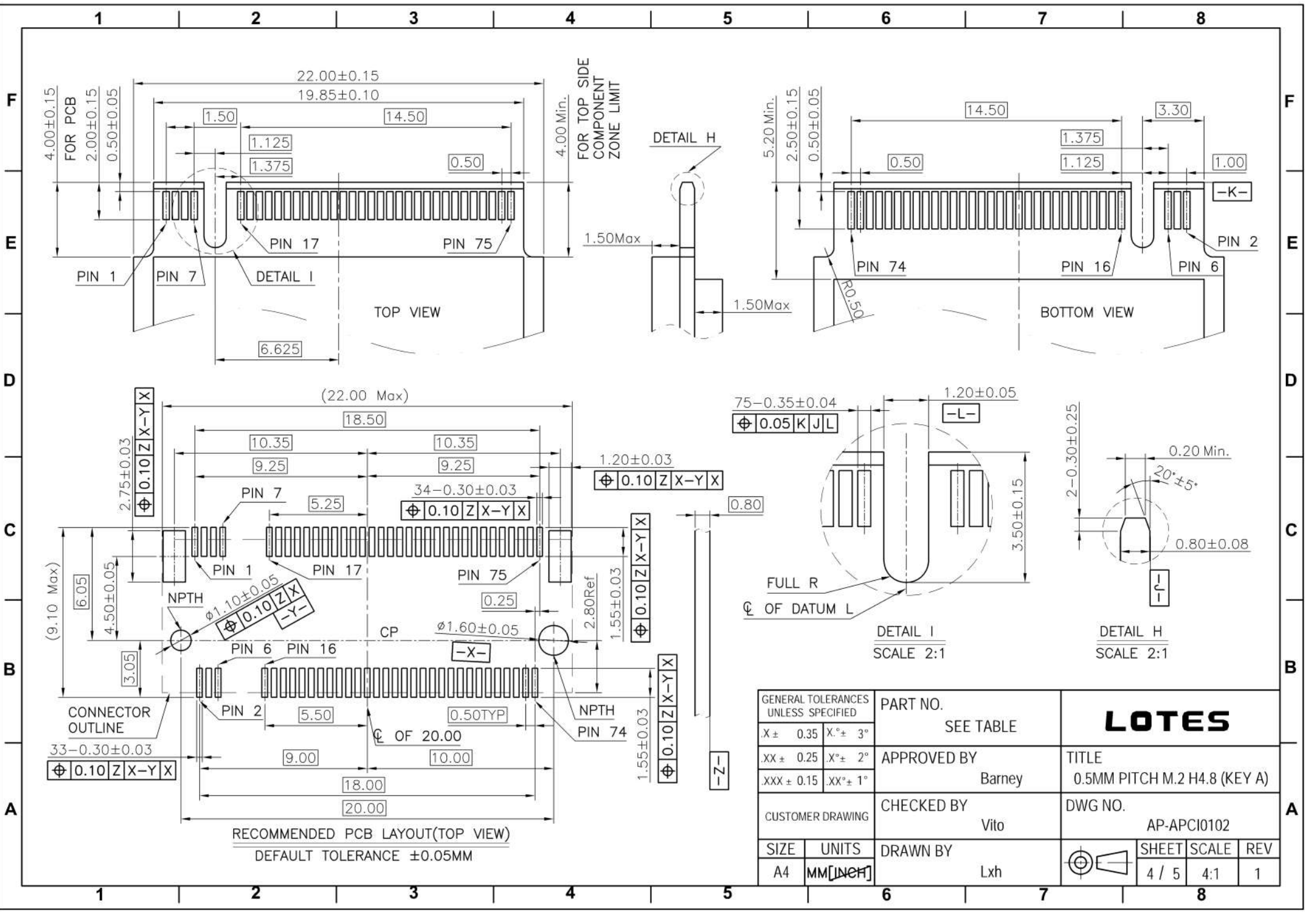
HOW TO MATE AND EXTRACT

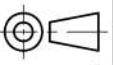
MATE: ① → ④

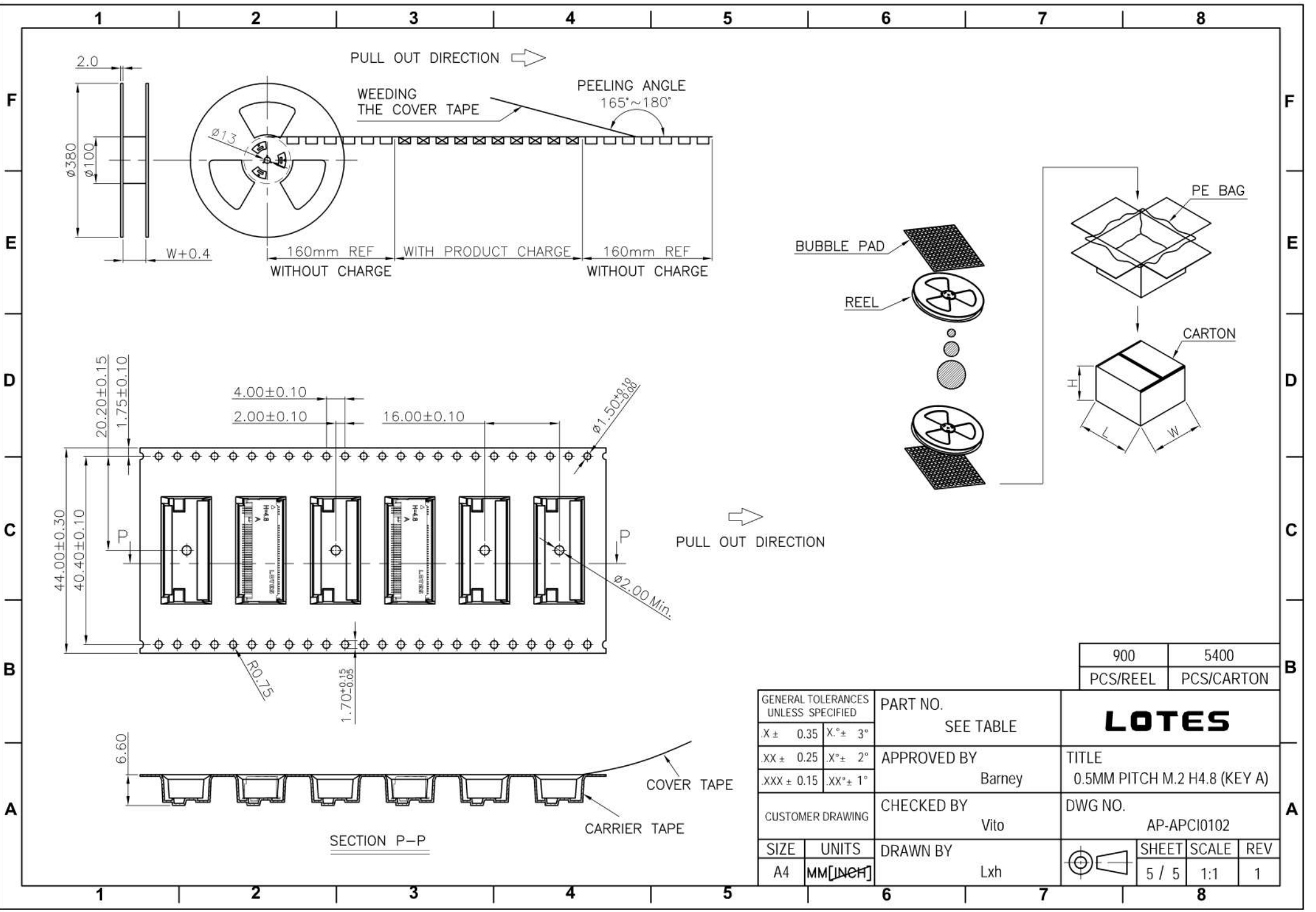
EXTRACT: ⑤ → ⑥

NOTE: Mating force will generate from step 3 to step 4.

GENERAL TOLERANCES UNLESS SPECIFIED		PART NO.	LOTES			
X ± 0.35	X° ± 3°	SEE TABLE				
XX ± 0.25	.X° ± 2°	APPROVED BY	TITLE			
.XXX ± 0.15	.XX° ± 1°	Barney	0.5MM PITCH M.2 H4.8 (KEY A)			
CUSTOMER DRAWING		CHECKED BY	DWG NO.			
		Vito	AP-APCI0102			
SIZE	UNITS	DRAWN BY		SHEET	SCALE	REV
A4	MM [INCH]	Lxh		3 / 5	4:1	1



GENERAL TOLERANCES UNLESS SPECIFIED		PART NO.	LOTES			
SEE TABLE		SEE TABLE				
X ± 0.35	X° ± 3°	APPROVED BY	TITLE			
XX ± 0.25	X° ± 2°	Barney	0.5MM PITCH M.2 H4.8 (KEY A)			
XXX ± 0.15	XX° ± 1°	CHECKED BY	DWG NO.			
CUSTOMER DRAWING		Vito	AP-APCI0102			
SIZE	UNITS	DRAWN BY		SHEET	SCALE	REV
A4	MM [INCH]	Lxh		4 / 5	4:1	1



900	5400
PCS/REEL	PCS/CARTON

GENERAL TOLERANCES UNLESS SPECIFIED		PART NO.	LOTES			
SEE TABLE		SEE TABLE				
X ± 0.35	X.° ± 3°	APPROVED BY	TITLE			
XX ± 0.25	.X° ± 2°	Barney	0.5MM PITCH M.2 H4.8 (KEY A)			
.XXX ± 0.15	.XX° ± 1°	CHECKED BY	DWG NO.			
CUSTOMER DRAWING	Vito	AP-APCI0102				
SIZE	UNITS	DRAWN BY		SHEET	SCALE	REV
A4	MM [INCH]	Lxh		5 / 5	1:1	1