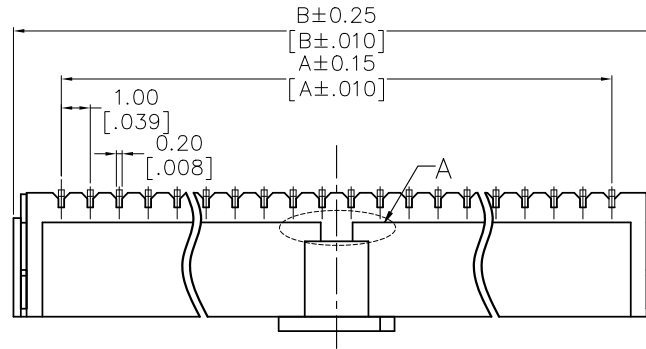


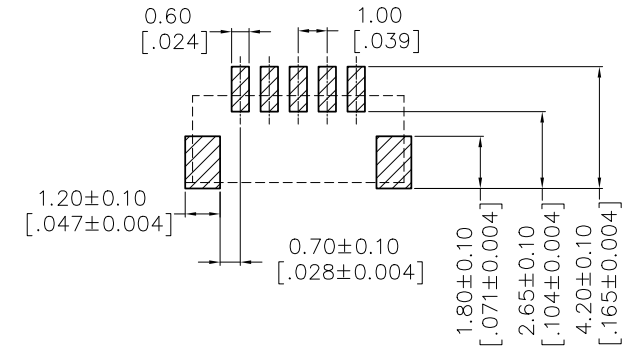
# HSF

Current Rating: 1.0A AC/DC  
 Contact Resistance: 20milliohm Max  
 Insulation Resistance: 100Megohm Min  
 Withstand Voltage: 250V AC/minute  
 Operation Temperature: -25°C to +75°C

Housing Material: PA9T+30%GF(UL94V-0)  
 Contact Material: Copper alloy  
 Contact plating: Sn over Ni Plating  
 02-06Pin without slot "A"



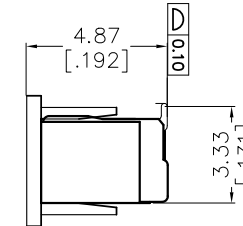
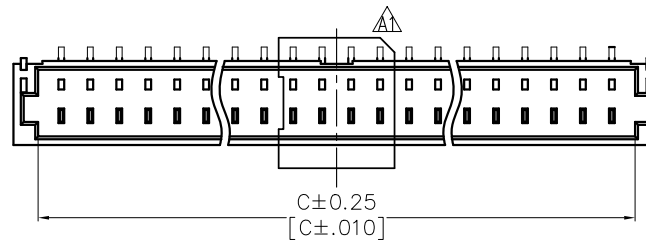
RECOMMENDED PCB LAYOUT  
 TOLERANCE IS  $\pm 0.05$



## Ordering Information

WF1001A-WMXXER1

No. of Pins: 2P~20P  
 Insulator Color: E=Beige  
 Packing: R=Tape & Reel



Ordering Information & Dimensions:

Part No.	Dimension		
	A	B	C
WF1001A-WM02ER1	1.00	4.30	2.60
WF1001A-WM03ER1	2.00	5.30	3.60
WF1001A-WM04ER1	3.00	6.30	4.60
WF1001A-WM05ER1	4.00	7.30	5.60
WF1001A-WM06ER1	5.00	8.30	6.60
WF1001A-WM07ER1	6.00	9.30	7.60
WF1001A-WM08ER1	7.00	10.30	8.60
WF1001A-WM09ER1	8.00	11.30	9.60
WF1001A-WM10ER1	9.00	12.30	10.60
WF1001A-WM11ER1	10.00	13.30	11.60
WF1001A-WM12ER1	11.00	14.30	12.60
WF1001A-WM13ER1	12.00	15.30	13.60
WF1001A-WM14ER1	13.00	16.30	14.60
WF1001A-WM15ER1	14.00	17.30	15.60
WF1001A-WM16ER1	15.00	18.30	16.60
WF1001A-WM17ER1	16.00	19.30	17.60
WF1001A-WM18ER1	17.00	20.30	18.60
WF1001A-WM19ER1	18.00	21.30	19.60
WF1001A-WM20ER1	19.00	22.30	20.60

REV	DATE	MODIFICATION DESCRIPTION	CHANGE	OPERATION	DRAW	DATE	SCALE	FIT	PART NO.	 <a href="http://www.wcon.com">Http: www.wcon.com</a> WCON-Dongguan Tel: +86 769 85358920 WCON-Kunshan Tel: +86 512 57468408 Fax: +86 769 85358915 E-mail: sales@wcon.com
				X.X	Ding	2018/11/21	UNIT	mm	WF1001A-WMXXER1	
A1	2018/11/21	Modify the CAP		X.XX	CHECK	DATE	SIZE	A4	TITLE:	
A0	2013/12/23	NEW		X.XXX	APPROVE	DATE	SHEET	1/1	J SH 1.0mm Wafer 180度SMT	
				Angle			PROJ.		Customer NO.	