

符合泰康"环境相关物质管理规定GP001"

NOTE:

- MATERIAL:
  - HOUSING: HIGH TEMP.THERMOPLASTIC, UL 94V-0
  - COLOR: BLACK.
  - CONTACT: COPPER ALLOY, THICKNESS=0.20MM
  - SHELL: SEE PART NO., THICKNESS=0.50MM
- FINISH:
  - CONTACT: GOLD PLATING ON CONTACT AREA SEE NOTE
  - 80u"MIN ,MATTE TIN PLATED ON SOLDER TAILS
  - 50u" MIN. NICKEL UNDER PLATED OVER ALL
  - SHELL: 50u" MIN. NICKEL OR GOLD PLATED OVER ALL
- MECHANICAL CHARACTERISTICS
  - INSERTION FORCE: 44.1N MAX
  - EXTROCTION FORCE: 9.8N MIN, 39.2N MAX
  - MATING CYCLE:10000 CYCLES
- ELECTRICAL CHARACTERISTICS
  - RATING CURRENT: 0.5A
  - RATING VOLTAGE: 40V
  - CONTACT RESISTANCE: 10 MILLOHMS OHMS MAX (EXCLUDING CONDUCTOR RESISTANCE)
  - INSULATION RESISTANCE:
    - a, UNMATED: 100M OHMS MIN AT 500 VDC
    - b, MATED: 10M OHMS MIN AT 150 VDC
  - DIELECTRIC WITHSTANDING VOLTAGE: 300V AC/1MINUTE
  - OPERATING TEMPERATURE: -20°C--+85°C
  - STORAGE TEMPERATURE: -20°C--+65°C

PART NO. INFORMATION:

FORM A:ASS'y  
 SERIES 11:HDMI-A/F  
 NUMBER OF POS. 19  
 FOLLOW NO. 92

PART NO. A111992-\*\*-\*\*-\*

PACKING TYPE  
 T: TRAY  
 R: TAPE REEL


CONTACT AREA PLATING  
 01:Au 1u"  
 03:Au 3u"  
 05:Au 5u"  
 10:Au 10u"  
 15:Au 15u"  
 30:Au 30u"

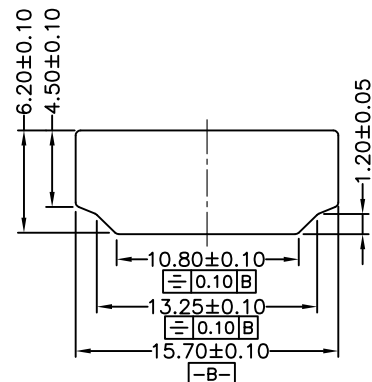
DIFFERENCE TYPE.

C: SHELL'S SOLDER DIP IS 1.50mm; AND NICKEL PLATED.

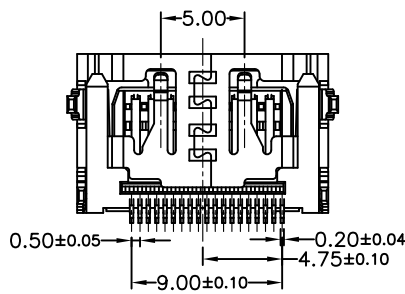
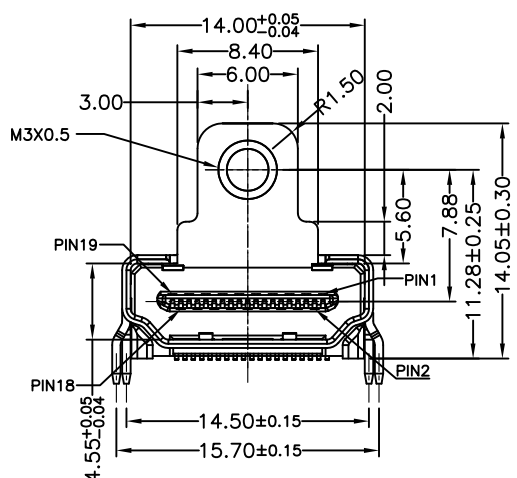
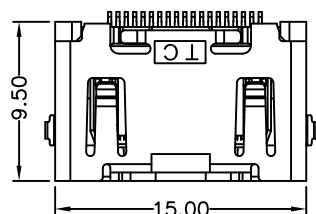
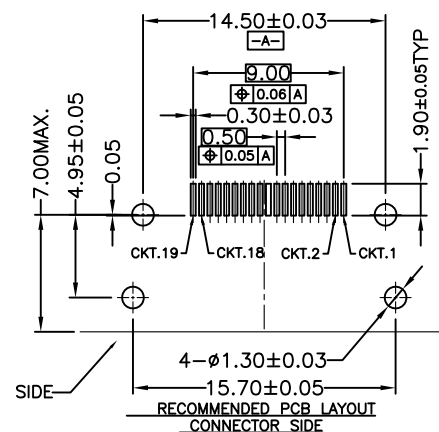
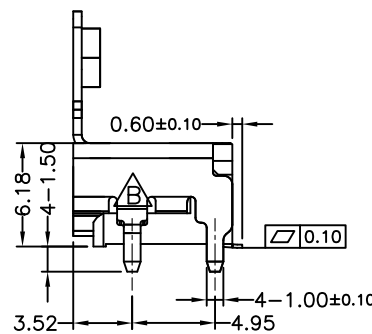
D: SHELL'S SOLDER DIP IS 1.50mm; AND GOLD PLATED.

03	CONTACT	T111989-A-XX-A	C2680 T=0.20	GOLD PLATING ON CONTACT AREA SEE PART NO. 80u"MIN MATTE TIN PLATED ON SOLDER TAILS 50u" MIN. NICKEL UNDER PLATED OVER ALL	1SET
02	SHELL	K111992-D-0N-A K111992-D-0G-A	SPCC T=0.50	NICKEL 50u" Min. 50u" MIN. NICKEL UNDER PLATED AND GOLD FLASH OVER ALL.	1
01	MOLDING	B111989-A-XX-A	LCP+30%/F	UL94V-0 BLACK	1
NO.	NAME	PART NO.	MATERIAL	FINISH/COLOR	Q' TY

X. ±	APPD:	Knight. Zhang	TITLE:	 泰康电子 TECON 客户图
.X ± 0.25	CHKD:		HDMI-A-19P-F/Short/With Screw Connector Customer	
.XX ± 0.20	DR:	Ba Jin	PART NO:	
.XXX ±			A111992-C(D)-**-*	
X* ± 2"			DWG NO:	
.X* ± 1.5"			C-A111992-C(D)-**-*	
	UNITS:	SCALE:	DWG NO:	
	mm	1:1	C-A111992-C(D)-**-*	
			客户图	SHEET:10F1
				REV: B



RECOMMENDED PANEL CUT OUT DIMENSION



B	TE2012-0518	取消侧面弹片	2012/10/30
A	TE2012-0357	初版发行	2012/08/02
REV	ECN NO	DESCRIPTION	DATE