

符合泰康“环境相关物质管理规定GP001”

NOTE:

- MATERIAL:
 - HOUSING: HIGH TEMP.THERMOPLASTIC, UL 94V-0
 - COLOR: BLACK.
 - CONTACT: COPPER ALLOY, THICKNESS=0.20MM
 - SHELL: SEE PART NO., THICKNESS=0.50MM
- FINISH:
 - CONTACT: GOLD PLATING ON CONTACT AREA SEE NOTE
 - 80u"MIN ,MATTE TIN PLATED ON SOLDER TAILS
 - 50u" MIN. NICKEL UNDER PLATED OVER ALL
 - SHELL: 50u" MIN. NICKEL PLATED OVER ALL
- MECHANICAL CHARACTERISTICS
 - INSERTION FORCE: 44.1N MAX
 - EXTRACTION FORCE: 9.8N MIN, 39.2N MAX
 - MATING CYCLE:10000 CYCLES
- ELECTRICAL CHARACTERISTICS
 - RATING CURRENT: 0.5A
 - RATING VOLTAGE: 40V
 - CONTACT RESISTANCE: 10 MILLOHMS OHMS MAX (EXCLUDING CONDUCTOR RESISTANCE)
 - INSULATION RESISTANCE:
 - a, UNMATED: 100M OHMS MIN AT 500 VDC
 - b, MATED: 10M OHMS MIN AT 150 VDC
 - DIELECTRIC WITHSTANDING VOLTAGE: 300V AC/1MINUTE
 - OPERATING TEMPERATURE: -20°C--+85°C
 - STORAGE TEMPERATURE: -20°C--+65°C


PART NO. INFORMATION:

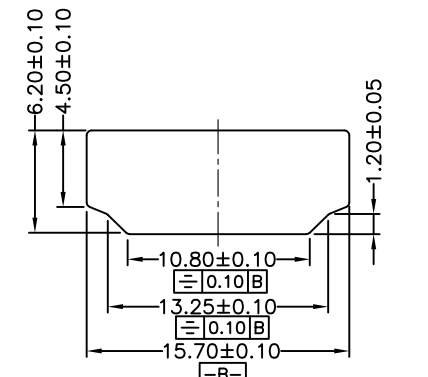
FORM A:ASS'y
 SERIES 11:HDMI-A/F
 NUMBER OF POS. 19
 FOLLOW NO. 92
 DIFFERENCE TYPE. B: SHELL'S SOLDER DIP IS 1.10mm

A111992-B-XX-X

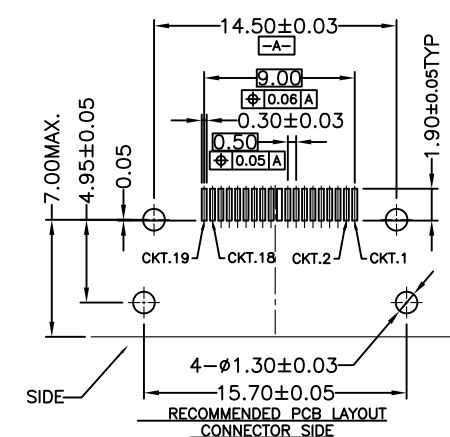
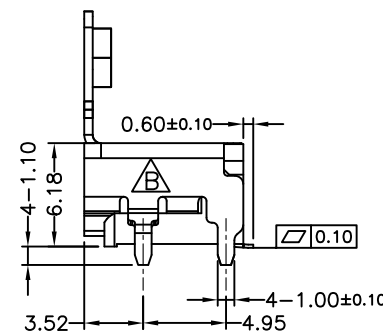
PACKING TYPE
 T: TRAY
 R: TAPE REEL

CONTACT AREA PLATING
 01:Au 1u"
 03:Au 3u"
 05:Au 5u"
 10:Au 10u"
 15:Au 15u"
 30:Au 30u"

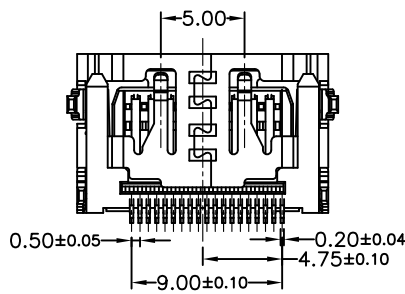
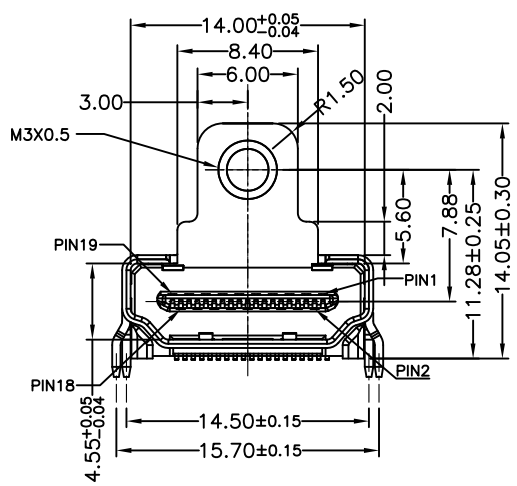
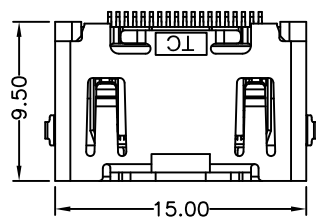
| 03 | CONTACT | T111989-A-XX-A | Brass T=0.20 | GOLD PLATING ON CONTACT AREA SEE PART NO. 80u"MIN MATTE TIN PLATED ON SOLDER TAILS. 100u"-200u" Cu UNDER MIN 50u" Ni PLATING OVER ALL | 1SET | |
|------------|---------|--|-----------------|---|----------------|----------------|
| 02 | SHELL | K111992-B-0N-A | Steel T=0.50 | NICKEL 50u" Min. WITH LOGO | 1 | |
| 01 | MOLDING | B111989-A-XX-A | LCP+30%/F | UL94V-0 BLACK | 1 | |
| NO. | NAME | PART NO. | MATERIAL | FINISH/COLOR | Q' TY | |
| X. ± | APPD: | Knight. Zhang | | TITLE: | | |
| .X ± 0.25 | CHKD: | HDMI-A-19P-F/Short/With Screw Connector Customer | |  泰康电子 TECON 客户图 | | |
| .XX ± 0.20 | DR: | Ba Jin | | | | PART NO: |
| .XXX ± | | | | | | A111992-B-XX-X |
| X* ± 2* | | UNITS: | SCALE: | DWG NO: | 客户图 SHEET:10F1 | |
| .X* ± 1.5* | | mm | 1:1 | C-A111992-B-XX-X | REV: B | |



RECOMMENDED PANEL CUT OUT DIMENSION



RECOMMENDED PCB LAYOUT CONNECTOR SIDE



| B | TE2012-0518 | 取消侧面弹片 | 2012/10/17 |
|-----|-------------|-------------|------------|
| A | TE2012-0418 | 初版发行 | 2012/09/07 |
| REV | ECN NO | DESCRIPTION | DATE |