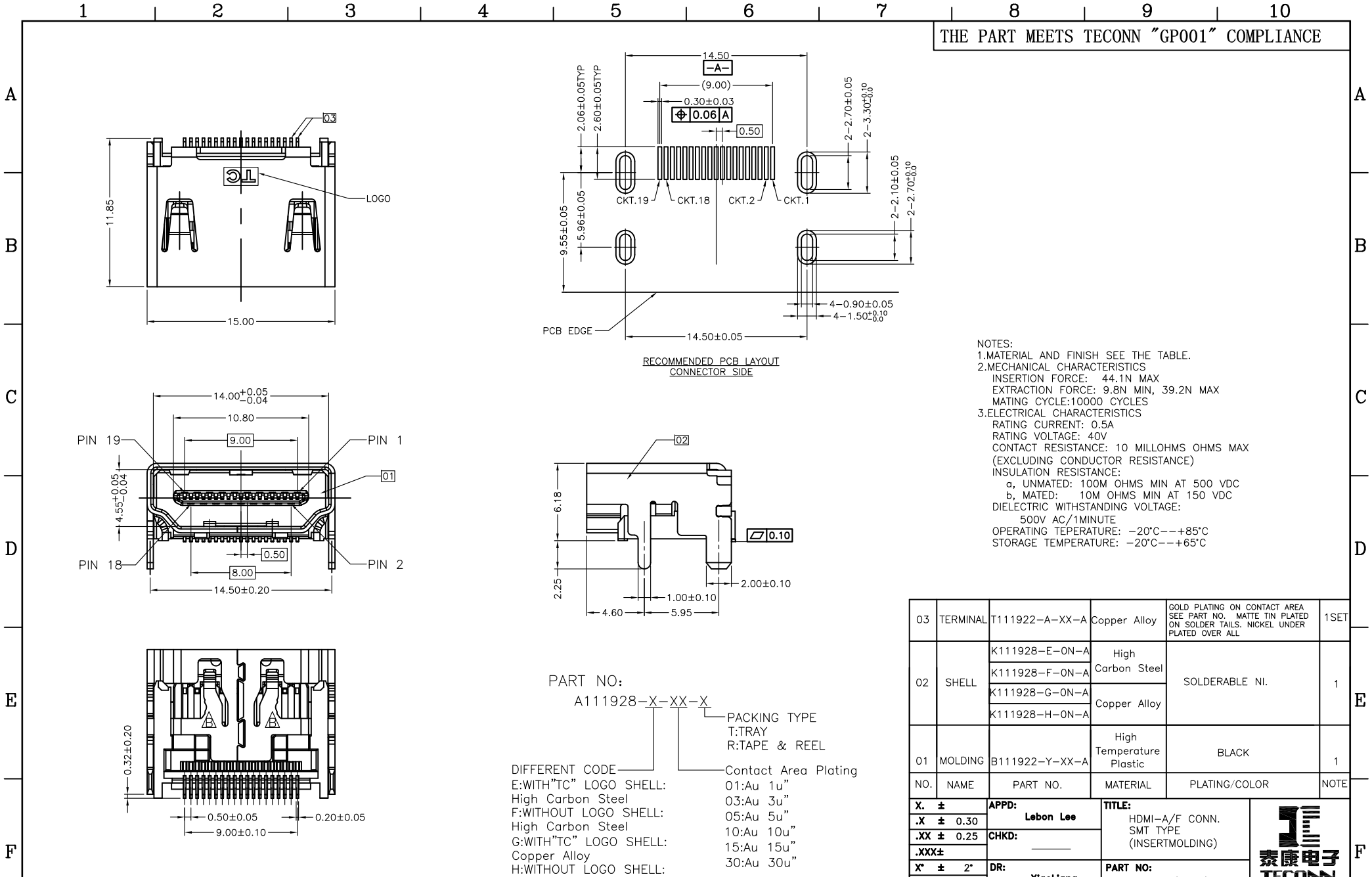


THE PART MEETS TECONN "GP001" COMPLIANCE



RECOMMENDED PCB LAYOUT CONNECTOR SIDE

- NOTES:  
 1.MATERIAL AND FINISH SEE THE TABLE.  
 2.MECHANICAL CHARACTERISTICS  
 INSERTION FORCE: 44.1N MAX  
 EXTRACTION FORCE: 9.8N MIN, 39.2N MAX  
 MATING CYCLE:10000 CYCLES  
 3.ELECTRICAL CHARACTERISTICS  
 RATING CURRENT: 0.5A  
 RATING VOLTAGE: 40V  
 CONTACT RESISTANCE: 10 MILLOHMS OHMS MAX (EXCLUDING CONDUCTOR RESISTANCE)  
 INSULATION RESISTANCE:  
 a. UNMATED: 100M OHMS MIN AT 500 VDC  
 b. MATED: 10M OHMS MIN AT 150 VDC  
 DIELECTRIC WITHSTANDING VOLTAGE:  
 500V AC/1MINUTE  
 OPERATING TEMPERATURE: -20°C--+85°C  
 STORAGE TEMPERATURE: -20°C--+65°C

PART NO:  
 A111928-X-XX-X  
 PACKING TYPE  
 T:TRAY  
 R:TAPE & REEL  
 Contact Area Plating

DIFFERENT CODE  
 E:WITH"TC" LOGO SHELL: High Carbon Steel  
 F:WITHOUT LOGO SHELL: High Carbon Steel  
 G:WITH"TC" LOGO SHELL: Copper Alloy  
 H:WITHOUT LOGO SHELL: Copper Alloy  
 01:Au 1u"  
 03:Au 3u"  
 05:Au 5u"  
 10:Au 10u"  
 15:Au 15u"  
 30:Au 30u"

NO.	NAME	PART NO.	MATERIAL	PLATING/COLOR	NOTE
03	TERMINAL	T111922-A-XX-A	Copper Alloy	GOLD PLATING ON CONTACT AREA SEE PART NO. MATTE TIN PLATED ON SOLDER TAILS. NICKEL UNDER PLATED OVER ALL	1SET
02	SHELL	K111928-E-ON-A	High Carbon Steel	SOLDERABLE NI.	1
		K111928-F-ON-A			
		K111928-G-ON-A	Copper Alloy		
		K111928-H-ON-A			
01	MOLDING	B111922-Y-XX-A	High Temperature Plastic	BLACK	1

X. ±	APPD: Lebon Lee	TITLE: HDMI-A/F CONN. SMT TYPE (INSERT MOLDING)		
.X ± 0.30	CHKD: _____	PART NO: A111928-E(F,G,H)-XX-X DWG NO: C-A111928-E(F,G,H)-XX-X CUSTOMER DRAWING SHEET: 10F 1 REV: B		
.XX ± 0.25	DR: XiaoLiang			
.XXX ±	UNITS: mm			SCALE: NONE
X' ± 2'				
X" ± 1.5'				

REV	ECN NO	DESCRIPTION	DESIGN	DATE
B	TE2019-0218	CHANGE VIEW SHAPE	Bingo	2019.10.14
A	TE2010-908	NEW RELEASE	XiaoLiang	2010.11.16