

## 1. ELECTRICAL SPECIFICATIONS @25°C

1.1 OCL: 350 uH Min @ 100 KHz, 0.1V with 8mA DC Bias

1.2 Leakage Inductance: 0.5uH Max @ 100KHz, 0.2V

1.3 DCR: 1.4Ω Max

1.4 Turns Ratio: 1CT:1CT

1.5 Polarity: 1-20, 4-17, 6-15, 9-12, In-Phase

1.6 Insertion Loss: -1.0 dB Max. @ 0.3-100 MHz

1.7 Return Loss: -18 dB Min. @ 1-30 MHz

-14 dB Min. @ 30-60 MHz

-12 dB Min. @ 60-80 MHz


1.8 Cross Talk: -30 dB Min @ 1-100 MHz

1.9 Common Mode Rejection : -30 dB Min @ 1-100 MHz

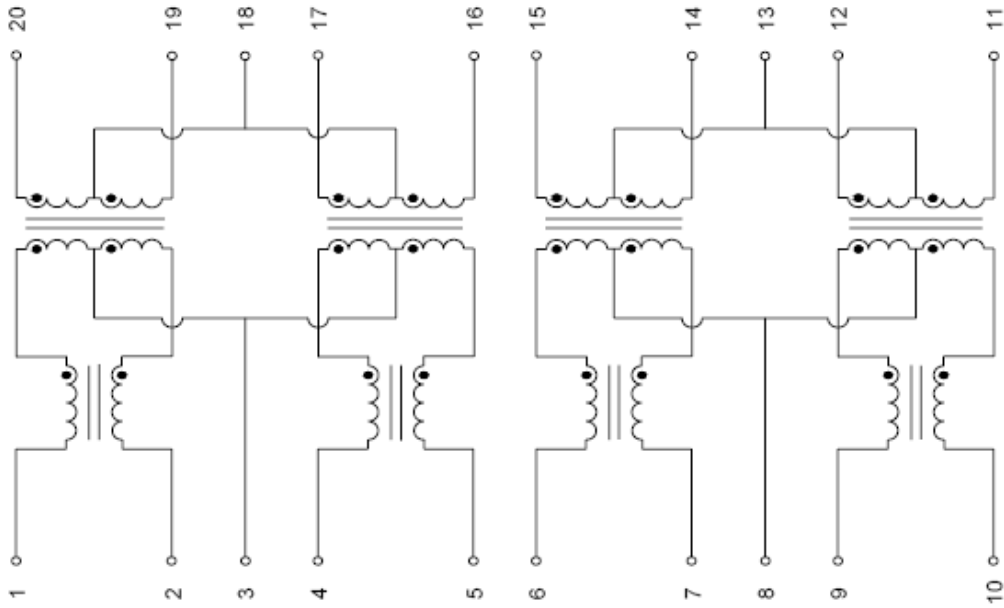
1.10 Isolation HI-POT: 1500Vrms 2mA 60Second

1.11 Operating temperature 0°C to +70°C

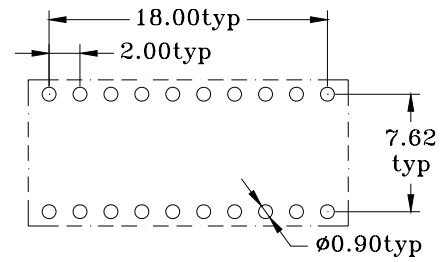
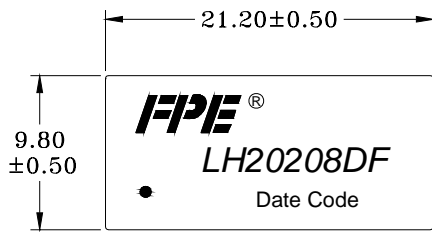
1.12 Storage temperature -40°C to +85°C

Drawn by	Checked by	Approved by	TITLE: 10/100 BASE-T
			PART NO: LH20208DF
	Dongguan Meixin Science and Technology Co., Ltd		REV: C
			PAGE: 1 / 2

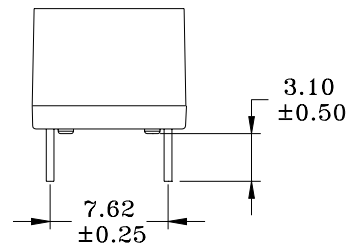
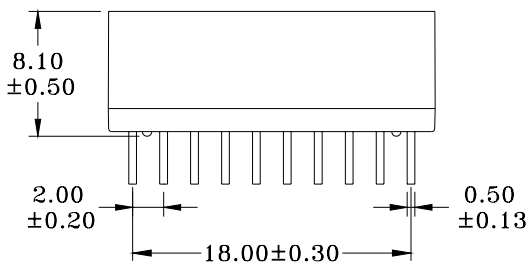
## 2. SCHEMATICS




## 3. DIMENSIONS & MARKING



SUGGESTED PCB LAYOUT



Drawn by	Checked by	Approved by	TITLE: 10/100 BASE-T
			PART NO: LH2028DF
	Dongguan Meixin Science and Technology Co., Ltd	REV: C	
		PAGE: 2 / 2	