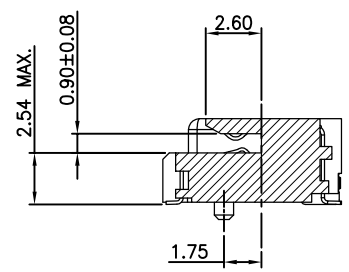
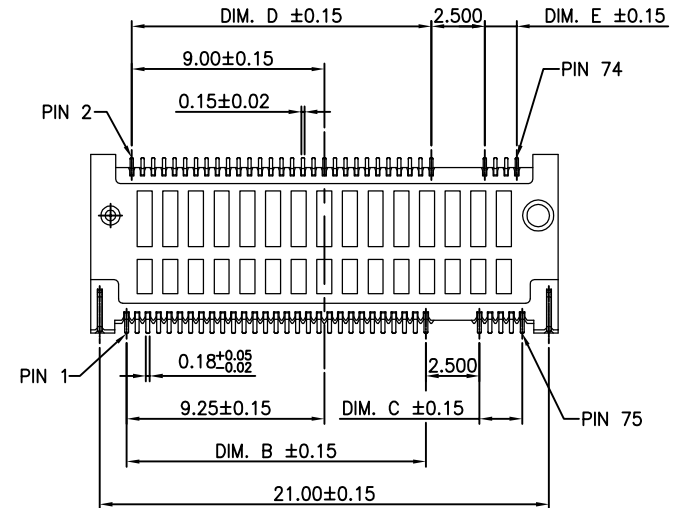
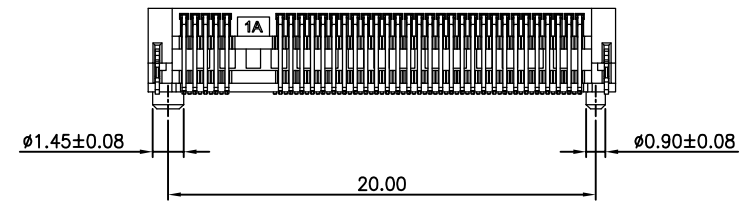
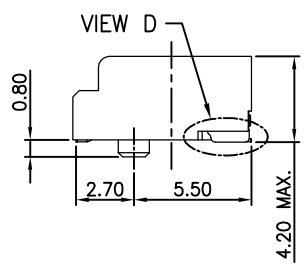
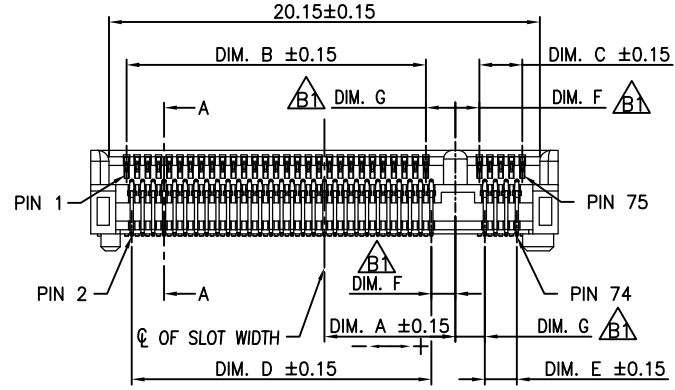
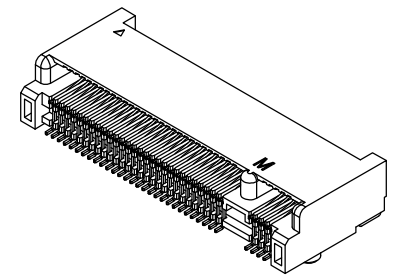
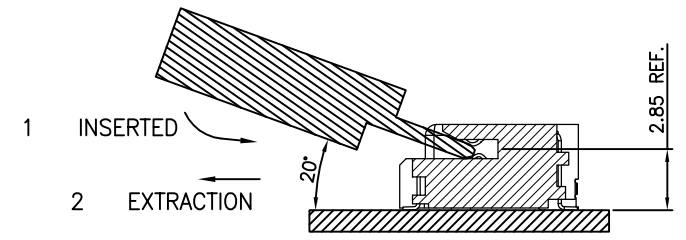


0.10
ALL SOLDERTAIL
& FITTING NAIL

VIEW D
SCALE 4:1



SECTION A-A



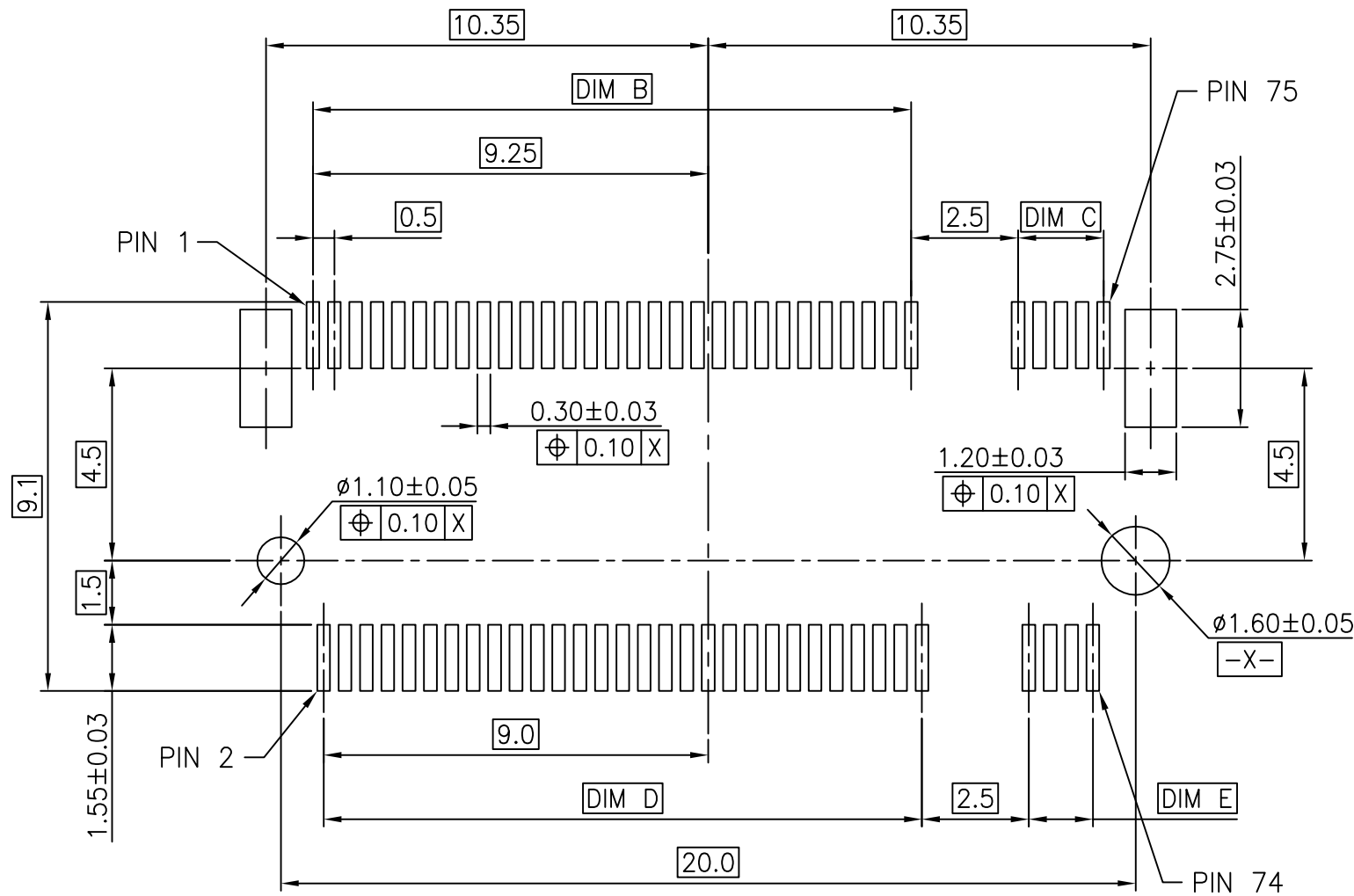
RECOMMENDED OPERATING FLOW:
MATE: 1
UNMATE: 2

B1	-----	Lei Songping	Sep,02,2019
B	17017	Terry	Jul,19,2017
A	17014	Terry	May,15,2017
REV	ECN NO.	NAME	DATE

TOLERANCE	
LINEAR	ANGLES
X.±0.40	X'±
.X±0.30	.X'±
.XX±0.20	.XX'±
.XXX±0.10	.XXX'±

UMax conn 东莞市友贸实业有限公司 DONGGUAN UMAX ENTERPRISE LIMITED	
APPD: Jason	MAT'L:
CHKD: Schumi	FINISH:
DRWN: Terry	Q'TY:

TITLE: M.2 CONN. P=0.5 4.2mm H			
PART NO. 91302-42-067RXX			
DWG NO. C-91302-42			
UNITS	SCALE	SHEET	REV
MM	1 : 1	1 OF 4	B1



TOLERANCE		UMax conn 东莞市友贸实业有限公司 DONGGUAN UMAX ENTERPRISE LIMITED	TITLE:	
LINEAR	ANGLES		M.2 CONN. P=0.5 4.2mm H	
X.±0.40	X'±	APPD: Jason	MAT'L:	PART NO. 91302-42-067RXX
.X±0.30	.X'±			DWG NO. C-91302-42
.XX±0.20	.XX'±	CHKD: Schumi	FINISH:	UNITS MM
.XXX±0.10	.XXX'±	DRWN: Terry	Q'TY:	SCALE 1 : 1

SEE SHEET 1			
REV	ECN NO.	NAME	DATE

	UNITS	SCALE	SHEET	REV
	MM	1 : 1	2 OF 4	B1

NOTES:

1. MATERIAL :
 - 1.1 HOUSING: THERMOPLASTIC, HIGH TEMPERATURE, UL94 V-0, COLOR: BLACK.
 - 1.2 CONTACT: COPPER ALLOY.
 - 1.3 FITTING NAIL: COPPER ALLOY.
2. FINISH :
 - 2.1 CONTACT

[SEE TABLE] GOLD PLATING ON THE CONTACT AREA.
GOLD FLASH PLATING ON THE SOLDERING AREA.

1.27um~2.54um [50u"~100u"] MIN. NICKEL UNDERPLATING OVERALL.
 - 2.2 FITTING NAIL

2.54um~5.08um [100u"~200u"] MIN. MATTE-TIN PLATING ON THE SOLDERING AREA.
1.27um~2.54um [50u"~100u"] MIN. NICKEL UNDERPLATING OVERALL.
3. PACKAGING SPEC.: K-91302-401

PART NO.:

91302 - 42 - 067 R X X

42: 4.2mm HEIGHT

67 CONTACTS

PACKAGING OPTIONS
R: TAPE & REEL

KEY ID OPTIONS
A, B, C, D, E, F
G, H, J, K, L, M

CONTACT AREA PLATING
2: GOLD FLASH
C: 15u" GOLD
D: 30u" GOLD



1.375	1.125	1.5	14.0	2.0	14.0	6.125	M
1.375	1.125	2.5	13.0	3.0	13.0	5.125	L
1.375	1.125	3.5	12.0	4.0	12.0	4.125	K
1.375	1.125	4.5	11.0	5.0	11.0	3.125	J
1.375	1.125	5.5	10.0	6.0	10.0	2.125	H
1.375	1.125	6.5	9.0	7.0	9.0	1.125	G
DIM. G	DIM. F	DIM. E	DIM. D	DIM. C	DIM. B	DIM. A	KEY ID



1.125	1.375	9.5	6.0	9.5	6.5	-1.625	F
1.125	1.375	10.5	5.0	10.5	5.5	-2.625	E
1.125	1.375	11.5	4.0	11.5	4.5	-3.625	D
1.125	1.375	12.5	3.0	12.5	3.5	-4.625	C
1.125	1.375	13.5	2.0	13.5	2.5	-5.625	B
1.125	1.375	14.5	1.0	14.5	1.5	-6.625	A
DIM. G	DIM. F	DIM. E	DIM. D	DIM. C	DIM. B	DIM. A	KEY ID

				TOLERANCE		UMax conn 东莞市友贸实业有限公司 DONGGUAN UMAX ENTERPRISE LIMITED		TITLE: M.2 CONN. P=0.5 4.2mm H				
				LINEAR	ANGLES			PART NO. 91302-42-067RXX				
B1	-----	Lei Songping	Sep,02,2019	X.±0.40	X'±	APPD: Jason	MAT'L:	DWG NO. C-91302-42				
B	17017	Terry	Jul,19,2017	.X±0.30	.X'±	CHKD: Schumi	FINISH:		UNITS	SCALE	SHEET	REV
A	17014	Terry	May,15,2017	.XX±0.20	.XX'±	DRWN: Terry	Q'TY:		MM	1 : 1	4 OF 4	B1
REV	ECN NO.	NAME	DATE	.XXX±0.10	.XXX'±							