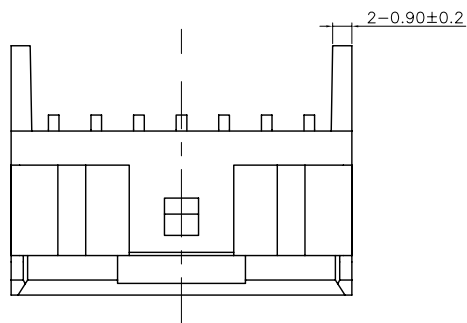
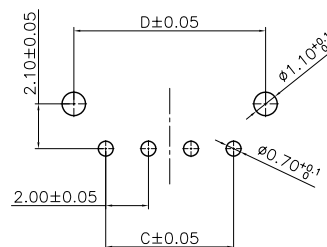
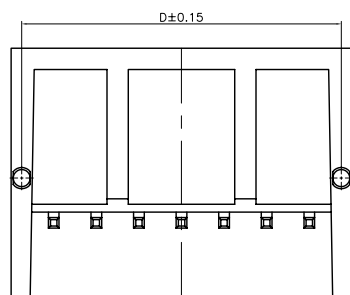
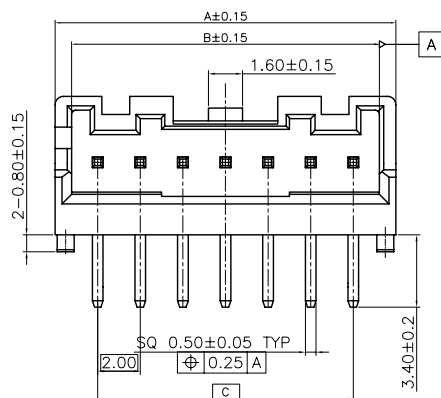
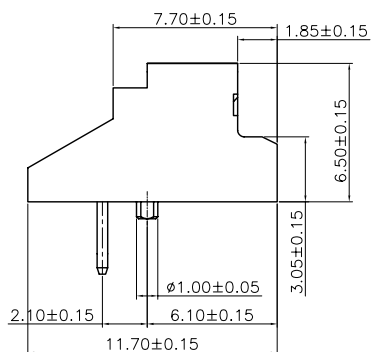


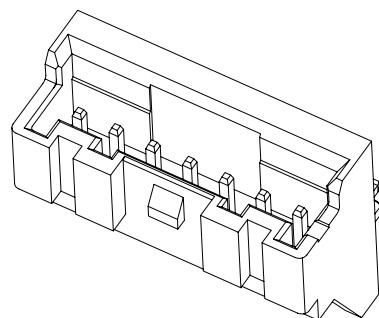
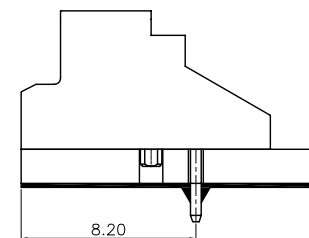
REV.	DATE	ECN NO.	MODIFICATION	APPROVER
A	2017.04.15	/	初版发行	JASON
		/		



- 规格:  
Specifications:
- 1, 额定电流: 3A AC/DC (使用AWG#22时)  
Current rating: 3A AC/DC (AWG#22)
  - 2, 额定电压: 250V AC/DC  
Voltage rating: 250V AC/DC
  - 3, 使用温度范围: -25℃~+85℃ (含通电时温度上升)  
Temperature range: -25℃~+85℃ (including temperature rise in applying electrical current)
  - 4, 接触电阻: 初期 / 10 mΩ 以下  
环境试验后/ 20 mΩ 以下  
Contact resistance: Initial value/10mΩ max  
After environmental tests/20 mΩ max
  - 5, 绝缘电阻: 初期/1000MΩ 以上  
Insulation resistance: 1000 MΩ min
  - 6, 耐电压: AC 800V/1分钟  
Withstanding voltage: 800VAC/minute
  - 7, 适用电线范围: AWG#28~#22  
Applicable wire: AWG#28 to #22
  - 8, 适合的印刷电路板厚度: 1.6mm  
Applicable PC board thickness: 1.6mm
  - 9, 主体材料: Thermoplastic, UL94-V0, 天然色 (白色)  
Housing material: Thermoplastic, UL94-V0, natural (White)
  - 10, 端子材料: 黄铜, 镀锡  
Terminal material: brass, plating Tin

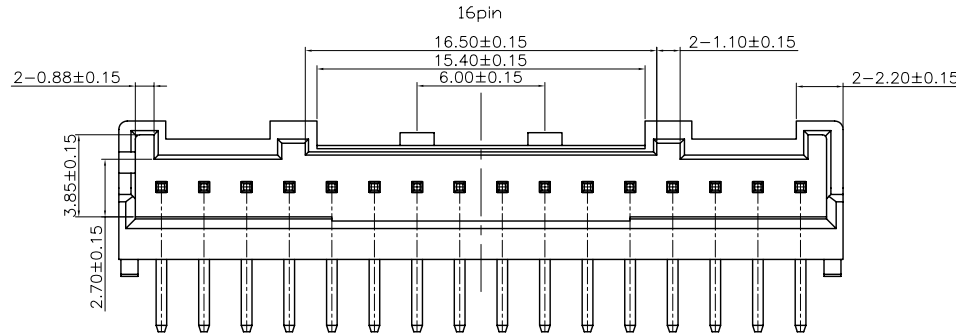
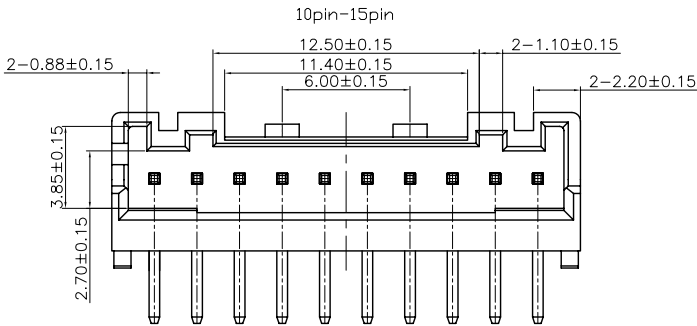
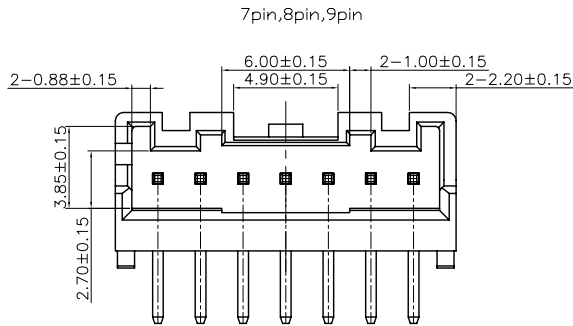
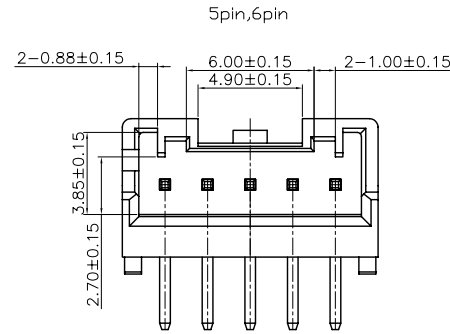
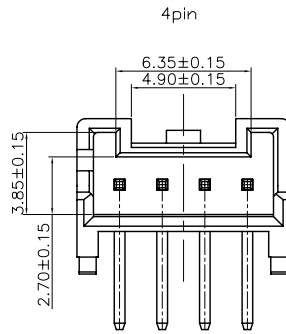
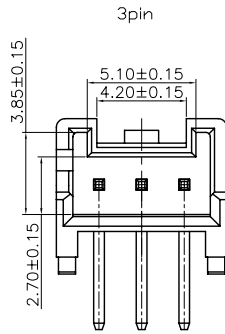
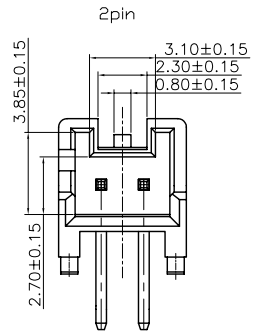


PCB LAYOUT



GENERAL TOLERANCE				UNITS	NAME (INTENDED USE)	ATOM 深圳市爱特姆科技有限公司 SHENZHEN ATOM TECHNOLOGY CO., LTD.			
SELECT	✓			mm	WAFER 2.0 DIP 90° H6.5	TITLE: Wafer2.0mm XP DIP 90° 带定位柱 无K脚			
ON.	1	2	3	MAT'L	PART NO. (INTENDED USE)				DWG NO.:
X.XXX	±0.15	±0.05	±0.15	FINISH	WF200**-06***	ATOM-A03491			
X.XX	±0.25	±0.13	±0.25		APPD:	SCALE SHEET REV.			
X.X	±0.30	±0.25	±0.50		Q'TY	CHKD:	1:1 1/2 A0		
X.	±0.38	±0.38	±1.00		DR:	DAVID			
ANGLE	±5°								

REV.	DATE	ECN NO.	MODIFICATION	APPROVER
A	2017.04.15	/	初版发行	JASON



极数	尺寸				ATOM料号
	A	B	C	D	
2	6.00	4.45	2.00	5.00	WF20002-06401
3	8.00	6.45	4.00	7.00	WF20003-*****
4	10.00	8.45	6.00	9.00	WF20004-10402
5	12.00	10.45	8.00	11.00	WF20005-*****
6	14.00	12.45	10.00	13.00	WF20006-06402
7	16.00	14.45	12.00	15.00	WF20007-06402
8	18.00	16.45	14.00	17.00	WF20008-06402
9	20.00	18.45	16.00	19.00	WF20009-*****
10	22.00	20.45	18.00	21.00	WF20010-*****
11	24.00	22.45	20.00	23.00	WF20011-*****
12	26.00	24.45	22.00	25.00	WF20012-*****
13	28.00	26.45	24.00	27.00	WF20013-*****
14	30.00	28.45	26.00	29.00	WF20014-*****
15	32.00	30.45	28.00	31.00	WF20015-*****
16	34.00	32.45	30.00	33.00	WF20016-*****

GENERAL TOLERANCE	UNITS	mm	NAME (INTENDED USE)	深圳市爱特姆科技有限公司 SHENZHEN ATOM TECHNOLOGY CO., LTD.		
SELECT ✓	MAT'L		WAFER 2.0 DIP 90° H6.5	PART NO. (INTENDED USE)	TITLE:	
ON. TOL.				WF200**-06***	Wafer 2.0mm XP DIP 90° 带定位柱 无K脚	
X.XXX	±0.15	±0.05	±0.15	APPD:	DWG NO.:	
X.XX	±0.25	±0.13	±0.25	CHKD:	ATOM-A03491	
X.X	±0.30	±0.25	±0.50	DR:	DAVID	SCALE
X.	±0.38	±0.38	±1.00			SHEET
ANGLE	±5°					REV.
						A0