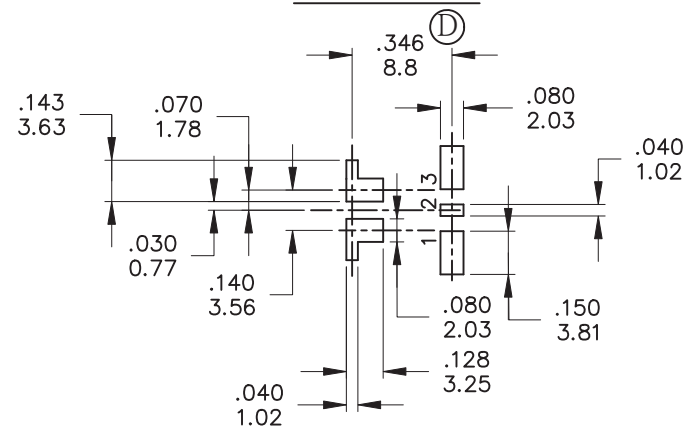


Model No.	POS.1	POS.2	POS.3
2BS1	ON	NONE	ON
Term. Comm.	2-3	N/A	2-1
SCHEMATIC			

SWITCH FUNCTION



P.C. MOUNTING



**SPECIFICATIONS**

- (A) **MECHANICAL LIFE:** 30,000 make-and-break cycles.
- CONTACT RESISTANCE:** 20 mΩ max. initial @ 2-4VDC  
100mA for both silver and gold plated contacts.
- INSULATION RESISTANCE:** 1,000 MΩ min.
- DIELECTRIC STRENGTH:** 1,000 Vrms min. @sea level.
- OPERATING TEMPERATURE:** -30°C to 85°C.

**MATERIALS**

- CASE & BUSHING** - Glass filled nylon 6/6 ,flame retardant , heat stadiilized( UL94V-0 )
- ACTUATOR** - Brass, chrome plated.Internal O-ring seal. standard for all actuators.
- SWITCH SUPPORT** - Brass , tin plated.
- TERMINALS/CONTACT** - Copper alloy.
- RoHS & Lead Free**

	CONTACT PLATING	TERMINAL PLATING	RATINGS
Q	Silver	Q = Gold flash over silver	3 Amps @120 VAC or 28VDC
C	Gold over Silver	C = Gold over silver	1 Amps @250 VAC
R	Gold	R = Gold	0.4 Volt-Amps(VA) max. @20V max. (AC or DC)

德利威電子股份有限公司  
DAILYWELL ELECTRONICS CO.,LTD.

符號	原尺寸	修改後尺寸	變更日期	SCALE (比例) : 3 : 2	TITLE 圖名	SIZE 圖紙	
1 (A)		規格內容修改	MAR-22-2007	TOLERANCE (公差) : 0.00 mm ± 0.25mm 0.0 mm ± 0.40mm ANGULAR : ± 5° FILE NAME : 2BSP0029	Sealed Sub - Miniature Toggle Switches(SMT)	A4	
2 (B)		增加4.80尺寸標示	FEB-24-2011		DWG NO. 圖號	2BS1T2A1MTRES	UNIT 單位
3 (C)		取消端子沾錫規範	MAY-23-2013		REV. 版本	E	DATE 日期
4 (D)	依據ECN GC13081301,修訂8.8尺寸		OCT-27-2014		CHECKED BY 審核	RICHARD	DRAWN BY 製圖
5 (E)							ODA