

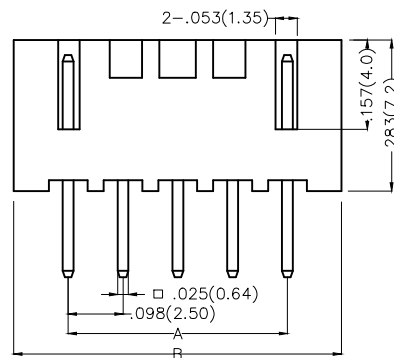
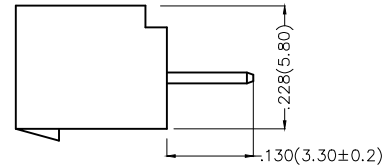
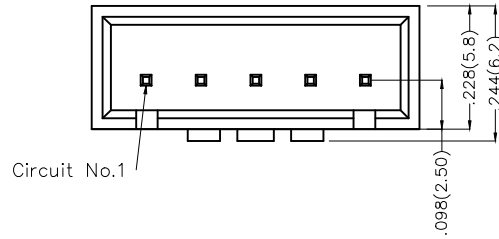
REV	LOCATIONS	DESCRIPTION	DATE	REVISER	APPD

Electrical

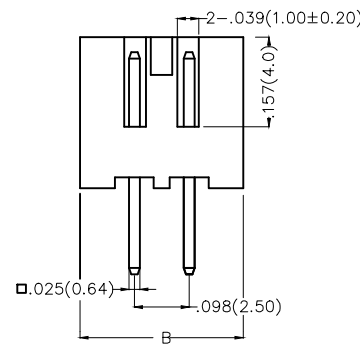
Current Rating: 3.0A AC(rms)/DC
Voltage Rating: 250V AC(rms)/DC
Contact Resistance: 20 mΩ Max
Insulation Resistance: 1000 MΩ MIN
Withstanding Voltage: 1000V AC r.m.s
Temperature Range—Operating: -25°C~+85°C

Material and Plating

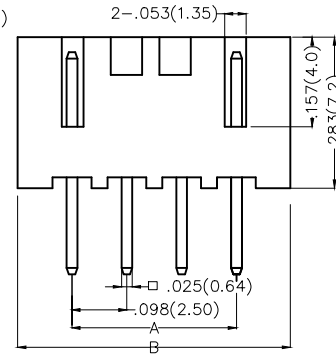
Housing: PA66(UL 94V-2)
Contact Pin: Brass
Plating: Tin Plated



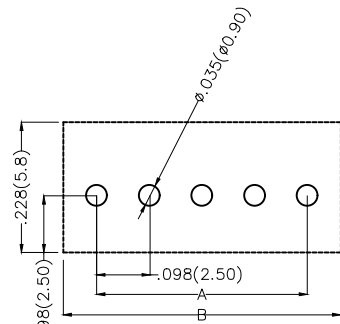
5-12Circuits



2-3Circuits



4Circuits




Recommended P.C.Board Layout

Ordering Information



FWF 250 12 — S XX S 2 2 XX B
1 2 3 4 5 6 7 8 9 10

1 Category FWF—Wafer	2 Series Number 250—Pitch 2.5mm	3 Distinction No. 12	4 Row Option S—Single Row	5 Circuits XX	6 Entry Angle S—180° Vertical	
7 Plating 2—Tin Plated	8 Material—Resin 2—PA66	9 Color—Resin W1—White R1—Red K6—Black N1—Green U1—Blue ...	10 Packaging B—PE Bag			

THIRD ANGLE PROJECTION	GENERAL TOLERANCES (UNLESS SPECIFIED)		APPROVE BY FRANK	DATE 01/MAY/14	PART NO. FWF25012—SXXS22XXB	ITEM NO. FWF25012	 Leader Of Industry
	DESIGN UNITS Inch (metric)	X.±.012(0.30) X.±5'	CHECKED BY CHERRY	DATE 01/MAY/14	TITLE Wire to Board (Wafer) Pitch 2.5mm 180° Vertical (DIP)		
SCALE 5:1	SIZE A4	X.XX±.006(0.15) .XX'±1"	DRAWN BY JACOB	DATE 01/MAY/14	THIS DRAWING CONTAINS INFORMATION THAT IS PROPRIETARY TO TXGA INDUSTRIAL ELECTRONICS(S.Z)CO.,LTD AND SHOULD NOT BE USED WITHOUT WRITTEN PERMISSION		
		X.XXX±.004(0.10) .XXX'±0.5'					

REV	LOCATIONS	DESCRIPTION	DATE	REVISER	APPD

Circuits (n)	Part No.	Dimensions(in/mm)	
		A	B
2	FWF25012-S02S22XXB	.098(2.50)	.295(7.50)
3	FWF25012-S03S22XXB	.197(5.00)	.394(10.00)
4	FWF25012-S04S22XXB	.295(7.50)	.492(12.50)
5	FWF25012-S05S22XXB	.394(10.00)	.591(15.00)
6	FWF25012-S06S22XXB	.492(12.50)	.689(17.50)
7	FWF25012-S07S22XXB	.591(15.00)	.787(20.00)
8	FWF25012-S08S22XXB	.689(17.50)	.886(22.50)
9	FWF25012-S09S22XXB	.787(20.00)	.984(25.00)
10	FWF25012-S10S22XXB	.886(22.50)	1.083(27.50)
11	FWF25012-S11S22XXB	.984(25.00)	1.181(30.00)
12	FWF25012-S12S22XXB	1.083(27.50)	1.024(32.50)

 THIRD ANGLE PROJECTION	GENERAL TOLERANCES (UNLESS SPECIFIED)		APPROVE BY FRANK	DATE 01/MAY/14	PART NO. FWF25012-SXXS22XXB	ITEM NO. FWF25012	 Leader Of Industry	
	DESIGN UNITS Inch (metric)	X.±.012(0.30)	X.±5°	CHECKED BY CHERRY	DATE 01/MAY/14	TITLE Wire to Board (Wafer) Pitch 2.5mm 180° Vertical (DIP)		REV 0
SCALE 5:1	SIZE A4	X.XX±.006(0.15)	X.XX±1°	DRAWN BY JACOB	DATE 01/MAY/14	THIS DRAWING CONTAINS INFORMATION THAT IS PROPRIETARY TO TXGA INDUSTRIAL ELECTRONICS(S.Z)CO.,LTD AND SHOULD NOT BE USED WITHOUT WRITTEN PERMISSION		