

**SPECIFICATIONS**

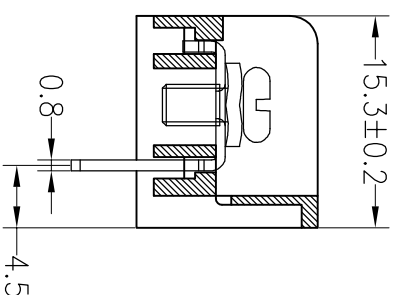
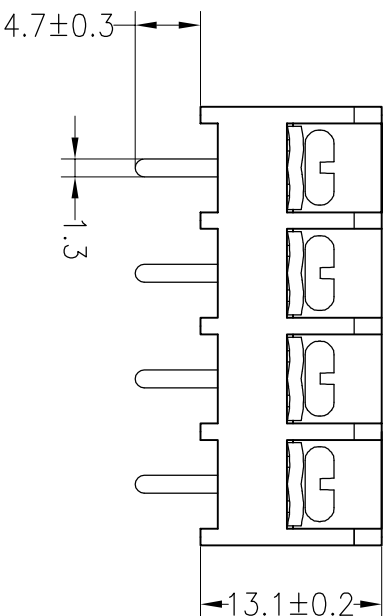
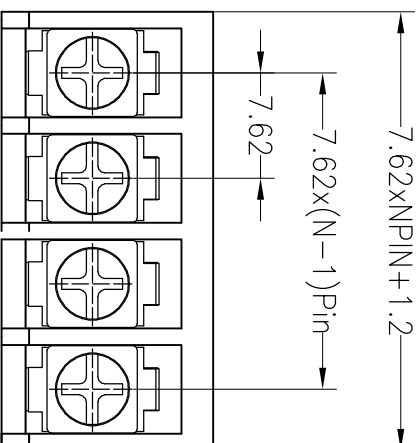
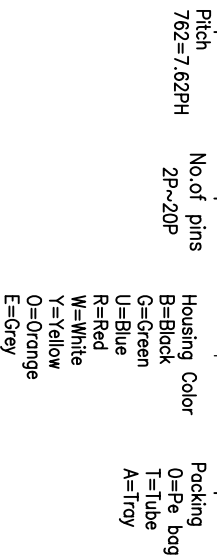
Rated(额定参数): 300V,20A  
 Dielectric strength(抗电强度): AC2000V/1 Minute  
 Insulation Resistance(绝缘电阻):1000MΩ Min  
 Contact Resistance(接触电阻):20mΩ Max  
 Screw Torque(扭矩): 0.8Nm (7.02Lb.in)  
 Wire Range(线径):14~22AWG  
 Temp. range(操作温度): -40℃~+105℃  
 MAX Soldering(瞬时温度):+250℃,5s

Housing Material(塑件): PA66 (UL94 V-0)  
 Contact(端子): Brass, Tin plating(黄铜镀锡)  
 Screw (螺丝): M3.5, Steel, Ni plating(钢,镀锌)

PITCH RANGE IN MM	NOMINAL DIMENSION RANGE IN MM					
	OVER 6	OVER 10	TO 10	OVER 30	OVER 60	OVER 100
TO 6	TO 10	TO 24	TO 30	TO 60	TO 100	OVER 150
±0.10	±0.15	±0.25	±0.30	±0.30	±0.50	±0.70

**Ordering Information**

**JL762 - 762 XX X X 1**



REV	DATE	MODIFICATION DESCRIPTION	CHANGE	DIM	TOL	APPROVE	SCALE	FIT	PROJ.	TITLE:
A0	2019.01.03	NEW DRAWING		Angle	±3'	APPROVE	UNIT	mm		PART NO. JL762-762XXXX1
1				OPERATION	±0.30	DRAW	SIZE	A4		7.62mm Terminal Blocks Female
					±0.20	CHECK	SHEET	1/1		
					±0.10		PROJ.			

**JILIN** 深圳市锦凌电子有限公司  
 SHENZHEN JINLING ELECTRONIC CO.,LTD  
 Tel: 86-755-2997-5806/5802 Fax: 86-755-2997-5992