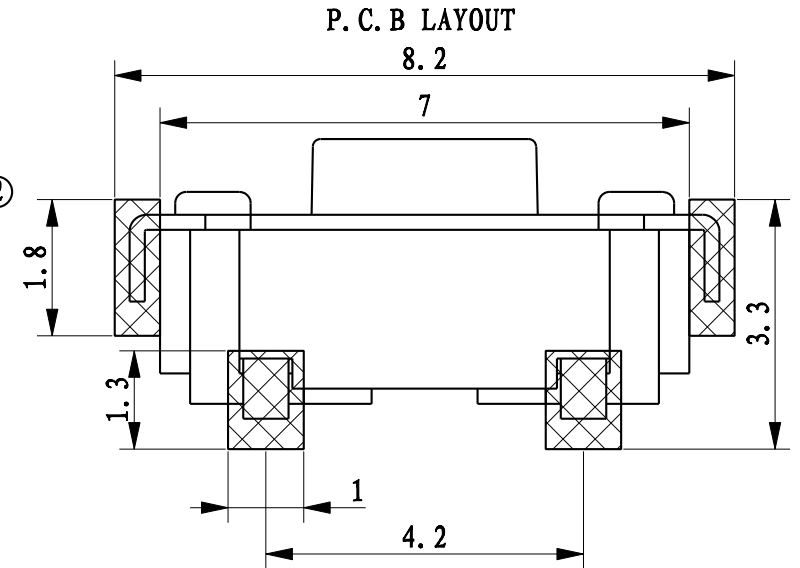
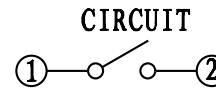
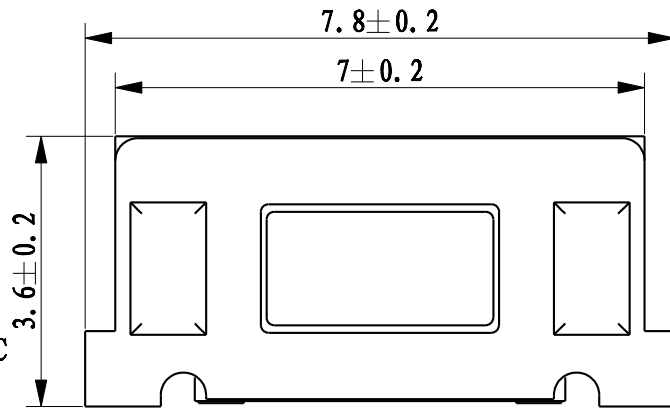
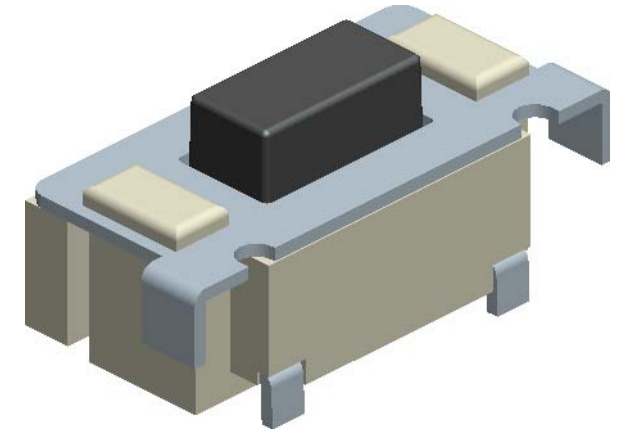
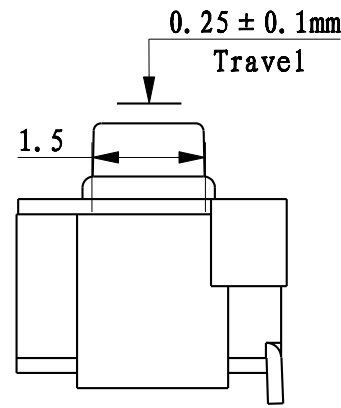
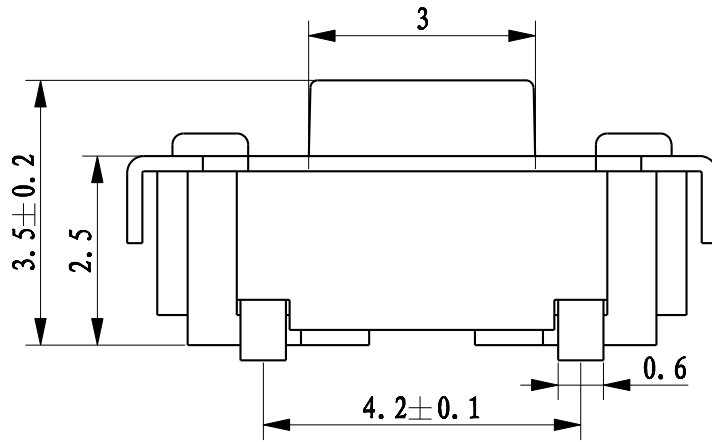

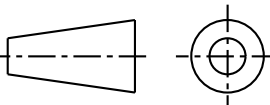


REVISION A



技术参数

1. 额定电流: 50mA 12VDC
2. 接触电阻: 100mΩ
3. 按 力: 160 ± 30gf
4. 行 程: 0.25 ± 0.1mm
5. 绝缘电阻: 100MΩ
6. 抗电强度: 100v 50Hz 1Min
7. 寿 命: 50,000 次

|  |  |             |      |          |      |     |  |  |  |       |       |          |     |
|--|--|-------------|------|----------|------|-----|--|--|--|-------|-------|----------|-----|
| TITLE  |  | TACT SWITCH |      | DRAWN    |      | 许金龙 |  | TOLERANCE OTHERWISE UNLESS SPECIFIED   |  |       |       |          |     |
| PRODUCT NO.  |  | TS-KG012E   |      | CHECKED  |      | 孙庆有 |  | TOLERANCE  |  | ± 0.2 |       |          |     |
| DRAWING NO.  |  | GEFU-KG012E |      | APPROVED |      | 赵崇生 |  | ANGLE TOL  |  | ± 1°  |       |          |     |
| SCALE  |  | 10:1        | UNIT | mm       | DATE |     |  |  |  |       |       |          |     |
| <br>Dongguan Hanbo Electronic Technology Co., Ltd |  |             |      |          |      |     |  |  |  |       |       |          |     |
|  |  |             |      |          |      |     |  |  |  | NO.   | PARTS | MATERIAL | QTY |