

SPECIFICATIONS

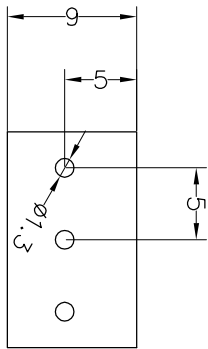
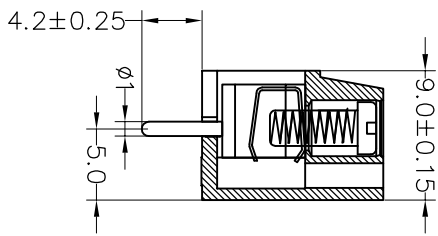
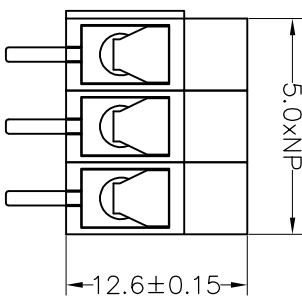
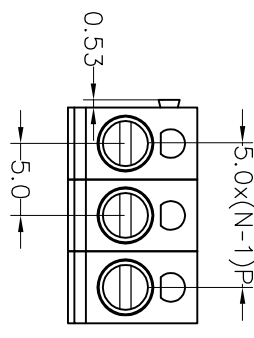
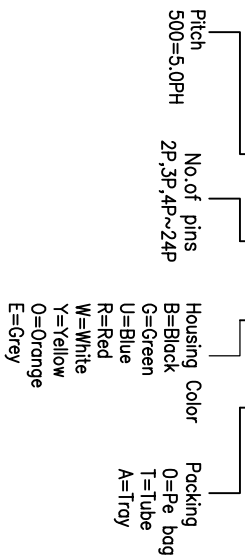
Rated (额定参数): 300V, 12A
 Dielectric strength (抗电强度): AC2000V/1 Minute
 Insulation Resistance (绝缘电阻): 1000MΩ Min
 Contact Resistance (接触电阻): 20mΩ Max
 Screw Torque (扭矩): 0.5Nm (4.4lb.in)
 Wire Range (线径): 14~22AWG
 Strip length (剥线长度): 4.5~5mm
 Temp. range (操作温度): -40°C~+105°C
 MAX Soldering (瞬时温度): +250°C, 5s

Housing Material (塑件): PA66 (UL94 V-0)
 Contact (端子): Brass, Tin plating (黄铜镀锡)
 Wire protector (弹片): Bronze (磷铜), Ni plating (镀镍)
 Screw (螺丝): M3.0, Steel, Zinc plating (钢, 镀锌)

PITCH RANGE IN MM		NOMINAL DIMENSION RANGE IN MM					
OVER	TO	OVER	TO	OVER	TO	OVER	TO
6	10	10	30	60	100	100	150
10	24	30	60	100	150	150	150
±0.10	±0.15	±0.25	±0.30	±0.30	±0.50	±0.70	±1.00

Ordering Information

JL 300-500 XX U X 1



Recommended P.C.B Layout (Top Side)

OPERATION		DRAW		SCALE		FIT		TITLE:	
DIM	TOL	DRAW	BEN	UNIT	mm	PROL.	1/1	PART NO.	5.00mm Terminal Blocks Female 180°
X.X	±0.30	CHECK	17.01.04	A4	1/1	JL300-500XXUX1			
X.XX	±0.20	CHECK							
X:XXX	±0.10	CHECK							
Angle	±3°	APPROVE							
DATE	MODIFICATION DESCRIPTION	CHANGE							
2017.01.04	NEW DRAWING								
REV									
1									

JIN 深圳市锦凌电子有限公司
 SHENZHEN JINLING ELECTRONIC CO.,LTD
 Tel: 86-755-2997-5806/5802 Fax: 86-755-2997-5992