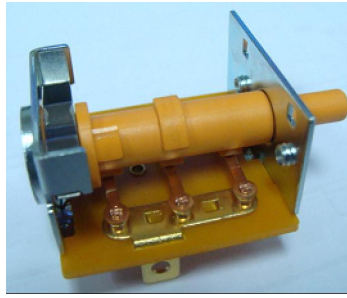




ROTARY SWITCH

HR31 SERIES



SPECIFICATION

Rating:16A 125VAC (CQC)

16A 250VAC (CQC)

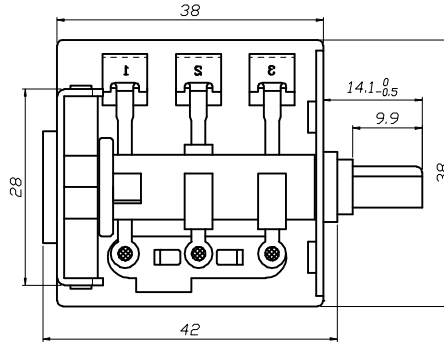
INITIAL CONTACT RESISTANCE:20mΩ Max

OPERATION FORCE:750~1000gf-cm

INSULATION RESISTANCE:100mΩ MIN 500VDC

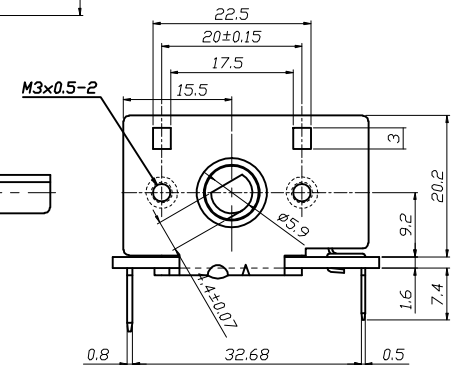
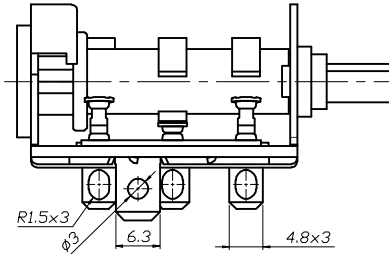
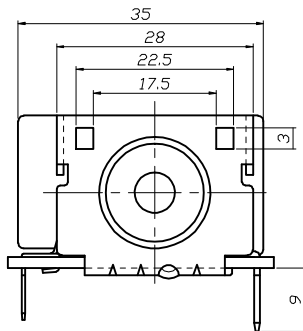
WITHSTAND VOLTAGE:1000VAC FOR 1MINUTE

ENDURANCE:10,000 CYCLES



**1POLE 6 POSITIONS
FUNCTION 1**

	X	X	X		1
X	X		X	X	2
X	X				3
⊕	⊕	⊕	⊕	⊕	

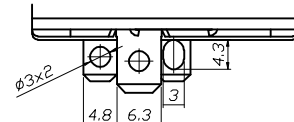
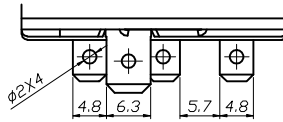
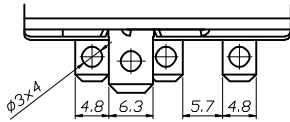


TYPE A

TYPE B

TYPE C

Terminal list



HR31 SERIES ORDERING SYSTEM



MODEL NO.

MOUNTING TYPE

M	SCREW TYPE M3x0.5
H	HOLE TYPE Ø3.2
S	HOLE TYPE Ø2.7

POSITION TYPE

4	4 POSITION
5	5 POSITION
6	6 POSITION
8	8 POSITION

CONTACTS ARRANGEMENT

1	T1/T2 SILVER T3 FORMING SHAPE
2	T1/T2 SILVER T3 BLANK
3	T1/T2/T3 SILVER
4	T1 BLANK T2/T3 SILVER
5	T1 FORMING SHAPE T2/T3 SILVER
6	T1 SILVER T2/T3 BLANK

T. HOLE TYPE

A	SEE ATTACHED ILLUSTRATION APPENDIX A
B	
C	

FUNCTIONAL

F1	SEE ATTACHED APPENDIX B
F2	

POLE TYPE

1P	SINGLE POLE
2P	DOUBLE POLE

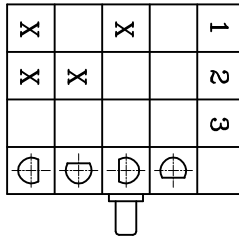
RoHS DIRECTIVE

R	MEET RoHS DIRECTIVE
	NONE

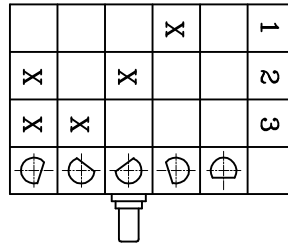
COVER

C	COVER
	NONE

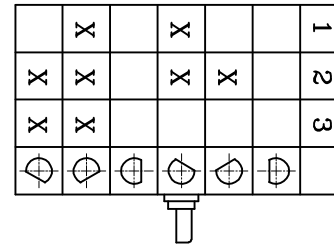
**1 POLE/4 POSITIONS
FUNCTION 1**



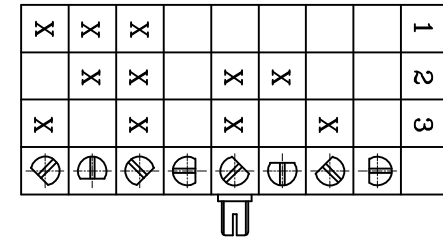
**1POLE /5 POSITIONS
FUNCTION 1**



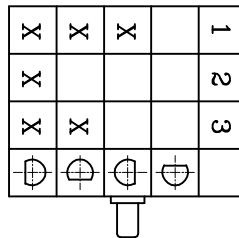
**1 POLE/6 POSITIONS
FUNCTION 1**



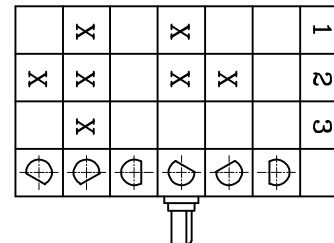
**1 POLE/8 POSITIONS
FUNCTION 1**



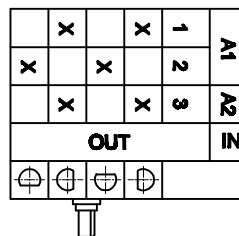
**1 POLE/4 POSITIONS
FUNCTION 2**



**1POLE /6 POSITIONS
FUNCTION 2**



**2 POLE/4 POSITIONS
FUNCTION 1**



註七:A67P1L-5段1POLE
 註六:A66P1O-4段2POLE /FUNCTION 1
 註五:A41P1E-6段/FUNCTION 2
 註四:A22P1E-4段/FUNCTION 2
 註三:A10P1R-4段/FUNCTION 1
 註二:A09P1L-6段/FUNCTION 1
 註一:A06P1O-6段FUNCTION 1